

50-025-30271

Form C-101
Revised 10-1-78

| | |
|------------------------|--|
| NO. OF COPIES RECEIVED | |
| DISTRIBUTION | |
| SANTA FE | |
| FILE | |
| U.S.G.S. | |
| LAND OFFICE | |
| OPERATOR | |

P. O. BOX 2088

SANTA FE, NEW MEXICO 87501

5A. Indicate Type of Lease

| STATE | FEE |
|-------------------------------------|--------------------------|
| <input checked="" type="checkbox"/> | <input type="checkbox"/> |

5. State Oil & Gas Lease No.

B-9312

APPLICATION FOR PERMIT TO DRILL, DEEPEN, OR PLUG BACK

| | | | |
|--|--|----------------------------------|--|
| 1a. Type of Work | | 7. Unit Agreement Name | |
| b. Type of Well OIL WELL <input checked="" type="checkbox"/> GAS WELL <input type="checkbox"/> OTHER <input type="checkbox"/> | | 8. Farm or Lease Name | |
| 2. Name of Operator | | 9. Well No. | |
| 3. Address of Operator | | 10. Field and Pool, or Wildcat | |
| 4. Location of Well | | 11. County | |
| 5. Proposed Depth | | 12. State or C.T. | |
| 6. Elevation (Show whether D.F., R.T., etc.) | | 13. Drilling Contractor | |
| 14. King & Status Plug Bond | | 15. Approx. Date Work will start | |

PROPOSED CASING AND CEMENT PROGRAM

| SIZE OF HOLE | SIZE OF CASING | WEIGHT PER FOOT | SETTING DEPTH | SACKS OF CEMENT | EST. TOP |
|--------------|----------------|-----------------|---------------|-----------------|----------|
| 12-1/4" | 8-5/8" | 24# | 420' | 250 | Surface |
| 7-7/8" | 5-1/2" | 15.5 & 17# | 4000' | 1000 | Surface |
| | | | | | |

The Queen zone will be selectively perforated and stimulated as needed for optimum production.

Texaco Producing, Inc. operates the West Dollarhide Drinkard Unit #82, also located in this quarter quarter section.

IN ABOVE SPACE DESCRIBE PROPOSED PROGRAM; IF PROPOSAL IS TO DEEPEN OR PLUG BACK, GIVE DATA ON PRESENT PRODUCTIVE ZONE AND PROPOSED NEW PRODUCTIVE ZONE. GIVE BLOWOUT PREVENTER PROGRAM, IF ANY.

I hereby certify that the information above is true and complete to the best of my knowledge and belief.

Signed Amy L Whitley Title _____ Agent _____ Date March 1, 1988

(This space for State Use)

ORIGINAL SIGNED BY JERRY SEXTON

APPROVED BY: DISTRICT 1 SUPERVISOR TITLE: _____ DATE: _____

CONDITIONS OF APPROVAL, IF ANY:

Permit Expires 6 Months From Approval Date Unless Drilling Underway.

MAR 4 - 1988

MSL-2469

N. MEXICO OIL CONSERVATION COMMISS
WELL LOCATION AND ACREAGE DEDICATION PLAT

Form C-102
 Supersedes C-128
 Effective 1-1-65

All distances must be from the outer boundaries of the Section.

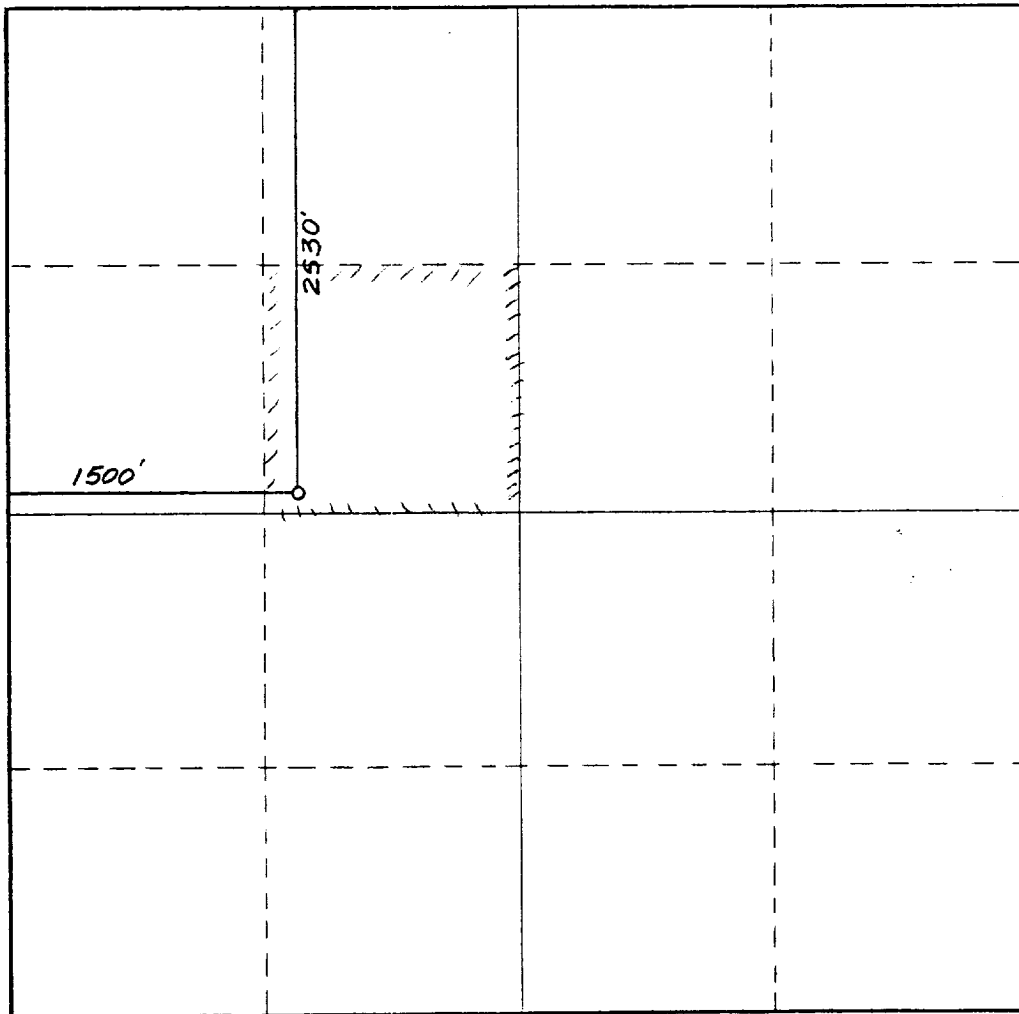
| | | | | | |
|--|-------------------------------------|-----------------------------|---------------------------------|-----------------------------------|---------------------------------------|
| Operator SIRGO-COLLIER, INC. | | | Lease WDQSU | | Well No. 123 |
| Unit Letter F | Section 5 | Township 25 South | Range 38 East | County Lea County, N.M. | |
| Actual Footage Location of Well: 1500 feet from the West line and 2530 feet from the North line | | | | | |
| Ground Level Elev. 3119. | Producing Formation Queen | | Pool Dollarhide Queen | | Dedicated Acreage: 40 Acres |

1. Outline the acreage dedicated to the subject well by colored pencil or hachure marks on the plat below.
2. If more than one lease is dedicated to the well, outline each and identify the ownership thereof (both as to working interest and royalty).
3. If more than one lease of different ownership is dedicated to the well, have the interests of all owners been consolidated by communitization, unitization, force-pooling, etc?

☒ Yes ☐ No If answer is "yes," type of consolidation Unitization, R-2356

If answer is "no," list the owners and tract descriptions which have actually been consolidated. (Use reverse side of this form if necessary.) _____

No allowable will be assigned to the well until all interests have been consolidated (by communitization, unitization, forced-pooling, or otherwise) or until a non-standard unit, eliminating such interests, has been approved by the Commission.



CERTIFICATION

I hereby certify that the information contained herein is true and complete to the best of my knowledge and belief.

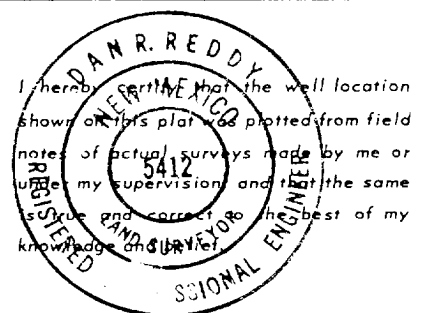
Amy L. Whitley

Name
Amy L. Whitley

Position
Agent

Company
Sirgo-Collier, Inc.

Date
March 1, 1988

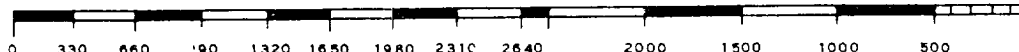


Date Surveyed
February 12, 1988

Registered Professional Engineer and/or Land Surveyor

Dan R. Reddy

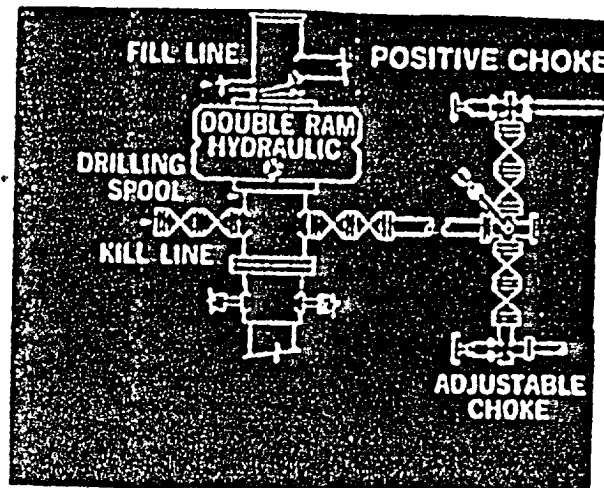
Certificate No.
NM PE&LS NO. 5412



RECEIVED

MAR 2 - 1988

DOGS OFFICE



RECEIVED
MAR 2 - 1988
OCD
HOBBS OFFICE

88-86-7 8204