

NE XICO OIL CONSERVATION COMMISSION
WELL LOCATION AND ACREAGE DEDICATION PLAT

Form C-102
Supersedes C-128
Effective 1-1-65

All distances must be from the outer boundaries of the Section.

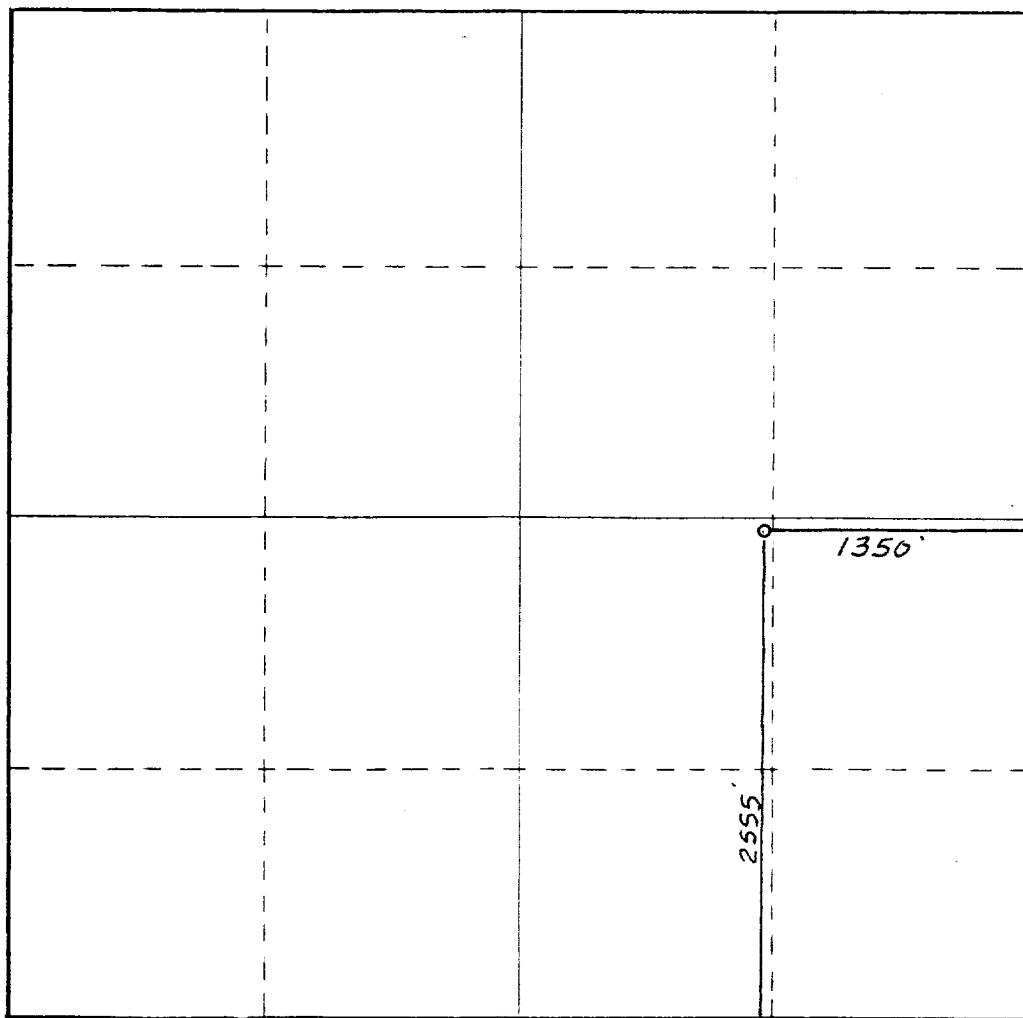
Operator SIRGO-COLLIER, INC.			Lease Skelly Penrose "B" Unit		Well No. 67
Unit Letter J	Section 5	Township 23 South	Range 37 East	County Lea County, N.M.	
Actual Footage Location of Well: 2555 feet from the South line and 1350 feet from the East line					
Ground Level Elev. 3336.	Producing Formation SR-Queen-Grayburg		Pool Langlie Matrix		Dedicated Acreage: 40 Acres

1. Outline the acreage dedicated to the subject well by colored pencil or hachure marks on the plat below.
2. If more than one lease is dedicated to the well, outline each and identify the ownership thereof (both as to working interest and royalty).
3. If more than one lease of different ownership is dedicated to the well, have the interests of all owners been consolidated by communitization, unitization, force-pooling, etc?

☒ Yes ☐ No If answer is "yes," type of consolidation R-2915, Unitization

If answer is "no," list the owners and tract descriptions which have actually been consolidated. (Use reverse side of this form if necessary.)

No allowable will be assigned to the well until all interests have been consolidated (by communitization, unitization, forced-pooling, or otherwise) or until a non-standard unit, eliminating such interests, has been approved by the Commission.



CERTIFICATION

I hereby certify that the information contained herein is true and complete to the best of my knowledge and belief.

Amy L. Whitley
Name

Amy L. Whitley
Position

Agent

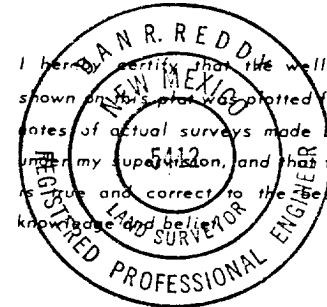
Company

Sirgo-Collier, Inc.

Date

May 9, 1988

I hereby certify that the well location shown on this plat was plotted from field notes of actual surveys made by me or under my supervision, and that the same are true and correct to the best of my knowledge and belief.



Date Surveyed

March 22, 1988

Registered Professional Engineer and/or Land Surveyor

Dan R. Reddy
Certificate No.

NM PE&LS NO. 5412



RECEIVED
MAY 11 1988
OCD
HOBBS OFFICE