

**NEW MEXICO OIL CONSERVATION COMMISSION
WELL LOCATION AND ACREAGE DEDICATION PLAT**

Form C-102
Supersedes C-128
Effective 1-1-65

All distances must be from the outer boundaries of the Section.

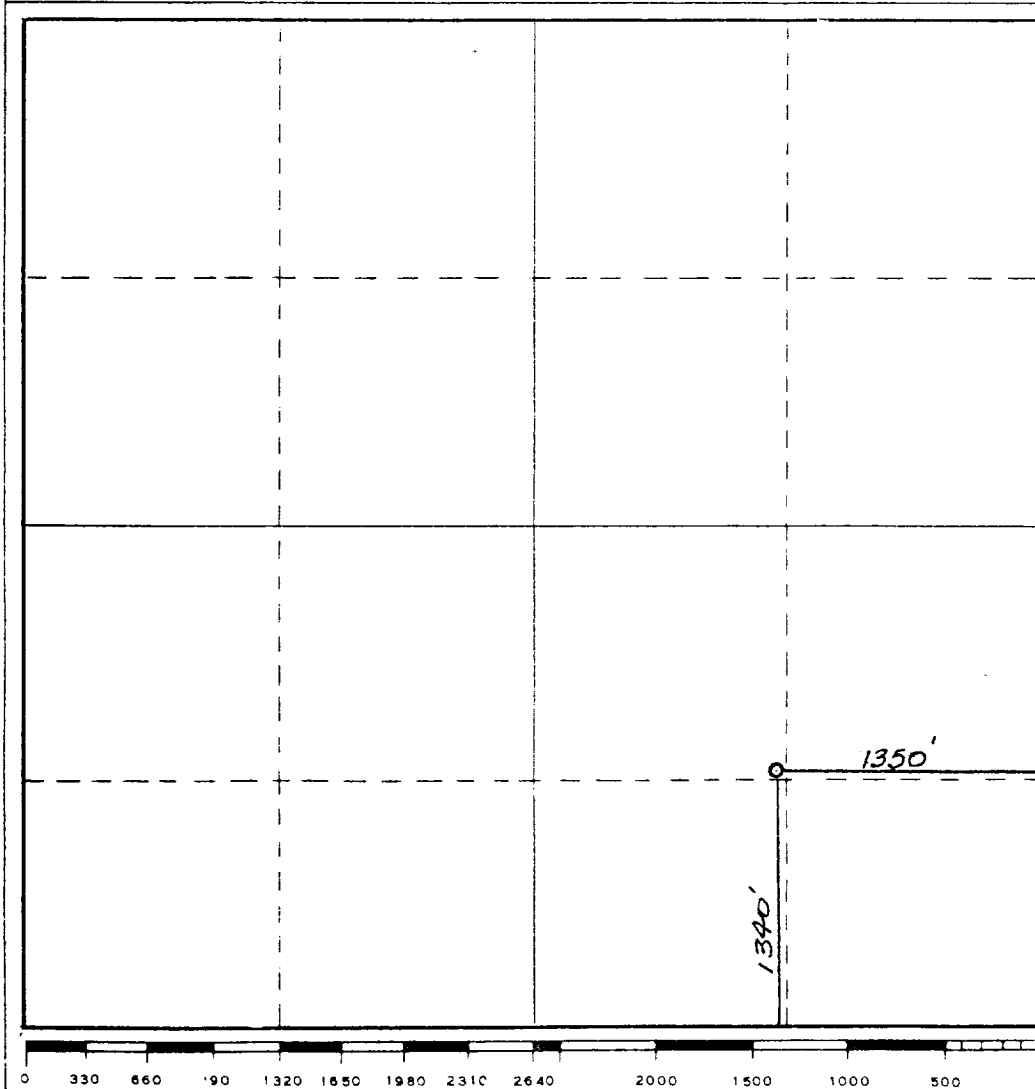
Operator SIRGO-COLLIER, INC.		Lease Skelly Penrose "B" Unit		Well No. 68
Unit Letter J	Section 5	Township 23 South	Range 37 East	County Lea County, N.M.
Actual Footage Location of Well: 1340 feet from the South line and 1350 feet from the East line				
Ground Level Elev. 3339.	Producing Formation SR-Queen-Grayburg	Pool Langlie Mattix	Dedicated Acreage: 40 Acres	

1. Outline the acreage dedicated to the subject well by colored pencil or hatchure marks on the plat below.
2. If more than one lease is dedicated to the well, outline each and identify the ownership thereof (both as to working interest and royalty).
3. If more than one lease of different ownership is dedicated to the well, have the interests of all owners been consolidated by communitization, unitization, force-pooling, etc?

☒ Yes ☐ No If answer is "yes," type of consolidation Unitization, R-2915

If answer is "no," list the owners and tract descriptions which have actually been consolidated. (Use reverse side of this form if necessary.) _____

No allowable will be assigned to the well until all interests have been consolidated (by communitization, unitization, forced-pooling, or otherwise) or until a non-standard unit, eliminating such interests, has been approved by the Commission.

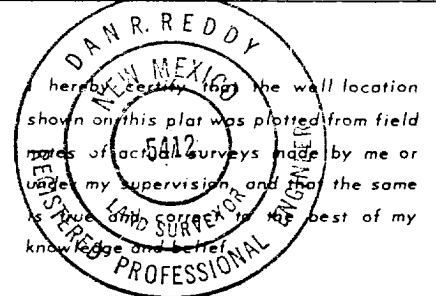


CERTIFICATION

I hereby certify that the information contained herein is true and complete to the best of my knowledge and belief.

Amy L. Whitley

Name
Amy L. Whitley
Position
Agent
Company
Sirgo-Collier, Inc.
Date
May 9, 1988



Date Surveyed
March 22, 1988
Registered Professional Engineer and/or Land Surveyor
Dan R. Reddy
Certificate No.
NM PE&LS NO. 5412