

DISTRICT I
P.O. Box 1980, Hobbs, NM 88241-1980
DISTRICT II
P.O. Box Drawer DD, Artesia, NM 88211-0719
DISTRICT III
1000 Rio Brazos Rd., Aztec, NM 87410
DISTRICT IV
P.O. Box 2088, Santa Fe, NM 87504-2088

State of New Mexico
Energy, Minerals and Natural Resources Department

OIL CONSERVATION DIVISION

P.O. Box 2088
Santa Fe, New Mexico 87504-2088

Form C-101
Revised February 10, 1999
Instructions on back
Submit to Appropriate District Office
State Lease - 6 Copies
Fee Lease - 5 Copies
AMENDED REPORT

APPLICATION FOR PERMIT TO DRILL, RE-ENTER, DEEPEN, PLUGBACK, OR ADD A ZONE

¹ Operator Name and Address TEXACO EXPLORATION & PRODUCTION INC. 205 E. Bender, HOBBS, NM 88240		² OGRID Number 022351
⁴ Property Code 11060	⁵ Property Name SIMS, R. R. "A"	³ API Number 30 025 30483 ⁶ Well No. 1

⁷ Surface Location

Ul or lot no	Section	Township	Range	Lot.Idn	Feet From The	North/South Line	Feet From The	East/West Line	County
N	4	23S	37E		330	S	2308	W	Lea

⁸ Proposed Bottom Hole Location If Different From Surface

Ul or lot no	Section	Township	Range	Lot.Idn	Feet From The	North/South Line	Feet From The	East/West Line	County
⁹ Proposed Pool 1 Teague L.Paddock-Blinbry,North Assoc					¹⁰ Proposed Pool 2				

¹¹ Work Type Code P	¹² WellType Code O	¹³ Rotary or C.T. Rotary	¹⁴ Lease Type Code P	¹⁵ Ground Level Elevation 3317' GR
¹⁶ Multiple No	¹⁷ Proposed Depth 10,254'	¹⁸ Formation Blinbry	¹⁹ Contractor	²⁰ Spud Date 11/20/00

²¹ Proposed Casing and Cement Program

SIZE OF HOLE	SIZE OF CASING	WEIGHT PER FOOT	SETTING DEPTH	SACKS OF CEMENT	EST. TOP
No Change					

22 Describe the proposed program. If this application is to DEEPEN or PLUG BACK give the data on the present productive zone and proposed new productive zone. Describe the blowout prevention program, if any. Use additional sheets if necessary.

Texaco intends to set CIBP & abandon the Wolfcamp & recompleat in the Teague Lower Paddock-Blinbry North Assoc Pool. The intended procedure is as follows:

- 1) MIRU PU. Instl bop. Rel pkr. Tih w/bit to 7240.
- 2) Set CIBP @ 7200 & test. Top w/35' cmt. Perf the Blinbry: 5542-46, 5560-62, 5604-14, 5636-40, 5686-88, 5704-10, 5724-38, 5764-68, 5796-5802, 5806-08.
- 3) TIH W/pkr & tbq. Acidize Blinbry w/5000 gals 15% NEFE HCL. TIH W/frac tbq & pkr. Frac treat Blinbry 5542-5608 ws/50,000 gals 40# XLG
- 4) RU coiled tbq. Flow back. Obtain test. LD tbq, pkr, & rem frac tree.
- 5) TIH W/prod tbq & pkr to 5500'. Swab.
- 6) OPT

Expiry Expires 1 Year from Approval
Date Initials
Plugback

²³ I hereby certify that the rules and regulations of the Oil Conservation Division have been complied with and that the information given above is true and complete to the best of my knowledge and belief.		OIL CONSERVATION DIVISION	
Signature <i>J. Denise Leake</i>		Approved By:	
Printed Name J. Denise Leake		Title: <i>Geologist</i>	
Title Engineering Assistant		Approval Date: Expiration Date:	
Date 11/16/00 Telephone 397-0405		Conditions of Approval: Attached <i>11/16/00</i>	

DISTRICT I

P.O. Box 1980, Hobbs, NM 88241-1980

DISTRICT II

P.O. Box Drawer DD, Artesia, NM 88211-0719

DISTRICT III

1000 Rio Brazos Rd., Aztec, NM 87410

DISTRICT IV

P.O. Box 2088, Santa Fe, NM 87504-2088

State of New Mexico

Energy, Minerals and Natural Resources Department

Form C-102

Revised February 10, 1999

Instructions on back

Submit to Appropriate District Office

State Lease - 4 Copies

Fee Lease - 3 Copies

AMENDED REPORT

OIL CONSERVATION DIVISION

P.O. Box 2088

Santa Fe, New Mexico 87504-2088

WELL LOCATION AND ACREAGE DEDICATION PLAT

¹ API Number 30 025 30483	² Pool Code 96314	³ Pool Name Teague L. Paddock-Blinebry, North Assoc
⁴ Property Code 11060	⁵ Property Name SIMS, R. R. "A"	⁶ Well No. 1
⁷ OGRID Number 022351	⁸ Operator Name TEXACO EXPLORATION & PRODUCTION INC.	⁹ Elevation 3317' GR

¹⁰ Surface Location

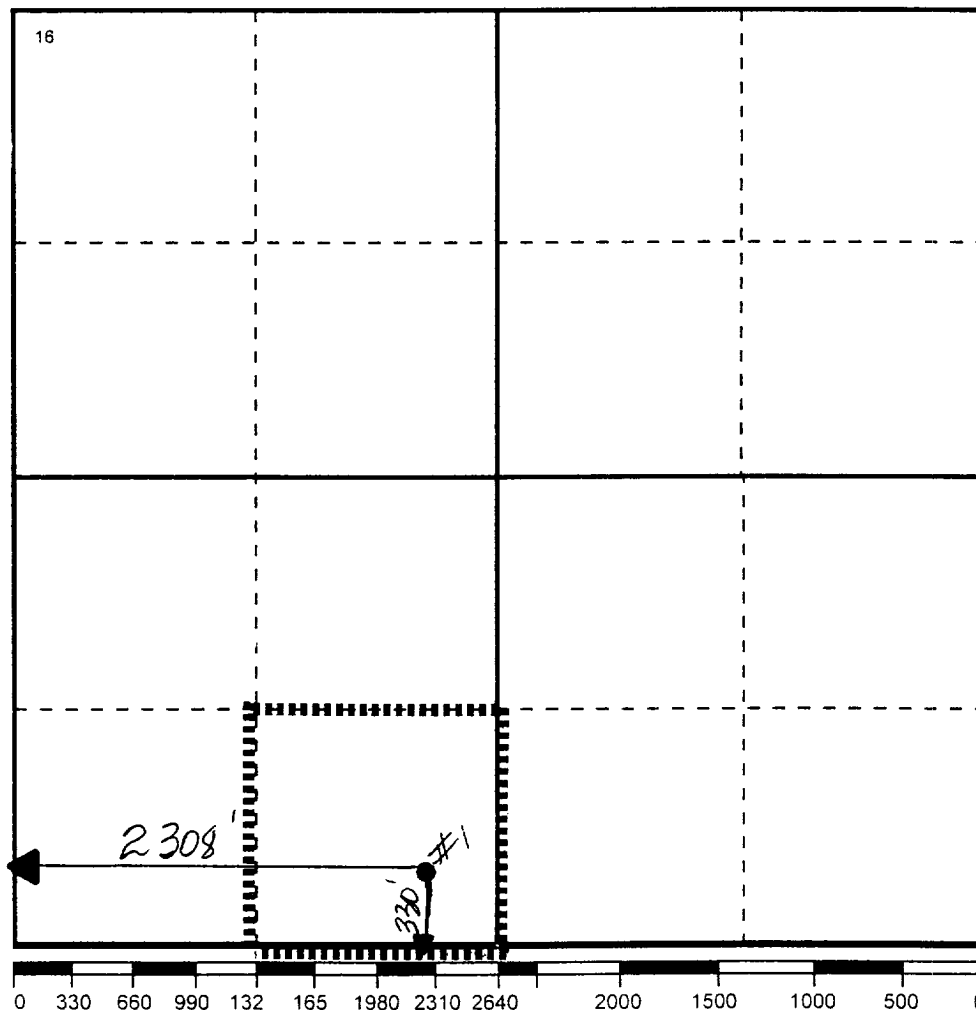
UI or lot no	Section	Township	Range	Lot.Idn	Feet From The	North/South Line	Feet From The	East/West Line	County
N	4	23S	37E		330	S	2308	W	Lea

¹¹ Bottom Hole Location If Different From Surface

UI or lot no	Section	Township	Range	Lot.Idn	Feet From The	North/South Line	Feet From The	East/West Line	County
--------------	---------	----------	-------	---------	---------------	------------------	---------------	----------------	--------

¹² Dedicated Acre 40	¹³ Joint or Infill No	¹⁴ Consolidation Code	¹⁵ Order No.
------------------------------------	-------------------------------------	----------------------------------	-------------------------

NO ALLOWABLE WILL BE ASSIGNED TO THIS COMPLETION UNTIL ALL INTERESTS HAVE BEEN CONSOLIDATED
OR A NON-STANDARD UNIT HAS BEEN APPROVED BY THE DIVISION

¹⁷ OPERATOR CERTIFICATION

I hereby certify that the information contained herein is true and complete to the best of my knowledge and belief

Signature

Printed Name

J. Denise Leake

Position

Engineering Assistant

Date

11/16/00

¹⁸ SURVEYOR CERTIFICATION

I hereby certify that the well location shown on this plat was plotted from field notes of actual surveys made by me or under my supervision, and that the same is true and correct to the best of my knowledge and belief.

Date Surveyed

Signature & Seal of

Professional Surveyor

Certificate No.