

Submit to Appropriate  
District Office  
State Lease - 4 copies  
Fee Lease - 3 copies

State of New Mexico  
Geology, Minerals and Natural Resources Department

Form C-182  
Revised 1-1-89

OIL CONSERVATION DIVISION

DISTRICT I  
P.O. Box 1980, Hobbs, NM 88240

P.O. Box 2088

Santa Fe, New Mexico 87504-2088

DISTRICT II  
P.O. Drawer DD, Artesia, NM 88210

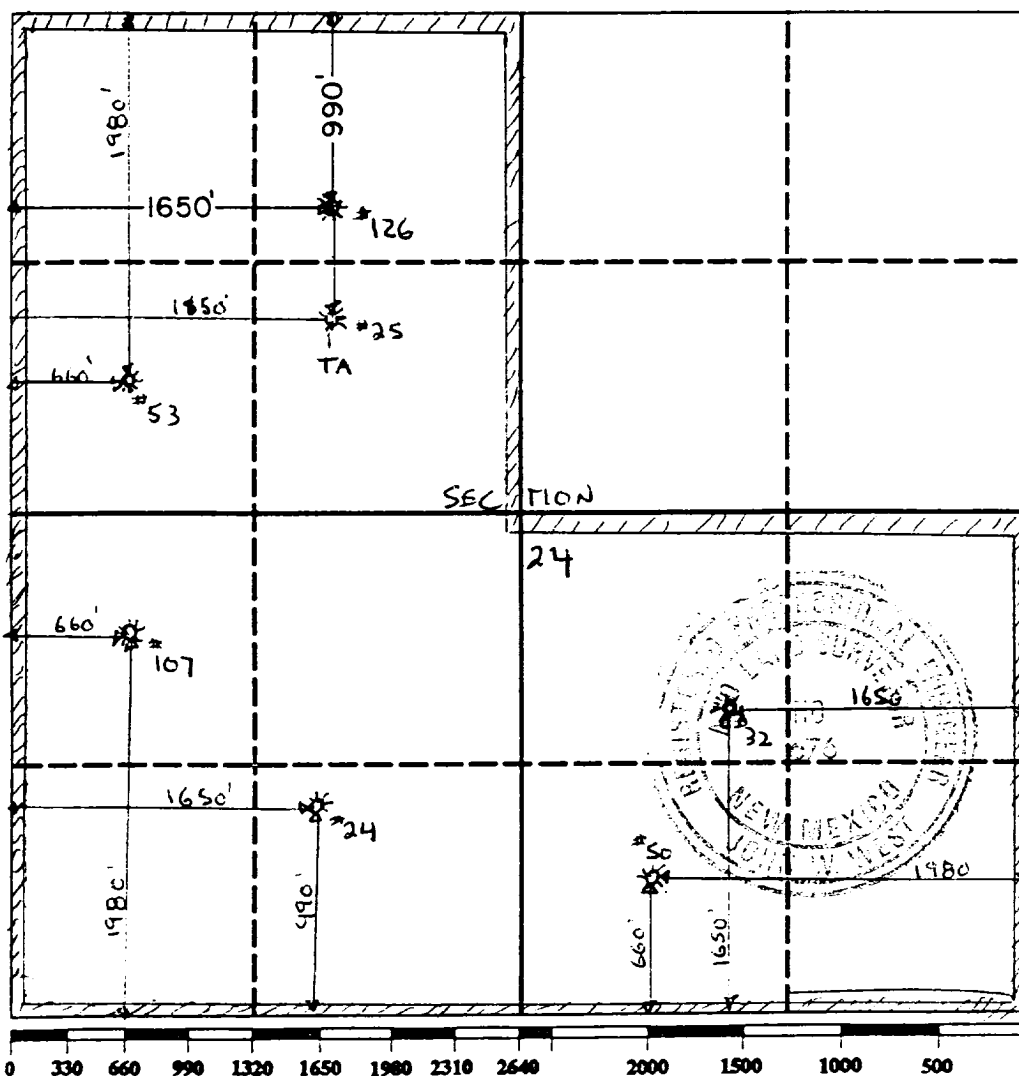
DISTRICT III  
1000 Rio Brazos Rd., Aztec, NM 87410

WELL LOCATION AND ACREAGE DEDICATION PLAT

All Distances must be from the outer boundaries of the section

Operator HAL RASMUSSEN OPERATING CO.,			Lease State "A" Account 1		Well No. 126
Unit Letter C	Section 24	Township 23 South	Range 36 East	County Lea	
Actual Footage Location of Well: 990 feet from the North line and 1650 feet from the West line					
Ground level Elev. 3349.1	Producing Formation YATES - 7R	Pool JALMAT TNSL-YTS-7R		Dedicated Acreage: 480 Acres	

- Outline the acreage dedicated to the subject well by colored pencil or hatchure marks on the plat below.
- If more than one lease is dedicated to the well, outline each and identify the ownership thereof (both as to working interest and royalty).
- If more than one lease of different ownership is dedicated to the well, have the interest of all owners been consolidated by communitization, unitization, force-pooling, etc.?  
☐ Yes ☐ No If answer is "yes" type of consolidation \_\_\_\_\_  
If answer is "no" list the owners and tract descriptions which have actually been consolidated. (Use reverse side of this form if necessary).  
No allowable will be assigned to the well until all interests have been consolidated (by communitization, unitization, forced-pooling, or otherwise) or until a non-standard unit, eliminating such interest, has been approved by the Division.



OPERATOR CERTIFICATION

I hereby certify that the information contained herein is true and complete to the best of my knowledge and belief.

Signature  
Printed Name  
JAY CHERSKI  
Position  
ENGINEER  
Company  
HAL I RASMUSSEN OPER  
Date  
10/22/90

SURVEYOR CERTIFICATION

I hereby certify that the well location shown on this plat was plotted from field notes of actual surveys made by me or under my supervision, and that the same is true and correct to the best of my knowledge and belief.

Date Surveyed  
october 20, 1990

Signature & Seal of  
Professional Surveyor

Signature  
RONALD J. EIDSON  
Certificate No. 676  
3239

75 7-21 7 21  
173

RECEIVED  
OCT 22 1990  
GOD  
HOBBS OFFICE