

# OIL CONSERVATION DIVISION

P.O. Box 2088

Santa Fe, New Mexico 87504-2088

## DISTRICT I

P.O. Box 1980, Hobbs, NM 88240

## DISTRICT II

P.O. Drawer DD, Artesia, NM 88210

## DISTRICT III

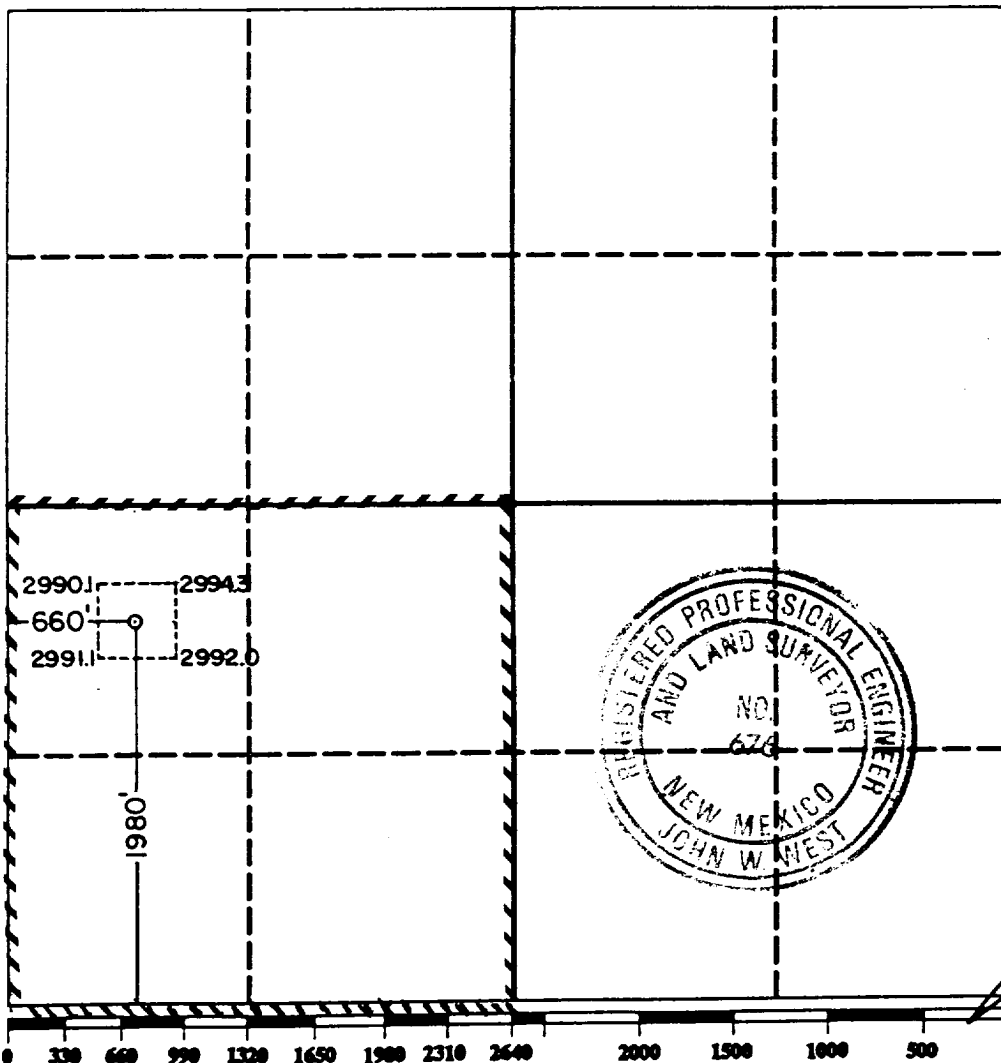
1000 Rio Brazos Rd., Aztec, NM 87410

## WELL LOCATION AND ACREAGE DEDICATION PLAT

All Distances must be from the outer boundaries of the section

Operator Meridian Oil Inc.		Lease C. C. Cagle "C" Fed		Well No. 4
Unit Letter L	Section 3	Township 26 South	Range 37 East	County Lea
Actual Footage Location of Well: 1980 feet from the South line and 660 feet from the West line				
Ground level Elev. 2991.1	Producing Formation Yates Sand	Pool Rhodes GAS	Dedicated Acreage: 160 Acres	

- Outline the acreage dedicated to the subject well by colored pencil or hatchure marks on the plat below.
- If more than one lease is dedicated to the well, outline each and identify the ownership thereof (both as to working interest and royalty).
- If more than one lease of different ownership is dedicated to the well, have the interest of all owners been consolidated by communitization, unitization, force-pooling, etc.?  
☐ Yes ☐ No If answer is "yes" type of consolidation \_\_\_\_\_  
If answer is "no" list the owners and tract descriptions which have actually been consolidated. (Use reverse side of this form if necessary.)  
No allowable will be assigned to the well until all interests have been consolidated (by communitization, unitization, forced-pooling, or otherwise) or until a non-standard unit, eliminating such interest, has been approved by the Division.



### OPERATOR CERTIFICATION

I hereby certify that the information contained herein is true and complete to the best of my knowledge and belief.

Signature  
Printed Name  
Position  
Company  
Date

Connie Malik  
Connie Malik  
Reg. Compliance Rep.  
Meridian Oil  
6-6-91

### SURVEYOR CERTIFICATION

I hereby certify that the well location shown on this plat was plotted from field notes of actual surveys made by me or under my supervision, and that the same is true and correct to the best of my knowledge and belief.

Date Surveyed  
May 9, 1991

Signature & Seal of  
Professional Surveyor

Certificate No.  
JOHN W. WEST, 676  
RONALD J. EIDSON, 3239

RECEIVED

JUL 11 1991

022

MOBBS OFFICE