

## DISTRICT I

P.O. Box 1980, Hobbs, NM 88241-1980

## DISTRICT II

P.O. Box Drawer DD, Artesia, NM 88211-0719

## DISTRICT III

1000 Rio Brazos Rd., Aztec, NM 87410

## DISTRICT IV

P.O. Box 2088, Santa Fe, NM 87504-2088

State of New Mexico

Energy, Minerals and Natural Resources Department

Form C-10/

Revised February 10, 1999

Instructions on back

Submit to Appropriate District Office

State Lease - 6 Copies

Fee Lease - 5 Copies

AMENDED REPORT

## OIL CONSERVATION DIVISION

P.O. Box 2088

Santa Fe, New Mexico 87504-2088

## APPLICATION FOR PERMIT TO DRILL, RE-ENTER, DEEPEN, PLUGBACK, OR ADD A ZONE

<sup>1</sup> Operator Name and Address		<sup>2</sup> OGRID Number
TEXACO EXPLORATION & PRODUCTION INC.		022351
205 E. Bender, HOBBS, NM 88240		<sup>3</sup> API Number
		3002531500
<sup>4</sup> Property Code	<sup>5</sup> Property Name	<sup>6</sup> Well No.
010926	OK WEST DOLLARHIDE DRINKARD UNIT <del>Tubb-Drinkard A-60</del>	118

<sup>7</sup> Surface Location

UI or lot no	Section	Township	Range	Lot.Idn	Feet From The	North/South Line	Feet From The	East/West Line	County
C	5	25S	38E		1119	NORTH	2322	WEST	LEA

<sup>8</sup> Proposed Bottom Hole Location If Different From Surface

UI or lot no	Section	Township	Range	Lot.Idn	Feet From The	North/South Line	Feet From The	East/West Line	County
	5	25S	38E		1135	NORTH	735	EAST	LEA

<sup>9</sup> Proposed Pool 1	<sup>10</sup> Proposed Pool 2
WEST DOLLARHIDE DRINKARD <del>Tubb-Drinkard A-60</del>	

<sup>11</sup> Work Type Code	<sup>12</sup> Well Type Code	<sup>13</sup> Rotary or C.T.	<sup>14</sup> Lease Type Code	<sup>15</sup> Ground Level Elevation
P	O		S	GR-3137', KB-3155'
<sup>16</sup> Multiple	<sup>17</sup> Proposed Depth	<sup>18</sup> Formation	<sup>19</sup> Contractor	<sup>20</sup> Spud Date
No	8510 MD	DOLLARHIDE DRNKRD		11/1/00

<sup>21</sup> Proposed Casing and Cement Program

SIZE OF HOLE	SIZE OF CASING	WEIGHT PER FOOT	SETTING DEPTH	SACKS OF CEMENT	EST. TOP
14 3/4	11 3/4		1180	800 SX- CIRC 200 SX	
11	8 5/8		4200	1380 SX- CIRC 150 SX	
7 7/8	5 1/2		7480	1150 SX- CIRC 57 SX	

<sup>22</sup> Describe the proposed program. If this application is to DEEPEN or PLUG BACK give the data on the present productive zone and proposed new productive zone. Describe the blowout prevention program, if any. Use additional sheets if necessary.

TEXACO INTENDS TO DRILL A HORIZONTAL LATERAL IN THE SUBJECT WELL.

TOP OF WINDOW: 6263' MD

BTM OF WINDOW: 6270' MD

KICK OFF POINT: 6273' MD

Permit Expires 1 Year From Approval  
Date Unless Drilling Underway

*Lateral*

<sup>23</sup> I hereby certify that the rules and regulations of the Oil Conservation Division have been complied with and that the information given above is true and complete to the best of my knowledge and belief.

Signature

*J. Denise Leake*

Printed Name

J. Denise Leake

Title

Engineering Assistant

Date

8/21/00

Telephone

397-0405

## OIL CONSERVATION DIVISION

Approved By:

ORIGINAL SIGNED BY CHAD W. HANE  
DISTRICT SUPERVISOR

Title:

Approval Date:

Conditions of Approval:

Attached

Expiration Date:

RECEIVED  
JUN 10 1966  
LIBRARY  
OF THE  
U.S. DEPARTMENT OF  
COMMERCE

DISTRICT I  
P.O. Box 1980, Hobbs, NM 88241-1980  
DISTRICT II  
P.O. Box Drawer DD, Artesia, NM 88211-0719  
DISTRICT III  
1000 Rio Brazos Rd., Aztec, NM 87410  
DISTRICT IV  
P.O. Box 2088, Santa Fe, NM 87504-2088

State of New Mexico  
Energy, Minerals and Natural Resources Department

OIL CONSERVATION DIVISION

P.O. Box 2088  
Santa Fe, New Mexico 87504-2088

Form C-102  
Revised February 10, 1999  
Instructions on back  
Submit to Appropriate District Office  
State Lease - 4 Copies  
Fee Lease - 3 Copies  
AMENDED REPORT

WELL LOCATION AND ACREAGE DEDICATION PLAT

1 API Number 3002531500	2 Pool Code 18830	3 Pool Name DOLLARHIDE TUBB DRINKARD <i>ABO</i>
4 Property Code 010926	5 Property Name WEST DOLLARHIDE DRINKARD UNIT	6 Well No. 118
7 OGRID Number 022351	8 Operator Name TEXACO EXPLORATION & PRODUCTION INC.	9 Elevation GR-3137', KB-3155'

10 Surface Location

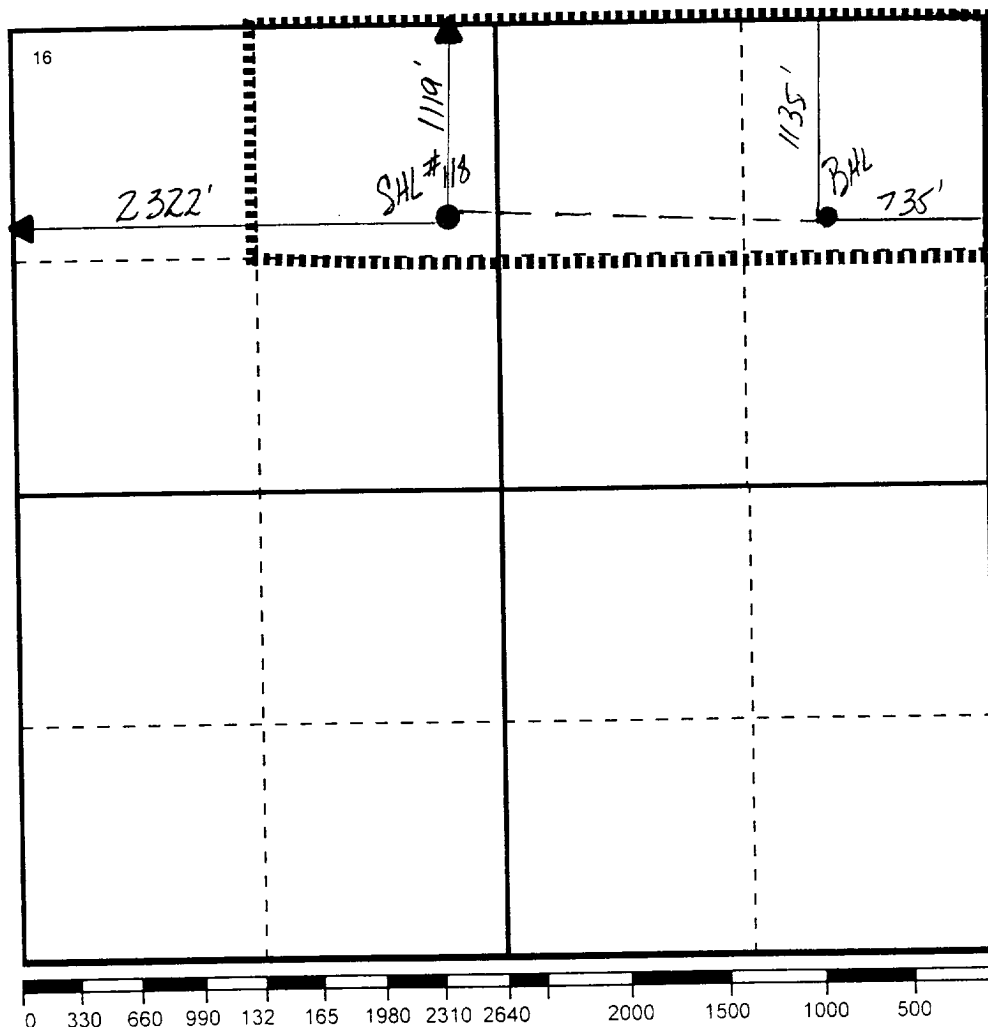
UI or lot no	Section	Township	Range	Lot.Idn	Feet From The	North/South Line	Feet From The	East/West Line	County
C	5	25S	38E		1119	NORTH	2322	WEST	LEA

11 Bottom Hole Location If Different From Surface

UI or lot no	Section	Township	Range	Lot.Idn	Feet From The	North/South Line	Feet From The	East/West Line	County
A	5	25S	38E		1135	NORTH	735	EAST	LEA

12 Dedicated Acre 120	13 Joint or Infill No	14 Consolidation Code	15 Order No.
--------------------------	--------------------------	-----------------------	--------------

NO ALLOWABLE WILL BE ASSIGNED TO THIS COMPLETION UNTIL ALL INTERESTS HAVE BEEN CONSOLIDATED  
OR A NON-STANDARD UNIT HAS BEEN APPROVED BY THE DIVISION



17 OPERATOR CERTIFICATION

I hereby certify that the information  
contained herein is true and complete to the  
best of my knowledge and belief

Signature  
*J. Denise Leake*  
Printed Name

J. Denise Leake

Position  
Engineering Assistant

Date  
8/21/00

18 SURVEYOR CERTIFICATION

I hereby certify that the well location shown  
on this plat was plotted from field notes of  
actual surveys made by me or under my  
supervision, and that the same is true and  
correct to the best of my knowledge and  
belief.

Date Surveyed

Signature & Seal of  
Professional Surveyor

Certificate No.