

DISTRICT I

P.O. Box 1980, Hobbs, NM 88241-1980

DISTRICT II

P.O. Box Drawer DD, Artesia, NM 88211-0719

DISTRICT III

1000 Rio Brazos Rd., Aztec, NM 87410

DISTRICT IV

P.O. Box 2088, Santa Fe, NM 87504-2088

State of New Mexico

Energy, Minerals and Natural Resources Department

Form C-10

Revised February 10, 1999

Instructions on back

Submit to Appropriate District Office

State Lease - 6 Copy

Fee Lease - 5 Copy

☐ AMENDED REPORT

OIL CONSERVATION DIVISION

P.O. Box 2088

Santa Fe, New Mexico 87504-2088

APPLICATION FOR PERMIT TO DRILL, RE-ENTER, DEEPEN, PLUGBACK, OR ADD A ZONE

¹ Operator Name and Address TEXACO EXPLORATION & PRODUCTION INC. 205 E. Bender, HOBBS, NM 88240		² OGRID Number 022351
⁴ Property Code 11060		³ API Number 30 025 31538
⁵ Property Name R.R. SIMS, RR "A"		⁶ Well No. 2

⁷ Surface Location

Ul or lot no	Section	Township	Range	Lot.Idn	Feet From The	North/South Line	Feet From The	East/West Line	County
N	4	23S	37E		660	S	1650	W	LEA

⁸ Proposed Bottom Hole Location If Different From Surface

Ul or lot no	Section	Township	Range	Lot.Idn	Feet From The	North/South Line	Feet From The	East/West Line	County
⁹ Proposed Pool 1 TEAGUE SAN ANDRES, NORTH					¹⁰ Proposed Pool 2				

¹¹ Work Type Code P	¹² WellType Code O	¹³ Rotary or C.T. ROTARY	¹⁴ Lease Type Code P	¹⁵ Ground Level Elevation 3320' GR
¹⁶ Multiple No	¹⁷ Proposed Depth 8965'	¹⁸ Formation SAN ANDRES	¹⁹ Contractor	²⁰ Spud Date 11/15/00

²¹ Proposed Casing and Cement Program

SIZE OF HOLE	SIZE OF CASING	WEIGHT PER FOOT	SETTING DEPTH	SACKS OF CEMENT	EST. TOP
12 1/4"	9 5/8"	40#	3750'	1565 sx	
7 7/8"	5 1/2"	17#	8780'	400 sx	TOC 400'

²² Describe the proposed program. If this application is to DEEPEN or PLUG BACK give the data on the present productive zone and proposed new productive zone. Describe the blowout prevention program, if any. Use additional sheets if necessary.

TEXACO INTENDS TO RECOMPLETE THE SUBJECT WELL TO THE SAN ANDRES FORMATION. THE INTENDED PROCEDURE IS AS FOLLOWS:

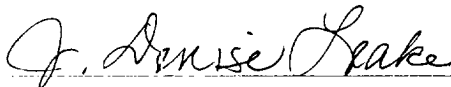
- 1) MIRU PU. INSTL BOP. TIH TO 6500'. TIH W/CIBP & SET ABOVE DRINKARD ABO PERF 6450'. TOP W/35' CMT & TEST FOR NMOCD. ABANDON.
- 2) TIH W/PERF GUN & PERF 3938-3954 & 3990-4004.
- 3) TIH W/SONIC HAMMER TOOL & ACID WASH PERFS W/2000 GALS 15% NEFE HCL. SWAB.
- 4) TIH W/PROD EQPT TC TEST SAN ANDRES. OPT.

Permit Expires 1 Year From Approval
Date Unless ~~Drilling~~ Underway

Plug-Back

²³ I hereby certify that the rules and regulations of the Oil Conservation Division have been complied with and that the information given above is true and complete to the best of my knowledge and belief.

Signature



Printed Name

J. Denise Leake

Title

Engineering Assistant

Date

10/19/00

Telephone

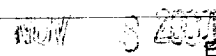
397-0405

OIL CONSERVATION DIVISION

ORIGINAL SIGNED BY CHRIS WILLIAMS
Approved By: DISTRICT I SUPERVISOR

Title:

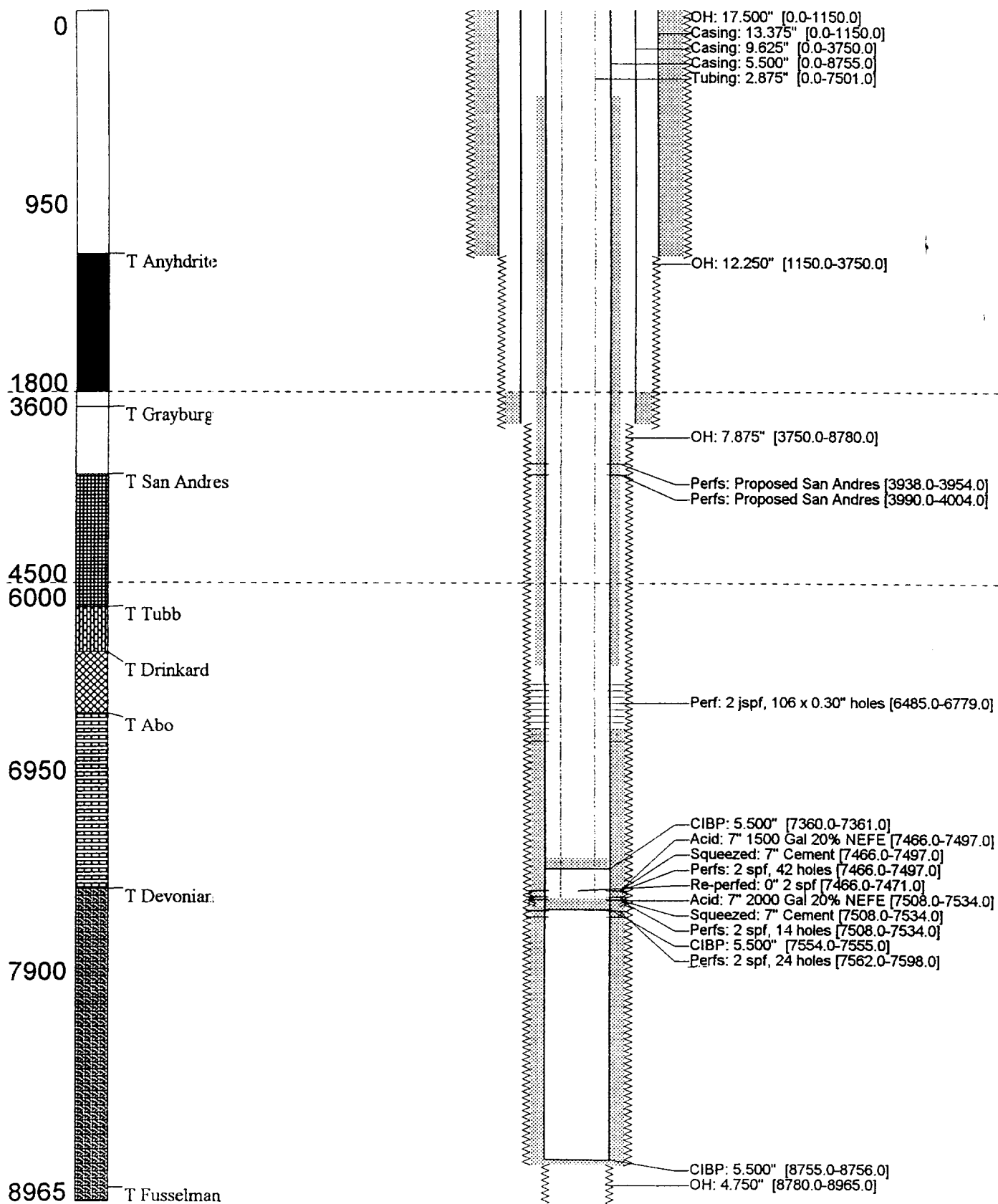
Approval Date:



Expiration Date:

Conditions of Approval:

Attached ☐



DISTRICT I

P.O. Box 1980, Hobbs, NM 88241-1980

DISTRICT II

P.O. Box Drawer DD, Artesia, NM 88211-0719

DISTRICT III

1000 Rio Brazos Rd., Aztec, NM 87410

DISTRICT IV

P.O. Box 2088, Santa Fe, NM 87504-2088

State of New Mexico
Energy, Minerals and Natural Resources Department

Form C-10 Z

Revised February 10, 1999

Instructions on back

Submit to Appropriate District Office

State Lease - 4 Copy

Fee Lease - 3 Copy

☐ AMENDED REPORT

OIL CONSERVATION DIVISION

P.O. Box 2088
Santa Fe, New Mexico 87504-2088

WELL LOCATION AND ACREAGE DEDICATION PLAT

¹ API Number 30 025 31538	² Pool Code 96197	³ Pool Name TEAGUE SAN ANDRES NORTH
⁴ Property Code 11060	⁵ Property Name P.R. SIMS, D.R. "A"	⁶ Well No. 2
⁷ OGRID Number 022351	⁸ Operator Name TEXACO EXPLORATION & PRODUCTION INC.	⁹ Elevation 3320' GR

¹⁰ Surface Location

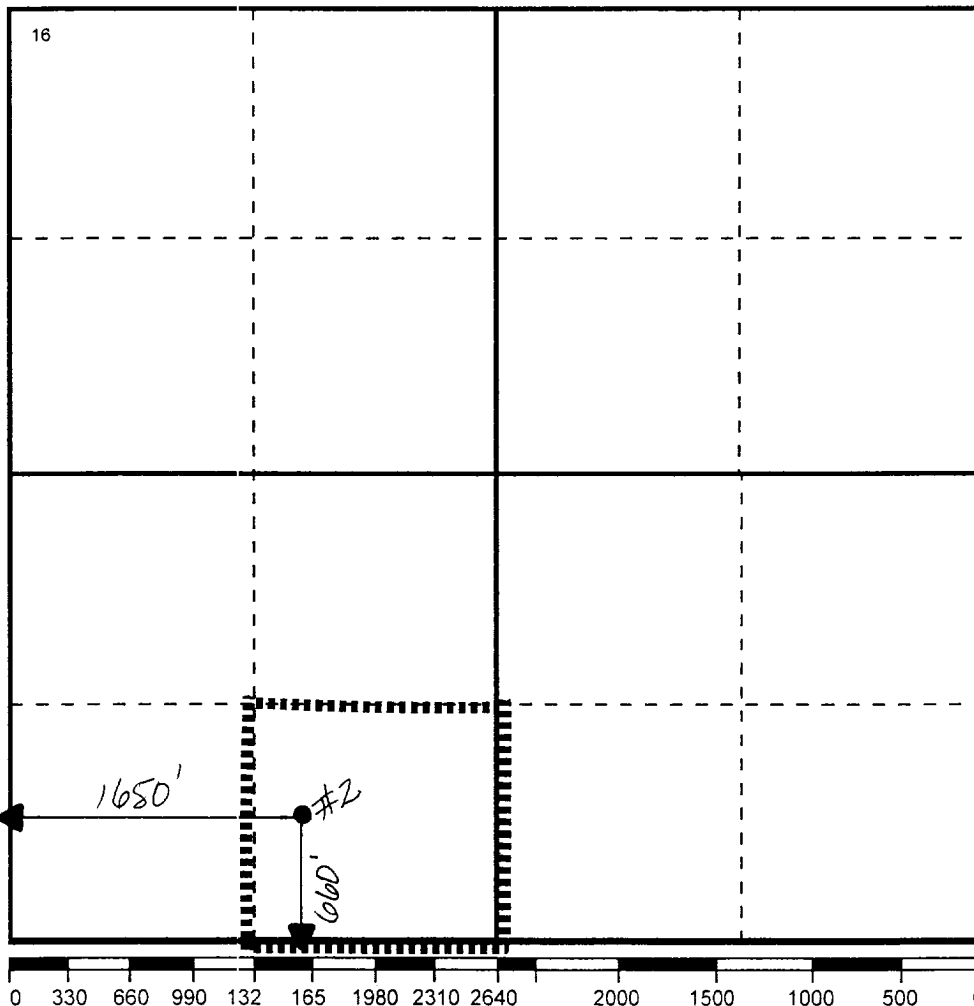
Ul or lot no	Section	Township	Range	Lot.Idn	Feet From The	North/South Line	Feet From The	East/West Line	County
N	4	23S	37E		660	S	1650	W	LEA

¹¹ Bottom Hole Location If Different From Surface

Ul or lot no	Section	Township	Range	Lot.Idn	Feet From The	North/South Line	Feet From The	East/West Line	County

¹² Dedicated Acre 40	¹³ Joint or Infill No	¹⁴ Consolidation Code	¹⁵ Order No.
------------------------------------	-------------------------------------	----------------------------------	-------------------------

NO ALLOWABLE WILL BE ASSIGNED TO THIS COMPLETION UNTIL ALL INTERESTS HAVE BEEN CONSOLIDATED
OR A NON-STANDARD UNIT HAS BEEN APPROVED BY THE DIVISION

¹⁷ OPERATOR CERTIFICATION

I hereby certify that the information contained herein is true and complete to the best of my knowledge and belief

Signature

Printed Name

J. Denise Leake

Position

Engineering Assistant

Date

10/19/00

¹⁸ SURVEYOR CERTIFICATION

I hereby certify that the well location shown on this plat was plotted from field notes of actual surveys made by me or under my supervision, and that the same is true and correct to the best of my knowledge and belief.

Date Surveyed

Signature & Seal of

Professional Surveyor

Certificate No.