

Submit to Appropriate
District Office
State Lease - 6 copies
Fee Lease - 5 copies

State of New Mexico
Energy, Minerals and Natural Resources Department

Form C-101
Revised 1-1-89

OIL CONSERVATION DIVISION

DISTRICT I
P.O. Box 1980, Hobbs, NM 88240

DISTRICT II
P.O. Drawer DD, Artesia, NM 88210

DISTRICT III
1000 Rio Brazos Rd., Aztec, NM 87410

P.O. Box 2088
Santa Fe, New Mexico 87504-2088

API NO. (assigned by OCD on New Wells)

3D-025-31538

5. Indicate Type of Lease

STATE ☐

FEE ☒

6. State Oil & Gas Lease No.

6313726

APPLICATION FOR PERMIT TO DRILL, DEEPEN, OR PLUG BACK

1a. Type of Work:

DRILL ☒

RE-ENTER ☐

DEEPEN ☐

PLUG BACK ☐

b. Type of Well:

OIL

WELL ☒

GAS

WELL ☐

OTHER ☐

SINGLE

ZONE ☒

MULTIPLE

ZONE ☐

2. Name of Operator

TEXACO EXPLORATION AND PRODUCTION INC.

8. Well No.

2

3. Address of Operator

P. O. Box 3109, Midland, Texas 79702

9. Pool name or Wildcat

TEAGUE FUSSELMAN, NORTH

4. Well Location

Unit Letter M : 330 Feet From The SOUTH Line and 989 Feet From The WEST Line

Section 4

Township 23-SOUTH

Range 37-EAST

NMPM

LEA

County

10. Proposed Depth

8950'

11. Formation

FUSSELMAN

12. Rotary or C.T.

R

13. Elevations (Show whether DF, RT, GR, etc.)

GR-3323'

14. Kind & Status Plug. Bond

BLANKET

15. Drilling Contractor

16. Approx. Date Work will start

05-04-92

17.

PROPOSED CASING AND CEMENT PROGRAM

SIZE OF HOLE	SIZE OF CASING	WEIGHT PER FOOT	SETTING DEPTH	SACKS OF CEMENT	EST. TOP
22 1/2	18 5/8	87.5#	40'	REDI-MIX	SURFACE
17 1/2	13 3/8	54.5#	1180'	1100	SURFACE
12 1/4	9 5/8	40#	3750'	1575	SURFACE
8 3/4	5 1/2	17#	8950'	2100	SURFACE

CEMENTING PROGRAM: CONDUCTOR - REDI-MIX

SURFACE - 900 SACKS CLASS H w/ 2% GEL & 2% CaCl₂ (14.8ppg, 1.36f3/s, 6.4gw/s). F/B 200 SACKS CLASS H w/ 2% CaCl₂ (15.6ppg, 1.19f3/s, 5.2gw/s).

INTERMEDIATE - 1st STAGE: 900 SACKS 50/50 POZ CLASS H w/ 2% GEL & 5% SALT (14.25ppg, 1.28f3/s, 5.75gw/s).

F/B 250 SACKS CLASS H w/ 2% CaCl₂ (15.6ppg, 1.19f3/s, 5.2gw/s). 2nd STAGE: DV TOOL @ 1250'. 425 SACKS

CLASS H w/ 2% CaCl₂ (15.6ppg, 1.19f3/s, 5.2gw/s).

PRODUCTION - 1st STAGE: 500 SACKS 35/65 POZ CLASS H w/ 6% GEL, 5% SALT & 1/4# FLOCELE (12.8ppg, 1.87f3/s, 9.9gw/s).

F/B 250 SACKS CLASS H w/ 1/4# FLOCELE & 0.6% HALAD-9 (15.6ppg, 1.18f3/s, 5.2gw/s). 2nd STAGE:

DV TOOL @ 7000'. 1100 SACKS 35/65 POZ CLASS H w/ 6% GEL, 5% SALT & 1/4# FLOCELE (12.8ppg, 1.87f3/s, 9.9gw/s).

F/B 250 SACKS CLASS H (15.6ppg, 1.18f3/s, 5.2gw/s).

THERE ARE NO OTHER OPERATORS IN THIS QUARTER QUARTER SECTION.

IN ABOVE SPACE DESCRIBE PROPOSED PROGRAM: IF PROPOSAL IS TO DEEPEN OR PLUG BACK, GIVE DATA ON PRESENT PRODUCTIVE ZONE AND PROPOSED NEW PRODUCTIVE ZONE. GIVE BLOWOUT PREVENTER PROGRAM, IF ANY.

I hereby certify that the information above is true and complete to the best of my knowledge and belief.

SIGNATURE

C. P. Basham / cwh

TITLE

DRILLING OPERATIONS MANAGER

DATE

03-24-92

TYPE OR PRINT NAME

C. P. BASHAM

TELEPHONE NO. 915-688-4620

(This space for State Use)

Orig. Signed by
Paul Kautz
Geologist

APPROVED BY

TITLE

DATE

MAR 26

CONDITIONS OF APPROVAL, IF ANY:

Permit Expires 6 Months From Approval
Date Unless Drilling Underway.

OIL CONSERVATION DIVISION

P.O. Box 2088

Santa Fe, New Mexico 87504-2088

DISTRICT I

P.O. Box 1980, Hobbs, NM 88240

DISTRICT II

P.O. Drawer DD, Artesia, NM 88210

DISTRICT III

000 Rio Brazos Rd., Aztec, NM 87410

WELL LOCATION AND ACREAGE DEDICATION PLAT

All Distances must be from the outer boundaries of the section

Operator TEXACO EXPL. AND PROD. Inc.			Lease R. R. SIMS		Well No. 2
Unit Letter M	Section 4	Township 23-South	Range 37-East	County Lea	
Actual Footage Location of Well: 330 feet from the South line and 989 feet from the West line					
Ground level Elev. 3323	Producing Formation Fusselman		Pool Teaque Fusselman, North	Dedicated Acreage: 40 Acres	

1. Outline the acreage dedicated to the subject well by colored pencil or hatchure marks on the plat below.

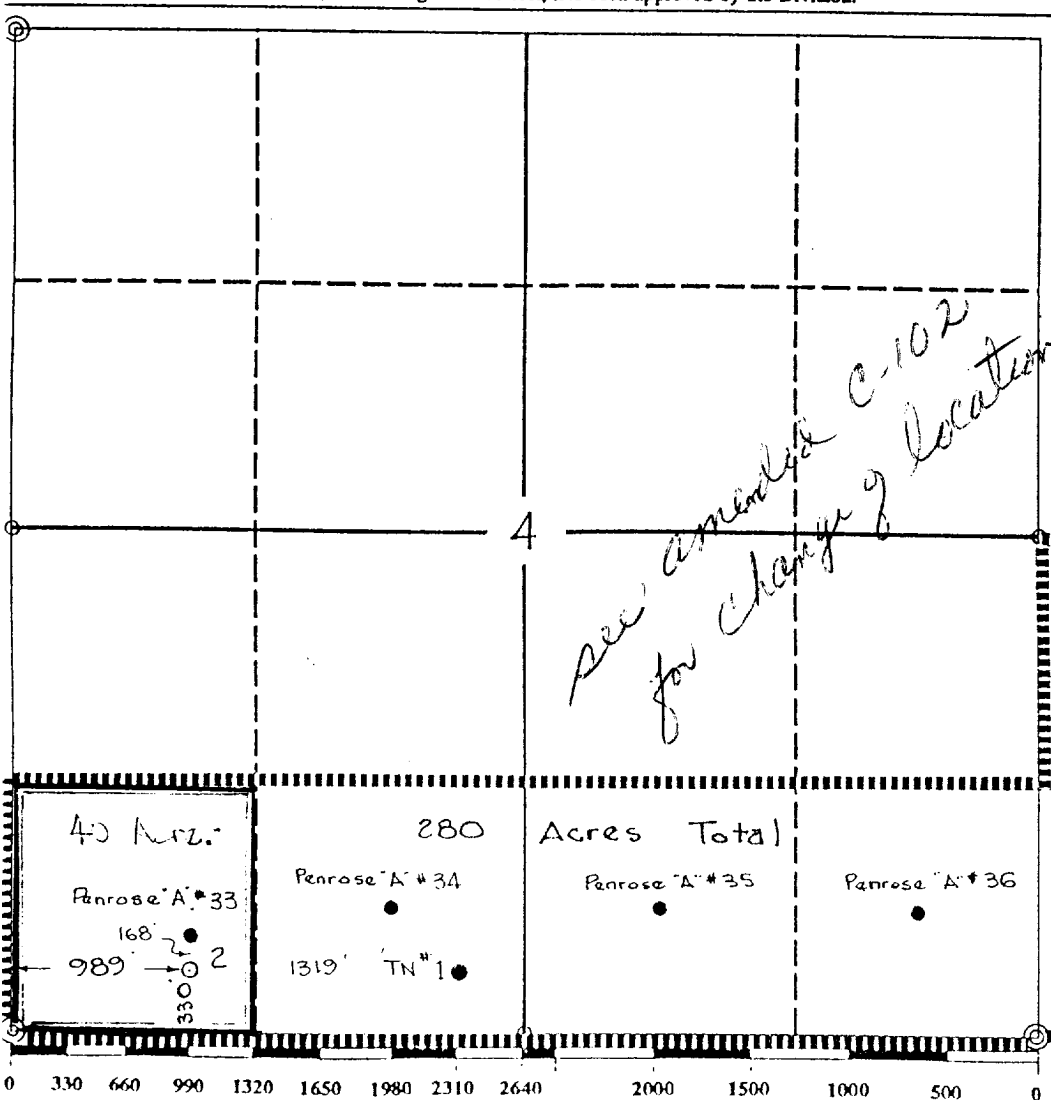
2. If more than one lease is dedicated to the well, outline each and identify the ownership thereof (both as to working interest and royalty).

3. If more than one lease of different ownership is dedicated to the well, have the interest of all owners been consolidated by communitization, unitization, force-pooling, etc.?

☐ Yes ☐ No If answer is "yes" type of consolidation _____

If answer is "no" list the owners and tract descriptions which have actually been consolidated. (Use reverse side of this form if necessary.) _____

No allowable will be assigned to the well until all interests have been consolidated (by communitization, unitization, forced-pooling, or otherwise) or until a non-standard unit, eliminating such interest, has been approved by the Division.



OPERATOR CERTIFICATION

I hereby certify that the information contained herein is true and complete to the best of my knowledge and belief.

Signature

Royce D. Mariott

Printed Name

Royce D. Mariott

Position

Division Surveyor

Company

Texaco Expl. & Prod.

Date

March 20, 1992

SURVEYOR CERTIFICATION

I hereby certify that the well location shown on this plat was plotted from field notes of actual surveys made by me or under my supervision, and that the same is true and correct to the best of my knowledge and belief.

Date Surveyed

March 19, 1992

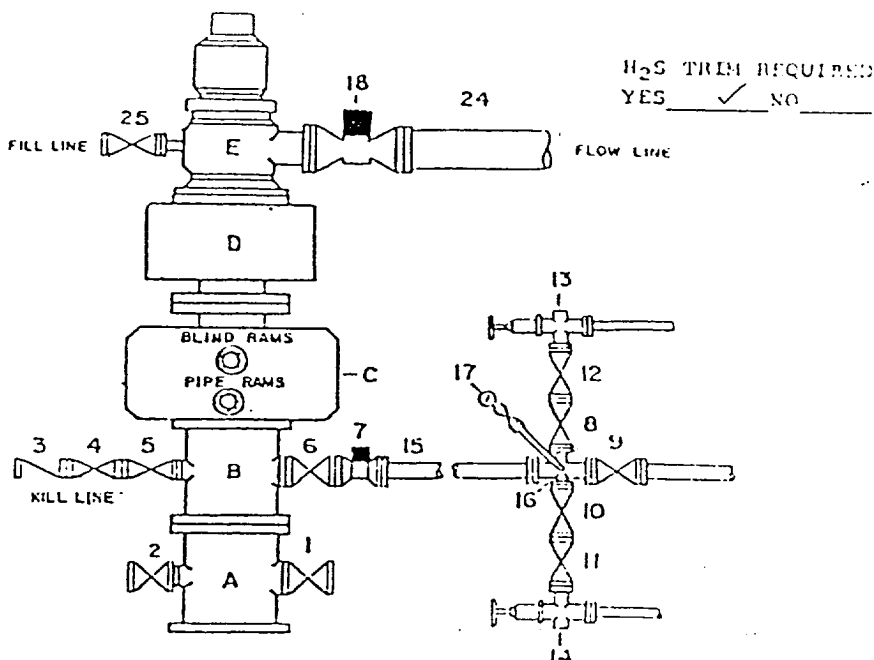
Signature & Seal of
Professional Surveyor

John S. Piper

Certificate No.

254 John S. Piper

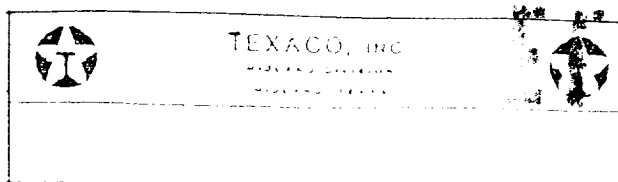
DRILLING CONTROL
CONDITION IV-B-5000 PSI WP



DRILLING CONTROL

MATERIAL LIST - CONDITION IV - B

- | | |
|----------------------|--|
| A | Texaco Wellhead |
| B | 5000# W.P. drilling spool with a minimum 2" flanged outlet for kill line and 3" minimum flanged outlet for choke line. |
| C | 5000# W.P. Dual ram type preventer, hydraulic operated with 1" steel, 5000# W.P. control lines. |
| D | 5000# W.P. Annular preventer, hydraulic operated with 1" steel, 3000# W.P. control lines. |
| E | Rotating Head with fill up outlet and extended Blosse line. |
| 1,2,4,5, 8,10,11, 12 | 2" minimum 5000# W.P. flanged full opening steel gate valve, or Halliburton Lo Torc Plug valve. |
| 1 | 2" minimum 5000# W.P. back pressure valve. |
| 6,9 | 1" minimum 5000# W.P. flanged full opening steel gate valve, or Halliburton Lo Torc Plug valve. |
| 7 | 1" minimum 5000# W.P. flanged hydraulic valve |
| 15 | 3" minimum Schedule 160, Grade B, seamless line pipe |
| 16 | 2" minimum x 3" 5000# W.P. flanged cross |
| 13,14 | 2" minimum 5000# W.P. adjustable chokes with carbide trim. |
| 17 | Cameron Mud Gauge or equivalent (location in choke line optional). |
| 18 | 6" minimum 1000# hydraulic flanged valve. |
| 24 | 8" minimum steel flow line. |
| 25 | 2" minimum 1000# W.P. flanged or threaded full opening steel gate valve, or Halliburton Lo Torc Plug valve. |



5028 2-26-92

ELF

RECEIVED

1992 MAR 2

10:00 AM