

Submit to Appropriate  
District Office  
State Lease - 6 copies  
Fee Lease - 5 copies

State of New Mexico  
Energy, Minerals and Natural Resources Department

Form C-101  
Revised 1-1-89

OIL CONSERVATION DIVISION

P.O. Box 2088  
Santa Fe, New Mexico 87504-2088

DISTRICT I  
P.O. Box 1980, Hobbs, NM 88240

DISTRICT II  
P.O. Drawer DD, Artesia, NM 88210

DISTRICT III  
1000 Rio Brazos Rd., Aztec, NM 87410

API NO. (assigned by OCD on New Wells)

30-025-31956

5. Indicate Type of Lease

STATE ☐

FEE ☒

6. State Oil & Gas Lease No.

APPLICATION FOR PERMIT TO DRILL, DEEPEN, OR PLUG BACK

1a. Type of Work:

DRILL ☒

RE-ENTER ☐

DEEPEN ☐

PLUG BACK ☐

b. Type of Well:

OIL  
WELL ☐

GAS  
WELL ☐

OTHER ☒

SINGLE  
ZONE ☒

MULTIPLE  
ZONE ☐

2. Name of Operator

TEXACO EXPLORATION AND PRODUCTION INC.

3. Address of Operator

P. O. Box 3109, Midland, Texas 79702

7. Lease Name or Unit Agreement Name

B. F. HARRISON 'B'

8. Well No.

9

9. Pool name or Wildcat

TEAGUE BLINEBRY, NORTH

4. Well Location

Unit Letter

L

:

1840

Feet From The

SOUTH

Line and

670

Feet From The

WEST

Line

Section

9

Township

23-SOUTH

Range

37-EAST

NMPM

LEA

County

10. Proposed Depth

6000'

11. Formation

BLINEBRY

12. Rotary or C.T.

ROTARY

13. Elevations (Show whether DP, RT, GR, etc.)

GR-3320'

14. Kind & Status Plug. Bond

BLANKET

15. Drilling Contractor

16. Approx. Date Work will start

MAY 12, 1993

17. PROPOSED CASING AND CEMENT PROGRAM

SIZE OF HOLE	SIZE OF CASING	WEIGHT PER FOOT	SETTING DEPTH	SACKS OF CEMENT	EST. TOP
20	16	65#	40'	REDI-MIX	SURFACE
14 3/4	11 3/4	42#	1180'	460	SURFACE
11	8 5/8	32#	3750'	1150	SURFACE
7 7/8	5 1/2	15.5# & 17#	6000'	475	SURFACE

CEMENTING PROGRAM: CONDUCTOR - READY MIX.  
SURFACE CASING: 260 SACKS CLASS C w/ 4% GEL, 2% CaCl<sub>2</sub> (13.5ppg, 1.74cf/s, 9.1gw/s). F/B 200 SACKS CLASS C w/ 2% CaCl<sub>2</sub> (14.8ppg, 1.34cf/s, 6.3gw/s).  
INTERMEDIATE CASING: 900 SACKS 50/50 POZ H w/ 2% GEL, 5% SALT (14.2ppg, 1.35cf/s, 6.3gw/s). F/B 250 SACKS CLASS H w/ 2% CaCl<sub>2</sub> (15.6ppg, 1.18cf/s, 5.2gw/s).  
PRODUCTION CASING: 275 SACKS 35/65 POZ H w/ 6% GEL, 5% SALT, 1/4# FLOCELE (12.8ppg, 1.94cf/s, 10.4gw/s). F/B 200 SACKS CLASS H (15.6ppg, 1.18cf/s, 5.2gw/s).

OXY OPERATES A WELL IN THIS QUARTER QUARTER SECTION AND HAS BEEN FURNISHED A COPY OF THIS APPLICATION.

IN ABOVE SPACE DESCRIBE PROPOSED PROGRAM: IF PROPOSAL IS TO DEEPEN OR PLUG BACK, GIVE DATA ON PRESENT PRODUCTIVE ZONE AND PROPOSED NEW PRODUCTIVE ZONE. GIVE BLOWOUT PREVENTER PROGRAM, IF ANY.

I hereby certify that the information above is true and complete to the best of my knowledge and belief.

SIGNATURE C. P. Basham / cwh TITLE DRILLING OPERATIONS MANAGER DATE 04-21-93

TYPE OR PRINT NAME C. P. BASHAM

TELEPHONE NO. 915-688-4620

(This space for State Use)

Orig. Signed by  
Paul Kautz  
Geologist

APPROVED BY

TITLE

DATE

APR 23 1993

CONDITIONS OF APPROVAL, IF ANY:

Approval Expires 6 Months From Approval  
Unless Drilling Underway.

Submit to Appropriate  
District Office  
State Lease - 4 copies  
Fee Lease - 3 copies

State of New Mexico  
Energy, Minerals and Natural Resources Department

Form C-102  
Revised 1-1-89

OIL CONSERVATION DIVISION

P.O. Box 2088

Santa Fe, New Mexico 87504-2088

DISTRICT I

P.O. Box 1980, Hobbs, NM 88240

DISTRICT II

P.O. Drawer DD, Artesia, NM 88210

DISTRICT III

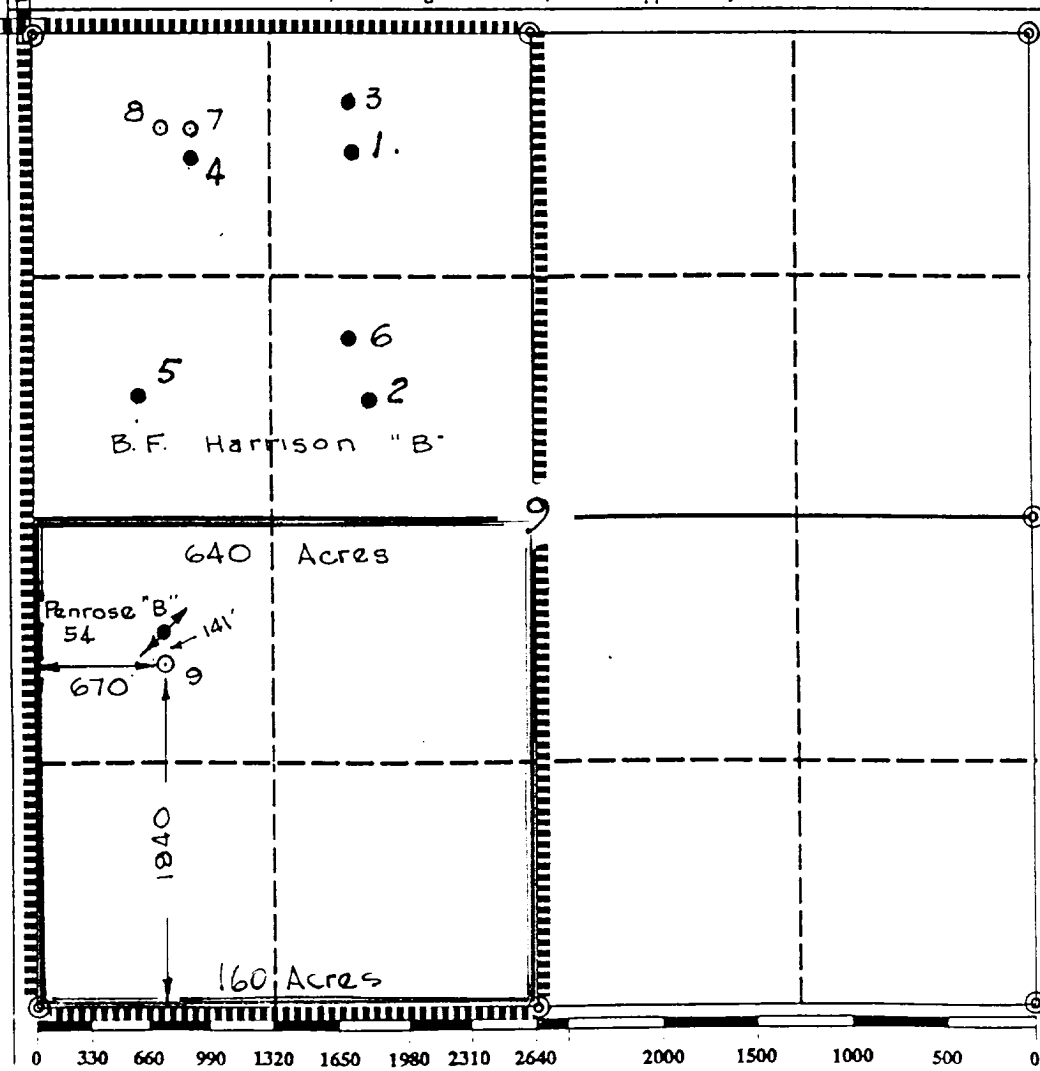
1000 Rio Brazos Rd., Aztec, NM 87410

WELL LOCATION AND ACREAGE DEDICATION PLAT

All Distances must be from the outer boundaries of the section

Operator TEXACO EXPL. & PROD. Inc.			Lease B. F. Harrison "B"		Well No. 9
Unit Letter L	Section 9	Township 23-South	Range 37-East	County NMPM	Lea
Actual Footage Location of Well: 1840 feet from the South line and 670 feet from the West line					
Ground level Elev. 3320	Producing Formation Blinebry		Pool Teague Blinebry, North		Dedicated Acreage: 160 Acres

- Outline the acreage dedicated to the subject well by colored pencil or hatchure marks on the plat below.
- If more than one lease is dedicated to the well, outline each and identify the ownership thereof (both as to working interest and royalty).
- If more than one lease of different ownership is dedicated to the well, have the interest of all owners been consolidated by communitization, unitization, force-pooling, etc.?  
☐ Yes ☐ No If answer is "yes" type of consolidation \_\_\_\_\_  
If answer is "no" list the owners and tract descriptions which have actually been consolidated. (Use reverse side of this form if necessary). \_\_\_\_\_  
No allowable will be assigned to the well until all interests have been consolidated (by communitization, unitization, forced-pooling, or otherwise) or until a non-standard unit, eliminating such interest, has been approved by the Division.



OPERATOR CERTIFICATION

I hereby certify that the information contained herein is true and complete to the best of my knowledge and belief.

Signature  
*Royce D. Mariott*  
Printed Name  
Royce D. Mariott  
Position  
Division Surveyor  
Company  
Texaco Expl. & Prod.  
Date  
April 21, 1993

SURVEYOR CERTIFICATION

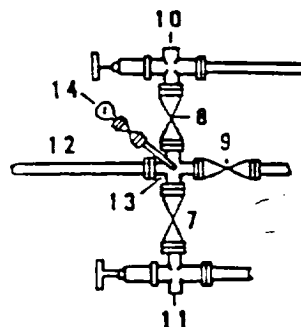
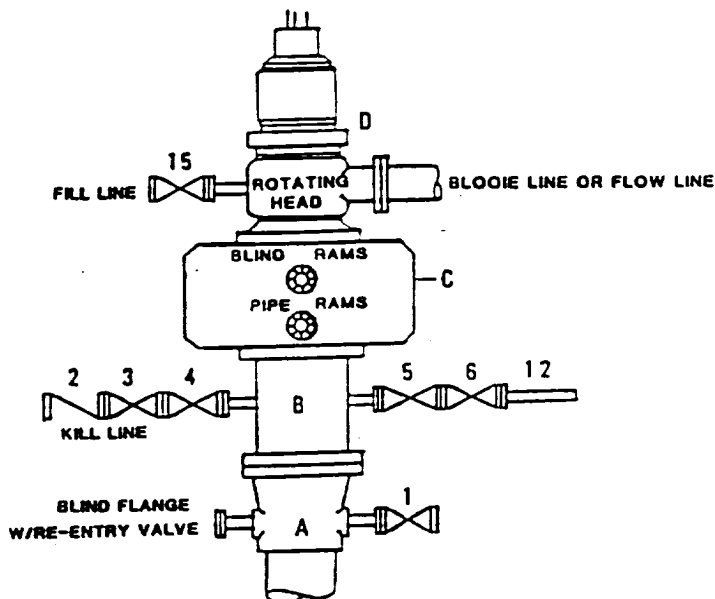
I hereby certify that the well location shown on this plat was plotted from field notes of actual surveys made by me or under my supervision, and that the same is true and correct to the best of my knowledge and belief.

Date Surveyed  
April 19, 1993  
Signature & Seal of  
Professional Surveyor

*John S. Piper*  
Certificate No. 7254  
John S. Piper

**DRILLING CONTROL  
CONDITION II-B 3000 WP  
FOR AIR DRILLING OR  
WHERE NITROGEN OR AIR BLOWS ARE EXPECTED**

H<sub>2</sub>S TRIM REQUIRED  
YES ☒ NO ☐



**DRILLING CONTROL**

**MATERIAL LIST - CONDITION II - B**

- |                |   |
|----------------|---|
| A              | Texaco Wellhead   |
| B              | 3000# W.P. drilling spool with a 2" minimum flanged outlet for kill line and 3" minimum flanged outlet for choke line.  |
| C              | 3000# W.P. Dual ram type preventer, hydraulic operated with 1" steel, 3000# W.P. control lines (where sub-structure height is adequate, 2 - 3000# W.P. single ram type preventers may be utilized). |
| D              | Rotating Head with fill up outlet and extended Bloode Line.   |
| 1,3,4,<br>7,8, | 2" minimum 3000# W.P. flanged full opening steel gate valve, or Halliburton Lo Torc Plug valve.   |
| 2              | 2" minimum 3000# W.P. back pressure valve.  |
| 5,6,9          | 3" minimum 3000# W.P. flanged full opening steel gate valve, or Halliburton Lo Torc Plug valve.   |
| 12             | 3" minimum schedule 80, Grade "B", seamless line pipe.  |
| 13             | 2" minimum x 3" minimum 3000# W.P. flanged cross.   |
| 10,11          | 2" minimum 3000# W.P. adjustable choke bodies.  |
| 14             | Cameron Mud Gauge or equivalent ( location optional in choke line).   |
| 15             | 2" minimum 3000# W.P. flanged or threaded full opening steel gate valve, or Halliburton Lo Torc Plug valve.   |



TEXACO, INC.  
HOLAND DIVISION  
HOLAND, TEXAS



SCALE	DATE	EST NO	DRG. NO

EXHIBIT C