

District I
1625 N. French Dr., Hobbs, NM 88240
District II
1301 W. Grand Avenue, Artesia, NM 88210
District III
1000 Rio Brazos Road, Aztec, NM 87410
District IV
1220 S. St. Francis Dr., Santa Fe, NM 87505

State of New Mexico
Energy Minerals and Natural Resources

Oil Conservation Division
1220 South St. Francis Dr.
Santa Fe, NM 87505

Form C-101
Revised March 17, 1999

Submit to appropriate District Office
State Lease - 6 Copies
Fee Lease - 5 Copies

☐ AMENDED REPORT

APPLICATION FOR PERMIT TO DRILL, RE-ENTER, DEEPEN, PLUGBACK, OR ADD A ZONE

¹ Operator Name and Address Rubicon Oil & Gas, LLC 400 West Illinois - Suite 1130 Midland, Texas 79701		² OGRID Number 194266
³ Property Code 30043	⁴ Property Name Newman - State	⁵ API Number 025-32021
		⁶ Well No. 1

⁷ Surface Location

UL or lot no	Section	Township	Range	Lot Idn	Feet from the	North/South line	Feet from the	East/West line	County
F	32	23-S	38-E		1874	North	1874	West	Lea

⁸ Proposed Bottom Hole Location If Different From Surface

UL or lot no	Section	Township	Range	Lot Idn	Feet from the	North/South line	Feet from the	East/West line	County
C	32	23-S	38-E		746	North	1464	West	Lea

⁹ Proposed Pool 1

Stateline Ellenburger

¹⁰ Proposed Pool 2

¹¹ Work Type Code E & D	¹² Well Type Code 0	¹³ Cable/Rotary R	¹⁴ Lease Type Code S	¹⁵ Ground Level Elevation 3296'
¹⁶ Multiple No	¹⁷ Proposed Depth 13250' MD-12030' TVD	¹⁸ Formation Ellenburger	¹⁹ Contractor Patterson Drilg. Co.	²⁰ Spud Date July 8, 2002

²¹ Proposed Casing and Cement Program

Hole Size	Casing Size	Casing weight/foot	Setting Depth	Sacks of Cement	Estimated TOC
17-1/2"	13-3/8"	48#	449'	500 sx "C"	Circulated
12-1/4"	8-5/8"	32#	3,499'	1850 sx 250 sx	Circulated
NOTE: Above casing was set by Marathon. Casing is in place, none pulled.					
7-7/8"	5-1/2"	17#	12,215'	510 sx	8000'

²² Describe the proposed program. If this application is to DEEPEN or PLUG BACK, give the data on the present production zone and proposed new productive zone.

Describe the blowout prevention program, if any. Use additional sheets if necessary. This well was drilled by Marathon Oil Co. and P&A in August 1993; surface and intermediate was left in place. We plan to re-enter this well and set 5-1/2" casing @ 12,215'. We plan to mill out a window @ 11,830' MD and drill a lateral to the bottom hole location with a TVD of 12,030'. BOP equipment will be installed and tested to 3000# before drilling any plugs. After setting 5-1/2" casing BOP equipment will be installed on the tubing head and tested to 3000#. In each case, the BOP equipment will be a 5000# double ram and a 5000# annular. H2S detection and safety equipment will be installed and operational by 1400'. PVT and flow-show will be operational by 3500'. Casing will be set and cemented as per Rule 107. BOP equipment will be installed and maintained as per Rule 109.

²³ I hereby certify that the information given above is true and complete to the best of my knowledge and belief.

Signature: *Darol K. Ramey*
Printed name: Darol K. Ramey
Title: Agent
Date: 6-24-2002
Phone: 915/687-1192

OIL CONSERVATION DIVISION

Approved by: ORIGINAL SIGNED BY
PAUL F. KAUTZ
Title: PETROLEUM ENGINEER
Approval Date: JUL 12-2002
Expiration Date:
Conditions of Approval: -
Attached ☐

DISTRICT I
P.O. Box 1880, Hobbs, NM 88241-1880

State of New Mexico
Energy, Minerals and Natural Resources Department

Form C-102
Revised February 10, 1994
Submit to Appropriate District Office
State Lease - 4 Copies
Fee Lease - 3 Copies

DISTRICT II
P.O. Drawer DD, Artesia, NM 88211-0719

OIL CONSERVATION DIVISION
P.O. Box 2088

Santa Fe, New Mexico 87504-2088

DISTRICT III
1000 Rio Brazos Rd., Aztec, NM 87410

DISTRICT IV
P.O. BOX 2088, SANTA FE, N.M. 87504-2088

WELL LOCATION AND ACREAGE DEDICATION PLAT

☐ AMENDED REPORT

API Number 30-025-32021	Pool Code 57810	Pool Name Stateline Ellenburger
Property Code 30043	Property Name NEWMAN STATE	Well Number 1
OGRID No. 194266	Operator Name RUBICON OIL AND GAS, LLC	Elevation Grd. 3296'

Surface Location

UL or lot No.	Section	Township	Range	Lot Idn	Feet from the	North/South line	Feet from the	East/West line	County
F	32	23-S	38-E		1874	NORTH	1874	WEST	LEA

Bottom Hole Location If Different From Surface

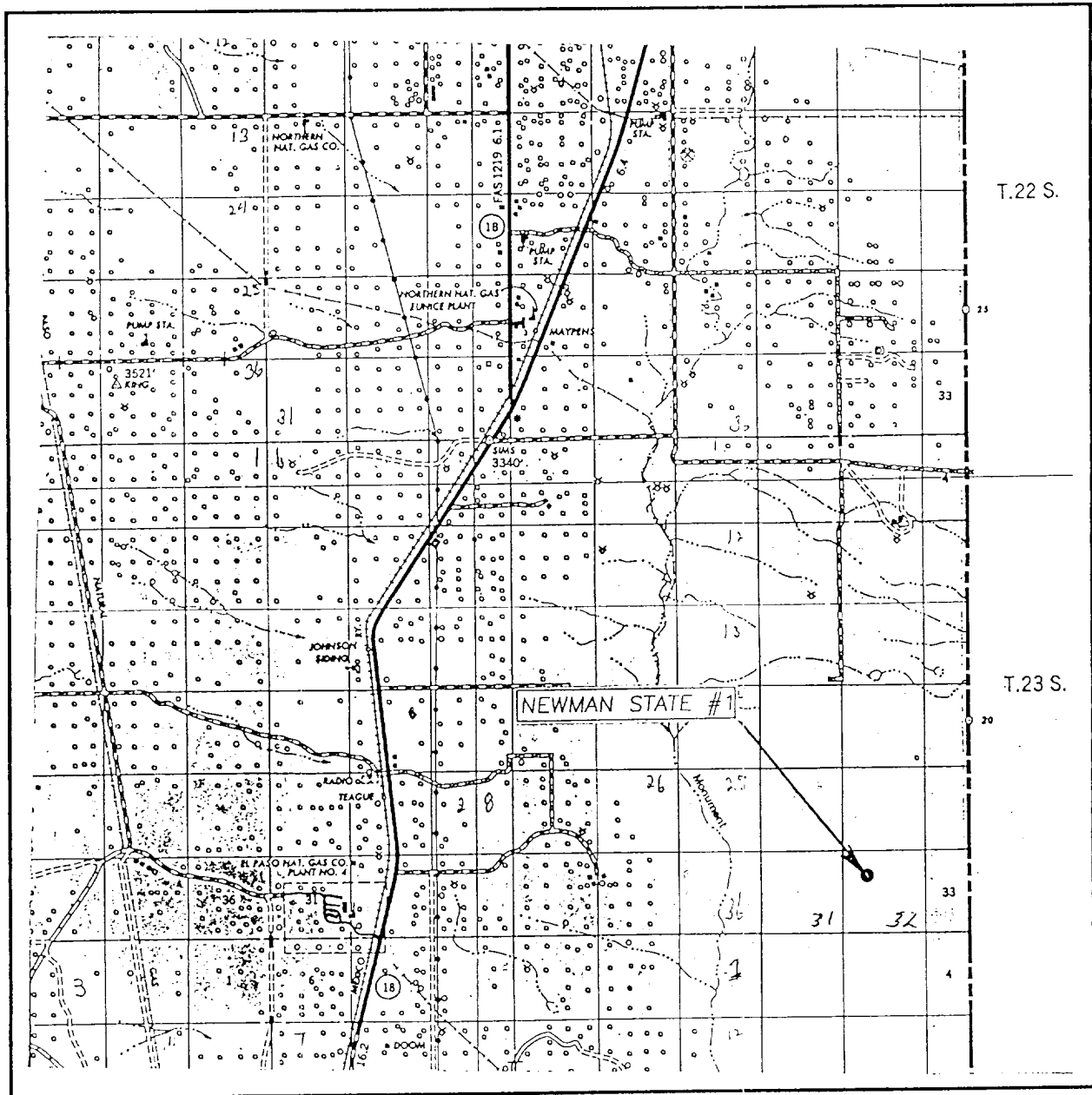
UL or lot No.	Section	Township	Range	Lot Idn	Feet from the	North/South line	Feet from the	East/West line	County
C	32	23-S	38-E		746	North	1464	West	Lea
Dedicated Acres 80	Joint or Infill	Consolidation Code	Order No.						

NO ALLOWABLE WILL BE ASSIGNED TO THIS COMPLETION UNTIL ALL INTERESTS HAVE BEEN CONSOLIDATED
OR A NON-STANDARD UNIT HAS BEEN APPROVED BY THE DIVISION

	OPERATOR CERTIFICATION I hereby certify the the information contained herein is true and complete to the best of my knowledge and belief. Signature Darol K. Ramey Printed Name Agent Title 6-24-2002 Date
	SURVEYOR CERTIFICATION I hereby certify that the well location shown on this plat was plotted from field notes of actual surveys made by me or under my supervision, and that the same is true and correct to the best of my belief. JUNE 13, 2002 Date Surveyed Signature & Seal of Professional Surveyor RONALD J. EIDSON 6/14/02 02.11.0450
	Certificate No. RUBICON 3239 GARY EIDSON 12641

See Amended

VICINITY MAP



SCALE: 1" = 2 MILES

SEC. 32 TWP. 23-S RGE. 38-E

SURVEY N.M.P.M.

COUNTY LEA

DESCRIPTION 1874' FNL & 1874' FWL

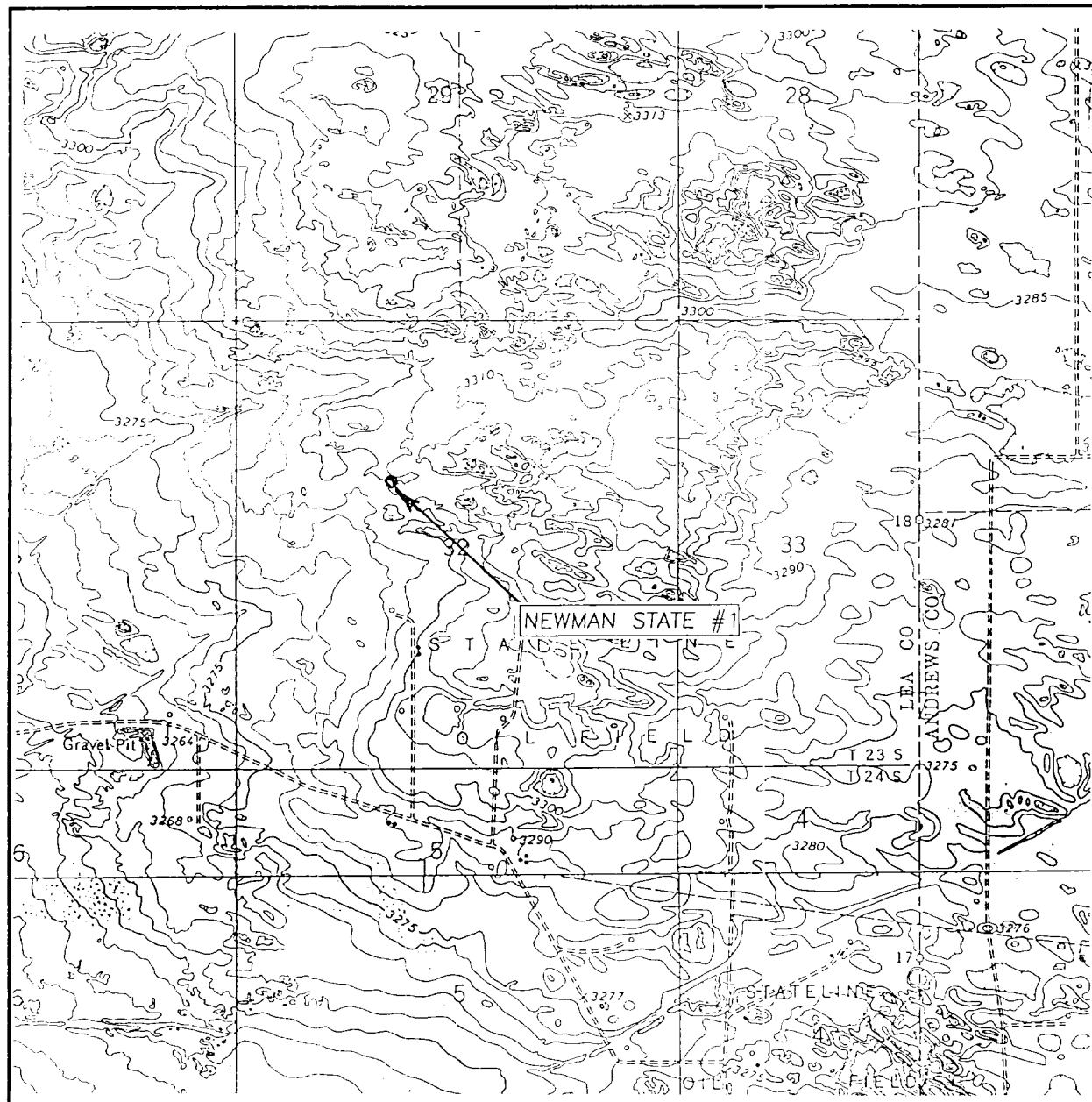
ELEVATION 3296'

OPERATOR RUBICON OIL AND GAS, LLC

LEASE NEWMAN STATE

JOHN WEST SURVEYING
HOBBS, NEW MEXICO
(505) 393-3117

LOCATION VERIFICATION MAP



SCALE: 1" = 2000'

CONTOUR INTERVAL: 5'
EUNICE, SE, N.M.

SEC. 32 TWP. 23-S RGE. 38-E

SURVEY N.M.P.M.

COUNTY LEA

DESCRIPTION 1874' FNL & 1874' FWL

ELEVATION 3296'

OPERATOR RUBICON OIL AND GAS, LLC

LEASE NEWMAN STATE

U.S.G.S. TOPOGRAPHIC MAP

EUNICE, SE, N.M.

JOHN WEST SURVEYING
HOBBS, NEW MEXICO
(505) 393-3117

DISTRICT I
P.O. Box 1080, Hobbs, NM 88241-1080

DISTRICT II
P.O. Drawer DD, Artesia, NM 88211-0719

DISTRICT III
1000 Rio Brazos Rd., Aztec, NM 87410

DISTRICT IV
P.O. BOX 2088, SANTA FE, N.M. 87504-2088

State of New Mexico
Energy, Minerals and Natural Resources Department

OIL CONSERVATION DIVISION
P.O. Box 2088
Santa Fe, New Mexico 87504-2088

Form C-102
Revised February 10, 1994
Submit to Appropriate District Office
State Lease - 4 Copies
Fee Lease - 3 Copies

WELL LOCATION AND ACREAGE DEDICATION PLAT

☒ AMENDED REPORT

API Number 30-025-32021	Pool Code 57810	Pool Name Stateline Ellenburger
Property Code 30043	Property Name NEWMAN STATE	Well Number 1
OGRID No. 194266	Operator Name RUBICON OIL AND GAS, LLC	Elevation Grd. 3296'

Surface Location

UL or lot No.	Section	Township	Range	Lot Idn	Feet from the	North/South line	Feet from the	East/West line	County
F	32	23-S	38-E		1874	NORTH	1874	WEST	LEA

Bottom Hole Location If Different From Surface

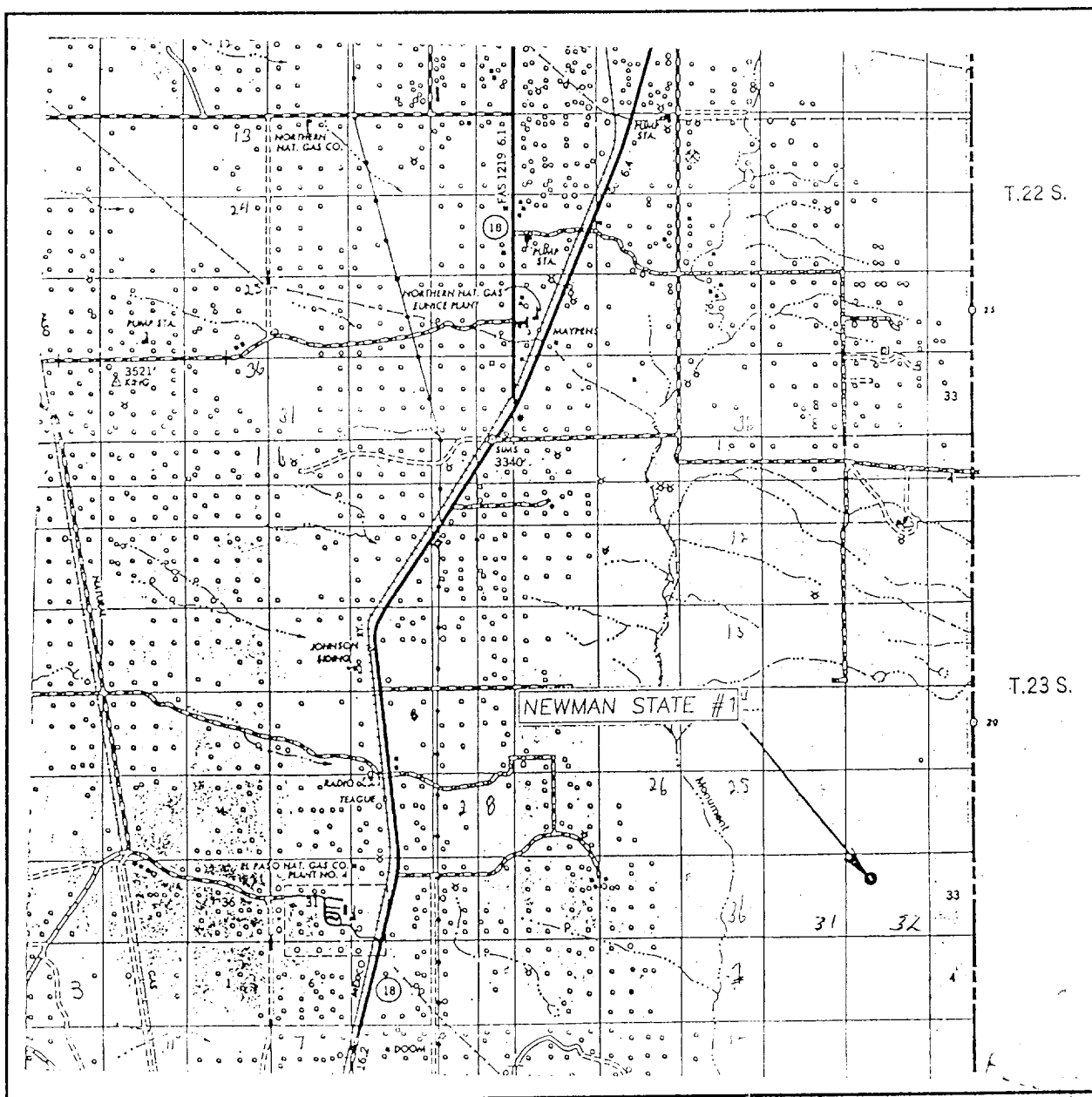
UL or lot No.	Section	Township	Range	Lot Idn	Feet from the	North/South line	Feet from the	East/West line	County
C	32	23-S	38-E		746	NORTH	1464	WEST	LEA
Dedicated Acres 160	Joint or Infill	Consolidation Code	Order No.						

NO ALLOWABLE WILL BE ASSIGNED TO THIS COMPLETION UNTIL ALL INTERESTS HAVE BEEN CONSOLIDATED
OR A NON-STANDARD UNIT HAS BEEN APPROVED BY THE DIVISION

<p>Diagram showing well location (PBHL) and surface location on a grid. Dimensions: 1464' (horizontal), 1874' (vertical), 746' (diagonal). The well location is marked with a star and labeled 'PBHL'. The surface location is marked with a circle and labeled 'Surface location'. The grid is labeled with 'RUBICON' and 'WILBANKS'.</p>	<p>OPERATOR CERTIFICATION</p> <p>I hereby certify the the information contained herein is true and complete to the best of my knowledge and belief.</p> <p><i>[Signature]</i> Signature Darol K. Ramey Printed Name Agent Title June 28, 2002 Date</p> <p>SURVEYOR CERTIFICATION</p> <p>I hereby certify that the well location shown on this plat was plotted from field notes of actual surveys made by me or under my supervision, and that the same is true and correct to the best of my belief.</p> <p>JUNE 13, 2002 Date Surveyed A.W.B. Signature & Seal of Professional Surveyor <i>[Signature]</i> Certificate No. RONALD J. EIDSON 3239 GARY EIDSON 12641</p>
--	--

AMENDED

VICINITY MAP



SCALE: 1" = 2 MILES

SEC. 32 TWP. 23-S RGE. 38-E

SURVEY N.M.P.M.

COUNTY LEA

DESCRIPTION 1874' FNL & 1874' FWL

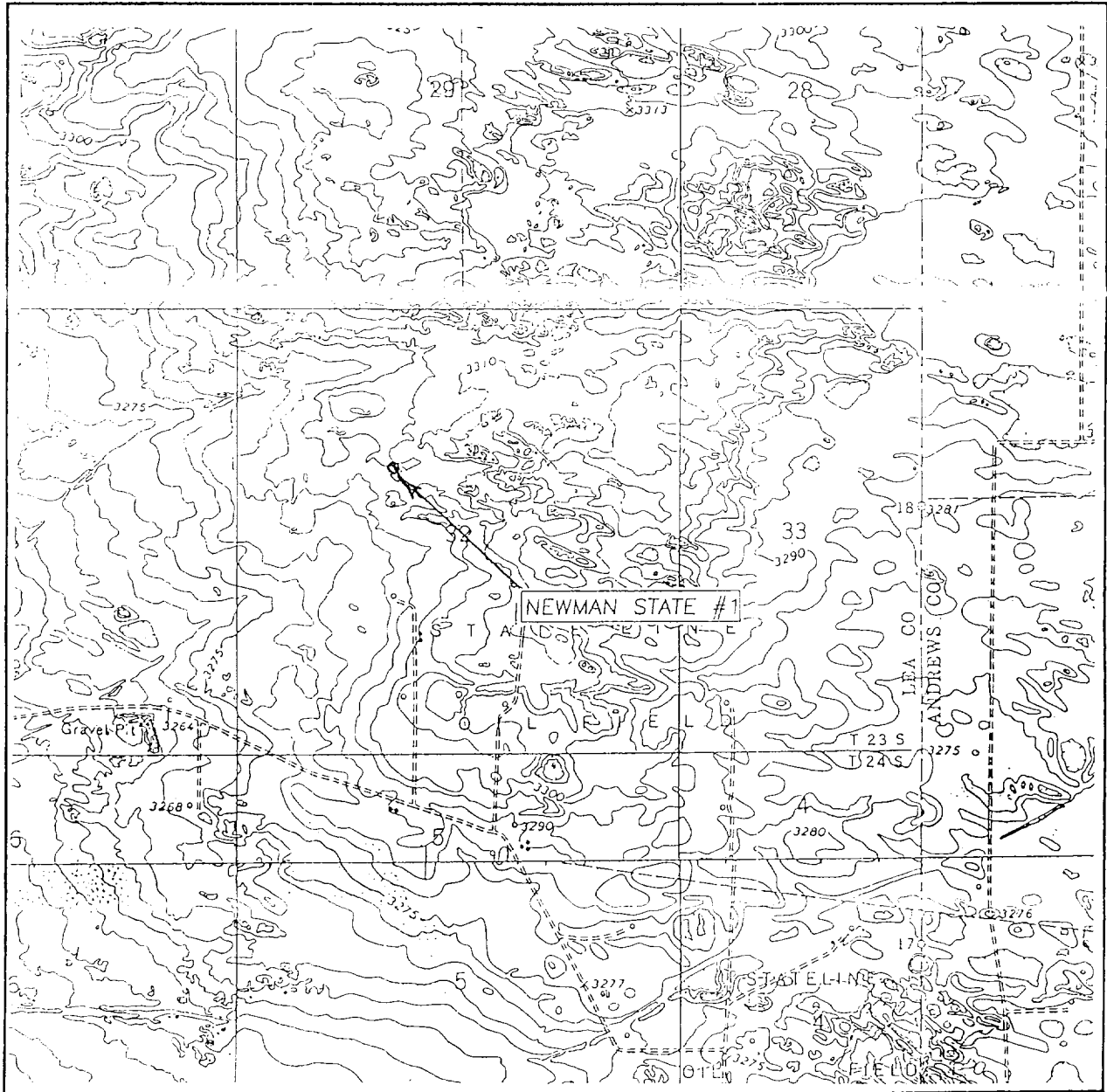
ELEVATION 3296'

OPERATOR RUBICON OIL AND GAS, LLC

LEASE NEWMAN STATE

JOHN WEST SURVEYING
HOBBS, NEW MEXICO
(505) 393-3117

LOCATION VERIFICATION MAP



SCALE: 1" = 2000'

CONTOUR INTERVAL: 5'
EUNICE, SE, N.M.

SEC. 32 TWP. 23-S RGE. 38-E

SURVEY N.M.P.M.

COUNTY LEA

DESCRIPTION 1874' FNL & 1874' FWL

ELEVATION 3296'

OPERATOR RUBICON OIL AND GAS, LLC

LEASE NEWMAN STATE

U.S.G.S. TOPOGRAPHIC MAP
EUNICE, SE, N.M.

JOHN WEST SURVEYING
HOBBS, NEW MEXICO
(505) 393-3117