

**C&L CONSERVATION DIVISION**

P.O. Box 2088

Santa Fe, New Mexico 87504-2088

**DISTRICT I**  
P.O. Box 1980, Hobbs, NM 88240

**DISTRICT II**  
P.O. Drawer DD, Artesia, NM 88210

**DISTRICT III**  
1000 Rio Brazos Rd., Aztec, NM 87410

**WELL LOCATION AND ACREAGE DEDICATION PLAT**

All Distances must be from the outer boundaries of the section

Operator <b>TEXACO EXPLORATION AND PRODUCTION Inc.</b>			Lease <b>RHODES NCT COOP FED. COM-1</b>		Well No. <b>2</b>
Unit Letter <b>G</b>	Section <b>27</b>	Township <b>26-South</b>	Range <b>37-East</b>	County <b>Lea</b>	
Actual Footage Location of Well: 2310 feet from the North line and 2310 feet from the East line					
Ground level Elev. <b>2977</b>	Producing Formation <b>Yates/7 RVRs</b>		Pool <b>Rhodes Yates Seven Rivers</b>		Dedicated Acreage: <b>40</b> Acres

1. Outline the acreage dedicated to the subject well by colored pencil or hatchure marks on the plat below.

2. If more than one lease is dedicated to the well, outline each and identify the ownership thereof (both as to working interest and royalty).

3. If more than one lease of different ownership is dedicated to the well, have the interest of all owners been consolidated by communization, unitization, force-pooling, etc.?

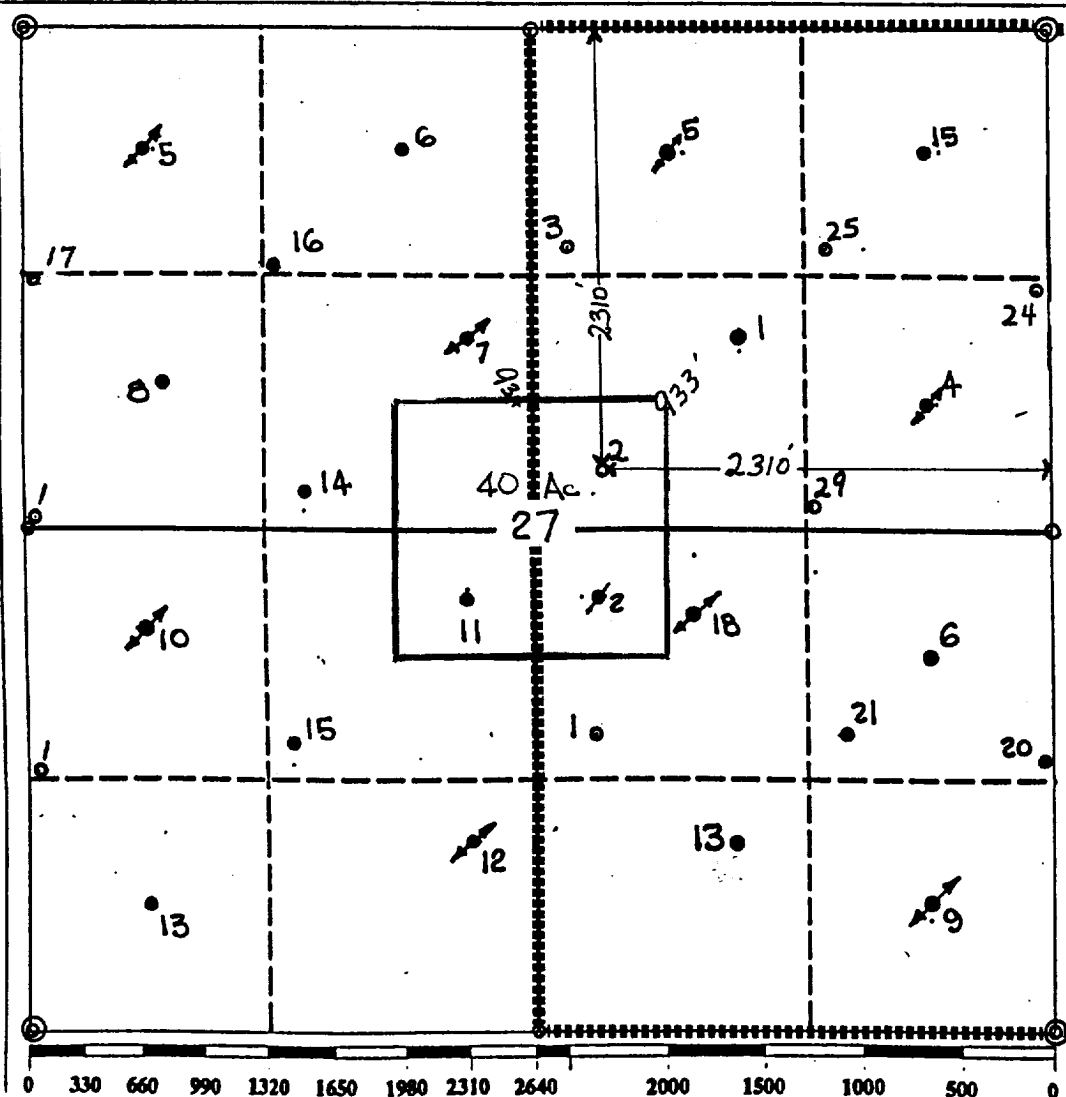
☒ Yes

☐ No

If answer is "yes" type of consolidation Communization

If answer is "no" list the owners and tract descriptions which have actually been consolidated. (Use reverse side of this form if necessary.)

No allowable will be assigned to the well until all interests have been consolidated (by communization, unitization, forced-pooling, or otherwise) or until a non-standard unit, eliminating such interest, has been approved by the Division.



**OPERATOR CERTIFICATION**

I hereby certify that the information contained herein is true and complete to the best of my knowledge and belief.

Signature

*Royce D. Mariott*

Printed Name

Royce D. Mariott

Position

Division Surveyor

Company

Texaco Expl. & Prod. Inc.

Date

October 4, 1993

**SURVEYOR CERTIFICATION**

I hereby certify that the well location shown on this plat was plotted from field notes of actual surveys made by me or under my supervision, and that the same is true and correct to the best of my knowledge and belief.

Date Surveyed

May 17, 1993

Signature & Seal of  
Professional Surveyor

*John S. Piper*

Certificate No.

7254

John S. Piper

Sheet 8 of 8