

DISTRICT I  
P O Box 1980, Hobbs, NM 88241-1980  
DISTRICT II  
P O Box Drawer DD Artesia, NM 88211-0719  
DISTRICT III  
1000 Rio Brazos Rd., Aztec, NM 87410  
DISTRICT IV  
P O Box 2088, Santa Fe, NM 87504-2088

State of New Mexico  
Energy, Minerals and Natural Resources Department

Form C-10  
Revised February 10, 1999  
Instructions on back  
Submit to Appropriate District Office  
State Lease - 6 Copies  
Fee Lease - 5 Copies  
AMENDED REPORT

## OIL CONSERVATION DIVISION

P.O. Box 2088  
Santa Fe, New Mexico 87504-2088

### APPLICATION FOR PERMIT TO DRILL, RE-ENTER, DEEPEN, PLUGBACK, OR ADD A ZONE

<sup>1</sup> Operator Name and Address TEXACO EXPLORATION & PRODUCTION INC. 205 E. Bender, HOBBS, NM 88240		<sup>2</sup> OGRID Number 022351
<sup>4</sup> Property Code 10960	<sup>5</sup> Property Name HARRISON, B. F. - B -	<sup>3</sup> API Number 3002532106
		<sup>6</sup> Well No. 10

#### <sup>7</sup> Surface Location

UI or lot no	Section	Township	Range	Lot Idn	Feet From The	North/South Line	Feet From The	East/West Line	County
E	9	23-S	37-E		1780	N	660	WEST	LEA

#### <sup>8</sup> Proposed Bottom Hole Location If Different From Surface

UI or lot no	Section	Township	Range	Lot Idn	Feet From The	North/South Line	Feet From The	East/West Line	County
D	9	23S	37E		330	NORTH	330	WEST	LEA

#### <sup>9</sup> Proposed Pool 1

TEAGUE, ~~337~~ GLORIETA UPPER PADDOCK

#### <sup>10</sup> Proposed Pool 2

<sup>11</sup> Work Type Code P	<sup>12</sup> Well Type Code O	<sup>13</sup> Rotary or C.T. P	<sup>14</sup> Lease Type Code P	<sup>15</sup> Ground Level Elevation GR-3317', KB-3330'
<sup>16</sup> Multiple No	<sup>17</sup> Proposed Depth 5110'	<sup>18</sup> Formation GLORIETA	<sup>19</sup> Contractor	<sup>20</sup> Spud Date 8/15/00

#### <sup>21</sup> Proposed Casing and Cement Program

SIZE OF HOLE	SIZE OF CASING	WEIGHT PER FOOT	SETTING DEPTH	SACKS OF CEMENT	EST. TOP
12 1/4	8 5/8	24#	1180'	CL-C 650 SX CIRC. 75	
7 7/8	5 1/2	15 5#	5448'	CL-H 1325 SX CIRC. 1	

<sup>22</sup> Describe the proposed program. If this application is to DEEPEN or PLUG BACK give the data on the present productive zone and proposed new productive zone.  
Describe the blowout prevention program, if any. Use additional sheets if necessary.

TEXACO INTENDS TO DRILL A HORIZONTAL RE-ENTRY FOR THE PURPOSE OF TAPPING ADDITIONAL GLORIETA-UPPER PADDOCK PAY FROM AN EXISTING WELLBORE.

Permit Expires \_\_\_\_\_  
Date Unless Drilling Underway

*Plug-Back*

<sup>23</sup> I hereby certify that the rules and regulations of the Oil Conservation Division have been complied with and that the information given above is true and complete to the best of my knowledge and belief.

Signature

*J. Denise Leake*

Printed Name J. Denise Leake

Title Engineering Assistant

Date 7/25/00

Telephone 397-0405

## OIL CONSERVATION DIVISION

Approved By:

Title:

Approval Date:

Expiration Date:

Conditions of Approval

Attached

## DISTRICT I

P.O. Box 1980, Hobbs, NM 88241-1980

## DISTRICT II

P.O. Box Drawer DD, Artesia, NM 88211-0719

## DISTRICT III

1000 Rio Brazos Rd., Aztec, NM 87410

## DISTRICT IV

P.O. Box 2088, Santa Fe, NM 87504-2088

State of New Mexico

Energy, Minerals and Natural Resources Department

Form C-10

Revised February 10, 1999

Instructions on back

Submit to Appropriate District Office

State Lease - 4 Copies

Fee Lease - 3 Copies

AMENDED REPORT

## OIL CONSERVATION DIVISION

P.O. Box 2088

Santa Fe, New Mexico 87504-2088

## WELL LOCATION AND ACREAGE DEDICATION PLAT

1 API Number 3002532106	2 Pool Code 58595	3 Pool Name TEAGUE GLORIETA-UPPER PADDOCK, SOUTHWEST
4 Property Code 10960	5 Property Name HARRISON, B. F. - B -	6 Well No. 10
7 OGRID Number 022351	8 Operator Name TEXACO EXPLORATION & PRODUCTION INC.	9 Elevation GR-3317' KB-3330'

## 10 Surface Location

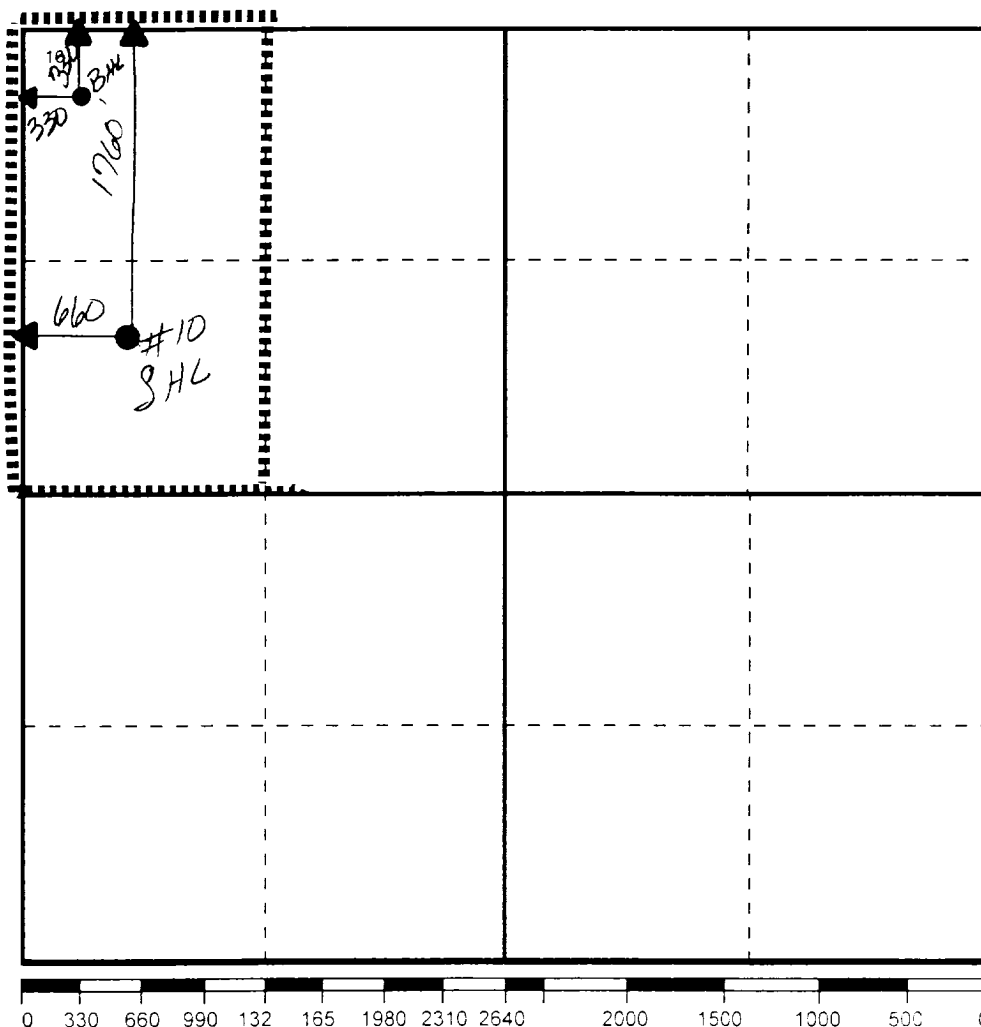
UI or lot no	Section	Township	Range	Lot Idn	Feet From The	North/South Line	Feet From The	East/West Line	County
E	9	23-S	37-E		1780	N	660	WEST	LEA

## 11 Bottom Hole Location If Different From Surface

UI or lot no	Section	Township	Range	Lot Idn	Feet From The	North/South Line	Feet From The	East/West Line	County
D	9	23S	37E		330	NORTH	330	WEST	LEA

12 Dedicated Acre 80	13 Joint or Infill No	14 Consolidation Code	15 Order No.
-------------------------	--------------------------	-----------------------	--------------

NO ALLOWABLE WILL BE ASSIGNED TO THIS COMPLETION UNTIL ALL INTERESTS HAVE BEEN CONSOLIDATED  
OR A NON-STANDARD UNIT HAS BEEN APPROVED BY THE DIVISION



## 17 OPERATOR CERTIFICATION

I hereby certify that the information contained herein is true and complete to the best of my knowledge and belief.

Signature

Printed Name

J. Denise Leake

Position

Engineering Assistant

Date

7/25/00

## 18 SURVEYOR CERTIFICATION

I hereby certify that the well location shown on this plat was plotted from field notes of actual surveys made by me or under my supervision, and that the same is true and correct to the best of my knowledge and belief.

Date Surveyed

Signature &amp; Seal of

Professional Surveyor

Certificate No.