

OIL CONSERVATION DIVISION

P.O. Box 2088

Santa Fe, New Mexico 87504-2088

DISTRICT I
P.O. Box 1980, Hobbs, NM 88240

DISTRICT II
P.O. Drawer DD, Artesia, NM 88210

DISTRICT III
1000 Rio Brazos Rd., Aztec, NM 87410

WELL LOCATION AND ACREAGE DEDICATION PLAT

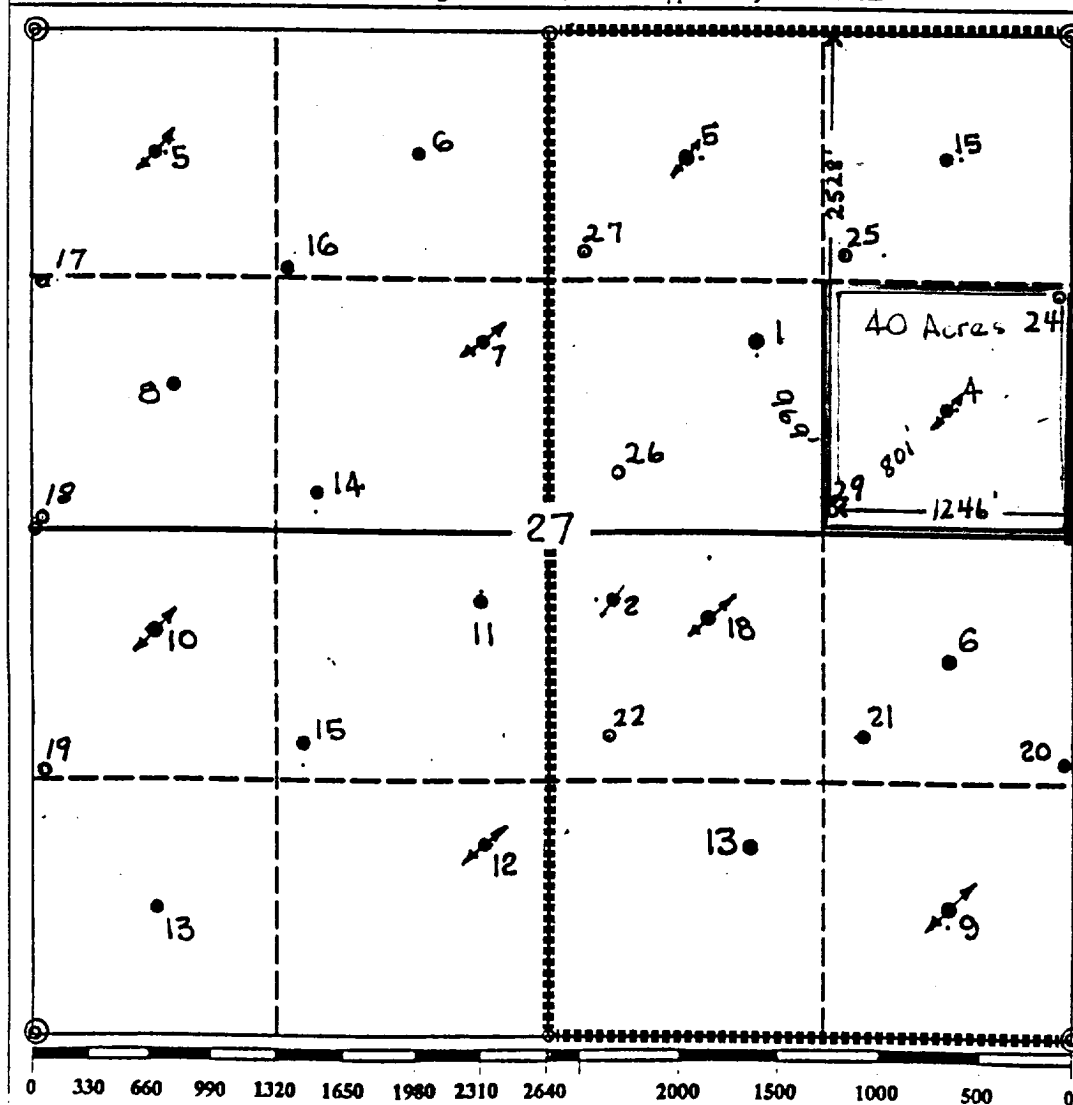
All Distances must be from the outer boundaries of the section

Operator TEXACO EXPLORATION AND PRODUCTION Inc.			Lease W.H. Rhodes Federal "B" NCT-1		Well No. 29
Unit Letter H	Section 27	Township 26-South	Range 37-East	County Lea	
Actual Footage Location of Well: 2528 feet from the North line and 1246 feet from the East line					
Ground level Elev. 2980	Producing Formation Yates/7 RVRS		Pool Rhodes Yates Seven Rivers		Dedicated Acreage: 40 Acres

- Outline the acreage dedicated to the subject well by colored pencil or hatchure marks on the plat below.
- If more than one lease is dedicated to the well, outline each and identify the ownership thereof (both as to working interest and royalty).
- If more than one lease of different ownership is dedicated to the well, have the interest of all owners been consolidated by communitization, unitization, force-pooling, etc.?
☐ Yes ☐ No If answer is "yes" type of consolidation _____

If answer is "no" list the owners and tract descriptions which have actually been consolidated. (Use reverse side of this form if necessary.)

No allowable will be assigned to the well until all interests have been consolidated (by communitization, unitization, forced-pooling, or otherwise) or until a non-standard unit, eliminating such interest, has been approved by the Division.



OPERATOR CERTIFICATION

I hereby certify that the information contained herein is true and complete to the best of my knowledge and belief.

Signature

Royce D. Mariott

Printed Name

Royce D. Mariott

Position

Division Surveyor

Company

Texaco Expl. & Prod. Inc.

Date

May 24, 1993

SURVEYOR CERTIFICATION

I hereby certify that the well location shown on this plat was plotted from field notes of actual surveys made by me or under my supervision, and that the same is true and correct to the best of my knowledge and belief.

Date Surveyed

May 17, 1993

Signature & Seal of
Professional Surveyor

John S. Piper

Certificate No.

7254 John S. Piper

Sheet of

NSL-3264

RECEIVED

JUL 09 1993

DOUGHERTY
JUL 09 1993