

Submit to Appropriate
District Office
State Lease - 6 copies
Fee Lease - 5 copies

State of New Mexico
Energy, Minerals and Natural Resources Department

Form C-101
Revised 1-1-89

OIL CONSERVATION DIVISION

P.O. Box 2088
Santa Fe, New Mexico 87504-2088

DISTRICT I
P.O. Box 1980, Hobbs, NM 88240

DISTRICT II
P.O. Drawer DD, Artesia, NM 88210

DISTRICT III
1000 Rio Brazos Rd., Aztec, NM 87410

API NO. (assigned by OCD on New Wells)

3D-025-32113

5. Indicate Type of Lease

STATE ☐

FEE ☒

6. State Oil & Gas Lease No.

APPLICATION FOR PERMIT TO DRILL, DEEPEN, OR PLUG BACK

1a. Type of Work:

DRILL ☒

RE-ENTER ☐

DEEPEN ☐

PLUG BACK ☐

b. Type of Well:

OIL
WELL ☒

GAS
WELL ☐

OTHER

SINGLE
ZONE ☐

MULTIPLE
ZONE ☐

7. Lease Name or Unit Agreement Name

Skelly Penrose B Unit

2. Name of Operator

OXY USA Inc.

8. Well No.

72

3. Address of Operator

P.O. Box 50250 Midland, TX. 79710

9. Pool name or Wildcat

Langlie Mattix 7 RVR Qn-GB

4. Well Location

Unit Letter B : 1220 Feet From The North Line and 1370 Feet From The East Line

Section 5 Township 23S Range 37E NMPM Lea County

10. Proposed Depth

3900'

11. Formation

Queen

12. Rotary or C.T.

Rotary

13. Elevations (Show whether DF, RT, GR, etc.)

3356.6'

14. Kind & Status Plug Bond

Required/Approved

15. Drilling Contractor

Unknown

16. Approx. Date Work will start

ASAP

17. PROPOSED CASING AND CEMENT PROGRAM

SIZE OF HOLE	SIZE OF CASING	WEIGHT PER FOOT	SETTING DEPTH	SACKS OF CEMENT	EST. TOP
12 1/4"	8 5/8"	24#	400'	260	Circulated
7 7/8"	5 1/2"	15.5#	3900'	810	Circulated

It is proposed to Drill to a TD of 3900'.

See other side.

Approved to drill ONLY--Well cannot be produced until Non-standard location is approved.

IN ABOVE SPACE DESCRIBE PROPOSED PROGRAM: IF PROPOSAL IS TO DEEPEN OR PLUG BACK, GIVE DATA ON PRESENT PRODUCTIVE ZONE AND PROPOSED NEW PRODUCTIVE ZONE. GIVE BLOWOUT PREVENTER PROGRAM, IF ANY.

I hereby certify that the information above is true and complete to the best of my knowledge and belief.

SIGNATURE C.W. Pollard TITLE Oper. Engr. Supr. DATE 7/12/93

TYPE OR PRINT NAME C.W. Pollard (Prepared by David Stewart) TELEPHONE NO. 9156855717

(This space for State Use)

APPROVED BY Paul Kautz TITLE Geologist DATE JUL 29 1993

CONDITIONS OF APPROVAL, IF ANY:

Permit Expires 6 Months From Approval
Date Unless Drilling Underway.

Bit Program:	12-1/4" hole to 400' 7-7/8" hole to 4500'	
BOP Program:	0 - 400'	None
	400' - TD	3000# WP pipe and blind rams w/ 3000# WP annular preventer and choke manifold
Mud Program:	0 - 400'	Drill w/a gel/lime slurry. Use paper to control seepage and for sweeps.
	400' - 3500'	Drill with 10# brine water. Circulate through the reserve pit to control solids. Use paper to control seepage and for sweeps.
	3500' - TD	Raise viscosity to 32-34 secs with salt gel. Reduce waterloss to < 15 cc's. Keep pH < 10.
Logging Program:	TD - 2000'	GR-DLL-MSFL-caliper
		GR-CNL-lithodensity
	TD - 3950'	GR-FMS
Casing Program:	Surface	0 - 400' 8-5/8" 24# K55 STC
	Production	0 - TD 5-1/2" 15.5# K55 STC (roughcoat 500')
Cement program	Surface	Lead 260 sx Cl C + 2% CaCl ₂ + 1/4 pps cellophane flakes
	Production	Lead 660 sx Premium Plus w/15 pps salt + 1/4 pps cellophane flakes
		Tail 150 sx 50/50 Poz/Cl C + 2% gel + 3 pps KCl + .3% Halad- 9
		Calculate annular volume from caliper log and adjust volumes if necessary.
Wellhead	8-5/8" 3000# WP Larken "Unistack" casing head 5-1/2" x 2-7/8" 3000# WP Larken "Unistack" tubing head	
H ₂ S safety	While drilling below 3900', protective breathing equipment at 2 sites, wind direction indicator, and automatic H ₂ S detection and alarm equipment shall be on location. All contractor and company personnel shall be trained in H ₂ S safety in accordance with TRC Rule 36.	

RECEIVED

APR 19 1993

Submit to Appropriate
District Office
State Lease - 4 copies
Fee Lease - 3 copies

State of New Mexico
Energy, Minerals and Natural Resources Department

Form C-102
Revised 1-1-89

OIL CONSERVATION DIVISION

P.O. Box 2088
Santa Fe, New Mexico 87504-2088

DISTRICT I

P.O. Box 1980, Hobbs, NM 88240

DISTRICT II

P.O. Drawer DD, Artesia, NM 88210

DISTRICT III

1000 Rio Brazos Rd., Aztec, NM 87410

WELL LOCATION AND ACREAGE DEDICATION PLAT

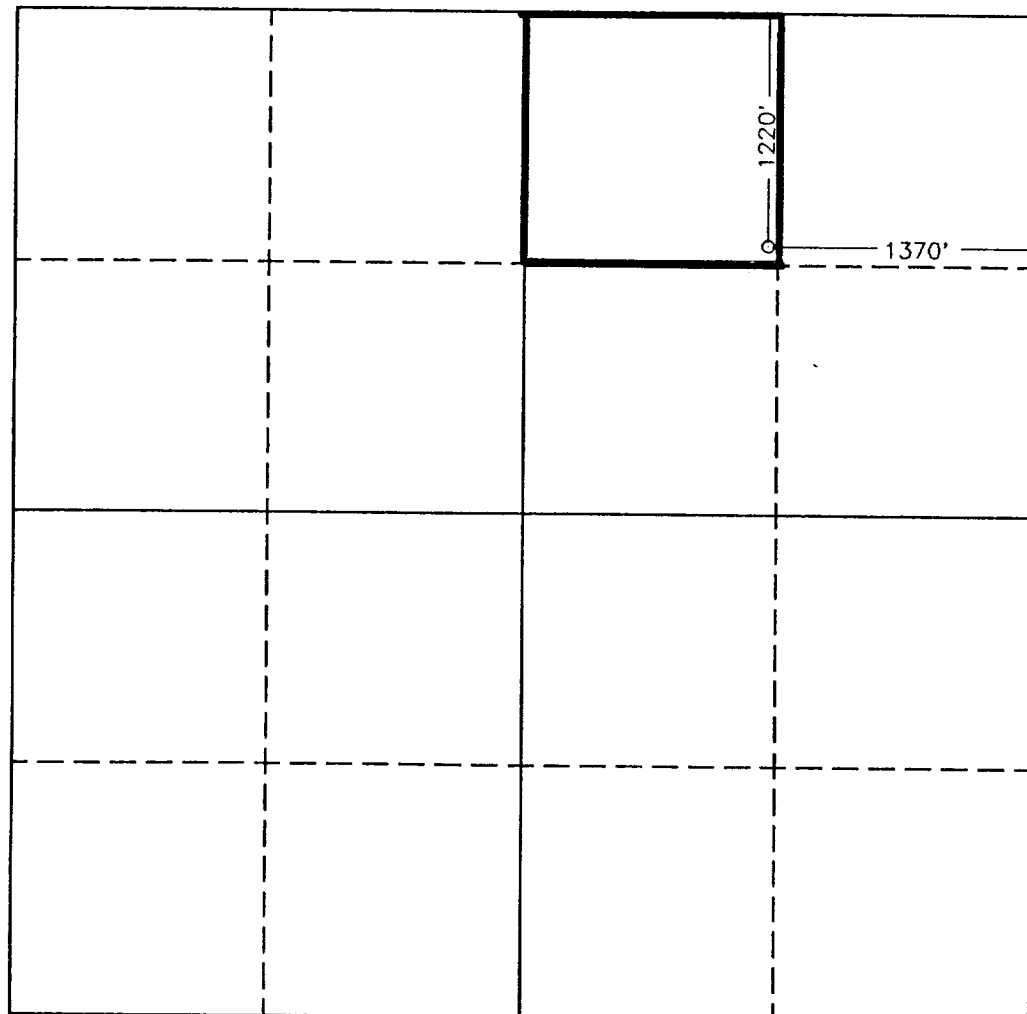
All Distances must be from the outer boundaries of the section

Operator OXY U.S.A. INC.		Lease <i>Skelly</i> PENROSE "B" Unit		Well No. 72
Unit Letter B	Section 5	Township 23 SOUTH	Range 37 EAST NMPM	County LEA
Actual Footage Location of Well: 1220 feet from the NORTH line and 1370 feet from the EAST line				
Ground Level Elev. 3356.6	Producing Formation Svn Rvr - On - GB	Pool Langlie Mattix	Dedicated Acreage: <i>44.08</i> 40 Acres	

- Outline the acreage dedicated to the subject well by colored pencil or hatchure marks on the plat below.
- If more than one lease is dedicated to the well, outline each and identify the ownership thereof (both as to working interest and royalty).
- If more than one lease of different ownership is dedicated to the well, have the interest of all owners been consolidated by communitization, unitization, force-pooling, etc.?
☒ Yes ☐ No If answer is "yes" type of consolidation Unitization R-2915

If answer is "no" list of owners and tract descriptions which have actually been consolidated. (Use reverse side of this form necessary.)

No allowable will be assigned to the well unit all interests have been consolidated (by communitization, unitization, forced-pooling, otherwise) or until a non-standard unit, eliminating such interest, has been approved by the Division.



OPERATOR CERTIFICATION

I hereby certify the the information contained herein is true and complete to the best of my knowledge and belief.

Signature
C.W. Pollard

Printed Name
C.W. Pollard

Position
Oper. Engr. Supr.

Company
OXY USA Inc.

Date
7/12/93

SURVEYOR CERTIFICATION

I hereby certify that the well location shown on this plat was plotted from field notes of actual surveys made by me or under my supervision, and that the same is true and correct to the best of my knowledge and belief.

Date Surveyed
MAY 15, 1993

Signature
[Signature]
Professional Seal

Certification No. *7977*
JOHN H. WEST, 676
EDSON, 3238
GARY L. JONES, 7977

93-11-0841

12
13
14
15
16
17
18
19
20
21
22
23
24
25
26
27
28
29
30
31
32
33
34
35
36
37
38
39
40
41
42
43
44
45
46
47
48
49
50
51
52
53
54
55
56
57
58
59
60
61
62
63
64
65
66
67
68
69
70
71
72
73
74
75
76
77
78
79
80
81
82
83
84
85
86
87
88
89
90
91
92
93
94
95
96
97
98
99
100

RECEIVED

JUL 13 1993

JOE HOBBS
OFFICE