

Submit to Appropriate
District Office
State Lease -- 6 copies
Fee Lease -- 5 copies

State of New Mexico
Energy, Minerals and Natural Resources Department

Form C-101
Revised 1-1-89

OIL CONSERVATION DIVISION
P.O. Box 2088
Santa Fe, New Mexico 87504-2088

DISTRICT I
P.O. Box 1980, Hobbs, NM 88240

DISTRICT II
P.O. Drawer DD, Artesia, NM 88210

DISTRICT III
1000 Rio Brazos Rd., Aztec, NM 87410

API NO. (assigned by OCD on New Wells)

30-025-32159

5. Indicate Type of Lease

STATE ☐

FEE ☒

6. State Oil & Gas Lease No.

APPLICATION FOR PERMIT TO DRILL, DEEPEN, OR PLUG BACK

1a. Type of Work:

DRILL ☒

RE-ENTER ☐

DEEPEN ☐

PLUG BACK ☐

b. Type of Well:

OIL
WELL ☒

GAS
WELL ☐

OTHER WILDCAT ☐

SINGLE
ZONE ☒

MULTIPLE
ZONE ☐

7. Lease Name or Unit Agreement Name

B. F. HARRISON 'B'

2. Name of Operator

TEXACO EXPLORATION AND PRODUCTION INC.

8. Well No.

18

3. Address of Operator

P. O. Box 3109, Midland, Texas 79702

9. Pool name or Wildcat

Wildcat
~~UNDESIGNATED (SAN ANDRES)~~

4. Well Location

Unit Letter

D

: 990

Feet From The NORTH

Line and

660

Feet From The WEST

Line

Section

9

Township 23-SOUTH

Range 37-EAST

NMPM

LEA

County

10. Proposed Depth

5000'

11. Formation

SAN ANDRES

12. Rotary or C.T.

ROTARY

13. Elevations (Show whether DF, RT, GR, etc.)

GR-3319'

14. Kind & Status Plug. Bond

BLANKET

15. Drilling Contractor

16. Approx. Date Work will start

AUGUST 20, 1993

17. PROPOSED CASING AND CEMENT PROGRAM

SIZE OF HOLE	SIZE OF CASING	WEIGHT PER FOOT	SETTING DEPTH	SACKS OF CEMENT	EST. TOP
17 1/2	13 3/8	48#	40'	REDI-MIX	SURFACE
12 1/4	8 5/8	24#	1180'	650	SURFACE
7 7/8	5 1/2	15.5# & 17#	5000'	1225	SURFACE

CEMENTING PROGRAM: CONDUCTOR - READYMIX.

SURFACE CASING: 450 SACKS CLASS C w/ 4% GEL, 2% CaCl₂ (13.5ppg, 1.74cf/s, 9.1gw/s). F/B 200 SACKS CLASS C w/ 2% CaCl₂ (14.8ppg, 1.34cf/s, 6.3gw/s).

PRODUCTION CASING: 550 SACKS 35/65 POZ H w/ 6% GEL, 5% SALT, 1/4# FLOCELE (12.8ppg, 1.94cf/s, 10.4gw/s). F/B 675 SACKS CLASS H (15.6ppg, 1.18cf/s, 5.2gw/s).

THERE ARE NO OTHER OPERATORS IN THIS QUARTER QUARTER SECTION.

IN ABOVE SPACE DESCRIBE PROPOSED PROGRAM: IF PROPOSAL IS TO DEEPEN OR PLUG BACK, GIVE DATA ON PRESENT PRODUCTIVE ZONE AND PROPOSED NEW PRODUCTIVE ZONE. GIVE BLOWOUT PREVENTER PROGRAM, IF ANY.

I hereby certify that the information above is true and complete to the best of my knowledge and belief.

SIGNATURE C. P. Basham / cwh TITLE DRILLING OPERATIONS MANAGER DATE 07-30-93

TYPE OR PRINT NAME C. P. BASHAM

TELEPHONE NO. 915-688-4620

(This space for State Use)

APPROVED BY Orig. Signed by Paul Kautz TITLE Geologist DATE AUG 03 1993
CONDITIONS OF APPROVAL, IF ANY:

Submit to Appropriate
District Office
State Lease - 4 copies
Fee Lease - 3 copies

State of New Mexico
Energy, Minerals and Natural Resources Department

Form C-102
Revised 1-1-89

OIL CONSERVATION DIVISION

P.O. Box 2088
Santa Fe, New Mexico 87504-2088

DISTRICT I
P.O. Box 1980, Hobbs, NM 88240

DISTRICT II
P.O. Drawer DD, Artesia, NM 88210

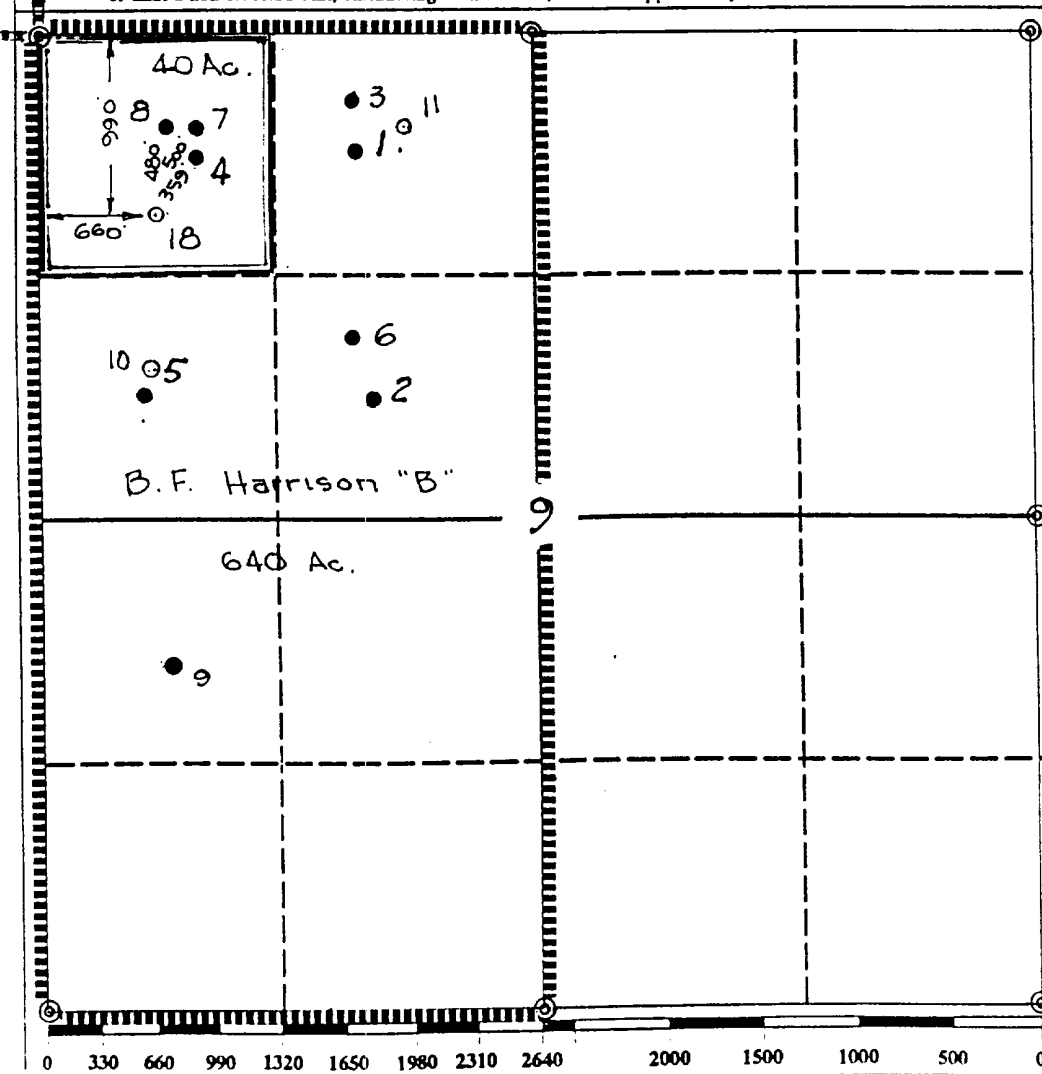
DISTRICT III
1000 Rio Brazos Rd., Aztec, NM 87410

WELL LOCATION AND ACREAGE DEDICATION PLAT

All Distances must be from the outer boundaries of the section

Operator TEXACO EXPL. & PROD. Inc.			Lease B. F. Harrison "B"		Well No. 18
Unit Letter D	Section 9	Township 23-South	Range 37-East	County Lea	
Actual Footage Location of Well: 990 feet from the North line and 660 feet from the West line					
Ground level Elev. 3319	Producing Formation San Andres		Pool Undesignated (Wildcat)	Dedicated Acreage: 40 Acres	

- Outline the acreage dedicated to the subject well by colored pencil or hatchure marks on the plat below.
- If more than one lease is dedicated to the well, outline each and identify the ownership thereof (both as to working interest and royalty).
- If more than one lease of different ownership is dedicated to the well, have the interest of all owners been consolidated by communitization, unitization, force-pooling, etc.?
☐ Yes ☐ No If answer is "yes" type of consolidation _____
If answer is "no" list the owners and tract descriptions which have actually been consolidated. (Use reverse side of this form if necessary). _____
No allowable will be assigned to the well until all interests have been consolidated (by communitization, unitization, forced-pooling, or otherwise) or until a non-standard unit, eliminating such interest, has been approved by the Division.



OPERATOR CERTIFICATION

I hereby certify that the information contained herein is true and complete to the best of my knowledge and belief.

Signature
Royce D. Mariott
Printed Name
Royce D. Mariott
Position
Division Surveyor
Company
Texaco Expl. & Prod.
Date
July 26, 1993

SURVEYOR CERTIFICATION

I hereby certify that the well location shown on this plat was plotted from field notes of actual surveys made by me or under my supervision, and that the same is true and correct to the best of my knowledge and belief.

Date Surveyed
July 15, 1993
Signature & Seal of
Professional Surveyor
John S. Piper
Certificate No. 7254
John S. Piper

Lea Co. FB. 7, Pg. 72

- | | |
|-------|---|
| 10,11 | 2" minimum 3000# W.P. adjustable choke bodies. |
| 14 | Cameron Mud Gauge or equivalent (location optional in choke line). |
| 15 | 2" minimum 3000# W.P. flanged or threaded full opening steel gate valve, or Halliburton Lo Torc Plug valve. |



TEXACO, INC.
MIDLAND DIVISION
MIDLAND, TEXAS



SCALE	DATE	EST. NO.	DRG. NO.
DRAWN BY			
CHECKED BY			

EXHIBIT C

ELF
9/22/93
6/12/96
5/31/00

11/11/01