

**NATIONAL OIL CONS. COMMISSION STATES**  
**P.O. BOX 1980 DEPARTMENT OF THE INTERIOR**  
**HOBBS, NEW MEXICO 88248**

**APPLICATION FOR PERMIT TO DRILL, DEEPEN, OR PLUG BACK**

1A. TYPE OF WORK

DRILL ☒

DEEPEN ☐

PLUG BACK ☐

B. TYPE OF WELL

OIL  
WELL ☒

GAS  
WELL ☐

OTHER ☐

SINGLE  
ZONE ☒

MULTIPLE  
ZONE ☐

2. NAME OF OPERATOR

Enron Oil & Gas Company

3. ADDRESS OF OPERATOR

P. O. Box 2267, Midland, Texas 79702

4. LOCATION OF WELL (Report location clearly and in accordance with any State requirements.)

At surface

1980' FSL & 1980' FEL

At proposed prod. zone

1980' FSL & 1980' FEL

14. DISTANCE IN MILES AND DIRECTION FROM NEAREST TOWN OR POST OFFICE\*

33 miles west of Jal, NM

15. DISTANCE FROM PROPOSED\*

LOCATION TO NEAREST

PROPERTY OR LEASE LINE, FT.

(Also to nearest drig. unit line, if any)

1980'

660'

13. DISTANCE FROM PROPOSED LOCATION\*

TO NEAREST WELL, DRILLING, COMPLETED,

OR APPLIED FOR, ON THIS LEASE, FT.

2333'

16. NO. OF ACRES IN LEASE

640

17. NO. OF ACRES ASSIGNED  
TO THIS WELL

40

19. PROPOSED DEPTH

8550'

20. ROTARY OR CABLE TOOLS

Rotary

21. ELEVATIONS (Show whether DF, RT, GR, etc.)

3559.3' GR

22. APPROX. DATE WORK WILL START\*

Before 9/1/93

PROPOSED CASING AND CEMENTING PROGRAM

| SIZE OF HOLE | SIZE OF CASING | WEIGHT PER FOOT | SETTING DEPTH | QUANTITY OF CEMENT      |
|--------------|----------------|-----------------|---------------|-------------------------|
| 14-3/4"      | 11-3/4"        | 42# H-40 A ST&C | 600'          | 275 sx CIRCULATED       |
| 11"          | 8-5/8"         | 32# J-55 LT&C   | 4150'         | 725 sx CIRCULATED       |
| 7-5/8"       | 5-1/2"         | 17# J-55 LT&C   | 8550'         | 350 sx est TOC at 3500' |

FEDERAL LEASE EXPIRES ON 9/01/93

Acreage is dedicated.

IN ABOVE SPACE DESCRIBE PROPOSED PROGRAM: If proposal is to deepen or plug back, give data on present productive zone and proposed new productive zone. If proposal is to drill or deepen directionally, give pertinent data on subsurface locations and measured and true vertical depths. Give blowout preventer program, if any.

SIGNED

*Betty Gildon*  
Betty Gildon

TITLE

Regulatory Analyst

DATE

7/21/93

(This space for Federal or State office use)

PERMIT NO.

APPROVAL DATE

APPROVED BY

(ORIG. SGD.) RICHARD L. MANUS

AREA MANAGER

DATE

AUG 20 1993

CONDITIONS OF APPROVAL, IF ANY:

APPROVAL SUBJECT TO

GENERAL REQUIREMENTS AND

SPECIAL STIPULATIONS

\*See Instructions On Reverse Side

**OIL CONSERVATION DIVISION**

**DISTRICT I**  
P.O. Box 1980, Hobbs, NM 88240

P.O. Box 2088  
Santa Fe, New Mexico 87504-2088

**DISTRICT II**  
P.O. Drawer DD, Artesia, NM 88210

**DISTRICT III**  
1000 Rio Brazos Rd., Aztec, NM 87410

**WELL LOCATION AND ACREAGE DEDICATION PLAT**

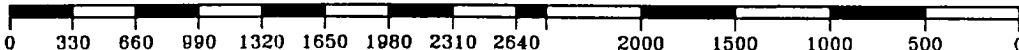
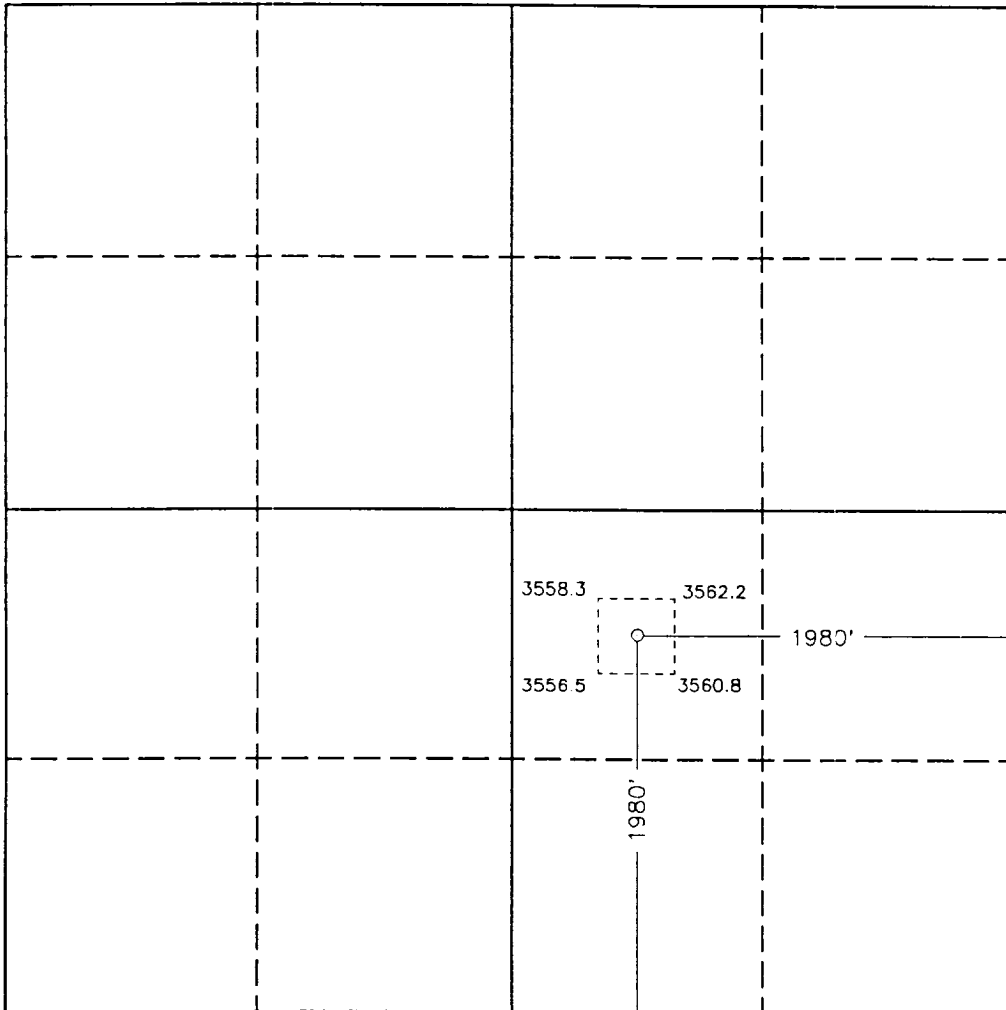
All Distances must be from the outer boundaries of the section

|  |   |                               |                                |               |
|--|---|-------------------------------|--------------------------------|---------------|
| Operator<br>ENRON OIL AND GAS CO.  |   | Lease<br>MESA VERDE 6 FEDERAL |                                | Well No.<br>2 |
| Unit Letter<br>J   | Section<br>6  | Township<br>24 SOUTH          | Range<br>32 EAST<br>NMPM       | County<br>LEA |
| Actual Footage Location of Well:<br>1980 feet from the SOUTH line and 1980 feet from the EAST line |   |                               |                                |               |
| Ground Level Elev.<br>3559.3   | Producing Formation<br>Lower Brushy Canyon-Delaware | Pool<br>Wildcat               | Dedicated Acreage:<br>40 Acres |               |

1. Outline the acreage dedicated to the subject well by colored pencil or hachure marks on the plat below.
2. If more than one lease is dedicated to the well, outline each and identify the ownership thereof (both as to working interest and royalty).
3. If more than one lease of different ownership is dedicated to the well, have the interest of all owners been consolidated by communitization, unitization, force-pooling, etc.?  
☐ Yes ☐ No If answer is "yes" type of consolidation \_\_\_\_\_

If answer is "no" list of owners and tract descriptions which have actually been consolidated. (Use reverse side of this form necessary.)

No allowable will be assigned to the well unit all interests have been consolidated (by communitization, unitization, forced-pooling, otherwise) or until a non-standard unit, eliminating such interest, has been approved by the Division.



**OPERATOR CERTIFICATION**

I hereby certify the the information contained herein is true and complete to the best of my knowledge and belief.

Signature  
*Betty Gildon*  
Printed Name  
Betty Gildon  
Position  
Regulatory Analyst  
Company  
Enron Oil & Gas Company  
Date  
7/21/93

**SURVEYOR CERTIFICATION**

I hereby certify that the well location shown on this plat was plotted from field notes of actual surveys made by me or under my supervision, and that the same is true and correct to the best of my knowledge and belief.

Date Surveyed  
MAY 15, 1993  
Signature & Seal of Professional Surveyor  
  
Certificate No. JOHN W. WEST, 878  
RONALD J. ELLISON, 3239  
GARY L. JONES, 7977  
95-44-0893

## DRILLING PROGRAM

Enron Oil & Gas Company  
Mesa Verde 6 Federal No. 2  
1980' FSL & 1980' FEL  
Sec. 6, T24S, R32E  
Lea County, New Mexico

1. Geologic Name of Surface Formation:

Permian

2. Estimated Tops of Important Geologic Markers:

|               |       |
|---------------|-------|
| Rustler       | 930'  |
| Delaware      | 4530' |
| Bell Canyon   | 4580' |
| Cherry Canyon | 5650' |
| Bone Spring   | 8400' |

3. Estimated Depths of Anticipated Fresh Water, Oil or Gas:

|          |       |             |
|----------|-------|-------------|
| Delaware | 4580' | Water & Oil |
|----------|-------|-------------|

No other formations are expected to give up oil, gas or fresh water in measurable quantities. The surface fresh water sands will be protected by setting 11-3/4" casing at 600' and circulating cement back to surface, and 8-5/8" casing will be set at 4150' with cement circulating back to surface.

Enron Oil & Gas Company  
Mesa Verde 6 Federal No. 2  
1980' FSL & 1980' FEL  
Sec. 6, T24S, R32E  
Lea County, New Mexico

4. Casing Program:

| <u>Hole Size</u> | <u>Interval</u> | <u>OD csg</u> | <u>Weight Grade Jt. Cond. Type</u> |
|------------------|-----------------|---------------|------------------------------------|
| 14-3/4           | 0- 600'         | 11-3/4        | 42# H-40 A ST&C                    |
| 11               | 0- 4150'        | 8-5/8         | 32# J-55 LT&C                      |
| 7-5/8            | 0- 8550'        | 5-1/2         | 17# J-55 LT&C                      |

Cementing Program:

- 11-3/4" Surface casing: Cement to surface with 275 sx of Class C + 2% CaCl<sub>2</sub> + 1/4#/sx flocele.
- 8-5/8" Intermediate: Cement to surface with 425 sx of Premium Plus lite + 15#/sx salt + 1/4#/sx Flocele and 300 sx Cl C + 2% CaCl<sub>2</sub>
- 5-1/2" Prod casing: Cement with 350 sx 50/50 Cl H/Poz + 0.8% Halad 9 + 1/4#/sx Flocele. This cement slurry is designed to bring TOC to 3500'.

5. Minimum Specifications for Pressure Control:

The blowout preventer equipment (BOP) shown in Exhibit #1 will consist of a double ram-type (3000 psi WP) preventer and an annular preventer (3000 psi WP). Units will be hydraulically operated and the ram-type will be equipped with blind rams on top and drill pipe rams on bottom. All will be installed on the 11-3/4" surface casing and used continuously until TD is reached. All BOP's and accessory equipment will be tested to 1000 psi before drilling out of surface casing. Before drilling out of intermediate casing, the ram-type BOP and accessory equipment will be tested to 3000 psi and the annular to 70% of rated working pressure (2100 psi).

Pipe rams will be operationally checked each 24 hour period. Blind rams will be operationally checked on each trip out of the hole. These checks will be noted on the daily tour sheets. A 2" kill line and 4" choke line will be included in the drilling spool located below the ram-type BOP. Other accessories to the BOP equipment will include a kelly cock and floor safety 2valve (inside BOP) and choke lines and choke manifold with 3000 psi WP rating.

ENRON OIL & GAS COMPANY

EXHIBIT 1

ATTACHMENT

