

**DISTRICT I**

P. O. Box 1980  
Hobbs, NM 88240

**DISTRICT II**

P. O. Drawer DD  
Artesia, NM 88210

**DISTRICT III**

1000 Rio Brazos Rd  
Aztec, NM 87410

**OIL CONSERVATION DIVISION**

P. O. Box 2088  
Santa Fe, New Mexico 87504-2088

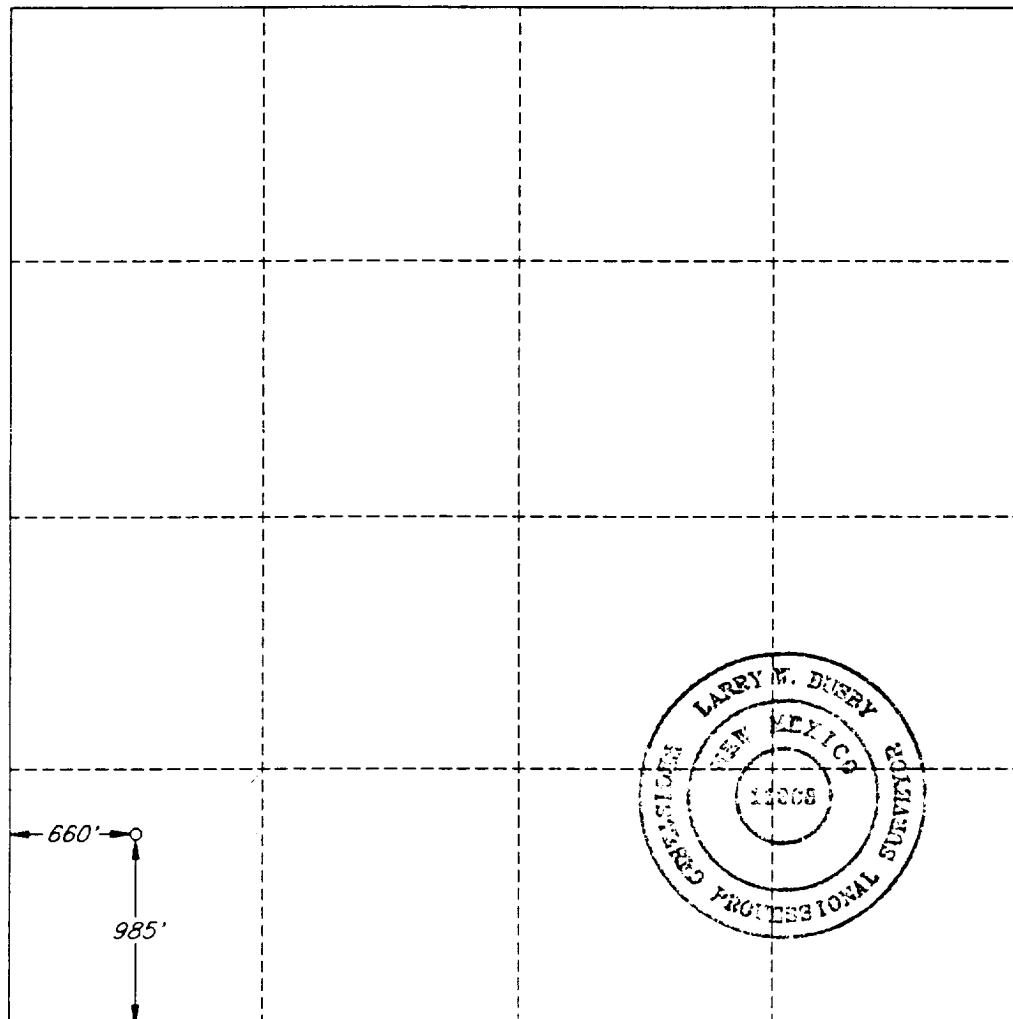
RECEIVED  
AUG 27 1993

**WELL LOCATION AND ACREAGE DEDICATION PLAT**

All distances must be from the outer boundaries of the section.

Operator <b>PLAINS PETROLEUM OPER. CO.</b>			Lease <b>E. C. HILL 'B' FEDERAL</b>		Well No. <b>10</b>
Unit Letter <b>M</b>	Section <b>35</b>	Township <b>23 SOUTH</b>	Range <b>37 EAST, N.M.P.M.</b>	County <b>EDDY Lea</b>	
Actual Footage Location of Well					
985 feet from the SOUTH line and		660 feet from the WEST line			
Ground Level Elev. <b>3251'</b>	Producing Formation <b>Teague Blinebry(WC/Ellnbrg)</b>		Pool <b>Teague Blinebry(Ellnbrgr)</b>		40 Acres

- Outline the acreage dedicated to the subject well by colored pencil or hatchure marks on the plat below.
- If more than one lease is dedicated to the well, outline each and identify the ownership thereof (both as to working interest and royalty).
- If more than one lease of different ownership is dedicated to the well, have the interest of all the owners been consolidated by communitization, unitization, forced-pooling, etc.?  
☐ Yes ☐ No If answer is "yes", type of consolidation \_\_\_\_\_  
If the answer is "no", list the owners and tract descriptions which have actually been consolidated. (Use the reverse side of this form if necessary.) \_\_\_\_\_  
No allowable will be assigned to the well until all interests have been consolidated (by communitization, unitization, forced-pooling, or otherwise) or until a non-standard unit, eliminating such interest, has been approved by the division.



**OPERATOR CERTIFICATION**

I hereby certify that the information herein is true and complete to the best of my knowledge and belief.

Signature

Printed Name

Dominic J. Bazile

Position

Area Engineer

Company

Plains Petroleum Oper Co

Date

July 16, 1993 (8-25-93)

**SURVEYOR CERTIFICATION**

I hereby certify that the well location shown on this plat was plotted from field notes of actual surveys made by me or under my supervision, and that the same is true and correct to the best of my knowledge and belief.

Date Surveyed

JUNE 30, 1993

Signature and Seal of  
Professional Surveyor

Certificate No.

LARRY W. BUSBY R.P.S. #11398

V.H.B. / 97222 / 45SW

EXHIBIT

**RECEIVED**

SEP 07 1993

UCD HOBBS  
OFFICE