

## DISTRICT I

P.O. Box 1980, Hobbs, NM 88241-1980

State of New Mexico

Energy, Minerals and Natural Resources Department

Form C-101

Revised February 10, 1

## DISTRICT II

P.O. Box Drawer DD, Artesia, NM 88211-0

## OIL CONSERVATION DIVISION

Instructions on  
Submit to Appropriate District

## DISTRICT III

1000 Rio Brazos Rd., Aztec, NM 8741

P.O. Box 2088

State Lease - 6 Co

## DISTRICT IV

P.O. Box 2088, Santa Fe, NM 87504-2

Santa Fe, New Mexico 87504-

Fee Lease - 5 Cop

☒ AMENDED REPORT

## APPLICATION FOR PERMIT TO DRILL, RE-ENTER, DEEPEN, PLUGBACK, OR ADD A ZONE

1 Operator Name and Address TEXACO EXPLORATION & PRODUCTION INC. P.O. Box 3109, Midland Texas 79702		2 OGRID Number 022351
		3 API Number 30-025-32229
4 Property Co 13195	5 Property Name DAVIS, F. B.	6 Well No 4

## 7 Surface Location

UL or lot	Section	Township	Range	Lot.Id	Feet From Th	orth/South Lin	Feet From The	East/West Line	County
H	8	23-S	37-E		1725	NORTH	425	EAST	LEA

## 8 Proposed Bottom Hole Location If Different From Surface

UL or lot	Section	Township	Range	Lot.Id	Feet From Th	orth/South Lin	Feet From The	East/West Line	County

## Proposed Pool 1

TEAGUE GLORIETA-UPPER PADDOCK, SOUTHWEST

## 10 Proposed Pool 2

11 Work Type Cod N	12 WellType Code O	13 Rotary or C.T ROTARY	14 Lease Type Co P	15 Ground Level Elevation 3319'
16 Multiple No	17 Proposed Dept 5475'	18 Formation GLORIETA/PADDOCK	19 Contractor NABORS	20 Spud Date 6/30/95

## 21 Proposed Casing and Cement Program

SIZE OF HOLE	SIZE OF CASING	WEIGHT PER FOOT	SETTING DEPTH	SACKS OF CEMENT	EST. TOP
11	8 5/8	24#	1180'	550 SACKS	SURFACE
7 7/8	5 1/2	15.5 & 17#	5475'	1700 SACKS	SURFACE

22 Describe the proposed program. If this application is to DEEPEN or PLUG BACK give the data on the present productive zone and proposed new productive zone. Describe the blowout prevention program, if CEMENTING PROGRAM:  
SURFACE - 350 SACKS CLASS C W/ 4% GEL (13.5 PPG, 1.74 CF/S, 9.1 GW/S). F/B 200 SACKS CLASS C (14.8 PPG, 1.34 CF/S, 6.3 GW/S).  
PRODUCTION - 1500 SACKS 35/65 POZ H W/ 6% GEL, 5% SALT, 1/4# FC (12.4 PPG, 2.14 CF/S, 11.9 GW/S). F/B 200 SACKS 50/50 POZ H W/ 2% GEL, 5% SALT, 1/4# FC (14.2 PPG, 1.35 CF/S, 6.3 GW/S).

THERE ARE NO OTHER OPERATORS IN THIS QUARTER QUARTER SECTION.

THIS LOCATION WAS MOVED FOR GEOLOGICAL REASONS. THE CASING AND CEMENTING PROGRAM HAS BEEN REVISED.

2 I hereby certify that the rules and regulations of the Oil Division have been complied with and that the information is true and complete to the best of my knowledge and belief

Signature

*C. Wade Howard*

Printed Name

C. Wade Howard

Title Eng. Assistant

Date 5/3/95

Telephone 688-4606

## OIL CONSERVATION DIVISION

Approved By

ORIGINAL SIGNED BY JERRY SEXTON

Title: DISTRICT I SUPERVISOR

Approval Date MAY 08 1995

Expiration Date

Conditions of Approval:

Attached ☐

DISTRICT I  
P. O. Box 1980, Hobbs, NM 88240

DISTRICT II  
P. O. Drawer DD, Artesia, NM 88210

DISTRICT III  
1000 Rio Brazos Rd., Aztec, NM 87410

DISTRICT IV  
P. O. Box 2088, Santa Fe, NM 87504-2088

State of New Mexico  
Energy, Minerals and Natural Resources Department

OIL CONSERVATION DIVISION

PO Box 2088  
Santa Fe, NM 87504-2088

Form C-102  
Revised February 10, 1994

Instructions on back

Submit to Appropriate District Office

State Lease-4 copies  
Fee Lease-3 copies

☐ AMENDED REPORT

WELL LOCATION AND ACREAGE DEDICATION PLAT

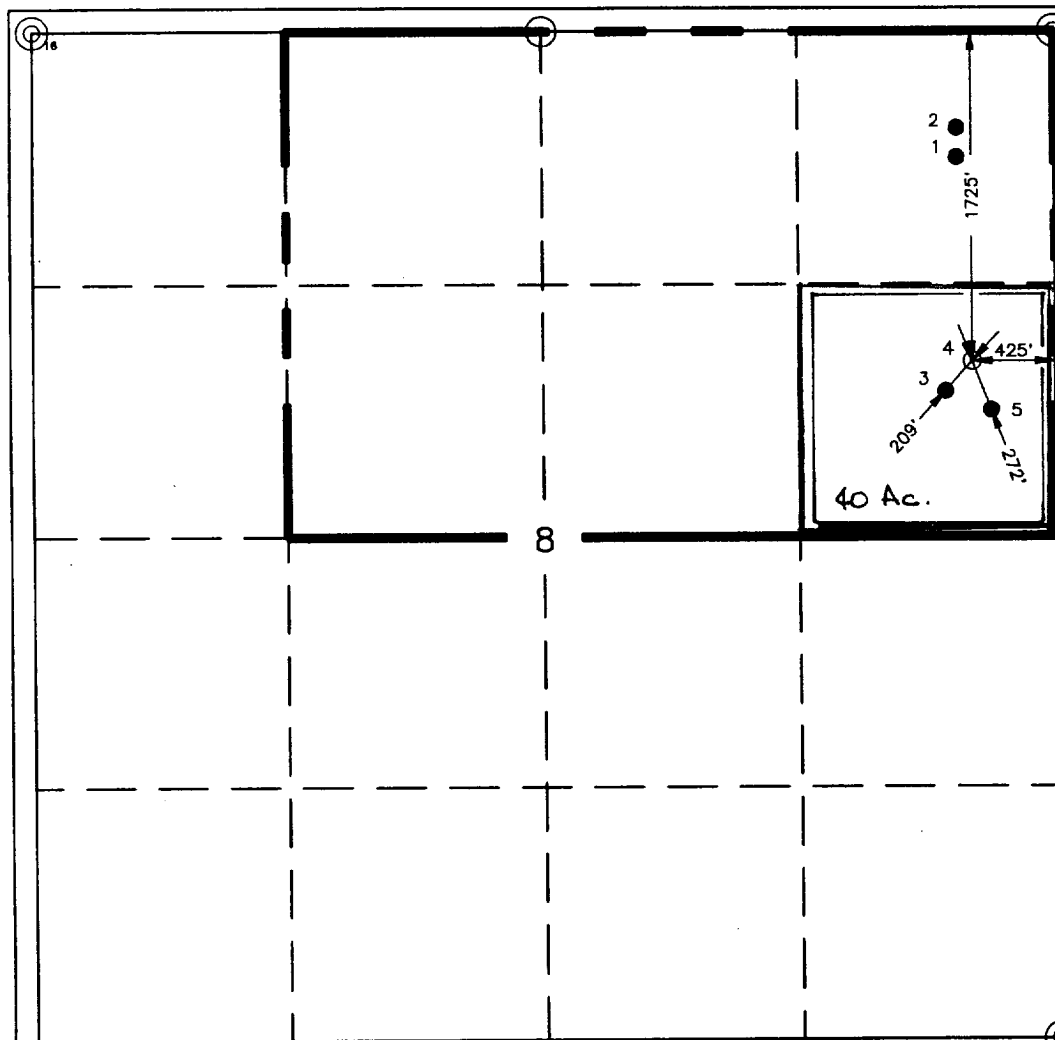
<sup>1</sup> API Number 30-025-32229		<sup>2</sup> Pool Code		<sup>3</sup> Pool Name Teague Glorieta-Upper Paddock, Southwest	
<sup>4</sup> Property Code 13195		<sup>5</sup> Property Name F. B. Davis			<sup>6</sup> Well Number 4
<sup>7</sup> GRID No. 22351		<sup>8</sup> Operator Name TEXACO EXPLORATION & PRODUCTION, INC.			<sup>9</sup> Elevation 3319'

<sup>10</sup> Surface Location									
UL or lot no. H	Section 8	Township 23-S	Range 37-E	Lot Idn	Feet from the 1725'	North/South line North	Feet from the 425'	East/West line East	<sup>7</sup> County Lea

<sup>11</sup> Bottom Hole Location If Different From Surface									
UL or lot no.	Section	Township	Range	Lot Idn	Feet from the	North/South line	Feet from the	East/West line	<sup>7</sup> County

<sup>12</sup> Dedicated Acres 40	<sup>13</sup> Joint or Infill	<sup>14</sup> Consolidation Code	<sup>15</sup> Order No.
-------------------------------------	-------------------------------	----------------------------------	-------------------------

NO ALLOWABLE WILL BE ASSIGNED TO THIS COMPLETION UNTIL ALL INTERESTS HAVE BEEN CONSOLIDATED  
OR A NON-STANDARD UNIT HAS BEEN APPROVED BY THE DIVISION.



<sup>17</sup>OPERATOR CERTIFICATION

I hereby certify that the information contained herein is true and complete to the best of my knowledge and belief.

Signature

C. Wade Howard

Printed Name

C. Wade Howard

Position

Engineer's Assistant

Company

Texaco Expl. & Prod. Inc.

Date

May 1, 1995

<sup>18</sup>SURVEYOR CERTIFICATION

I hereby certify that the well location shown on this plat was plotted from field notes of actual surveys made by me or under my supervision, and that the same is true and correct to the best of my knowledge and belief.

Date Surveyed

April 27, 1995

Signature & Seal of Professional Surveyor

John S. Piper

Certificate No.

7254 John S. Piper

Sheet