

OIL CONSERVATION DIVISION

P.O. Box 2088

Santa Fe, New Mexico 87504-2088

DISTRICT I
P.O. Box 1980, Hobbs, NM 88240

DISTRICT II
P.O. Drawer DD, Artesia, NM 88210

DISTRICT III
1000 Rio Brazos Rd., Aztec, NM 87410

WELL LOCATION AND ACREAGE DEDICATION PLAT

All Distances must be from the outer boundaries of the section

Operator TEXACO EXPL. AND PROD. Inc.			Lease F. B. Davis		Well No. 4
Unit Letter H	Section 8	Township -23-South	Range -37-East	County NMPM Lea	
Actual Footage Location of Well: 2004 feet from the North line and 650 feet from the East line					
Ground level Elev. 3321	Producing Formation GLORIETA/UPPER Paddock		Pool Teague Southwest, Paddock		Dedicated Acreage: 40 Acres

1. Outline the acreage dedicated to the subject well by colored pencil or hatchure marks on the plat below.

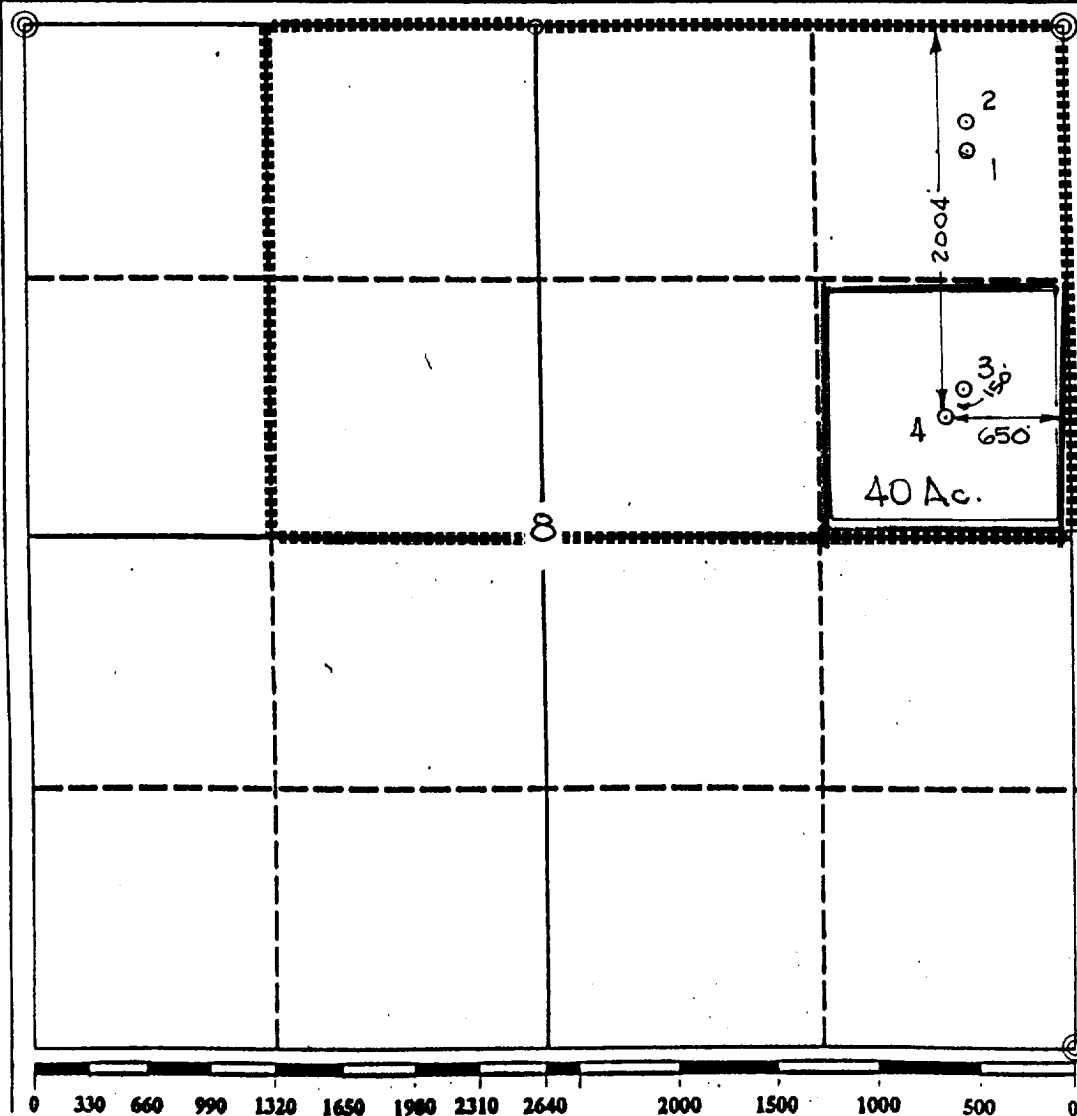
2. If more than one lease is dedicated to the well, outline each and identify the ownership thereof (both as to working interest and royalty).

3. If more than one lease of different ownership is dedicated to the well, have the interest of all owners been consolidated by communitization, unitization, force-pooling, etc.?

☐ Yes ☐ No If answer is "yes" type of consolidation

If answer is "no" list the owners and tract descriptions which have actually been consolidated. (Use reverse side of this form if necessary.)

No allowable will be assigned to the well until all interests have been consolidated (by communitization, unitization, forced-pooling, or otherwise) or until a non-standard unit, eliminating such interest, has been approved by the Division.



OPERATOR CERTIFICATION

I hereby certify that the information contained herein in true and complete to the best of my knowledge and belief.

Signature
Royce D. Mariott
Printed Name
Royce D. Mariott
Position
Division Surveyor
Company
Texaco Expl. & Prod.
Date
September 7, 1993

SURVEYOR CERTIFICATION

I hereby certify that the well location shown on this plat was plotted from field notes of actual surveys made by me or under my supervision, and that the same is true and correct to the best of my knowledge and belief.

Date Surveyed
August 30, 1993

Signature & Seal of
Professional Surveyor

John S. Piper

Certificate No.
7254 John S. Piper

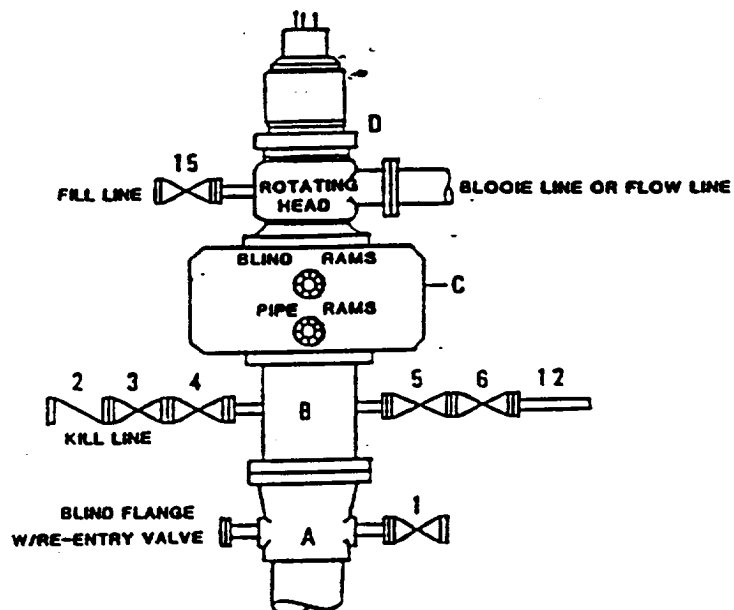
Lea Co. FB. 9, Pg. 43

RECEIVED

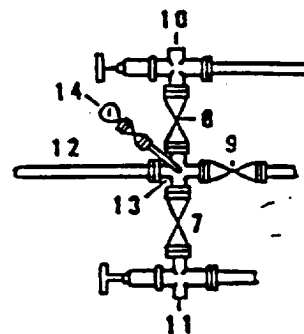
SEP 09 1993

WILLIAMS
OFFICE

**DRILLING CONTROL
CONDITION II-B 3000 WP
FOR AIR DRILLING OR
WHERE NITROGEN OR AIR BLOWS ARE EXPECTED**



H₂S TRIM REQUIRED
YES ☒ NO ☐



DRILLING CONTROL

MATERIAL LIST - CONDITION II - B

- | | |
|----------------|---|
| A | Texaco Wellhead |
| B | 3000# W.P. drilling spool with a 2" minimum flanged outlet for kill line and 3" minimum flanged outlet for choke line. |
| C | 3000# W.P. Dual ram type preventer, hydraulic operated with 1" steel, 3000# W.P. control lines (where sub-structure height is adequate, 2 - 3000# W.P. single ram type preventers may be utilized). |
| D | Rotating Head with fill up outlet and extended Bleed Line. |
| 1,3,4,
7,8, | 2" minimum 3000# W.P. flanged full opening steel gate valve, or Halliburton Lo Torc Plug valve. |
| 2 | 2" minimum 3000# W.P. back pressure valve. |
| 5,6,9 | 3" minimum 3000# W.P. flanged full opening steel gate valve, or Halliburton Lo Torc Plug valve. |
| 12 | 3" minimum schedule 80, Grade "B", seamless line pipe. |
| 13 | 2" minimum x 3" minimum 3000# W.P. flanged cross. |
| 10,11 | 2" minimum 3000# W.P. adjustable choke bodies. |
| 14 | Cameron Mud Gauge or equivalent (location optional in choke line). |
| 15 | 2" minimum 3000# W.P. flanged or threaded full opening steel gate valve, or Halliburton Lo Torc Plug valve. |



TEXACO, INC.
MIDLAND DIVISION
MIDLAND, TEXAS



SCALE	DATE	EST. NO.	DRG. NO.
DRAWN BY			
CHECKED BY			
APPROVED BY			

EXHIBIT C

50/12/2



RECEIVED

SEP 03 1993

COMMUNICATIONS
OFFICE