

DISTRICT I
P.O. Box 1980, Hobbs, NM 88240

DISTRICT II
P.O. Drawer DD, Artesia, NM 88210

OIL CONSERVATION DIVISION

P.O. Box 2088
Santa Fe, New Mexico 87504-2088

INSTRUCTIONS ON REVERSE
SIDE

This form is not to be used for
reporting packer leakage tests in
Northwest New Mexico

SOUTHEAST NEW MEXICO PACKER LEAKAGE TEST

Operator Samedan Oil Corporation			Lease SHARP			Well No. 1	
Location of Well	Unit	Sec.	Twp	Rge	County		
	F	12	23S	37E	LEA		
Name of Reservoir or Pool			Type of Prod. (Oil or Gas)	Method of Prod. Flow, Art Lift	Prod. Medium (Tbg. or Csg)	Choke Size	
Upper Compl	CLINE LWR PADK/BLBY		OIL	F	TB6	20/64	
Lower Compl	CLINE TUBB Assoc		OIL	F	TB6	19/64	

FLOW TEST NO. 1

Both zones shut-in at (hour, date): 7/08/94 6:00AM

Well opened at (hour, date): 6:00AM 07/09/94

Indicate by (X) the zone producing..... X

Pressure at beginning of test..... 1650 1350

Stabilized? (Yes or No)..... YES NO

Maximum pressure during test..... 1650 1550

Minimum pressure during test..... 600 1350

Pressure at conclusion of test..... 600 1550

Pressure change during test (Maximum minus Minimum)..... 1050 200

Was pressure change an increase or a decrease?..... DECREASE INCREASE

Well closed at (hour, date): 6:00AM 07/10/94 Total Time On
Production 24

Oil Production Gas Production
During Test: 35 bbls; Grav. 40.3 During Test 253 MCF; GOR 7229

Remarks

FLOW TEST NO. 2

Well opened at (hour, date): 6:00AM 07/11/94

Indicate by (X) the zone producing..... X

Pressure at beginning of test..... 1800 1700

Stabilized? (Yes or No)..... YES YES

Maximum pressure during test..... 1900 1600

Minimum pressure during test..... 1800 1450

Pressure at conclusion of test..... 1900 1450

Pressure change during test (Maximum minus Minimum)..... 100 250

Was pressure change an increase or a decrease?..... INCREASE DECREASE

Well closed at (hour, date): 12:00PM 07/12/94 Total time on
Production 24

Oil production Gas Production
During Test: 30 bbls; Grav. 40.2 ; During Test 271 MCF; GOR 9033

Remarks

OPERATOR CERTIFICATE OF COMPLIANCE

I hereby certify that the information contained herein is true
and completed to the best of my knowledge

Samedan Oil Corporation

Operator

Signature

Judy Throneberry

Div. Prod. Clerk

Printed Name

Title

08/16/94
Date

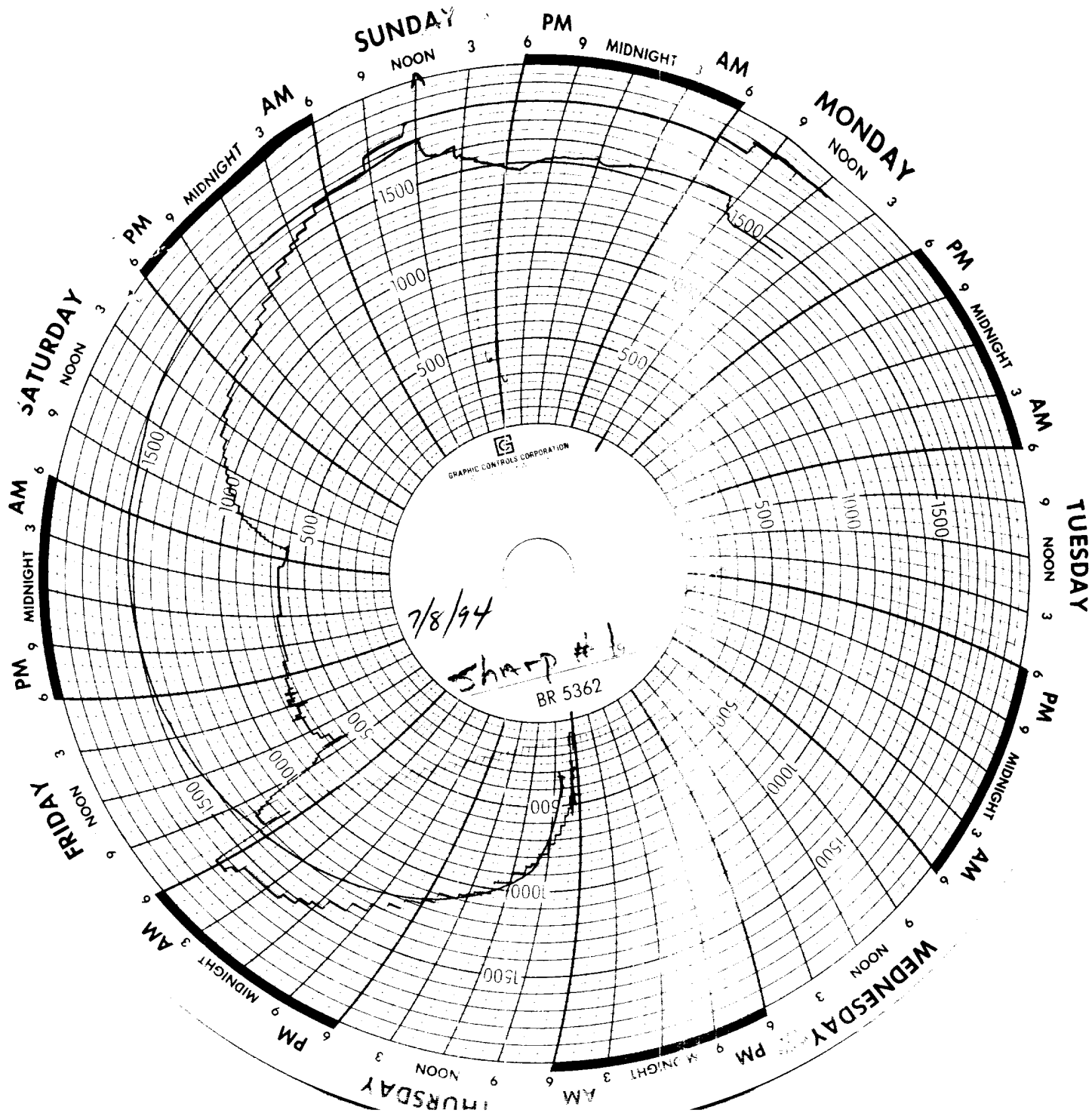
713-876-6150
Telephone No.

OIL CONSERVATION DIVISION

Date Approved

By

Title



Shrimp Tubbs &
Paddock shut in
for 24 hrs.
Paddock open for 24 hrs
Tubbs shut in
Paddock & Tubbs shut
in for 24 hrs.
Tubbs open for 24 hrs
Paddock shut in

Blue - Tubbs
R. 1 - Paddock