

DISTRICT I
P. O. Box 1980
Hobbs, NM 88240

DISTRICT II
P. O. Drawer DD
Artesia, NM 88210

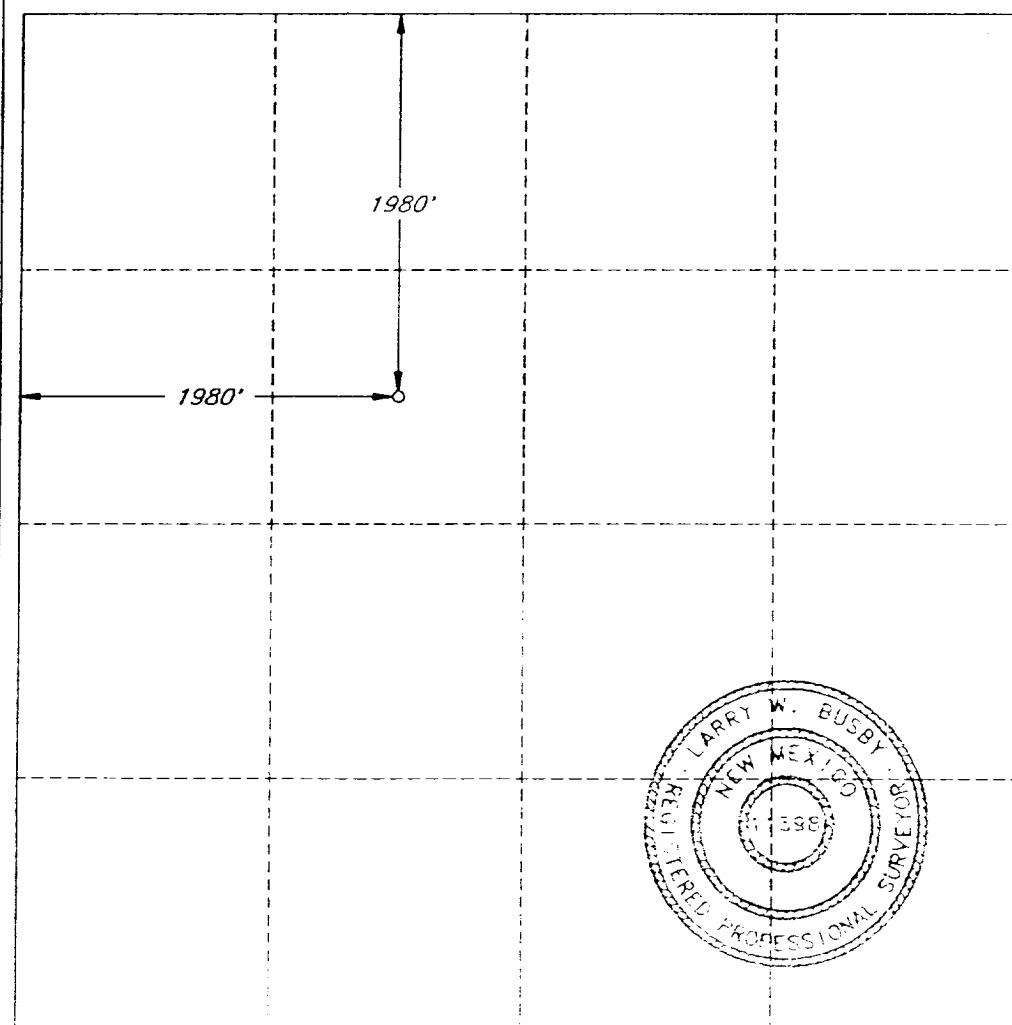
DISTRICT III
1000 Rio Brazos Rd
Aztec, NM 87410

OIL CONSERVATION DIVISION
P. O. Box 2088
Santa Fe, New Mexico 87504-2088

WELL LOCATION AND ACREAGE DEDICATION PLAT
All distances must be from the outer boundaries of the section.

Operator SAMEDAN OIL CORPORATION			Lease SHARP		Well No. 1
Unit Letter F	Section 12	Township 23 SOUTH	Range 37 EAST, N.M.P.M.	County LEA	
Actual Footage Location of Well					
1980 feet from the NORTH line and		1980 feet from the WEST line			
Ground Level Elev. 3297'	Producing Formation Lower Paddock/Blinebry		Pool Cline	40 Acres	

1. Outline the acreage dedicated to the subject well by colored pencil or hatchure marks on the plat below.
2. If more than one lease is dedicated to the well, outline each and identify the ownership thereof (both as to working interest and royalty).
3. If more than one lease of different ownership is dedicated to the well, have the interest of all the owners been consolidated by communitization, unitization, forced-pooling, etc.?
☐ Yes ☐ No If answer is "yes", type of consolidation _____
If the answer is "no", list the owners and tract descriptions which have actually been consolidated. (Use the reverse side of this form if necessary.) _____
No allowable will be assigned to the well until all interests have been consolidated (by communitization, unitization, forced-pooling, or otherwise) or until a non-standard unit, eliminating such interest, has been approved by the division.



OPERATOR CERTIFICATION

I hereby certify that the information herein is true and complete to the best of my knowledge and belief.

Signature
Judy Throneberry

Printed Name
Judy Throneberry

Position
Div Prod Clerk

Company
Samedan Oil Corp

Date
01/20/94

SURVEYOR CERTIFICATION

I hereby certify that the well location shown on this plat was plotted from field notes of actual surveys made by me or under my supervision, and that the same is true and correct to the best of my knowledge and belief.

Date Surveyed
SEPTEMBER 28, 1993

Signature and Seal of
Professional Surveyor

Certificate No.
LARRY W. BUSBY R.P.S. #11398