

UNITED STATES
DEPARTMENT OF THE INTERIOR
BUREAU OF LAND MANAGEMENT

APPLICATION FOR PERMIT TO DRILL, DEEPEN, OR PLUG BACK

1a. TYPE OF WORK

DRILL ☒

DEEPEN ☐

PLUG BACK ☐

b. TYPE OF WELL

OIL WELL ☒

GAS WELL ☐

OTHER

SINGLE ZONE ☒

MULTIPLE ZONE ☐

2. NAME OF OPERATOR

Samedan Oil Corporation

3. ADDRESS OF OPERATOR

10 Desta Drive, Suite 240 East, Midland, Texas 79705

4. LOCATION OF WELL (Report location clearly and in accordance with any State requirements.)*

At surface

430' FSL & 1988 FWL

At proposed prod. zone

Unit A

NP

14. DISTANCE IN MILES AND DIRECTION FROM NEAREST TOWN OR POST OFFICE*

8 miles South-Southeast of Eunice

15. DISTANCE FROM PROPOSED*

LOCATION TO NEAREST PROPERTY OR LEASE LINE, FT. 430'
(Also to nearest drlg. unit line, if any)

18. DISTANCE FROM PROPOSED LOCATION*

TO NEAREST WELL, DRILLING COMPLETED, OR APPLIED FOR, ON THIS LEASE, FT. 1650'

16. NO. OF ACRES IN LEASE

1395.95

19. PROPOSED DEPTH

6300'

17. NO. OF ACRES ASSIGNED TO THIS WELL

40

20. ROTARY OR CABLE TOOLS

Rotary

21. ELEVATIONS (Show whether DF, RT, GR, etc.)

3304.3 GR

22. APPROX. DATE WORK WILL START*

Upon approval

23.

PROPOSED CASING AND CEMENTING PROGRAM

SIZE OF HOLE	SIZE OF CASING	WEIGHT PER FOOT	SETTING DEPTH	QUANTITY OF CEMENT
17 1/2	13 3/8	48#	900	465 sx CIRCULATE
12 1/4	*8 5/8	24# & 32#	4000 *	To be determined by hole condition
7 7/8	5 1/2	15.5#	6300	* 615 sx

*See Stips.

- * A 12 1/4" hole will be drilled to 4000' and 8 5/8" casing shall be run and cemented if significant water flow is encountered. If there is no water flow, the hole size will be reduced to 7 7/8" and drilled to 6300'.

After setting production casing, pay zone will be perforated and stimulated as necessary.

See attachments for: Supplemental Drilling Data
BOP Sketch
Surface Use and Operations Plan

IN ABOVE SPACE DESCRIBE PROPOSED PROGRAM: If proposal is to deepen or plug back, give data on present productive zone and proposed new productive zone. If proposal is to drill or deepen directionally, give pertinent data on subsurface locations and measured and true vertical depths. Give blowout preventer program, if any.

24.

SIGNED

Judy Thronberry

TITLE Division Production Clerk

DATE 8-16-93

(This space for Federal or State office use)

PERMIT NO.

APPROVAL DATE

APPROVED BY

(ORIG. SGD.) RICHARD L. MANUS

TITLE

AREA MANAGER

DATE

CONDITIONS OF APPROVAL, IF ANY:

APPROVAL SUBJECT TO
GENERAL REQUIREMENTS AND
SPECIAL STIPULATIONS

*See Instructions On Reverse Side

ATTACHED

Title 18 U.S.C. Section 1001, makes it a crime for any person knowingly and willfully to make to any department or agency of the United States any false, fictitious or fraudulent statements or representations as to any matter within its jurisdiction.

UNITED STATES
DEPARTMENT OF THE INTERIOR
BUREAU OF LAND MANAGEMENT

FORM APPROVED
Budget Bureau No. 1004-0135
Expires: March 31, 1993

SUNDRY NOTICES AND REPORTS ON WELLS

Do not use this form for proposals to drill or to deepen or reentry to a different reservoir.
Use "APPLICATION FOR PERMIT—" for such proposals

SUBMIT IN TRIPLICATE

1. Type of Well

☒ Oil Well ☐ Gas Well ☐ Other

2. Name of Operator

Samedan Oil Corporation

3. Address and Telephone No.

10 Desta Drive, Suite 240 East, Midland, Texas 79705 (915)684-8491

4. Location of Well (Footage, Sec., T., R., M., or Survey Description)

2310' FWL & 430' FSL Sec 1, T-23-S, R-37-E

5. Lease Designation and Serial No.

NM 2244

6. If Indian, Allottee or Tribe Name

7. If Unit or CA, Agreement Designation

8. Well Name and No.

Sarah B #4

9. API Well No.

10. Field and Pool, or Exploratory Area

Cline/Blaine

11. County or Parish, State

Lea, NM

12. CHECK APPROPRIATE BOX(s) TO INDICATE NATURE OF NOTICE, REPORT, OR OTHER DATA

TYPE OF SUBMISSION

- ☐ Notice of Intent
☒ Subsequent Report
☐ Final Abandonment Notice

TYPE OF ACTION

- ☐ Abandonment
☐ Recompletion
☐ Plugging Back
☐ Casing Repair
☐ Altering Casing
☒ Other Restake location
☐ Change of Plans
☐ New Construction
☐ Non-Routine Fracturing
☐ Water Shut-Off
☐ Conversion to Injection
☐ Dispose Water

(Note: Report results of multiple completion on Well Completion or Recompletion Report and Log form.)

13. Describe Proposed or Completed Operations (Clearly state all pertinent details, and give pertinent dates, including estimated date of starting any proposed work. If well is directionally drilled, give subsurface locations and measured and true vertical depths for all markers and zones pertinent to this work.)*

Restaked location due to archeological study

RECEIVED
OCT 5 11 07 AM '93
CARTER
AREA

14. I hereby certify that the foregoing is true and correct

Signed

Judy Shronberg

Title Division Production Clerk

Date 10-1-93

(This space for Federal or State office use)

Approved by

Title

Date

Conditions of approval, if any:

Submit to the Appropriate
District Office
State Lease - 4 copies
Fee Lease - 3 copies

State of New Mexico
Energy, Minerals, and Natural Resources Department

Form C-102
Revised 1-1-89

DISTRICT I

P. O. Box 1980
Hobbs, NM 88240

DISTRICT II

P. O. Drawer DD
Artesia, NM 88210

DISTRICT III

1000 Rio Brazos Rd
Aztec, NM 87410

OIL CONSERVATION DIVISION

P. O. Box 2088
Santa Fe, New Mexico 87504-2088

WELL LOCATION AND ACREAGE DEDICATION PLAT

All distances must be from the outer boundaries of the section.

Operator SAMEDAN OIL CORPORATION			Lease SARAH 'B'		Well No. 4
Unit Letter N	Section 1	Township 23 SOUTH	Range 37 EAST, N.M.P.M.	County LEA	
Actual Footage Location of Well					
430 feet from the SOUTH line and		2310 feet from the WEST line			
Ground Level Elev. 3303'	Producing Formation Tubb	Pool Cline		40 Acres	

- Outline the acreage dedicated to the subject well by colored pencil or hatchure marks on the plat below.
- If more than one lease is dedicated to the well, outline each and identify the ownership thereof (both as to working interest and royalty).
- If more than one lease of different ownership is dedicated to the well, have the interest of all the owners been consolidated by communitization, unitization, forced-pooling, etc.?

☐ Yes ☐ No If answer is "yes", type of consolidation _____
 If the answer is "no", list the owners and tract descriptions which have actually been consolidated. (Use the reverse side of this form if necessary.) _____
 No allowable will be assigned to the well until all interests have been consolidated (by communitization, unitization, forced-pooling, or otherwise) or until a non-standard unit, eliminating such interest, has been approved by the division.

OPERATOR CERTIFICATION

I hereby certify that the information herein is true and complete to the best of my knowledge and belief.

Signature

Judy Throneberry
Printed Name

Judy Throneberry

Position

Div Production Clerk

Company

Samedan Oil Corp.

Date

10/25/93

SURVEYOR CERTIFICATION

I hereby certify that the well location shown on this plat was plotted from field notes of actual surveys made by me or under my supervision, and that the same is true and correct to the best of my knowledge and belief.

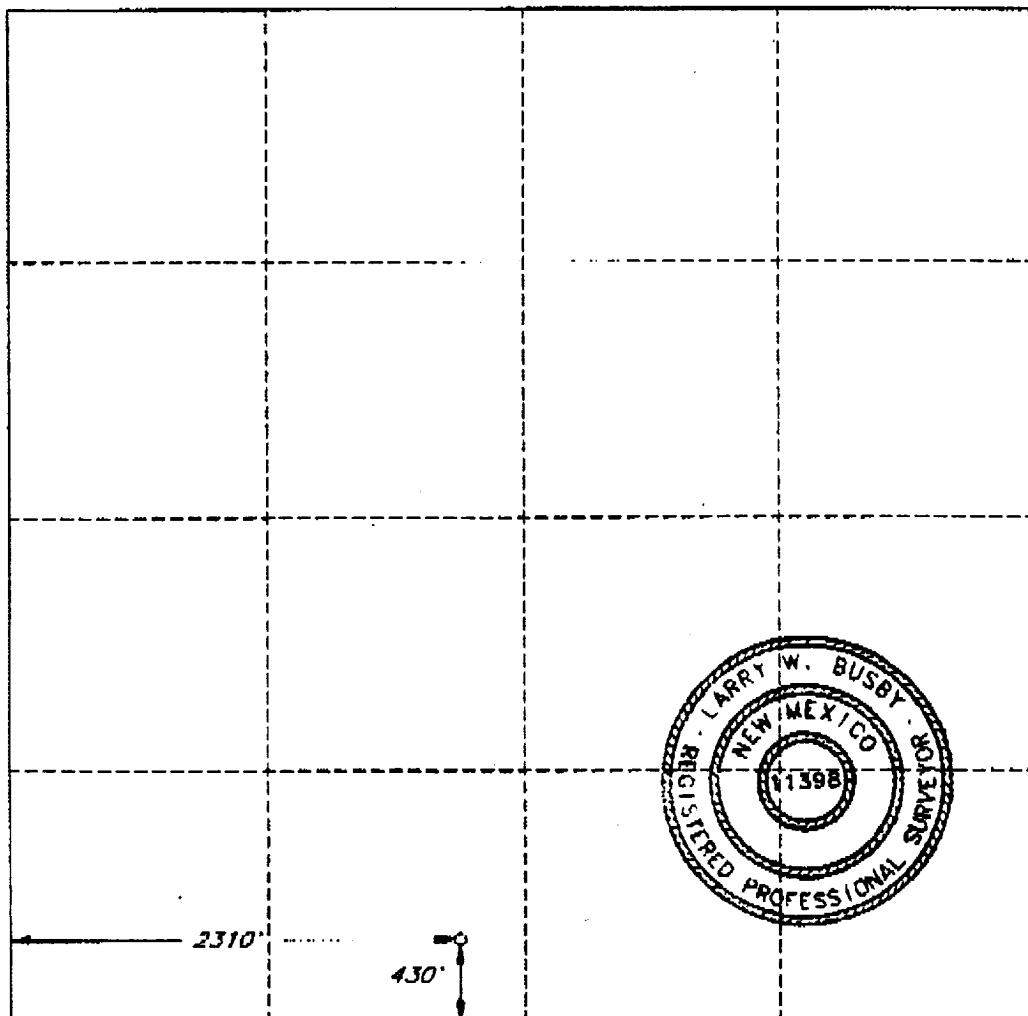
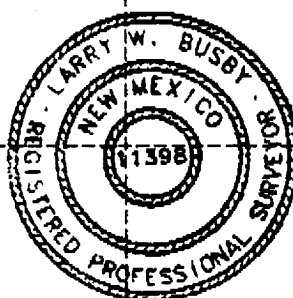
Date Surveyed

SEPTEMBER 28, 1993

Signature and Seal of Professional Surveyor

Larry W. Busby
Certificate No.

LARRY W. BUSBY R.P.S. #11398
LWB / 99301 / 455F



SUPPLEMENTAL DRILLING DATA

SAMEDAN OIL CORPORATION WELL NO. 4 SARAH B LEASE

1. SURFACE FORMATION: Quaternary.

2. ESTIMATED TOPS OF GEOLOGICAL MARKERS:

Yates	2670	Paddock	5420
Penrose	3710	Blinebry	5680
Grayburg	3780	Tubb	6120
San Andres	4100	Drinkard	6220
Glorieta	5140		

3. ANTICIPATED POSSIBLE HYDROCARBON BEARING ZONES:

Primary:	Blinebry	5680
Secondary:	Penrose	3710
	Graybury	3780
	Paddock	5420
	Tubb	6120
	Drinkard	6220

4. PROPOSED CASING AND CEMENTING PROGRAM:

<u>CASING SIZE</u>	<u>SETTING DEPTH</u>		<u>WEIGHT</u>	<u>GRADE</u>	<u>JOINT</u>
	<u>FROM</u>	<u>TO</u>			
13 3/8"	0'	900'	48#	H-40	ST&C
8-5/8"	0'	4000	24 & 32#	J-55	ST&C
5 1/2"	0'	6300'	15.5#	J-55	ST&C

Equivalent or adequate grades and weights of casing may be substituted at time casing is run, depending on availability.

13 3/8" casing will be cemented with 265 sacks class "C" Lite + 200 sacks class "C" w/2% CaCl + 1/4# cello seal. Cement to circulate to surface.

8 5/8" casing shall be run if a significant water flow is encountered. It shall be cemented with a volume to circulate.

5 1/2" casing will be cemented with 250 sacks Super "C" + 365 sacks class "C" + 5/10% CF-14 + 3/10% Thrifty Lite. If need for a stage tool is indicated, it will be positioned to best suit hole conditions at time casing is run. Cement to tie back to last casing string.

Cement may have lost circulation or other additives depending on hole conditions at the time casing is run.

5. PRESSURE CONTROL EQUIPMENT:

Blow out prevention equipment, while drilling below the 13 3/8" casing seat, will be a 3000 psi working pressure BOP stack. A BOP sketch is attached.

6. CIRCULATING MEDIUM:

Surface to 900 feet: Fresh water spud mud. Viscosity 30 to 36 as required for hole cleaning.

900' to 5100': Brine conditioned as necessary for control of viscosity. Weight 9.8 to 10. PH 9 to 10. Viscosity 32 to 36.

5100' to T.D.: Brine base drilling fluid conditioned as necessary for control of weight, viscosity, ph and water-loss.

7. AUXILIARY EQUIPMENT:

A mud logging trailer will be in use while drilling below 3000'.

8. TESTING, LOGGING, AND CORING PROGRAMS:

Drill stem tests will be made when well data indicate a test is warranted.

It is planned that electric logs will include CNL-FDC-GR and DLL-MSFL-SDL

Mud Logger survey will begin at 3000'.

No coring is planned.

9. ABNORMAL PRESSURES, TEMPERATURES, OR HYDROGEN SULFIDE GAS:

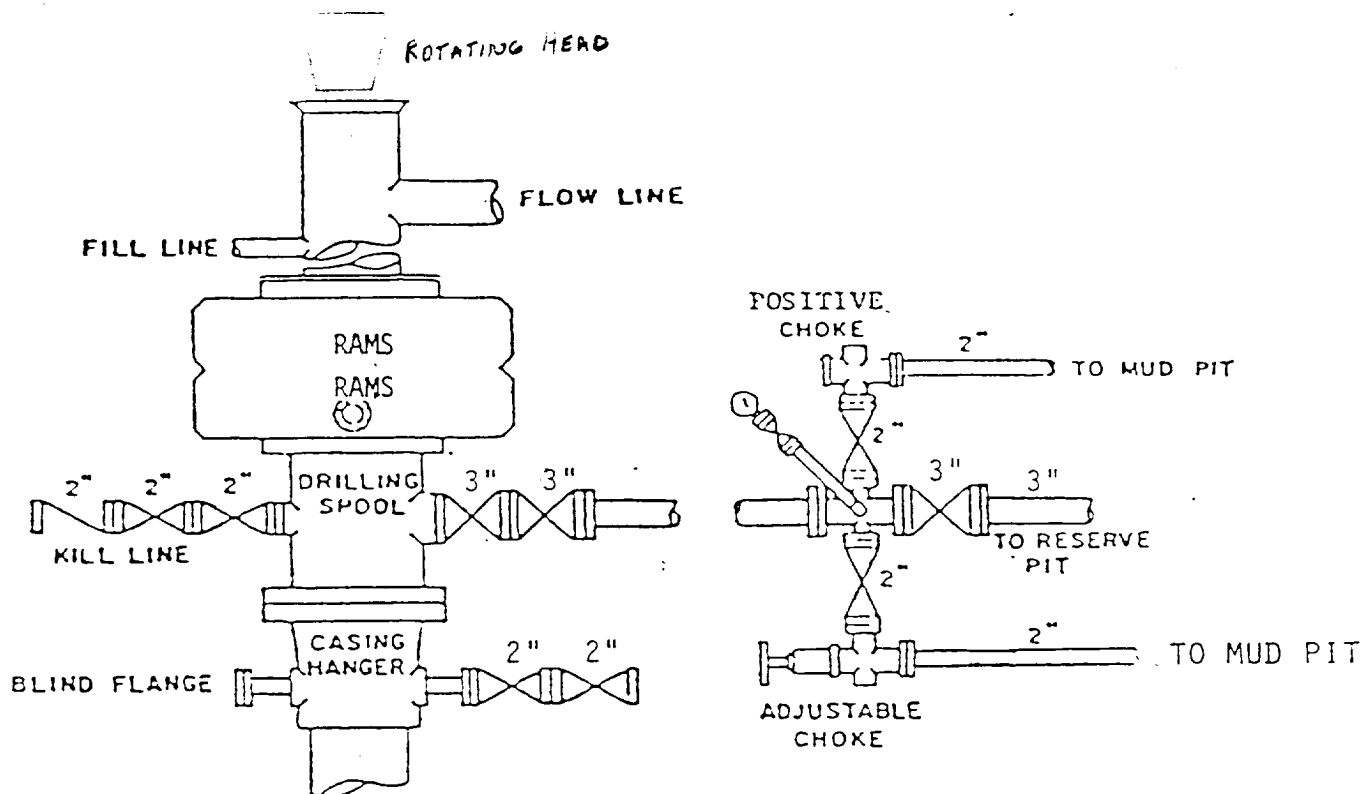
None anticipated.

Expected bottom hole pressure is approximately 3500 psi.
Expected bottom hole temperature is approximately 125 degrees Fahr.

Hydrogen Sulfide Drilling Operations Plan is attached.

10. ANTICIPATED STARTING DATE:

It is planned that operations will commence upon approval of this application, with drilling and completion operations lasting about 30 days.



BOP STACK

3000 PSI WORKING PRESSURE

BOP ARRANGEMENT