

Form 3160-5
(June 1990)

UNITED STATES
DEPARTMENT OF THE INTERIOR
BUREAU OF LAND MANAGEMENT

NM OIL ROSES, COMINGLING
APR 10 1993
TERMINAL, NEW MEXICO 86240

FORM APPROVED
Budget Bureau No. 1004-0135
Expires: March 31, 1993

SUNDRY NOTICES AND REPORTS ON WELLS

Do not use this form for proposals to drill or to deepen or reentry to a different reservoir.
Use "APPLICATION FOR PERMIT—" for such proposals

SUBMIT IN TRIPLICATE

1. Type of Well
☒ Oil Well ☐ Gas Well ☐ Other

2. Name of Operator
Samedan Oil Corporation

3. Address and Telephone No.
12600 Northborough, #250, Houston, Texas 77067

4. Location of Well (Footage, Sec., T., R., M., or Survey Description)
660 FWL & 2310 FSL, Sec 12, T-23S, R-37E, NMPM

5. Lease Designation and Serial No.
NMNM2244

6. If Indian, Allottee or Tribe Name

7. If Unit or CA, Agreement Designation

8. Well Name and No.
Branex Fed #1

9. API Well No.
30-025-32319

10. Field and Pool, or Exploratory Area
Cline Tubb/Lwr Pdk/Blby

11. County or Parish, State
Lea County, NM

12. CHECK APPROPRIATE BOX(s) TO INDICATE NATURE OF NOTICE, REPORT, OR OTHER DATA

TYPE OF SUBMISSION

- ☒ Notice of Intent
☐ Subsequent Report
☐ Final Abandonment Notice

TYPE OF ACTION

- ☐ Abandonment
☐ Recompletion
☐ Plugging Back
☐ Casing Repair
☐ Altering Casing
☒ Other Down Hole Commingle
☐ Change of Plans
☐ New Construction
☐ Non-Routine Fracturing
☐ Water Shut-Off
☐ Conversion to Injection
☐ Dispose Water

(Note: Report results of multiple completion on Well Completion or Recompletion Report and Log form.)

13. Describe Proposed or Completed Operations (Clearly state all pertinent details, and give pertinent dates, including estimated date of starting any proposed work. If well is directionally drilled, give subsurface locations and measured and true vertical depths for all markers and zones pertinent to this work.)*

Request for down hole commingling of Cline Tubb and Cline Lower Paddock/Blinebry.

See Attachment for details.

Subject to
LHO Approval
By State

14. I hereby certify that the foregoing is true and correct

Signed [Signature] Title Div Production Clerk Date 01/10/95

(This space for Federal or State office use)

Approved by [Signature] Title Petroleum Engineer Date 2/14/95

Conditions of approval, if any:

Title 18 U.S.C. Section 1001, makes it a crime for any person knowingly and willfully to make to any department or agency of the United States any false, fictitious or fraudulent statements or representations as to any matter within its jurisdiction.

*See Instruction on Reverse Side

SAMEDAN OIL CORPORATION

12600 NORTHBOROUGH, #250
HOUSTON, TEXAS 77067
(713) 876-6150 FAX (713) 876-6106

January 6, 1995

Oil Conservation Division
PO Box 2088
Santa Fe, New Mexico 87504-2088

Atten: William LeMay:

*RE: Down Hole Commingling
Branex Federal Well #1
Unit L, Sec. 12, T-23S, R-37E
Cline Tubb (Assoc)
Cline Lower Paddock/Blinebry*


Samedan Oil Corporation requests administrative approval for the down hole commingling of the above mentioned pools.

We have enclosed the following:

1. Area Plat showing ownership of offsetting leases.
2. Plat showing acreage dedicated to the well.
3. Names and addresses of offsetting operators and a copy of the letter to notify them and the United States Bureau of Land Management of our intention.
4. Division Form C-116 showing 24-hr productivity test from each zone.
5. Well History and Prognostication of future production.
6. Estimated BHP for each artificially lifted zone.
7. Fluid description of each zone.
8. Valves of production.
9. Recommended formula for allocation of production.

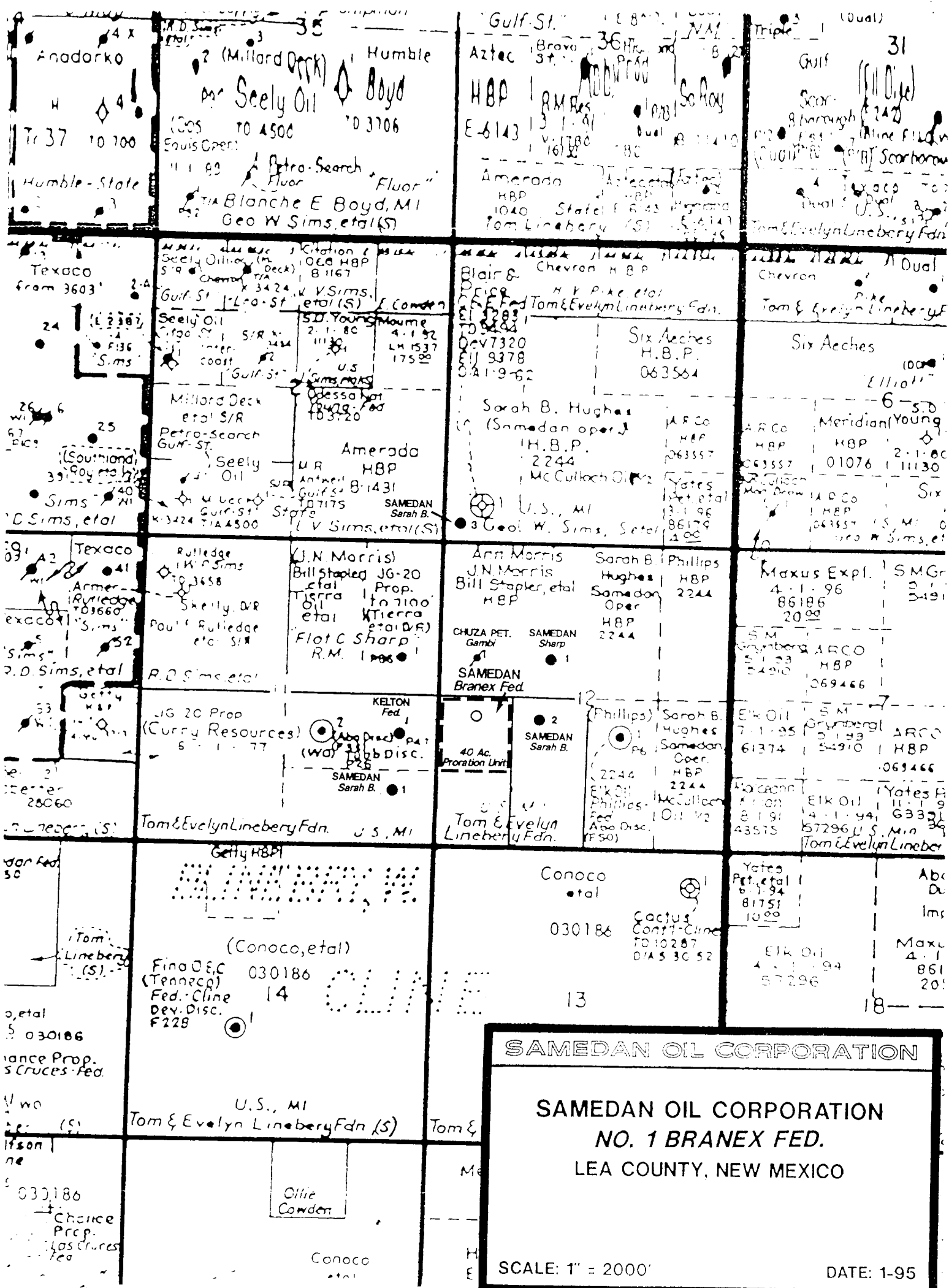
We appreciate your consideration in this matter. If you have any questions please call.

Thank you,


Judy Throneberry

attachments

xc: OCC - Hobbs District



SAMEDAN OIL CORPORATION

SAMEDAN OIL CORPORATION
NO. 1 BRANEX FED.
LEA COUNTY, NEW MEXICO

SCALE: 1" = 2000'
DATE: 1-95

DISTRICT I
P. O. Box 1980
Hobbs, NM 88240

OIL CONSERVATION DIVISION

DISTRICT II
P. O. Drawer DD
Artesia, NM 88210

P. O. Box 2088
Santa Fe, New Mexico 87504-2088

DISTRICT III
1000 Rio Brazos Rd
Aztec, NM 87410

WELL LOCATION AND ACREAGE DEDICATION PLAT

All distances must be from the outer boundaries of the section.

Operator SAMEDAN OIL CORPORATION			Lease BRANEX FED.		Well No. 1
Unit Letter L	Section 12	Township 23 SOUTH	Range 37 EAST, N.M.P.M.	County LEA	
Actual Footage Location of Well 2310 feet from the SOUTH line and 660 feet from the WEST line					
Ground Level Elev. 3281'	Producing Formation Cline Lower Padk/Blby		Pool Lower Paddock/Blinebry		40 Acres

1. Outline the acreage dedicated to the subject well by colored pencil or hatchure marks on the plat below.
2. If more than one lease is dedicated to the well, outline each and identify the ownership thereof (both as to working interest and royalty).
3. If more than one lease of different ownership is dedicated to the well, have the interest of all the owners been consolidated by communitization, unitization, forced-pooling, etc?
☐ Yes ☐ No If answer is "yes", type of consolidation _____
If the answer is "no", list the owners and tract descriptions which have actually been consolidated. (Use the reverse side of this form if necessary.) _____
No allowable will be assigned to the well until all interests have been consolidated (by communitization, unitization, forced-pooling, or otherwise) or until a non-standard unit, eliminating such interest, has been approved by the division.

OPERATOR CERTIFICATION

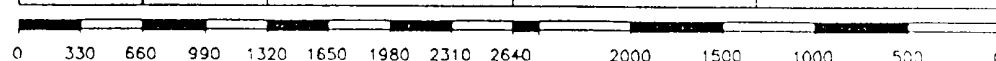
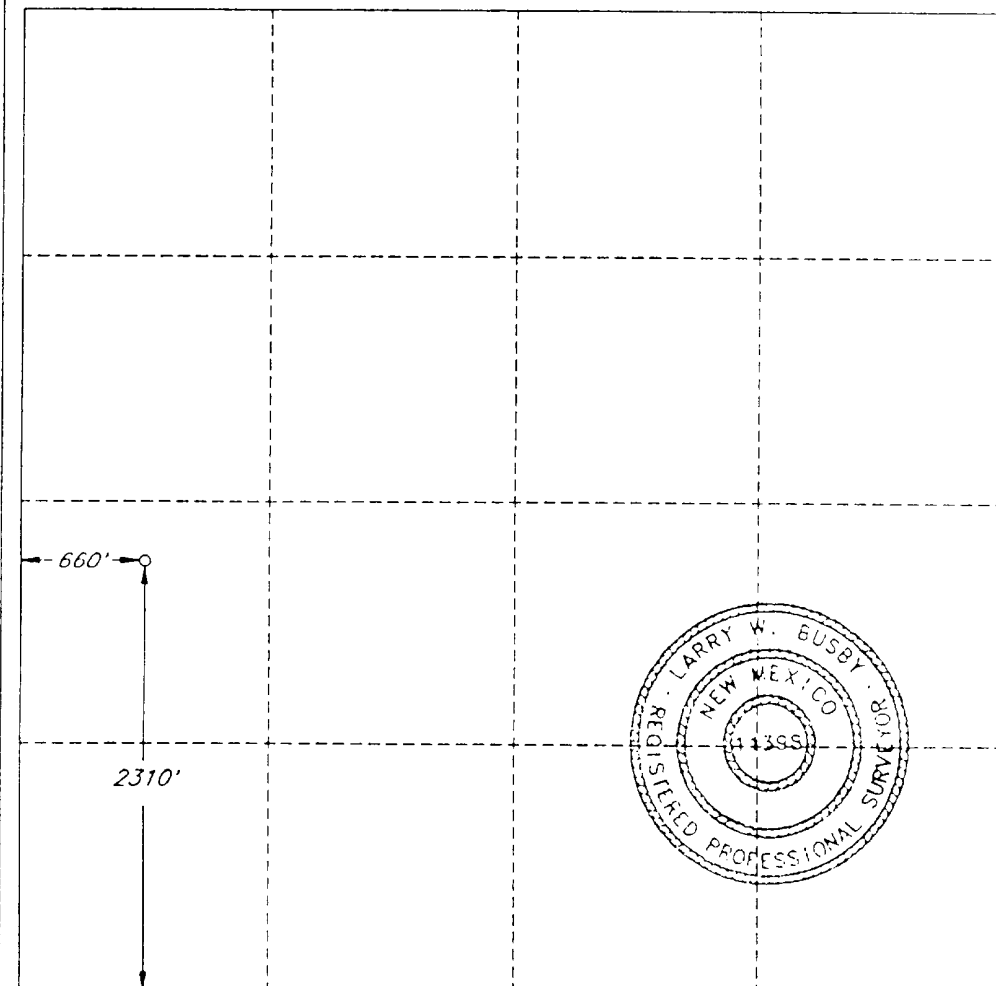
I hereby certify that the information herein is true and complete to the best of my knowledge and belief.

Signature
Judy Throneberry
Printed Name
Judy Throneberry
Position
Div Production Clerk
Company
Samedan Oil Corporation
Date
01/06/95

SURVEYOR CERTIFICATION

I hereby certify that the well location shown on this plat was plotted from field notes of actual surveys made by me or under my supervision, and that the same is true and correct to the best of my knowledge and belief.

Date Surveyed
SEPTEMBER 28, 1993
Signature and Seal of Professional Surveyor
Larry W. Busby
Certificate No.
LARRY W. BUSBY R.P.S. #11398
LWE / 88302-1 / 45SE



DISTRICT I
P. O. Box 1980
Hobbs, NM 88240

DISTRICT II
P. O. Drawer DD
Artesia, NM 88210

DISTRICT III
1000 Rio Brazos Rd
Aztec, NM 87410

OIL CONSERVATION DIVISION

P. O. Box 2088
Santa Fe, New Mexico 87504-2088

WELL LOCATION AND ACREAGE DEDICATION PLAT

All distances must be from the outer boundaries of the section.

Operator SAMEDAN OIL CORPORATION			Lease BRANEX FED.		Well No. 1
Unit Letter L	Section 12	Township 23 SOUTH	Range 37 EAST, N.M.P.M.	County LEA	
Actual Footage Location of Well 2310 feet from the SOUTH line and 660 feet from the WEST line					
Ground Level Elev. 3281'	Producing Formation Cline Tubb (Assoc)		Pool Tubb (Assoc)		Acres 40

1. Outline the acreage dedicated to the subject well by colored pencil or hectare marks on the plat below.
2. If more than one lease is dedicated to the well, outline each and identify the ownership thereof (both as to working interest and royalty).
3. If more than one lease of different ownership is dedicated to the well, have the interest of all the owners been consolidated by communitization, unitization, forced-pooling, etc?
☐ Yes ☐ No If answer is "yes", type of consolidation _____
If the answer is "no", list the owners and tract descriptions which have actually been consolidated. (Use the reverse side of this form if necessary.) _____
No allowable will be assigned to the well until all interests have been consolidated (by communitization, unitization, forced-pooling, or otherwise) or until a non-standard unit, eliminating such interest, has been approved by the division.

OPERATOR CERTIFICATION

I hereby certify that the information herein is true and complete to the best of my knowledge and belief.

Signature Judy Throneberry
Printed Name Judy Throneberry
Position Div Production Clerk
Company Samedan Oil Corporation
Date 01/06/95

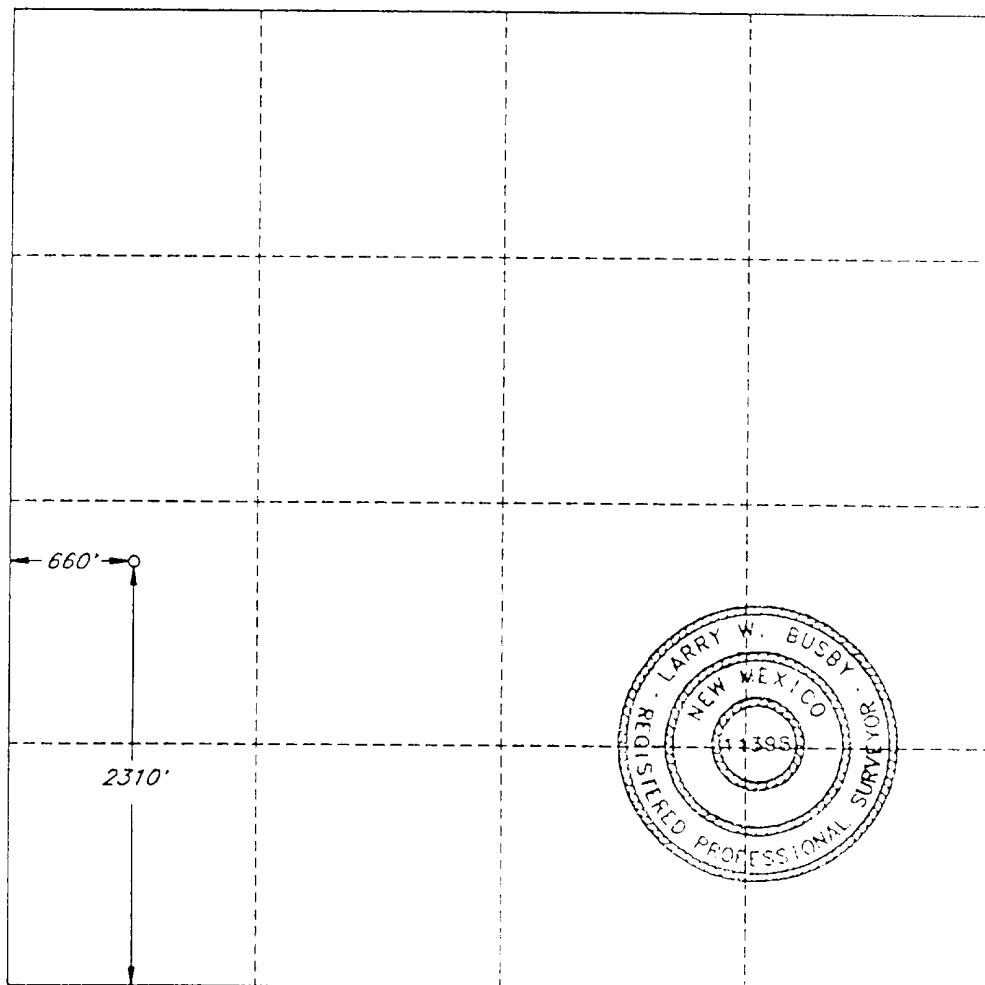
SURVEYOR CERTIFICATION

I hereby certify that the well location shown on this plat was plotted from field notes of actual surveys made by me or under my supervision, and that the same is true and correct to the best of my knowledge and belief.

Date Surveyed
SEPTEMBER 28, 1993

Signature and Seal of
Professional Surveyor

Certificate No.
LARRY W. BUSBY R.P.S. #11398
LWE / 99300-1 / 45SE



0 330 660 990 1320 1650 1980 2310 2640 2000 1500 1000 500 0

OFFSET OPERATORS AND WELLS

CHUZA OPERATING
PO BOX 953
MIDLAND, TEXAS 79702
(915) 686-8985

KELTON OPERATING
PO BOX 276
ANDREWS, TEXAS 79714
(915) 523-6535

NOTIFICATION:

BUREAU OF LAND MANAGEMENT
PO BOX 1778
CARLSBAD, NEW MEXICO 88221-1778

SAMEDAN OIL CORPORATION

12600 NORTHBOROUGH, #250

HOUSTON, TEXAS 77067

(713) 876-6150 FAX (713) 876-6106

January 6, 1995

**Chuza Operating
PO Box 953
Midland, Texas 79702**

**RE Down Hole Commingling
Branex Federal #1
Unit L, Sec 12, T-23S, R-37E, Lea County
Cline Tubb (Assoc) Zone
Cline Lower Paddock/Blinbry Zone**

This is to notify you as an offset operator of the Branex Federal #1, that we are applying for administrative approval for down hole commingling of Tubb (Assoc) and Lower Paddock/Blinbry production in the above mentioned well.

If you have any questions please contact Gary Hendricks at (713) 876-6150. If you have no objections please sign and return the enclosed letter to the New Mexico Oil Conservation Commission in the self-addressed stamped envelope as soon as possible to expedite matters. Any objections must be filed with the Commission within 20 days of the date of this letter.

Thank you for your time and consideration in this matter.

Sincerely



**Judy Throneberry
Division Production Clerk**

attachments

**xc: Oil Conservation Division
Santa Fe, NM**

SAMEDAN OIL CORPORATION

**12600 NORTHBOROUGH, #250
HOUSTON, TEXAS 77067
(713) 876-6150 FAX (713) 876-6106**

January 6, 1995

**Kelton Operating Company
PO Box 276
Andrews, Texas 79714**

**RE Down Hole Commingling
 Branex Federal #1
 Unit L, Sec 12, T-23S, R-37E, Lea County
 Cline Tubb (Assoc) Zone
 Cline Lower Paddock/Blincbry Zone**

This is to notify you as an offset operator of the Branex Federal #1, that we are applying for administrative approval for down hole commingling of Tubb (Assoc) and Lower Paddock/Blincbry production in the above mentioned well.

If you have any questions please contact Gary Hendricks at (713) 876-6150. If you have no objections please sign and return the enclosed letter to the New Mexico Oil Conservation Commission in the self-addressed stamped envelope as soon as possible to expedite matters. Any objections must be filed with the Commission within 20 days of the date of this letter.

Thank you for your time and consideration in this matter.

Sincerely



**Judy Throneberry
Division Production Clerk**

attachments

**xc: Oil Conservation Division
Santa Fe, NM**

SAMEDAN OIL CORPORATION

12600 NORTHBOROUGH, #250
HOUSTON, TEXAS 77067
(713) 876-6150 FAX (713) 876-6106

January 6, 1995

Bureau of Land Management
PO Box 1778
Carlsbad, NM 88221-1778

Gentlemen:

*RE: Down Hole Commingling
Branex Federal Well #1
Unit L, Sec 12, T-23S, R-37E, Lea County, NM
Cline Tubb (Assoc) Zone
Cline Lower Paddock/Blinbry Zone*

This is to notify you of our application for administrative approval for down hole commingling of production in the above mentioned zones for the Branex Federal Well #1. I have attached a copy of the application.

If you have any questions please contact Gary Hendricks at (713) 876-6150.

Thank you,



Judy Throneberry
Division Production Clerk

attachments

xc: Oil Conservation Division
Santa Fe, NM

Submit 2 copies to Appropriate
District Office.
DISTRICT I
P.O. Box 1980, Hobbs, NM 88240
DISTRICT II
P.O. Drawer DD, Artesia, NM 88210
DISTRICT III
1000 Rio Brazos Rd., Aztec, NM 87410

State of New Mexico
Energy, Minerals and Natural Resources Department

Form C-116
Revised 1/1

OIL CONSERVATION DIVISION

P.O. Box 2088
Santa Fe, New Mexico 87504-2088

GAS - OIL RATIO TEST

Operator 020153 Samedan Oil Corporation		Pod 12411 Cline Lower Paddock/Blinberry		County Lea											
Address 12600 Northborough, #250, Houston, Texas 77067		TYPE OF TEST - (X)		Completion <input type="checkbox"/> Special <input checked="" type="checkbox"/>											
LEASE NAME	WELL NO.	LOCATION U S T R		DATE OF TEST	% STATUS	CHOKE SIZE	TBG. PRESS.	DAILY ALLOW- ABLE	LENGTH OF TEST HOURS	PROD. DURING TEST WATER BBL'S		GRAV. OIL	OIL BBL'S	GAS MCF	GAS IN CUF
013307 Branex Federal	1	L	12	23S	37E	01/05/95	F	24/64	185	24	4	40.2	8	194	242

Instructions:

During gas-oil ratio test, each well shall be produced at a rate not exceeding the top unit allowable for the pool in which well is located by more than 25 percent. Operator is encouraged to take advantage of this 25 percent tolerance in order that well can be assigned increased allowables when authorized by the Division.

Gas volumes must be reported in MCF measured at a pressure base of 15.025 psia and a temperature of 60° F. Specific gravity base will be 0.60.

Report casing pressure in lieu of tubing pressure for any well producing through casing.

(See Rule 301, Rule 1116 & appropriate pool rules.)

I hereby certify that the above information is true complete to the best of my knowledge and belief.

Signature

Judy Throneberry

Printed name and title
Judy Throneberry, Div Production Clerk

Date
01/06/95

713-876-6150

Telephone Number

Submit 2 copies to Appropriate District Office.

State of New Mexico
Energy, Minerals and Natural Resources Department

Form C-116
Revised 1/1/89

OIL CONSERVATION DIVISION

DISTRICT I
P.O. Box 1980, Hobbs, NM 88240
DISTRICT II
P.O. Drawer DD, Artesia, NM 88210
DISTRICT III
1000 Rio Brazos Rd., Aztec, NM 87410

P.O. Box 2088
Santa Fe, New Mexico 87504-2088

GAS - OIL RATIO TEST

Operator 020153 - Samedan Oil Corporation		Pool 12440 Cline Tubb (Assoc)		County Lea												
Address 12600 Northborough, #250, Houston, Texas 77067		TYPE OF TEST - (X)		Schedulid <input type="checkbox"/>		Completion <input type="checkbox"/>		Special <input checked="" type="checkbox"/>								
LEASE NAME	WELL NO.	LOCATION				DATE OF TEST	SIZE OF TEST	CHOKE SIZE	TBG. PRESS.	DAILY ALLOW-ABLE	LENGTH OF TEST HOURS	WATER BRLS	PROD. DURING TEST		GAS - OIL RATIO CU FT/BR	
		U	S	T	R								GRAV. OIL	OL BRLS		GAS MCF
013307 Branex Federal	1	L	12	23S	37E	05/04/94	F	16/64	200		24	30	39.6	5	170	34000
The Cline Tubb (Assoc) zone has been TA since 7/94.																

Instructions:

During gas-oil ratio test, each well shall be produced at a rate not exceeding the top unit allowable for the pool in which the well is located by more than 25 percent. Operator is encouraged to take advantage of this 25 percent tolerance in order that the well can be assigned increased allowables when authorized by the Division.

Gas volumes must be reported in MCF measured at a pressure base of 15.025 psia and a temperature of 60° F. Specific gravity base will be 0.60.

Report casing pressure in lieu of tubing pressure for any well producing through casing.

(See Rule 301, Rule 1116 & appropriate pool rules.)

I hereby certify that the above information is true and complete to the best of my knowledge and belief.

Signature Judy Throneberry

Printed name and title
Judy Throneberry, Div Production Clerk

Date
01/06/95

713-876-6150

Telephone No.

Application to Downhole Commingle
Samedan Oil Corporation
Branex Federal #1
Unit letter L, Section 12, T-23-S, R-37-E. Lea County, New Mexico

5. WELL HISTORY
See Well Configuration Sketches.

PROGNOSTICATION OF FUTURE PRODUCTION

Production decline rates for both zones Tubb and Lower Paddock/Blindbry can be assumed to be similar. Estimated monthly production for 1995 is submitted below based on latest production rates declined 50% annually. These declines were derived from other Samedan operated producing wells in the Cline Pools.

1995 ESTIMATE PRODUCTION

	TUBB			LOWER PADDOCK/BLINEBRY		
	OIL	WATER	GAS	OIL	WATER	GAS
Jan	150	150	5100	300	150	6000
Feb	142	150	4814	283	150	5663
Mar	134	150	4543	267	150	5345
Apr	126	150	4289	252	150	5045
May	119	150	4048	238	150	4762
Jun	113	150	3821	225	150	4495
Jul	106	150	3606	212	150	4243
Aug	100	150	3404	200	150	4005
Sep	95	150	3213	189	150	3780
Oct	89	150	3033	178	150	3567
Nov	84	150	2862	168	150	3367
Dec	80	150	2702	159	150	3178

ESTIMATED COMBINED PRODUCTION

	OIL	WATER	GAS
Jan	450	30	11100
Feb	425	30	10477
Mar	401	30	9888
Apr	378	30	9334
May	357	30	8810
Jun	338	30	8581
Jul	318	30	7849
Aug	300	30	7409
Sep	284	30	6993
Oct	267	30	6600
Nov	252	30	6229
Dec	239	30	5880

Application to Downhole Commingle
Samedan Oil Corporation
Branex Federal #1
Unit letter L, Section 12, T-23-S, R-37-E. Lea County, New Mexico

5. WELL HISTORY
See Well Configuration Sketches.

PROGNOSTICATION OF FUTURE PRODUCTION

Production decline rates for both zones Tubb and Lower Paddock/Blinebry can be assumed to be similar. Estimated monthly production for 1995 is submitted below based on latest production rates declined 50% annually. These declines were derived from other Samedan operated producing wells in the Cline Pools.

1995 ESTIMATE PRODUCTION

	TUBB			LOWER PADDOCK/BLINEBRY		
	OIL	WATER	GAS	OIL	WATER	GAS
Jan	150	150	5100	300	150	6000
Feb	142	150	4814	283	150	5663
Mar	134	150	4543	267	150	5345
Apr	126	150	4289	252	150	5045
May	119	150	4048	238	150	4762
Jun	113	150	3821	225	150	4495
Jul	106	150	3606	212	150	4243
Aug	100	150	3404	200	150	4005
Sep	95	150	3213	189	150	3780
Oct	89	150	3033	178	150	3567
Nov	84	150	2862	168	150	3367
Dec	80	150	2702	159	150	3178

ESTIMATED COMBINED PRODUCTION

	OIL	WATER	GAS
Jan	450	30	11100
Feb	425	30	10477
Mar	401	30	9888
Apr	378	30	9334
May	357	30	8810
Jun	338	30	8581
Jul	318	30	7849
Aug	300	30	7409
Sep	284	30	6993
Oct	267	30	6600
Nov	252	30	6229
Dec	239	30	5880

Samedan Oil Corporation
Configuration After Commingling

Branex Federal #1		2310' FSL and 660' FNL	
Well Name		Section 12, T-23-S, R-37-E	
Lea, New Mexico		Location	
County, State		Elevation	
		Apr-94	
13 3/8" 48# H-40 casing at 892'.		Perforate the Tubb as follows:	
Cemented with 400 sacks Class C		6102-05 (4 holes), 6108-15 (8 holes),	
with 4% gel and 2% CaCl2. Tail in		6132-36 (5 holes), 6141, 6143.	
with 200 sacks Class C with 2%		6146-48 (3 holes), 6154-60 (7 holes)	
CaCl2. Circ 45 sacks to pit		6165-69 (4 holes) Total 33 holes	
		Acidize with 1500 gals 15% NEFE	
		HCL and 60 balls at 3000 psi at 4	
		BPM. No ball action	
		Frac down the casing with 28000	
		gals Spectra-Frac G-3000 with	
		84000# 20/40 Ottawa sand and	
		16000# 20/40 CRS sand as follows:	
		Pump 10000 gallons pad	
		Pump 3000 gals with 2 ppg	
		Pump 4000 gals with 4 ppg	
		Pump 5000 gals with 6 ppg	
		Pump 4000 gals with 8 ppg	
		Pump 2000 gals with 8 ppg CRS	
		Average rate 20 BPM at 2000 psi.	
		Flow test Tubb zone for one week	
		Potential test dated 5-1-94 flowing	
		2 BOPD, 23 BWPD and 170 MCFPD	
		at 180 psi on a 16/64" choke.	
		Set plug in top of Lokset packer at	
		5995'.	
		May-94	
		Perforate the Paddock as follows:	
		5601-04 (4 holes), 5606-08 (3 holes),	
		5612-14 (3 holes), 5617-19 (3 holes)	
		5622-32 (11 holes), 5640, 5641	
		Total 26 holes	
		Acidize with 1500 gallons 15% NEFE	
		HCL with 40 balls at 4 BPM and	
		2300 psi. No ball action.	
Well will produce commingled from		5601 Frac with 22000 gallons 30# Borate	
the Blinebry and Tubb reservoirs		gel containing 76000# 20/40 Ottawa	
utilizing rod pumping artificial lift.		sand and 16000# CRS sand as	
		follows:	
		5641 Pump 8000 gallons gelled pad	
		Pump 1000 gals with 2 ppg	
		Pump 2000 gals with 4 ppg	
		Pump 3000 gals with 6 ppg	
		5995 Pump 6000 gals with 8 ppg	
		Pump 2000 gals with 8 ppg CRS	
		6102 Average rate 15 BPM at 900 psi.	
		Well kicked off flowing and	
		potentialized on 5-10-94 flowing	
		6168 30 BOPD, 110 BWPD and 706	
		MCFPD.	
5 1/2" 15.5# J-55 casing at 6300'.			
Cemented with 1150 sacks Class C			
with 16% gel, 5# salt, 1/4# flocele			
and 0.4% CFR3. Pump 450 sacks			
Class C Light with 5#/sk salt, 1/4#			
flocele and 0.4% Halad 9. Tail in			
with 250 sacks Class H 50/50 Poz			
with 3#/sk KCL and 0.4% Halad 9.			
Circ 95 sacks to the pit.			

Samedan Oil Corporation
 Branex Federal #1
 Summary of Production

Branex Fed #1			
Blinebry			
Month/Yr	BOPM	MCFPM	BWPM
May-94	95	2360	615
Jun-94	526	6146	253
Jul-94	788	12299	296
Aug-94	551	10928	193
Sep-94	426	8758	145
Oct-94	393	7800	166
Totals	2779	48291	1668