

Submit to Appropriate
District Office
State Lease - 4 copies
2/3rds Lease - 3 copies

State of New Mexico
Energy, Minerals and Natural Resources Department

Form C-102
Revised 1-1-89

OIL CONSERVATION DIVISION

P.O. Box 2088

Santa Fe, New Mexico 87504-2088

DISTRICT I

P.O. Box 1980, Hobbs, NM 88240

DISTRICT II

P.O. Drawer DD, Artesia, NM 88210

DISTRICT III

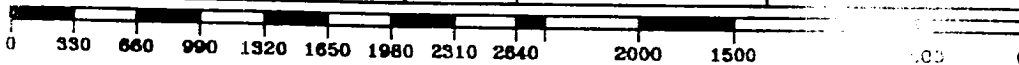
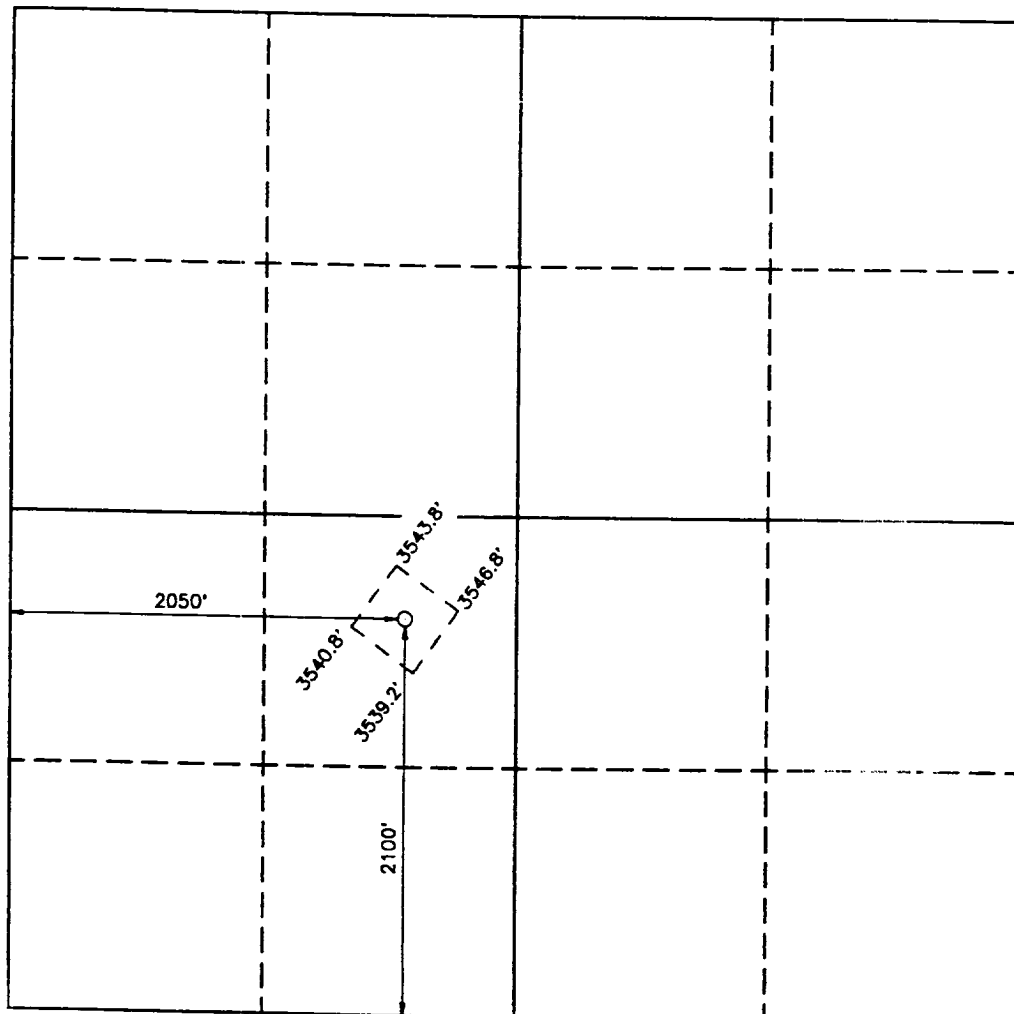
1000 Rio Brazos Ed., Artec, NM 87410

WELL LOCATION AND ACREAGE DEDICATION PLAT

All Distances must be from the outer boundaries of the section

Operator ENRON OIL & GAS			Lease MESA VERDE 6 FEDERAL		Well No. 6
Unit Letter K	Section 6	Township 24 SOUTH	Range 32 EAST	County LEA	
Actual Footage Location of Well: 2100 feet from the SOUTH line and 2050 feet from the WEST line					
Ground Level Elev. 3548.3'	Producing Formation Bone Spring		Pool Mesa Verde	Dedicated Acreage: 40 Acres	

- Outline the acreage dedicated to the subject well by colored pencil or hachure marks on the plat below.
- If more than one lease is dedicated to the well, outline each and identify the ownership thereof (both as to working interest and royalty).
- If more than one lease of different ownership is dedicated to the well, have the interest of all owners been consolidated by communitization, unitization, force-pooling, etc.?
☐ Yes ☐ No If answer is "yes" type of consolidation _____
If answer is "no" list of owners and tract descriptions which have actually been consolidated. (Use reverse side of this form necessary.)
No allowable will be assigned to the well unit all interests have been consolidated (by communitization, unitization, forced-pooling, otherwise) or until a non-standard unit, eliminating such interest, has been approved by the Division.



OPERATOR CERTIFICATION

I hereby certify the the information
contained herein is true and complete to the
best of my knowledge and belief.

Signature
Betty Gildon
Printed Name
Betty Gildon
Position
Regulatory Analyst
Company
Enron Oil & Gas Company
Date
12/12/94

SURVEYOR CERTIFICATION

I hereby certify that the well location shown
on this plat was plotted from field notes of
actual surveys made by me or under my
supervision, and that the same is true and
correct to the best of my knowledge and
belief.

Date Surveyed
NOVEMBER 19, 1993

Signature & Seal of
Professional Surveyor
GARY L. JONES
NEW MEXICO
7977
Certificate No. JOHN W. WEST, 878
RONALD S. JOHNSON, 3239
GARY L. JONES, 7977
95-11-2359