

UNITED STATES
DEPARTMENT OF THE INTERIOR
BUREAU OF LAND MANAGEMENT

N.M. OIL CO. COMMISSION
P.O. BOX 1000
HOBBES, NEW MEXICO 87001
FORM APPROVED
OMB NO. 1004-0136
Expires: February 28, 1995

30-025-32397

APPLICATION FOR PERMIT TO DRILL OR DEEPEN

1a. TYPE OF WORK

DRILL ☒

DEEPEN ☐

b. TYPE OF WELL

OIL WELL ☒

GAS WELL ☐

OTHER ☐

SINGLE ZONE ☒

MULTIPLE ZONE ☐

2. NAME OF OPERATOR

Enron Oil & Gas Company

3. ADDRESS AND TELEPHONE NO.

P. O. Box 2267, Midland, Texas 79702

4. LOCATION OF WELL (Report location clearly and in accordance with any State requirements.)*

At surface

2100' FSL & 1850' FWL

At proposed prod. zone

2100' FSL & 1850' FWL

14. DISTANCE IN MILES AND DIRECTION FROM NEAREST TOWN OR POST OFFICE*

35 miles SE of Carlsbad

10. DISTANCE FROM PROPOSED*

LOCATION TO NEAREST PROPERTY OR LEASE LINE, FT. 1850

(Also to nearest drig. unit line, if any) 530

18. DISTANCE FROM PROPOSED LOCATION*

TO NEAREST WELL, DRILLING, COMPLETED, OR APPLIED FOR, ON THIS LEASE, FT. 1455' to #2

16. NO. OF ACRES IN LEASE

640

19. PROPOSED DEPTH

8750

17. NO. OF ACRES ASSIGNED TO THIS WELL

40

20. ROTARY OR CABLE TOOLS

Rotary

21. ELEVATIONS (Show whether DF, RT, GR, etc.)

3547.3' GR : 3548.3'

Carlsbad Controlled Water Basin

22. APPROX. DATE WORK WILL START*

December 15, 1993

23.

PROPOSED CASING AND CEMENTING PROGRAM

SIZE OF HOLE	GRADE, SIZE OF CASING	WEIGHT PER FOOT	SETTING DEPTH	QUANTITY OF CEMENT
14-3/4	11-3/4 H-40 A	ST&C 42#	600	275 sx CIRCULATED
11	8-5/8 J-55 L	T&C 32#	4600	725 sx CIRCULATED
7-5/8	5-1/2 J-55 L	T&C 17#	8750	350 sx TOC est at 3500'.

Acreage is dedicated.

Approval Subject to
General Requirements and
Special Stipulations
Attached

IN ABOVE SPACE DESCRIBE PROPOSED PROGRAM: If proposal is to deepen, give data on present productive zone and proposed new productive zone. If proposal is to drill or deepen directionally, give pertinent data on subsurface locations and measured and true vertical depths. Give blowout preventer program, if any.

24.

SIGNED

Betty Gildon

TITLE Regulatory Analyst

DATE 11/9/93

(This space for Federal or State office use)

PERMIT NO.

APPROVAL DATE

Application approval does not warrant or certify that the applicant holds legal or equitable title to those rights in the subject lease which would entitle the applicant to conduct operations thereon.

CONDITIONS OF APPROVAL, IF ANY:

APPROVED BY

15/ Ron Dunton

TITLE

(for) AREA MANAGER

DATE

*See Instructions On Reverse Side

UNITED STATES
DEPARTMENT OF THE INTERIOR
BUREAU OF LAND MANAGEMENT

FORM APPROVED
Budget Bureau No. 1004-0135
Expires: March 31, 1993

SUNDRY NOTICES AND REPORTS ON WELLS

Do not use this form for proposals to drill or to deepen or reentry to a different reservoir.
Use "APPLICATION FOR PERMIT—" for such proposals

5. Lease Designation and Serial No.
NM 77064

6. If Indian, Allottee or Tribe Name

SUBMIT IN TRIPLICATE

1. Type of Well

☒ Oil Well ☐ Gas Well ☐ Other

2. Name of Operator

Enron Oil & Gas Company

3. Address and Telephone No.

P. O. Box 2267, Midland, Texas 79702

4. Location of Well (Footage, Sec., T., R., M., or Survey Description)

2100' FSL & 2050' FWL
Sec 6, T24S, R32E

7. If Unit or CA, Agreement Designation

8. Well Name and No.

Mesa Verde 6 Federal #6

9. API Well No.

10. Field and Pool, or Exploratory Area

Und. Delaware

11. County or Parish, State

Lea County, NM

12. CHECK APPROPRIATE BOX(s) TO INDICATE NATURE OF NOTICE, REPORT, OR OTHER DATA

TYPE OF SUBMISSION

☐ Notice of Intent

☒ Subsequent Report

☐ Final Abandonment Notice

TYPE OF ACTION

☐ Abandonment

☐ Recompletion

☐ Plugging Back

☐ Casing Repair

☐ Altering Casing

☒ Other To amend location

☐ Change of Plans

☐ New Construction

☐ Non-Routine Fracturing

☐ Water Shut-Off

☐ Conversion to Injection

☐ Dispose Water

(Note: Report results of multiple completion on Well Completion or Recompletion Report and Log form.)

13. Describe Proposed or Completed Operations (Clearly state all pertinent details, and give pertinent dates, including estimated date of starting any proposed work. If well is directionally drilled, give subsurface locations and measured and true vertical depths for all markers and zones pertinent to this work.)*

Location moved 200' East to avoid raptor's nest.

RECEIVED
DEC 8 11 23 AM '93

14. I hereby certify that the foregoing is true and correct

Signed Betty Gildon Betty Gildon

Title Regulatory Analyst

Date 12/8/93

(This space for Federal or State office use)

Approved by _____
Conditions of approval, if any:

Title _____

Date _____

Title 18 U.S.C. Section 1001, makes it a crime for any person knowingly and willfully to make to any department or agency of the United States any false, fictitious or fraudulent statements or representations as to any matter within its jurisdiction.

*See Instruction on Reverse Side

Submit to Appropriate
District Office
State Lease - 4 copies
Fee Lease - 3 copies

State of New Mexico
Energy, Minerals and Natural Resources Department

Form C-102
Revised 1-1-89

OIL CONSERVATION DIVISION

P.O. Box 2088
Santa Fe, New Mexico 87504-2088

DISTRICT I

P.O. Box 1980, Hobbs, NM 86240

DISTRICT II

P.O. Drawer DD, Artesia, NM 88210

DISTRICT III

1000 Rio Brazos Rd., Artec, NM 87410

WELL LOCATION AND ACREAGE DEDICATION PLAT

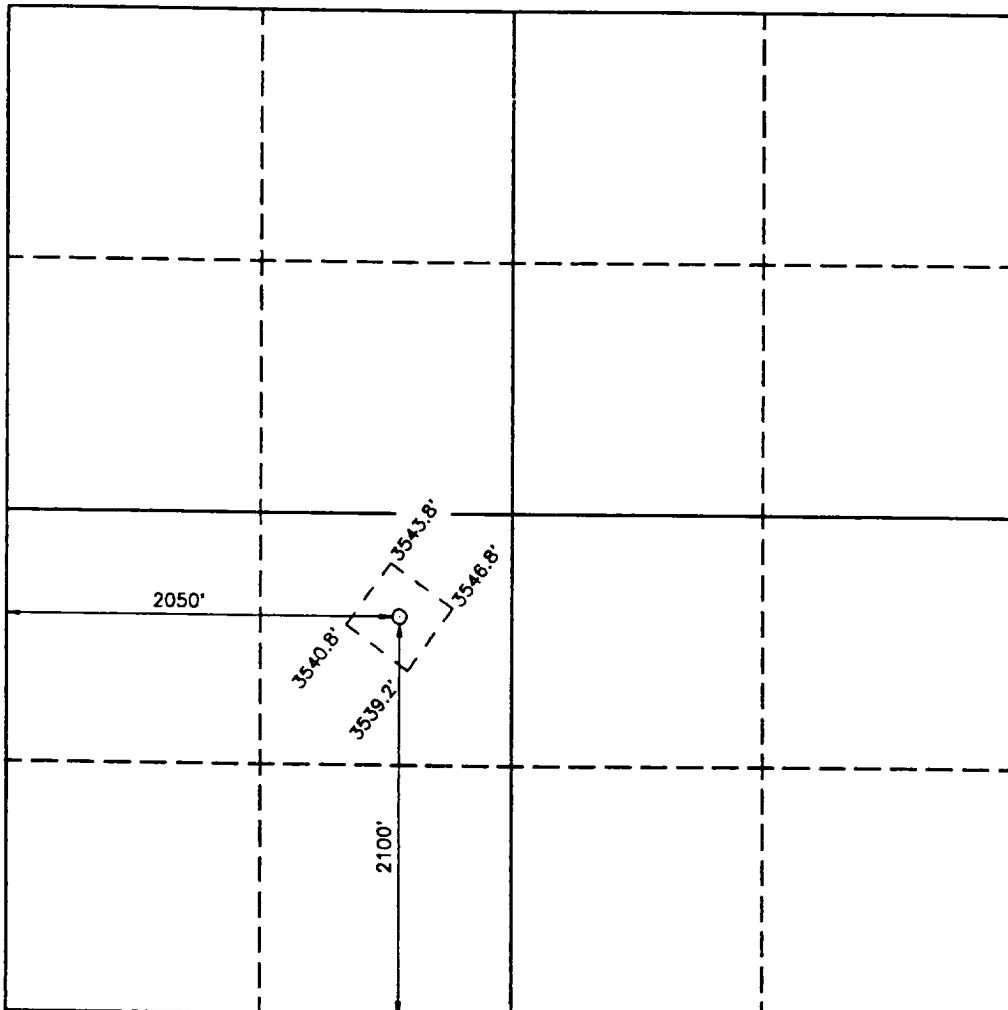
All Distances must be from the outer boundaries of the section

Operator ENRON OIL & GAS COMPANY			Lease MESA VERDE 6 FEDERAL		Well No. 6
Unit Letter K	Section 6	Township 24 SOUTH	Range 32 EAST	NMPM	County LEA
Actual Footage Location of Well: 2100 feet from the SOUTH line and 2050 feet from the WEST line					
Ground Level Elev. 3548.3'	Producing Formation Delaware	Pool Undesignated		Dedicated Acreage: 40 Acres	

1. Outline the acreage dedicated to the subject well by colored pencil or hachure marks on the plat below.
2. If more than one lease is dedicated to the well, outline each and identify the ownership thereof (both as to working interest and royalty).
3. If more than one lease of different ownership is dedicated to the well, have the interest of all owners been consolidated by communitization, unitization, force-pooling, etc.?
☐ Yes ☐ No If answer is "yes" type of consolidation _____

If answer is "no" list of owners and tract descriptions which have actually been consolidated. (Use reverse side of this form necessary.)

No allowable will be assigned to the well unit all interests have been consolidated (by communitization, unitization, forced-pooling, otherwise) or until a non-standard unit, eliminating such interest, has been approved by the Division.



OPERATOR CERTIFICATION

I hereby certify the the information contained herein is true and complete to the best of my knowledge and belief.

Signature
Betty Gildon
Printed Name
Betty Gildon
Position
Regulatory Analyst
Company
Enron Oil & Gas Company
Date
11/24/93

SURVEYOR CERTIFICATION

I hereby certify that the well location shown on this plat was plotted from field notes of actual surveys made by me or under my supervision, and that the same is true and correct to the best of my knowledge and belief.

Date Surveyed
NOVEMBER 19, 1993

Signature & Seal of
Professional Surveyor

Certificate No. JOHN W. JONES, 878
RONALD J. JONES, 3238
GARY L. JONES, 7977
95-11-2359

DRILLING PROGRAM

Enron Oil & Gas Company
Mesa Verde 6 Federal No. 6
2100' FSL & ~~4850'~~ 4650' FWL
Sec. 6, T24S, R32E
Lea County, New Mexico

1. Geologic Name of Surface Formation:

Permian

2. Estimated Tops of Important Geologic Markers:

Rustler	930'
Delaware	4600'
Bell Canyon	4580'
Cherry Canyon	5650'
Bone Spring	8500'

3. Estimated Depths of Anticipated Fresh Water, Oil or Gas:

Delaware	4600'	Water & Oil
----------	-------	-------------

No other formations are expected to give up oil, gas or fresh water in measurable quantities. The surface fresh water sands will be protected by setting 11-3/4" casing at 600' and circulating cement back to surface, and 8-5/8" casing will be set at 4600' with cement circulating back to surface.

Enron Oil & Gas Company
Mesa Verde 6 Federal No. 6
2100' FSL & 1850' FWL
Sec. 6, T24S, R32E
Lea County, New Mexico

4. Casing Program:

<u>Hole Size</u>	<u>Interval</u>	<u>OD csg</u>	<u>Weight Grade Jt. Cond. Type</u>
14-3/4	0 - 600'	11-3/4	42# H-40 A ST&C
11	0 - 4600'	8-5/8	32# J-55 LT&C
7-5/8	0 - 8750'	5-1/2	17# J-55 LT&C

Cementing Program:

11-3/4" Surface casing: Cement to surface with 275 sx of Class C + 2% CaCl₂ + 1/4#/sx flocele.

8-5/8" Intermediate: Cement to surface with 425 sx of Premium Plus lite + 15#/sx salt + 1/4#/sx Flocele and 300 sx Cl C + 2% CaCl₂

5-1/2" Prod casing: Cement with 350 sx 50/50 Cl H/Poz + 0.8% Halad 9 + 1/4#/sx Flocele. This cement slurry is designed to bring TOC to 3500'.

5. Minimum Specifications for Pressure Control:

The blowout preventer equipment (BOP) shown in Exhibit #1 will consist of a double ram-type (3000 psi WP) preventer and an annular preventer (3000 psi WP). Units will be hydraulically operated and the ram-type will be equipped with blind rams on top and drill pipe rams on bottom. All will be installed on the 11-3/4" surface casing and used continuously until TD is reached. All BOP's and accessory equipment will be tested to 1000 psi before drilling out of surface casing. Before drilling out of intermediate casing, the ram-type BOP and accessory equipment will be tested to 3000 psi and the annular to 70% of rated working pressure (2100 psi).

Pipe rams will be operationally checked each 24 hour period. Blind rams will be operationally checked on each trip out of the hole. These checks will be noted on the daily tour sheets. A 2" kill line and 4" choke line will be included in the drilling spool located below the ram-type BOP. Other accessories to the BOP equipment will include a kelly cock and floor safety valve (inside BOP) and choke lines and choke manifold with 3000 psi WP rating.

ENRON OIL & GAS COMPANY

ATTACHMENT

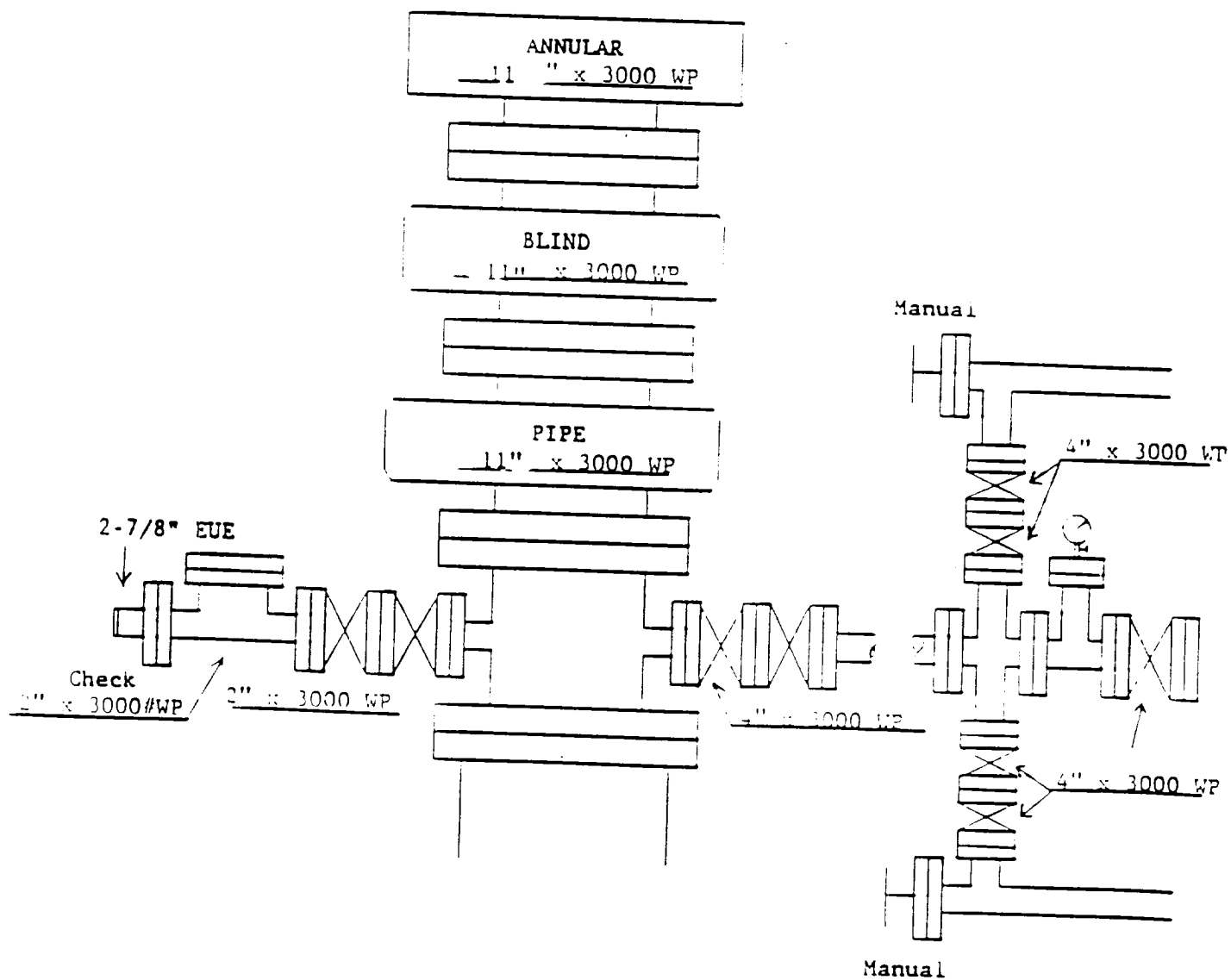


EXHIBIT "1"