

DISTRICT I
P.O. Box 1980, Hobbs, NM 88241-1980
DISTRICT II
P.O. Box Drawer DD, Artesia, NM 88211-0719
DISTRICT III
1000 Rio Brazos Rd., Aztec, NM 87410
DISTRICT IV
P.O. Box 2088, Santa Fe, NM 87504-2088

State of New Mexico
Energy, Minerals and Natural Resources Department

OIL CONSERVATION DIVISION

P.O. Box 2088
Santa Fe, New Mexico 87504-2088

Form C-101
Revised February 10, 1994
Instructions on back
Submit to Appropriate District Office
State Lease - 6 Copies
Fee Lease - 5 Copies
☒ AMENDED REPORT

APPLICATION FOR PERMIT TO DRILL, RE-ENTER, DEEPEN, PLUGBACK, OR ADD A ZONE

¹ Operator Name and Address TEXACO EXPLORATION & PRODUCTION INC. P.O. Box 3109, Midland Texas 79702		² OGRID Number 022351
⁴ Property Code 10860	⁵ Property Name HARRISON, B. F. 'B'	³ API Number 30-025-32497
		⁶ Well No. 17

⁷ Surface Location									
UI or lot no.	Section	Township	Range	Lot.Idn	Feet From The	North/South Line	Feet From The	East/West Line	County
D	9	23-S	37-E		990	NORTH	910	WEST	LEA

⁸ Proposed Bottom Hole Location If Different From Surface									
UI or lot no.	Section	Township	Range	Lot.Idn	Feet From The	North/South Line	Feet From The	East/West Line	County
⁹ Proposed Pool 1 NORTH TEAGUE-TUBB ASSOCIATED					¹⁰ Proposed Pool 2				

¹¹ Work Type Code A	¹² WellType Code M	¹³ Rotary or C.T. R	¹⁴ Lease Type Code P	¹⁵ Ground Level Elevation GR-3318', KB-3330'
¹⁶ Multiple Yes	¹⁷ Proposed Depth 7000'	¹⁸ Formation TUBB	¹⁹ Contractor	²⁰ Spud Date 8/4/94

²¹ Proposed Casing and Cement Program					
SIZE OF HOLE	SIZE OF CASING	WEIGHT PER FOOT	SETTING DEPTH	SACKS OF CEMENT	EST. TOP

²² Describe the proposed program. If this application is to DEEPEN or PLUG BACK give the data on the present productive zone and proposed new productive zone. Describe the blowout prevention program, if any. Use additional sheets if necessary.

ADD FIELD TO EXISTING APD. TEXACO PLANS TO DUAL COMPETE THIS FIELD WITH THE NORTH TEAGUE DRINKARD-ABO FIELD. FORM C-107 WILL BE FILED.

²³ I hereby certify that the rules and regulations of the Oil Conservation Division have been complied with and that the information given above is true and complete to the best of my knowledge and belief.

Signature

C. Wade Howard

Printed Name

C. Wade Howard

Title

Eng. Assistant

Date

11/14/94

Telephone

688-4606

OIL CONSERVATION DIVISION

Approved By: ORIGINAL SIGNED BY
GARY WINK

Title: FIELD REP. II

Approval Date:

NOV 23 1994

Expiration Date:

Conditions of Approval:

Attached ☐

DISTRICT I

P.O. Box 1980, Hobbs, NM 88241-1980

DISTRICT II

P.O. Box Drawer DD, Artesia, NM 88211-0719

DISTRICT III

1000 Rio Brazos Rd., Aztec, NM 87410

DISTRICT IV

P.O. Box 2088, Santa Fe, NM 87504-2088

State of New Mexico
Energy, Minerals and Natural Resources Department

OIL CONSERVATION DIVISION

P.O. Box 2088
 Santa Fe, New Mexico 87504-2088

Form C-102

Revised February 10, 1994

Instructions on back

Submit to Appropriate District Office

State Lease - 4 Copies

Fee Lease - 3 Copies

☐ AMENDED REPORT**WELL LOCATION AND ACREAGE DEDICATION PLAT**

¹ API Number 30 025 32497	² Pool Code 96315	³ Pool Name NORTH TEAGUE - TUBB ASSOCIATED
⁴ Property Code 10960	⁵ Property Name HARRISON, B. F. 'B'	⁶ Well No. 17
⁷ OGRID Number 022351	⁸ Operator Name TEXACO EXPLORATION & PRODUCTION INC.	⁹ Elevation 3318'

¹⁰ Surface Location

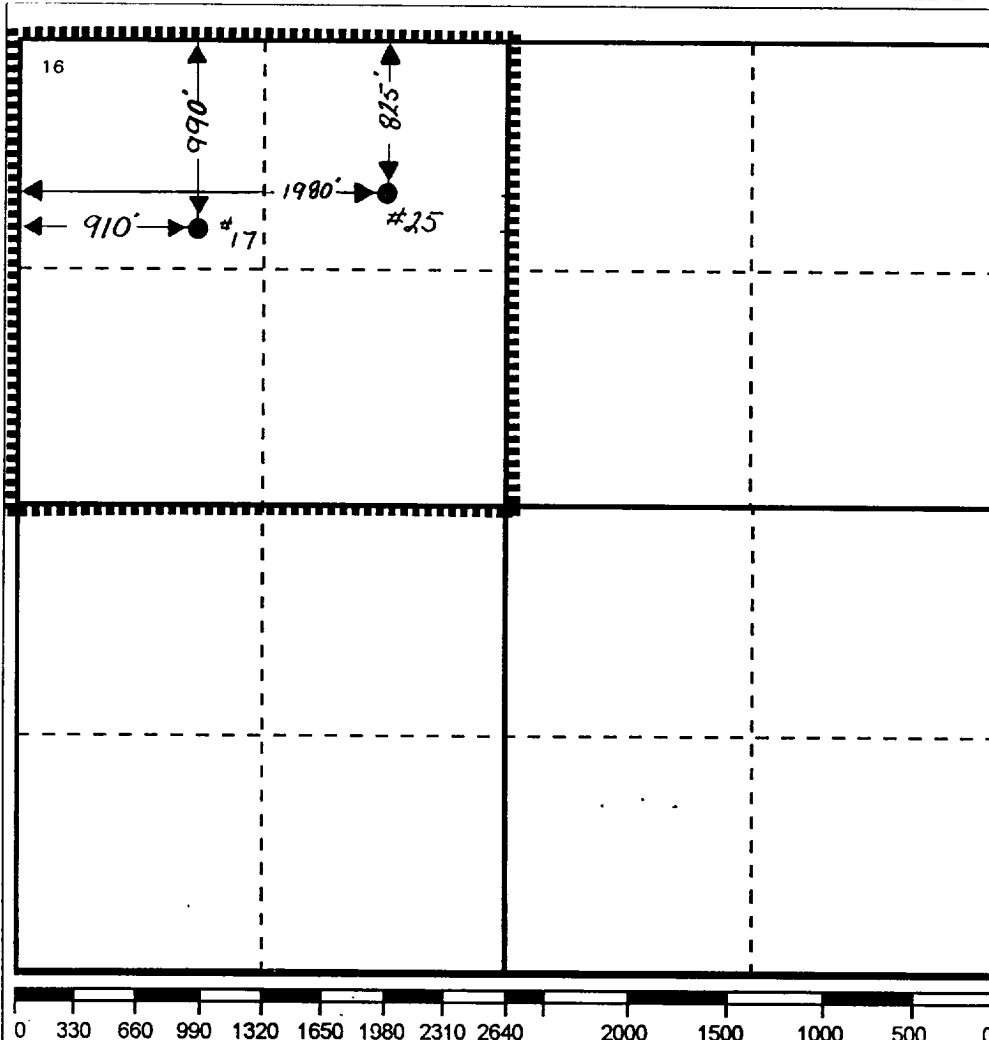
Ul or lot no.	Section	Township	Range	Lot.Idn	Feet From The	North/South Line	Feet From The	East/West Line	County
D	9	23-S	37-E		990	NORTH	910	WEST	LEA

¹¹ Bottom Hole Location If Different From Surface

Ul or lot no.	Section	Township	Range	Lot.Idn	Feet From The	North/South Line	Feet From The	East/West Line	County

¹² Dedicated Acres 160	¹³ Joint or Infill No	¹⁴ Consolidation Code	¹⁵ Order No.
--------------------------------------	-------------------------------------	----------------------------------	-------------------------

NO ALLOWABLE WILL BE ASSIGNED TO THIS COMPLETION UNTIL ALL INTERESTS HAVE BEEN CONSOLIDATED
 OR A NON-STANDARD UNIT HAS BEEN APPROVED BY THE DIVISION



17 OPERATOR CERTIFICATION I hereby certify that the information contained herein is true and complete to the best of my knowledge and belief
Signature <i>[Signature]</i>
Printed Name Darrell J. Carriger
Position Engineering Assistant
Date 11/15/94
18 SURVEYOR CERTIFICATION I hereby certify that the well location shown on this plat was plotted from field notes of actual surveys made by me or under my supervision, and that the same is true and correct to the best of my knowledge and belief.
Date Surveyed
Signature & Seal of Professional Surveyor
Certificate No.