

DISTRICT I

P.O. Box 1980, Hobbs, NM 88241-1980

DISTRICT II

P.O. Box Drawer DD, Artesia, NM 88211-0719

DISTRICT III

1000 Rio Brazos Rd., Aztec, NM 87410

DISTRICT IV

P.O. Box 2088, Santa Fe, NM 87504-2088

State of New Mexico

Energy, Minerals and Natural Resources Department

Form C-101

Revised February 10, 1994

Instructions on back

Submit to Appropriate District Office

State Lease - 6 Copies

Fee Lease - 5 Copies

☐ AMENDED REPORT

OIL CONSERVATION DIVISION

P.O. Box 2088

Santa Fe, New Mexico 87504-2088

APPLICATION FOR PERMIT TO DRILL, RE-ENTER, DEEPEN, PLUGBACK, OR ADD A ZONE

¹ Operator Name and Address TEXACO EXPLORATION & PRODUCTION INC. 205 E. Bender, HOBBS, NM 88240		² OGRiD Number 022351
		³ API Number 30 025 32498
⁴ Property Code 10960	⁵ Property Name HARRISON, B. F. 'B'	⁶ Well No. 23

⁷ Surface Location

UI or lot no.	Section	Township	Range	Lot.Idn	Feet From The	North/South Line	Feet From The	East/West Line	County
F	9	23-S	37-E		1815	NORTH	1815	WEST	LEA

⁸ Proposed Bottom Hole Location If Different From Surface

UI or lot no.	Section	Township	Range	Lot.Idn	Feet From The	North/South Line	Feet From The	East/West Line	County
⁹ Proposed Pool 1 N. Teague Drnkrd Abo/N. Teague Paddock Blinbry					¹⁰ Proposed Pool 2				

¹¹ Work Type Code → DHC	¹² WellType Code M	¹³ Rotary or C.T. R	¹⁴ Lease Type Code P	¹⁵ Ground Level Elevation GR-3313', KB-3325'
¹⁶ Multiple Yes	¹⁷ Proposed Depth 7000'	¹⁸ Formation Drnkrd Abo/Pad Blinbry	¹⁹ Contractor	²⁰ Spud Date 7/1/99

²¹ Proposed Casing and Cement Program

SIZE OF HOLE	SIZE OF CASING	WEIGHT PER FOOT	SETTING DEPTH	SACKS OF CEMENT	EST. TOP
12 1/4	9 5/8	36#	1180'	550	SURFACE
8 3/4	7	23# & 26#	7150'	3050	SURFACE

²² Describe the proposed program. If this application is to DEEPEN or PLUG BACK give the data on the present productive zone and proposed new productive zone. Describe the blowout prevention program, if any. Use additional sheets if necessary.

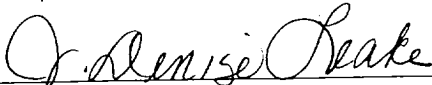
Texaco intends to DHC the Teague Lower Paddock Blinbry North Assoc. & the Teague Drinkard Abo North Assoc. The intended procedure is as follows:

1. MIRU PU.
2. Kill well if necessary.
3. TOH w/tbg strings.
4. TIH w/pkr picker, shoe, & DC's on WS.
5. RU foam unit.
6. Drill pkr free. TOH.
7. TIH w/prod eqpt.
8. Any add'l prod gained from DHC, will be allocated to ABO for the production split.
{ Application for DHC has been submitted to NMOCD in Santa Fe, NM }

1 Year From Approval
DHC Underway
DHC

²³ I hereby certify that the rules and regulations of the Oil Conservation Division have been complied with and that the information given above is true and complete to the best of my knowledge and belief.

Signature



Printed Name

J. Denise Leake

Title Engineering Assistant

Date 4/12/99

Telephone 397-0405

OIL CONSERVATION DIVISION

Approved By:

Title:

Approval Date:

Expiration Date:

Conditions of Approval:

Attached ☐

DISTRICT I

P.O. Box 1980, Hobbs, NM 88241-1980

DISTRICT II

P.O. Box Drawer DD, Artesia, NM 88211-0719

DISTRICT III

1000 Rio Brazos Rd., Aztec, NM 87410

DISTRICT IV

P.O. Box 2088, Santa Fe, NM 87504-2088

State of New Mexico
Energy, Minerals and Natural Resources Department

OIL CONSERVATION DIVISION

P.O. Box 2088
Santa Fe, New Mexico 87504-2088

Form C-102

Revised February 10, 1994

Instructions on back

Submit to Appropriate District Office

State Lease - 4 Copies

Fee Lease - 3 Copies

☐ AMENDED REPORT

WELL LOCATION AND ACREAGE DEDICATION PLAT

¹ API Number 30 025 32498		² Pool Code 96313		³ Pool Name North Teague Drinkard Abo Assoc.	
⁴ Property Code 10960		⁵ Property Name Harrison B. F. "B"			⁶ Well No. 23
⁷ OGRID Number 022351		⁸ Operator Name TEXACO EXPLORATION & PRODUCTION INC.			⁹ Elevation 3313'

¹⁰ Surface Location

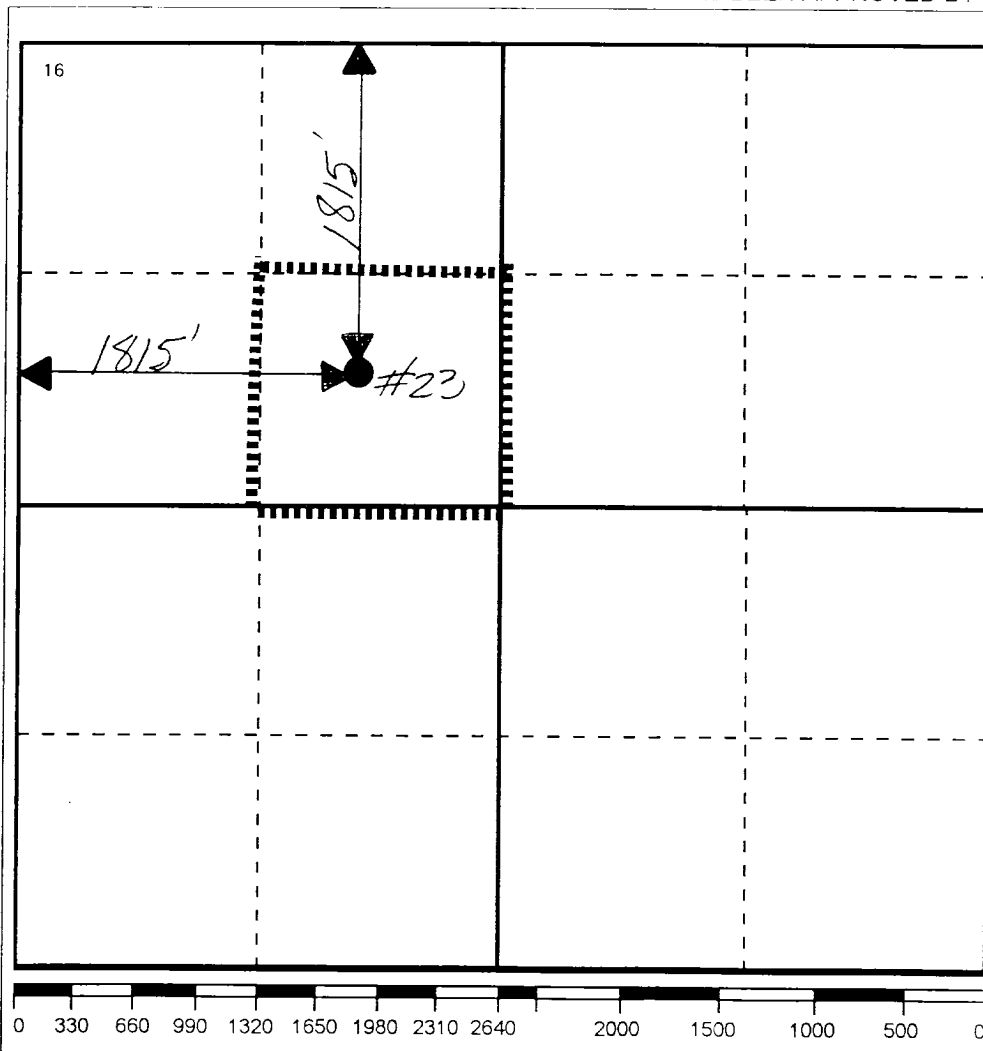
UI or lot no.	Section	Township	Range	Lot Idn	Feet From The	North/South Line	Feet From The	East/West Line	County
F	9	23S	37E		1815	NORTH	1815	WEST	LEA

¹¹ Bottom Hole Location If Different From Surface

UI or lot no.	Section	Township	Range	Lot Idn	Feet From The	North/South Line	Feet From The	East/West Line	County

¹² Dedicated Acres 40	¹³ Joint or Infill No	¹⁴ Consolidation Code	¹⁵ Order No.
-------------------------------------	-------------------------------------	----------------------------------	-------------------------

NO ALLOWABLE WILL BE ASSIGNED TO THIS COMPLETION UNTIL ALL INTERESTS HAVE BEEN CONSOLIDATED
OR A NON-STANDARD UNIT HAS BEEN APPROVED BY THE DIVISION

¹⁷ OPERATOR CERTIFICATION

I hereby certify that the information
contained herein is true and complete to the
best of my knowledge and belief

Signature

J. Denise Leake

Printed Name

J. Denise Leake

Position

Engineering Assistant

Date

4/9/99

¹⁸ SURVEYOR CERTIFICATION

I hereby certify that the well location shown
on this plat was plotted from field notes of
actual surveys made by me or under my
supervision, and that the same is true and
correct to the best of my knowledge and
belief.

Date Surveyed

Signature & Seal of

Professional Surveyor

Certificate No.

DISTRICT I

P.O. Box 1980, Hobbs, NM 88241-1980

DISTRICT II

P.O. Box Drawer DD, Artesia, NM 88211-0719

DISTRICT III

1000 Rio Brazos Rd., Aztec, NM 87410

DISTRICT IV

P.O. Box 2088, Santa Fe, NM 87504-2088

State of New Mexico
Energy, Minerals and Natural Resources Department

OIL CONSERVATION DIVISION

P.O. Box 2088
Santa Fe, New Mexico 87504-2088

Form C-102

Revised February 10, 1994

Instructions on back

Submit to Appropriate District Office

State Lease - 4 Copies

Fee Lease - 3 Copies

☐ AMENDED REPORT

WELL LOCATION AND ACREAGE DEDICATION PLAT

¹ API Number 30 025 32498	² Pool Code 96314	³ Pool Name North Teague Lower Paddock-Blaine Associated
⁴ Property Code 10960	⁵ Property Name Harrison B. F. "B"	⁶ Well No. 23
⁷ OGRID Number 022351	⁸ Operator Name TEXACO EXPLORATION & PRODUCTION INC.	⁹ Elevation 3313'

¹⁰ Surface Location

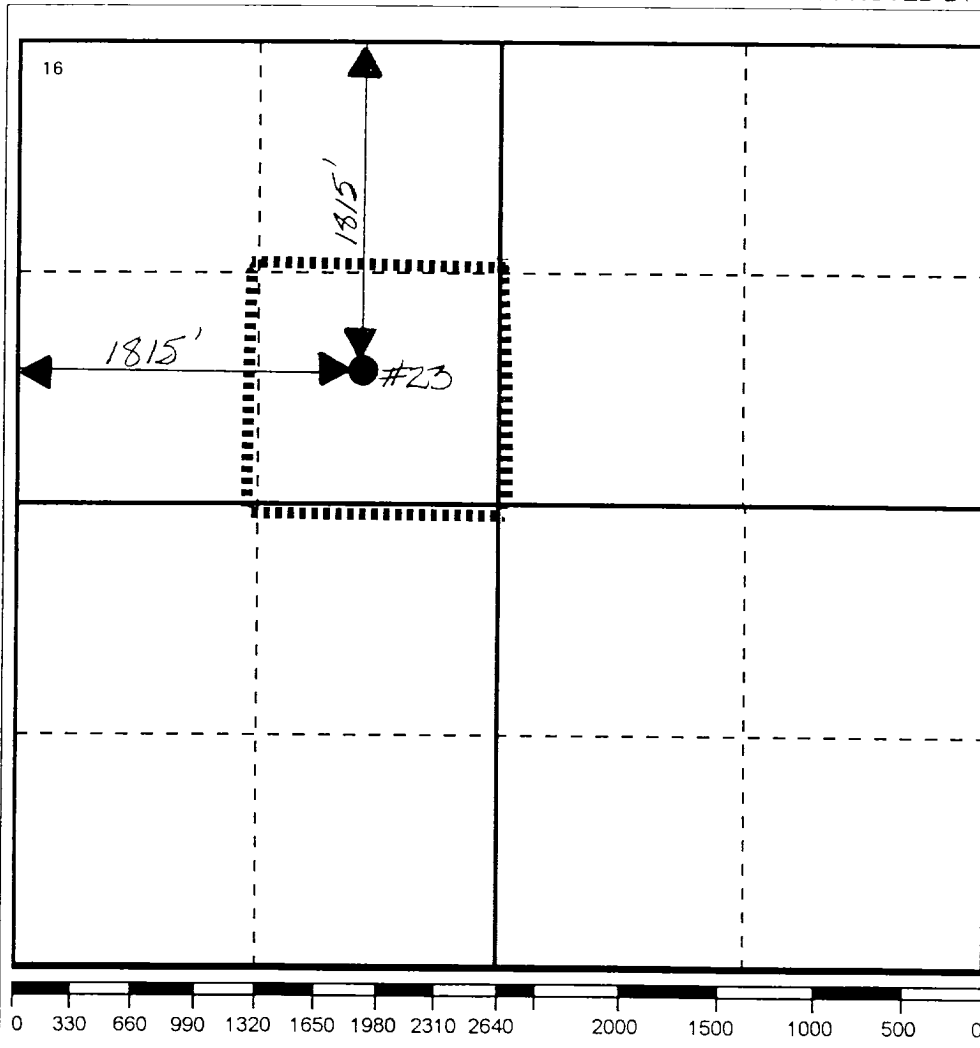
Ul or lot no.	Section	Township	Range	Lot.Idn	Feet From The	North/South Line	Feet From The	East/West Line	County
F	9	23S	37E		1815	NORTH	1815	WEST	LEA

¹¹ Bottom Hole Location If Different From Surface

Ul or lot no.	Section	Township	Range	Lot.Idn	Feet From The	North/South Line	Feet From The	East/West Line	County

¹² Dedicated Acres 40	¹³ Joint or Infill No	¹⁴ Consolidation Code	¹⁵ Order No.
-------------------------------------	-------------------------------------	----------------------------------	-------------------------

NO ALLOWABLE WILL BE ASSIGNED TO THIS COMPLETION UNTIL ALL INTERESTS HAVE BEEN CONSOLIDATED
OR A NON-STANDARD UNIT HAS BEEN APPROVED BY THE DIVISION



17 OPERATOR CERTIFICATION

I hereby certify that the information
contained herein is true and complete to the
best of my knowledge and belief

Signature

J. Denise Leake

Printed Name

J. Denise Leake

Position

Engineering Assistant

Date

4/9/99

18 SURVEYOR CERTIFICATION

I hereby certify that the well location shown
on this plat was plotted from field notes of
actual surveys made by me or under my
supervision, and that the same is true and
correct to the best of my knowledge and
belief.

Date Surveyed

Signature & Seal of

Professional Surveyor

Certificate No.