

**DISTRICT I**

P.O. Box 1980, Hobbs, NM 88241-1980

**DISTRICT II**

P.O. Box Drawer DD, Artesia, NM 88211-0719

**DISTRICT III**

1000 Rio Brazos Rd., Aztec, NM 87410

**DISTRICT IV**

P.O. Box 2088, Santa Fe, NM 87504-2088

## State of New Mexico

Energy, Minerals and Natural Resources Department

Form C-101

Revised February 10, 1994

Instructions on back

Submit to Appropriate District Office

State Lease - 6 Copies

Fee Lease - 5 Copies

☒ AMENDED REPORT**OIL CONSERVATION DIVISION**

P.O. Box 2088

Santa Fe, New Mexico 87504-2088

**APPLICATION FOR PERMIT TO DRILL, RE-ENTER, DEEPEN, PLUGBACK, OR ADD A ZONE**

<sup>1</sup> Operator Name and Address TEXACO EXPLORATION & PRODUCTION INC. P.O. Box 3109, Midland Texas 79702		<sup>2</sup> OGRID Number 022351
		<sup>3</sup> API Number 30-025-32500
<sup>4</sup> Property Code 10961	<sup>5</sup> Property Name HARRISON, B. F. 'C'	<sup>6</sup> Well No. 3

**<sup>7</sup> Surface Location**

UI or lot no.	Section	Township	Range	Lot.Idn	Feet From The	North/South Line	Feet From The	East/West Line	County
L	9	23-S	37-E		1980	SOUTH	925	WEST	LEA

**<sup>8</sup> Proposed Bottom Hole Location If Different From Surface**

UI or lot no.	Section	Township	Range	Lot.Idn	Feet From The	North/South Line	Feet From The	East/West Line	County
<sup>9</sup> Proposed Pool 1 NORTH TEAGUE-TUBB ASSOCIATED					<sup>10</sup> Proposed Pool 2				

<sup>11</sup> Work Type Code A	<sup>12</sup> WellType Code M	<sup>13</sup> Rotary or C.T. R	<sup>14</sup> Lease Type Code P	<sup>15</sup> Ground Level Elevation GR-3319', KB-3331'
<sup>16</sup> Multiple Yes	<sup>17</sup> Proposed Depth 7000'	<sup>18</sup> Formation TUBB	<sup>19</sup> Contractor	<sup>20</sup> Spud Date 8/19/94

**<sup>21</sup> Proposed Casing and Cement Program**

SIZE OF HOLE	SIZE OF CASING	WEIGHT PER FOOT	SETTING DEPTH	SACKS OF CEMENT	EST. TOP

<sup>22</sup> Describe the proposed program. If this application is to DEEPEN or PLUG BACK give the data on the present productive zone and proposed new productive zone. Describe the blowout prevention program, if any. Use additional sheets if necessary.

ADD FIELD TO EXISTING APD. TEXACO PLANS TO DUAL COMPLETE THIS FIELD WITH THE NORTH TEAGUE DRINKARD-ABO. FORM C-107 WILL BE FILED.

<sup>23</sup> I hereby certify that the rules and regulations of the Oil Conservation Division have been complied with and that the information given above is true and complete to the best of my knowledge and belief.		<b>OIL CONSERVATION DIVISION</b>	
Signature <i>C. Wade Howard</i>	Approved By:		
Printed Name C. Wade Howard		Title:	
Title Eng. Assistant		Approval Date: <i>11/14/94</i>	Expiration Date:
Date 11/14/94	Telephone 688-4606	Conditions of Approval: Attached <input type="checkbox"/>	

## DISTRICT I

P.O. Box 1980, Hobbs, NM 88241-1980

## DISTRICT II

P.O. Box Drawer DD, Artesia, NM 88211-0719

## DISTRICT III

1000 Rio Brazos Rd., Aztec, NM 87410

## DISTRICT IV

P.O. Box 2088, Santa Fe, NM 87504-2088

## State of New Mexico

Energy, Minerals and Natural Resources Department

## OIL CONSERVATION DIVISION

P.O. Box 2088

Santa Fe, New Mexico 87504-2088

Form C-102

Revised February 10, 1994

Instructions on back

Submit to Appropriate District Office

State Lease - 4 Copies

Fee Lease - 3 Copies

☐ AMENDED REPORT

## WELL LOCATION AND ACREAGE DEDICATION PLAT

<sup>1</sup> API Number 30 025 32500	<sup>2</sup> Pool Code 96315	<sup>3</sup> Pool Name NORTH TEAGUE - TUBB ASSOCIATED
<sup>4</sup> Property Code 10963	<sup>5</sup> Property Name HARRISON, B. F. 'C'	<sup>6</sup> Well No. 3
<sup>7</sup> OGRID Number 022351	<sup>8</sup> Operator Name TEXACO EXPLORATION & PRODUCTION INC.	<sup>9</sup> Elevation 3319'

<sup>10</sup> Surface Location

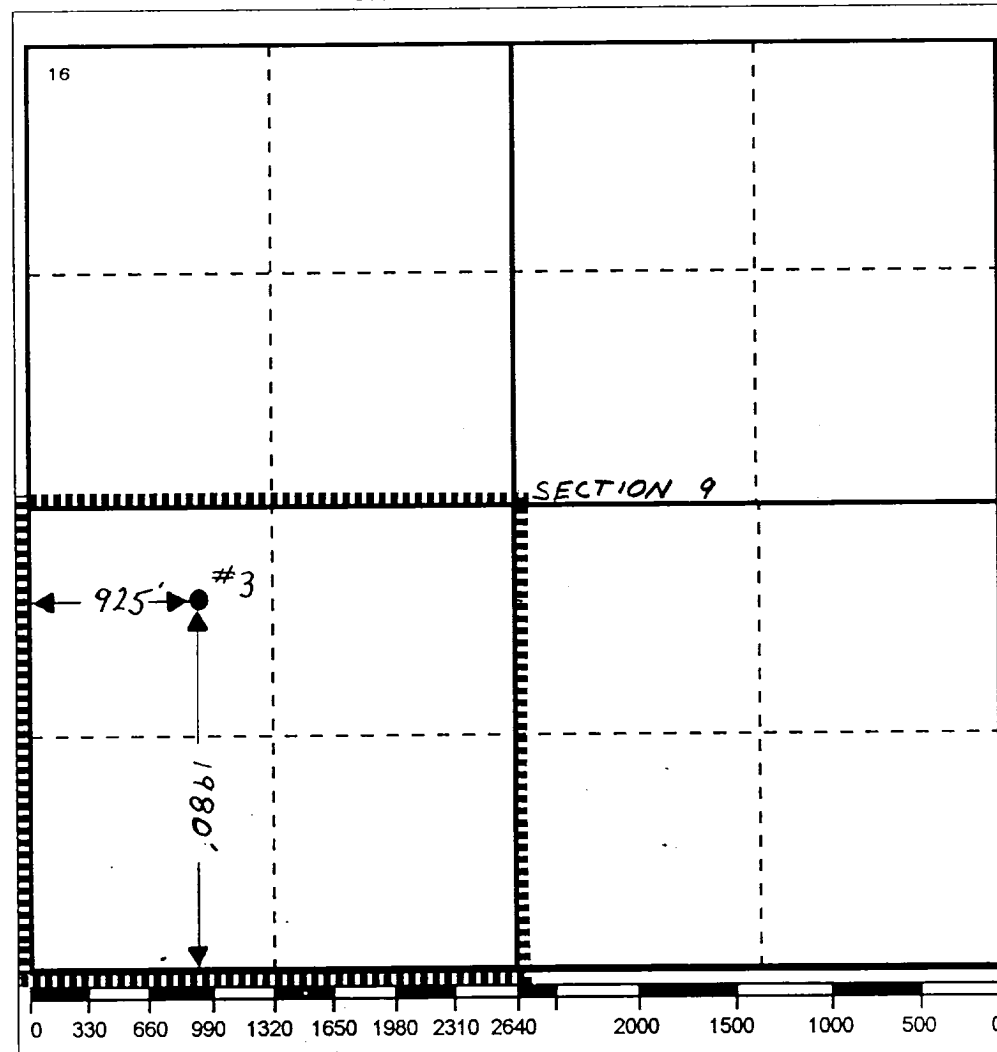
UI or lot no.	Section	Township	Range	Lot.Idn	Feet From The	North/South Line	Feet From The	East/West Line	County
L	9	23-S	37-E		1980	SOUTH	925	WEST	LEA

<sup>11</sup> Bottom Hole Location If Different From Surface

UI or lot no.	Section	Township	Range	Lot.Idn	Feet From The	North/South Line	Feet From The	East/West Line	County

<sup>12</sup> Dedicated Acres 160	<sup>13</sup> Joint or Infill No	<sup>14</sup> Consolidation Code	<sup>15</sup> Order No.
--------------------------------------	-------------------------------------	----------------------------------	-------------------------

NO ALLOWABLE WILL BE ASSIGNED TO THIS COMPLETION UNTIL ALL INTERESTS HAVE BEEN CONSOLIDATED  
OR A NON-STANDARD UNIT HAS BEEN APPROVED BY THE DIVISION



## 17 OPERATOR CERTIFICATION

I hereby certify that the information contained herein is true and complete to the best of my knowledge and belief

Signature

Printed Name

Darrell J. Carriger

Position

Engineering Assistant

Date

11/15/94

## 18 SURVEYOR CERTIFICATION

I hereby certify that the well location shown on this plat was plotted from field notes of actual surveys made by me or under my supervision, and that the same is true and correct to the best of my knowledge and belief.

Date Surveyed

Signature & Seal of  
Professional Surveyor

Certificate No.