

100 instructions. On November 1, 1964, the following instructions were issued to the Department of the Army and Navy:

Submit to Appropriate
District Office
State Lease - 4 copies
Fee Lease - 3 copies

State of New Mexico
Energy, Minerals and Natural Resources Department

Form C-102
Revised 1-1-89

OIL CONSERVATION DIVISION

DISTRICT I

P.O. Box 1980, Hobbs, NM 88240

P.O. Box 2088

Santa Fe, New Mexico 87504-2088

DISTRICT II

P.O. Drawer DD, Artesia, NM 88210

DISTRICT III

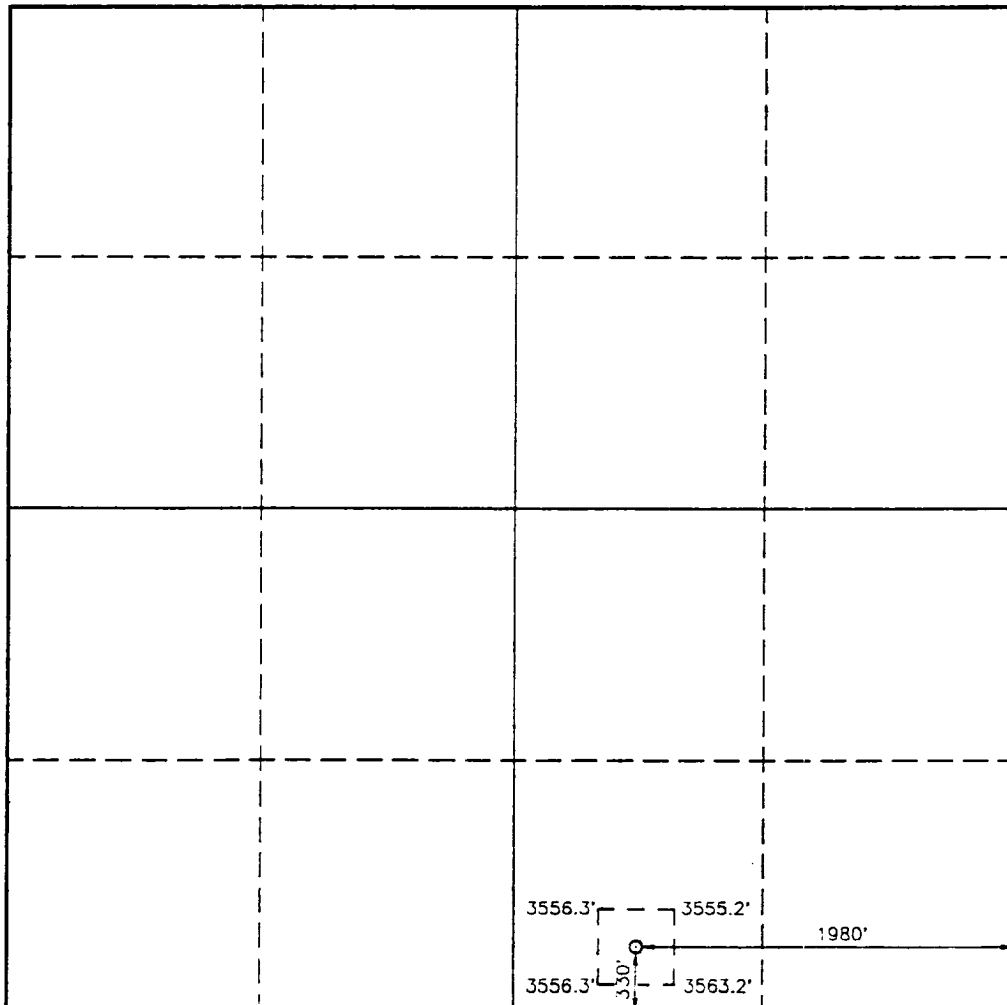
1000 Rio Brazos Rd., Aztec, NM 87410

WELL LOCATION AND ACREAGE DEDICATION PLAT

All Distances must be from the outer boundaries of the section

Operator ENRON OIL & GAS CO.		Lease MESA VERDE "6" FEDERAL		Well No. 3
Unit Letter 0	Section 6	Township 24 SOUTH	Range 32 EAST NMPM	County LEA
Actual Footage Location of Well: 330 feet from the SOUTH line and 1980 feet from the EAST line				
Ground Level Elev. 3557.8'	Producing Formation Bone Spring/Delaware	Pool Und. <i>W. 1/4 Sec 6</i>	Dedicated Acreage: 40 Acres	

- Outline the acreage dedicated to the subject well by colored pencil or hatchure marks on the plat below.
- If more than one lease is dedicated to the well, outline each and identify the ownership thereof (both as to working interest and royalty).
- If more than one lease of different ownership is dedicated to the well, have the interest of all owners been consolidated by communitization, unitization, force-pooling, etc.?
☐ Yes ☐ No If answer is "yes" type of consolidation _____
If answer is "no" list of owners and tract descriptions which have actually been consolidated. (Use reverse side of this form necessary.)
No allowable will be assigned to the well unit all interests have been consolidated (by communitization, unitization, forced-pooling, otherwise) or until a non-standard unit, eliminating such interest, has been approved by the Division.



OPERATOR CERTIFICATION

I hereby certify the the information contained herein is true and complete to the best of my knowledge and belief.

Signature
Betty Gildon
Printed Name
Betty Gildon
Position
Regulatory Analyst
Company
Enron Oil & Gas Company
Date
3/4/94

SURVEYOR CERTIFICATION

I hereby certify that the well location shown on this plat was plotted from field notes of actual surveys made by me or under my supervision, and that the same is true and correct to the best of my knowledge and belief.

Date Surveyed
OCTOBER 13, 1993
Signature & Seal of
Professional Surveyor

GARY L. JONES
NEW MEXICO
7977
Certified Professional Surveyor
JOHN W. WEST 878
RONALD J. EDDY 3290
JAMES 7977

93-1-1958

DRILLING PROGRAM

Enron Oil & Gas Company
Mesa Verde 6 Federal No. 3
330' FSL & 1980' FEL
Sec. 6, T24S, R32E
Lea County, New Mexico

1. Geologic Name of Surface Formation:

Permian

2. Estimated Tops of Important Geologic Markers:

Rustler	930'
Delaware	4600'
Bell Canyon	4580'
Cherry Canyon	5650'
Bone Spring	8500'

3. Estimated Depths of Anticipated Fresh Water, Oil or Gas:

Delaware	4600'	Water & Oil
----------	-------	-------------

No other formations are expected to give up oil, gas or fresh water in measurable quantities. The surface fresh water sands will be protected by setting 11-3/4" casing at 600' and circulating cement back to surface, and 8-5/8" casing will be set at 4600' with cement circulating back to surface.

Enron Oil & Gas Company
Mesa Verde 6 Federal No. 3
330' FSL & 1980' FEL
Sec. 6, T24S, R32E
Lea County, New Mexico

4. Casing Program:

<u>Hole Size</u>	<u>Interval</u>	<u>OD csq</u>	<u>Weight Grade Jt. Cond. Type</u>
14-3/4	0- 600'	11-3/4	42# H-40 A ST&C
11	0- 4600'	8-5/8	32# J-55 LT&C
7-7/8	0- 8750'	5-1/2	17# J-55 LT&C

Cementing Program:

11-3/4" Surface casing: Cement to surface with 275 sx of Class C + 2% CaCl₂ + 1/4#/sx flocele.

8-5/8" Intermediate: Cement to surface with 425 sx of Premium Plus lite + 15#/sx salt + 1/4#/sx Flocele and 300 sx Cl C + 2% CaCl₂

5-1/2" Prod casing: Cement with 350 sx 50/50 Cl H/Poz + 0.8% Halad 9 + 1/4#/sx Flocele. This cement slurry is designed to bring TOC to 3500'.

5. Minimum Specifications for Pressure Control:

The blowout preventer equipment (BOP) shown in Exhibit #1 will consist of a double ram-type (3000 psi WP) preventer and an annular preventer (3000 psi WP). Units will be hydraulically operated and the ram-type will be equipped with blind rams on top and drill pipe rams on bottom. All will be installed on the 11-3/4" surface casing and used continuously until TD is reached. All BOP's and accessory equipment will be tested to 1000 psi before drilling out of surface casing. Before drilling out of intermediate casing, the ram-type BOP and accessory equipment will be tested to 3000 psi and the annular to 70% of rated working pressure (2100 psi).

Pipe rams will be operationally checked each 24 hour period. Blind rams will be operationally checked on each trip out of the hole. These checks will be noted on the daily tour sheets. A 2" kill line and 4" choke line will be included in the drilling spool located below the ram-type BOP. Other accessories to the BOP equipment will include a kelly cock and floor safety valve (inside BOP) and choke lines and choke manifold with 3000 psi WP rating.

ENRON OIL & GAS COMPANY

ATTACHMENT

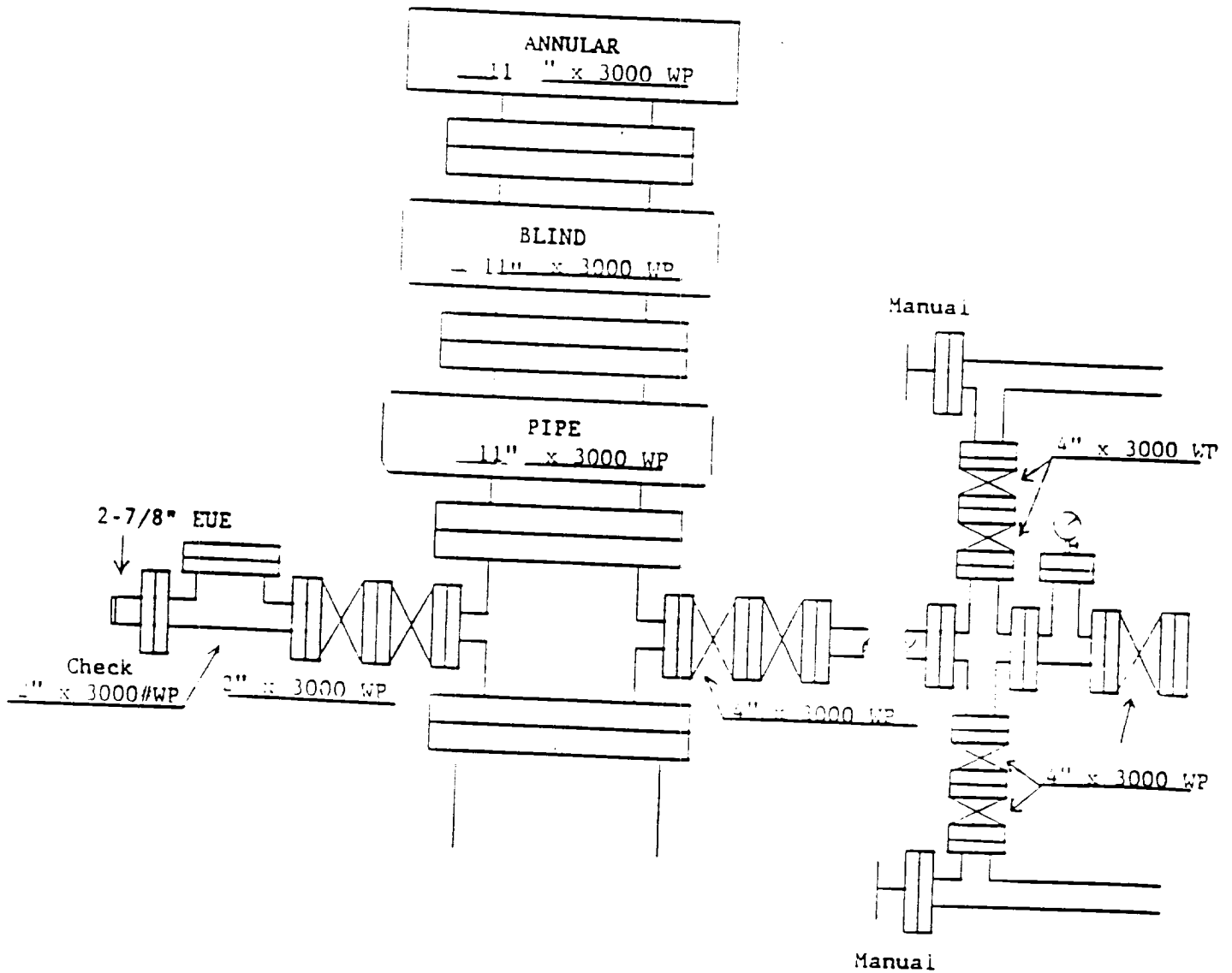


EXHIBIT #1