

N.M. OIL CONS. COMMISSION
P.O. BOX 1980
HOBBS, NEW MEXICO 88240

Form 3160-3
(July 1992)

SUBMIT IN TRIPLICATE*
(Other instructions on
reverse side)

FORM APPROVED
OMB NO. 1004-0136
Expires: February 28, 1995

UNITED STATES
DEPARTMENT OF THE INTERIOR
BUREAU OF LAND MANAGEMENT

APPLICATION FOR PERMIT TO DRILL OR DEEPEN

1A. TYPE OF WORK

DRILL ☒

DEEPEN ☐

B. TYPE OF WELL

OIL
WELL ☒

GAS
WELL ☐

OTHER

SINGLE
ZONE ☒

MULTIPLE
ZONE ☐

2. NAME OF OPERATOR

Enron Oil & Gas Company

3. ADDRESS AND TELEPHONE NO.

P. O. Box 2267, Midland, Texas 79702

4. LOCATION OF WELL (Report location clearly and in accordance with any State requirements.)*
At surface

1980' FNL & 1980' FEL

At proposed prod. zone

1980' FNL & 1980' FEL

14. DISTANCE IN MILES AND DIRECTION FROM NEAREST TOWN OR POST OFFICE*

35 miles SE of Carlsbad

15. DISTANCE FROM PROPOSED*

LOCATION TO NEAREST
PROPERTY OR LEASE LINE, FT. 1980
(Also to nearest drig. unit line, if any) 660

16. NO. OF ACRES IN LEASE

640

17. NO. OF ACRES ASSIGNED
TO THIS WELL

40

18. DISTANCE FROM PROPOSED LOCATION*
TO NEAREST WELL, DRILLING, COMPLETED,
OR APPLIED FOR, ON THIS LEASE, FT. 1700

19. PROPOSED DEPTH

8750

20. ROTARY OR CABLE TOOLS

Rotary

21. ELEVATIONS (Show whether DF, RT, GR, etc.)

3567.5' GR

22. APPROX. DATE WORK WILL START*

April 11, 1994

23.

PROPOSED CASING AND CEMENTING PROGRAM

SIZE OF HOLE	GRADE, SIZE OF CASING	WEIGHT PER FOOT	SETTING DEPTH	QUANTITY OF CEMENT
14-3/4	11-3/4 H-40 A	ST&C 42#	600	275 sx CIRCULATED
11	8-5/8 J-55 LT&C	32#	4600	725 sx CIRCULATED
7-7/8	5-1/2 J-55 LT&C	17#	8750	350 sx TOC est at 3500'

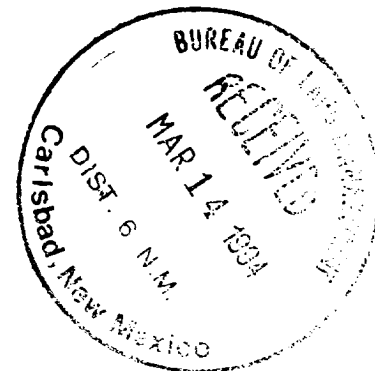
OPER. OGRID NO. 7377

PROPERTY NO. 13216

POOL CODE 96636

EFF. DATE 4-27-94

API NO. 32025-3230



Acreage is dedicated to a pipeline.

IN ABOVE SPACE DESCRIBE PROPOSED PROGRAM: If proposal is to deepen, give data on present productive zone and proposed new productive zone. If proposal is to drill or deepen directionally, give pertinent data on subsurface locations and measured and true vertical depths. Give blowout preventer program, if any.

24.

SIGNED

Betty Gildon

Betty Gildon TITLE Regulatory Analyst

DATE 3/10/94

(This space for Federal or State office use)

PERMIT NO.

APPROVAL DATE

Application approval does not warrant or certify that the applicant holds legal or equitable title to those rights in the subject lease which would entitle the applicant to sue thereon.
CONDITIONS OF APPROVAL, IF ANY:

APPROVAL SUBJECT TO
GENERAL REQUIREMENTS AND
SPECIAL STIPULATIONS
ATTACHED

APPROVED BY

Scott Powers

TITLE Acting AREA MANAGER

DATE

4-21-94

*See Instructions On Reverse Side

and willfully make to any department or agency of the

Page D

OFFICE

Submit to Appropriate
District Office
State Lease - 4 copies
Fee Lease - 3 copies

State of New Mexico
Energy, Minerals and Natural Resources Department

Form C-102
Revised 1-1-89

OIL CONSERVATION DIVISION

P.O. Box 2088

Santa Fe, New Mexico 87504-2088

DISTRICT I

P.O. Box 1980, Hobbs, NM 88240

DISTRICT II

P.O. Drawer DD, Artesia, NM 88210

DISTRICT III

1000 Rio Brazos Rd., Aztec, NM 87410

WELL LOCATION AND ACREAGE DEDICATION PLAT

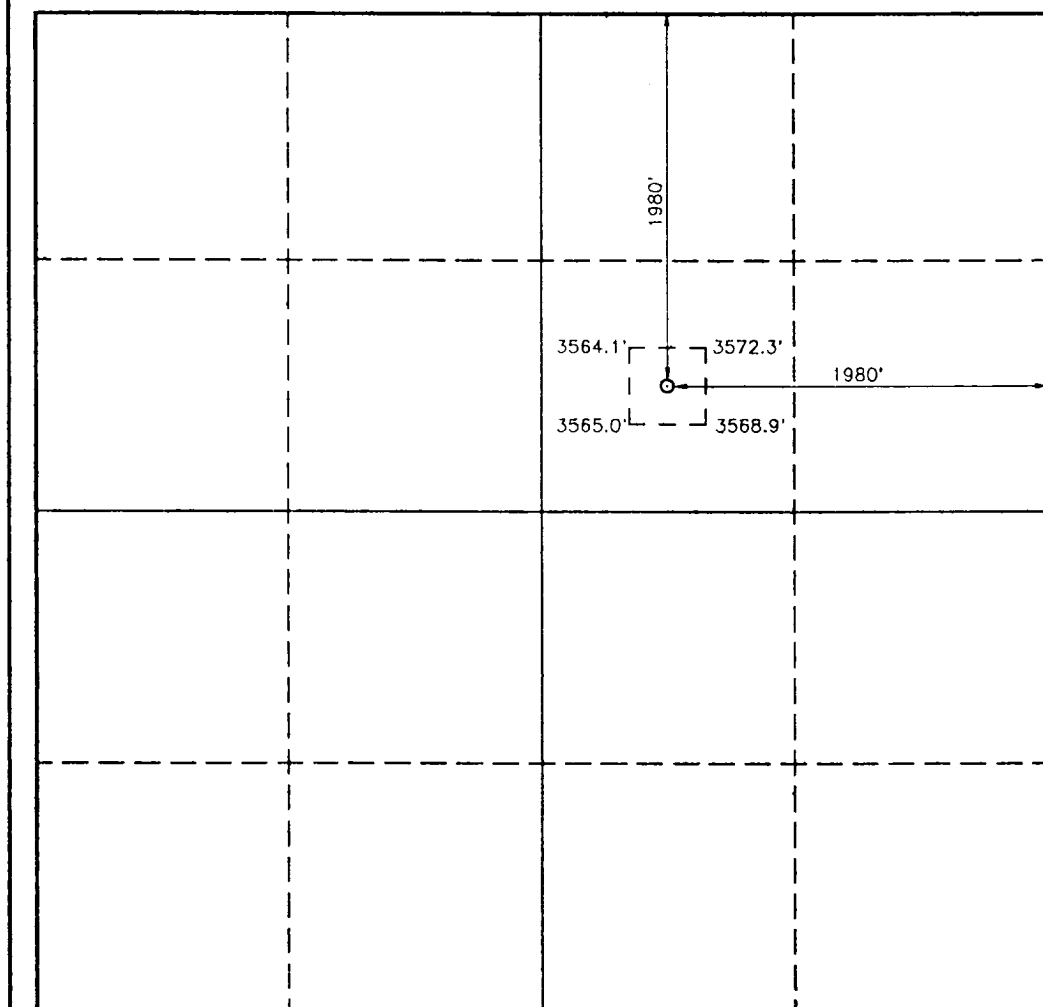
All Distances must be from the outer boundaries of the section

Operator ENRON OIL & GAS CO.		Lease MESA VERDE "6" FEDERAL		Well No. 5
Unit Letter G	Section 6	Township 24 SOUTH	Range 32 EAST NMPM	County LEA
Actual Footage Location of Well: 1980 feet from the NORTH line and 1980 feet from the EAST line				
Ground Level Elev. 3567.5'	Producing Formation Bone Spring/Delaware		Pool Und. 11, 12, 13, 14, 15, 16, 17, 18, 19, 20	Dedicated Acreage: 40 Acres

1. Outline the acreage dedicated to the subject well by colored pencil or hachure marks on the plat below.
2. If more than one lease is dedicated to the well, outline each and identify the ownership thereof (both as to working interest and royalty).
3. If more than one lease of different ownership is dedicated to the well, have the interest of all owners been consolidated by communitization, unitization, force-pooling, etc.?
☐ Yes ☐ No If answer is "yes" type of consolidation _____

If answer is "no" list of owners and tract descriptions which have actually been consolidated. (Use reverse side of this form necessary.)

No allowable will be assigned to the well unit all interests have been consolidated (by communitization, unitization, forced-pooling, otherwise) or until a non-standard unit, eliminating such interest, has been approved by the Division.



OPERATOR CERTIFICATION

I hereby certify the the information contained herein is true and complete to the best of my knowledge and belief.

Signature

Printed Name

Betty Gildon

Position

Regulatory Analyst

Company

Enron Oil & Gas Company

Date

3/4/94

SURVEYOR CERTIFICATION

I hereby certify that the well location shown on this plat was plotted from field notes of actual surveys made by me or under my supervision, and that the same is true and correct to the best of my knowledge and belief.

Date Surveyed

OCTOBER 9, 1993

Signature & Seal of
Professional Surveyor



93-11-1500

RECEIVED

APR 24 1967

OCLE
OFFICE

DRILLING PROGRAM

Enron Oil & Gas Company
Mesa Verde 6 Federal No. 5
1980' FNL & 1980' FEL
Sec. 6, T24S, R32E
Lea County, New Mexico

1. Geologic Name of Surface Formation:

Permian

2. Estimated Tops of Important Geologic Markers:

Rustler	930'
Delaware	4600'
Bell Canyon	4580'
Cherry Canyon	5650'
Bone Spring	8500'

3. Estimated Depths of Anticipated Fresh Water, Oil or Gas:

Delaware	4600'	Water & Oil
----------	-------	-------------

No other formations are expected to give up oil, gas or fresh water in measurable quantities. The surface fresh water sands will be protected by setting 11-3/4" casing at 600' and circulating cement back to surface, and 8-5/8" casing will be set at 4600' with cement circulating back to surface.

Enron Oil & Gas Company
Mesa Verde 6 Federal No. 5
'1980' FNL & 1980' FEL
Sec. 6, T24S, R32E
Lea County, New Mexico

4. Casing Program:

<u>Hole Size</u>	<u>Interval</u>	<u>OD csg</u>	<u>Weight Grade Jt. Cond. Type</u>
14-3/4	0- 600'	11-3/4	42# H-40 A ST&C
11	0- 4600'	8-5/8	32# J-55 LT&C
7-7/8	0- 8750'	5-1/2	17# J-55 LT&C

Cementing Program:

11-3/4" Surface casing: Cement to surface with 275 sx of Class C + 2% CaCl₂ + 1/4#/sx flocele.

8-5/8" Intermediate: Cement to surface with 425 sx of Premium Plus lite + 15#/sx salt + 1/4#/sx Flocele and 300 sx Cl C + 2% CaCl₂

5-1/2" Prod casing: Cement with 350 sx 50/50 Cl H/Poz + 0.8% Halad 9 + 1/4#/sx Flocele. This cement slurry is designed to bring TOC to 3500'.

5. Minimum Specifications for Pressure Control:

The blowout preventer equipment (BOP) shown in Exhibit #1 will consist of a double ram-type (3000 psi WP) preventer and an annular preventer (3000 psi WP). Units will be hydraulically operated and the ram-type will be equipped with blind rams on top and drill pipe rams on bottom. All will be installed on the 11-3/4" surface casing and used continuously until TD is reached. All BOP's and accessory equipment will be tested to 1000 psi before drilling out of surface casing. Before drilling out of intermediate casing, the ram-type BOP and accessory equipment will be tested to 3000 psi and the annular to 70% of rated working pressure (2100 psi).

Pipe rams will be operationally checked each 24 hour period. Blind rams will be operationally checked on each trip out of the hole. These checks will be noted on the daily tour sheets. A 2" kill line and 4" choke line will be included in the drilling spool located below the ram-type BOP. Other accessories to the BOP equipment will include a kelly cock and floor safety valve (inside BOP) and choke lines and choke manifold with 3000 psi WP rating.

RECEIVED

APR 21 1997

OFFICE

ENRON OIL & GAS COMPANY

ATTACHMENT

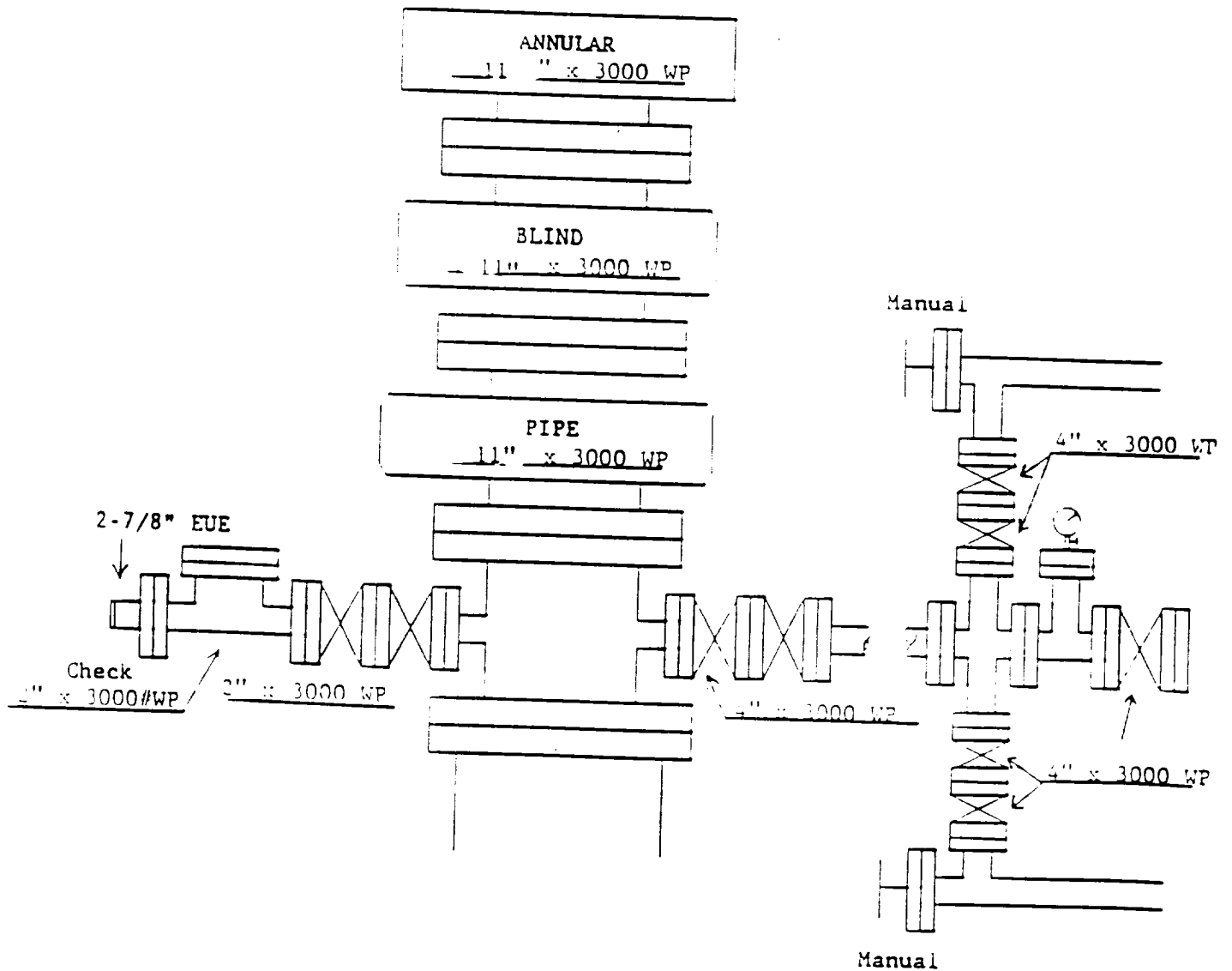


EXHIBIT #1