

N.M. OIL CONS. COMMISSION  
P.O. BOX 1980  
HOBBS, NEW MEXICO 88240  
UNITED STATES  
DEPARTMENT OF THE INTERIOR  
BUREAU OF LAND MANAGEMENTSUBMIT IN 7 LIGATE\*  
(Other instructions on  
reverse side)FORM APPROVED  
OMB NO. 1004-0136  
Expires: February 28, 1995

## APPLICATION FOR PERMIT TO DRILL OR DEEPEN

## 1a. TYPE OF WORK

DRILL ☒DEEPEN ☐

## b. TYPE OF WELL

OIL  
WELL ☒GAS  
WELL ☐OTHER ☐

## 2. NAME OF OPERATOR

Santa Fe Energy Operating Partners, L.P.

## 3. ADDRESS AND TELEPHONE NO.

550 W. Texas, Suite 1330, Midland, Texas 79709

## 4. LOCATION OF WELL (Report location clearly and in accordance with applicable State requirements.)\*

At surface

1980' FN., 660' FEL

At proposed prod. zone

## 14. DISTANCE IN MILES AND DIRECTION FROM NEAREST TOWN OR POST OFFICE\*

27 miles East of Loving, New Mexico

15. DISTANCE FROM PROPOSED\*  
LOCATION TO NEAREST  
PROPERTY OR LEASE LINE, FT.  
(Also to nearest drilg. unit line, if any)

660'

18. DISTANCE FROM PROPOSED LOCATION\*  
TO NEAREST WELL, DRILLING, COMPLETED,  
OR APPLIED FOR, ON THIS LEASE, FT.

## 16. NO. OF ACRES IN LEASE

480

## 19. PROPOSED DEPTH

8600'

17. NO. OF ACRES ASSIGNED  
TO THIS WELL

40

## 20. ROTARY OR CABLE TOOLS

Rotary

## 21. ELEVATIONS (Show whether DF, RT, GR, etc.)

3580 GR

Carlsbad Controlled Water Basin

## 22. APPROX. DATE WORK WILL START\*

4-25-94

## 23.

## PROPOSED CASING AND CEMENTING PROGRAM

SIZE OF HOLE	GRADE, SIZE OF CASING	WEIGHT PER FOOT	SETTING DEPTH	QUANTITY OF CEMENT
17-1/2"	H-40 13-3/8"	48.0	600'	600 sx to circulate
12-1/4"	K-55 8-5/8"	32.0	4550'	2150 sx to circulate
7-7/8"	K-55 5-1/2"	15.5 & 17.0	8600'	Tie back to 4400'

When propose to drill to a depth sufficient to test the Delaware formation for oil. If productive, 5-1/2" casing will be cemented at TD. If non-productive, the well will be plugged in a manner consistent with Federal Regulations. Specific programs as per Onshore Oil and Gas Order No. 1 are outlined in the following attachments.

## Drilling Program

Exhibit A - Operations Plan

Exhibit B - BOP and Choke Diagram

Exhibit C - Drilling Fluid Program

Exhibit D - Auxiliary Equipment

Exhibit E - Topo Map of Location

Exhibit F - Map Showing Existing Wells

Exhibit F (A) Plat of Location

Exhibit G - Well Site Layout

Surface Use and Operations Plan

IN ABOVE SPACE DESCRIBE PROPOSED PROGRAM: If proposal is to deepen, give data on present productive zone and proposed new productive zone. If proposal is to drill or deepen directionally, give pertinent data on subsurface locations and measured and true vertical depths. Give blowout preventer program, if any.

## 24.

SIGNED

Daniel Robeto

TITLE Division Drilling Engineer DATE March 22, 1994

(This space for Federal or State office use)

PERMIT NO.

APPROVAL DATE

Application approval does not warrant or certify that the applicant holds legal or equitable title to those rights in the subject lease which would entitle the applicant to conduct operations thereon.  
CONDITIONS OF APPROVAL, IF ANY:

APPROVED BY

S/Gary Bowers

TITLE

AREA MANAGER

DATE

4-22-94

\*See Instructions On Reverse Side

Title 18 U.S.C. Section 1001, makes it a crime for any person knowingly and willfully to make to any department or agency of the United States any false, fictitious or fraudulent statements or representations as to any matter within its jurisdiction.

RECEIVED

APR 23 1941

FOR HOBBS  
OFFICE

UNITED STATES  
DEPARTMENT OF THE INTERIOR  
BUREAU OF LAND MANAGEMENT

FORM APPROVED  
Budget Bureau No. 1004-0135  
Expires: March 31, 1993

5. Lease Designation and Serial No.  
NM-89174

6. If Indian, Allottee or Tribe Name

**SUNDRY NOTICES AND REPORTS ON WELLS**

Do not use this form for proposals to drill or to deepen or reentry to a different reservoir.  
Use "APPLICATION FOR PERMIT—" for such proposals

**SUBMIT IN TRIPLICATE**

7. If Unit or CA, Agreement Designation

Type of Well

☒ Oil Well ☐ Gas Well ☐ Other

8. Well Name and No.

Zia "6" Federal

2. Name of Operator

Santa Fe Energy Operating Partners, L.P.

9. API Well No.

1

3. Address and Telephone No.

550 W. Texas, Suite 1330, Midland, Texas 79701

10. Field and Pool, or Exploratory Area

Triste Draw, West Delaware

4. Location of Well (Footage, Sec., T., R., M., or Survey Description)

(H), 1980' FNL & 660' FEL, Sec. 6, T-24S, R-32E, Lea Co., N.M.

11. County or Parish, State

Lea, N.M.

**CHECK APPROPRIATE BOX(S) TO INDICATE NATURE OF NOTICE, REPORT, OR OTHER DATA**

TYPE OF SUBMISSION

TYPE OF ACTION

☒ Notice of Intent

☐ Subsequent Report

☐ Final Abandonment Notice

☐ Abandonment

☐ Recompletion

☐ Plugging Back

☐ Casing Repair

☐ Altering Casing

☐ Other

☒ Change of Plans

☐ New Construction

☐ Non-Routine Fracturing

☐ Water Shut-Off

☐ Conversion to Injection

☐ Dispose Water

(Note: Report results of multiple completion on Well Completion or Recompletion Report and Log form.)

13. Describe Proposed or Completed Operations (Clearly state all pertinent details, and give pertinent dates, including estimated date of starting any proposed work. If well is directionally drilled, give subsurface locations and measured and true vertical depths for all markers and zones pertinent to this work.)\*

Santa Fe Energy Operating Partners, L.P., requests a change in the access road for the subject well. We plan to utilize the existing and previously cleared dry hole pad and access road to the Jack Tank "6" Federal No.1 to gain access to our proposed location. The dry hole location is 330' east of our proposed well and the pads of the two wells will overlap. This plan has been discussed with Kathleen Boravek.

We also request the proposed Total Depth be amended from 8600' to 9900' to test the Bone Spring horizons. We plan to run 5-1/2" production casing as follows: 2000' of 17.0 ppf K-55 LT&C on bottom, followed by the remainder of 15.50 ppf K-55 LT&C.

No other changes are planned.

14. I hereby certify that the foregoing is true and correct

Signed

*Daniel Roberts*

Title Division Drilling Engineer

Date 4/19/94

(This space for Federal or State office use)

Approved by

Conditions of approval, if any:

Title

AREA MANAGER

Date

# OIL CONSERVATION DIVISION

**P.O. Box 2088**

**Santa Fe, New Mexico 87504-2088**

**DISTRICT I**

**P.O. Box 1980, Hobbs, NM 88240**

## DISTRICT II

P.O. Drawer DD, Artesia, NM 88210

## **DISTRICT II**

1000 Elc Brasas Rd., Astor, NM 87410

## WELL LOCATION AND ACREAGE DEDICATION PLAT

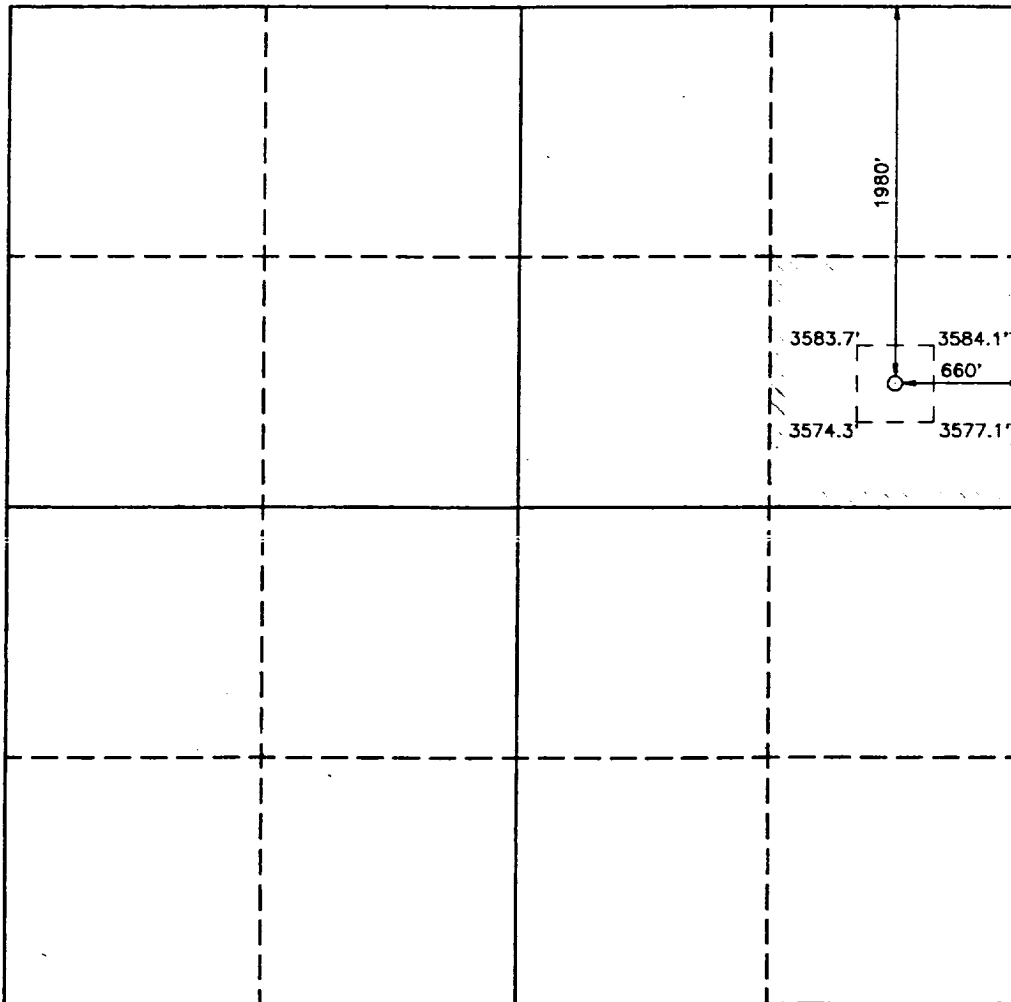
**All Distances must be from the outer boundaries of the section**

Operator SANTA FE ENERGY RESOURCES			Lease ZIA 6 FEDERAL		Well No. 1
Unit Letter H	Section 6	Township 24 SOUTH	Range 32 EAST NMPM	County LEA	
Actual Footage Location of Well:					
1980 feet from the NORTH line and 660 feet from the EAST line					
Ground Level Elev. 3580.0'	Producing Formation Delaware		Pool <del>Mesa Verde</del> Triste Draw, West (Delaware)		Dedicated Acreage: 40 Acres

1. Outline the acreage dedicated to the subject well by colored pencil or hatchure marks on the plat below.
2. If more than one lease is dedicated to the well, outline each and identify the ownership thereof (both as to working interest and royalty).
3. If more than one lease of different ownership is dedicated to the well, have the interest of all owners been consolidated by communitization, unitization, force-pooling, etc.?
- ☐ Yes      ☐ No      If answer is "yes" type of consolidation \_\_\_\_\_

If answer is "no" list of owners and tract descriptions which have actually been consolidated. (Use reverse side of this form necessary. \_\_\_\_\_)

No allowable will be assigned to the well unit all interests have been consolidated (by communitization, unitization, forced-pooling, otherwise) or until a non-standard unit, eliminating such interest, has been approved by the Division.



### OPERATOR CERTIFICATION

I hereby certify the the information  
contained herein is true and complete to the  
best of my knowledge and belief.

**Signature**

Daniel Roberts

Printed Name

Darrell Roberts

**Position**

Division Drilling Engineer

Company	Santa Fe Energy
---------	-----------------

Operating Partners, L.P.

Date \_\_\_\_\_

March 22, 1994

### SURVEYOR CERTIFICATION

I hereby certify that the well location shown on this plat was plotted from field notes of actual surveys made by me or under my supervision, and that the same is true and correct to the best of my knowledge and belief.

Date Surveyed

NOVEMBER 12, 1993

**Signature & Seal of Professional Surgeon**



Certificate No.	2000-01-0001	178
Issued To	RONALD J. WILSON	2226
Professional Seal		7977

93-11-2267

RECEIVED

APR 21 1994

OFFICE

**DRILLING PROGRAM**  
**SANTA FE ENERGY OPERATING PARTNERS, L.P.**  
**ZIA "6" FEDERAL NO. 1**

In conjunction with Form 3160-3, Application For Permit to Drill the subject well, Santa Fe Energy Operating Partners, L.P. submits the following ten items of pertinent information in accordance with Onshore Oil & Gas Order No. 1.

1. **Geologic Name of Surface Formation:** Alluvium

2. **Estimated Tops of Significant Geologic Markers:**

Rustler	700'
Base of Salt	4300'
Delaware Lime	4550'
Cherry Canyon	5400'
Brushy Canyon	6700'
Bone Spring	8310'
Total Depth	8600'

3. **The estimated depths at which water, oil, or gas formations are expected:**

Water	None expected in area
Oil	Lower Brushy Canyon @ 7800'

4. **Proposed Casing Program:** See Form 3160-3 and Exhibit A.

5. **Pressure Control Equipment:** See Exhibit B.

6. **Drilling Fluid Program:** See Exhibit C.

7. **Auxiliary Equipment:** A mud logging unit will be utilized to monitor penetration rate and hydrocarbon shows while drilling below the intermediate casing at 4550'.

8. **Testing, Logging, and Coring Program:**

Drill Stem Tests: None Planned.

Logging:

Dual Laterolog w/MSFL and Gamma Ray	4200'-8200'
Compensated Neutron/Litho-Density/Gamma Ray	4200'-8200'
Compensated Neutron/Gamma Ray (thru csg)	Surface-4200'

Coring: One - 60 ft conventional core in the Brushy Canyon.

RECEIVED

APR 23 1991

U.S. HOUSE  
OFFICE

**DRILLING PROGRAM**

Zia "6" Federal No. 1

Page 2

**9. Abnormal Conditions, Pressures, Temperatures, & Potential Hazards:**

No abnormal pressures or temperatures are anticipated. The estimated bottom hole temperature is 135° psi. No Hydrogen Sulfide or other hazardous gases or fluids have been encountered, reported or are known to exist at this depth in this area. No major lost circulation zones have been reported in the offsetting wells.

**10. Anticipated Starting Date and Duration of Operations:**

Road and location work will not begin until approval has been received from the BLM. The anticipated spud date is April 25, 1994. Once spudded the drilling operation should be completed in approximately 15 days. If the well is productive, an additional 30 days will be required for completion and testing before permanent facilities are installed.



RECEIVED

APR 23 1994

- JCS  
OFFICE

**EXHIBIT A**  
**OPERATIONS PLAN**  
SANTA FE ENERGY OPERATING PARTNERS, L.P.  
Zia "6" Federal No. 1  
Section 6, T-24-S,R-32-E  
Lea County, New Mexico

1. Drill a 17-1/2" hole to approximately 600'.
2. Run 13-3/8" 48.0 ppf H-40 ST&C casing. Cement with 600 sx Class "C" cement containing 2%  $\text{CaCl}_2$ . Run centralizers on every other joint above the shoe. Apply thread lock to bottom two joints and guide shoe.
3. Wait on cement twelve hours prior to cutting off.
4. Nipple up an annular BOP system and test casing to 600 psi. WOC twenty-four (24) hours prior to drilling out.
5. Drill a 12-1/4" hole to approximately 4550'.
6. Run 8-5/8" 32.0 ppf K-55 ST&C casing. Cement with 1900 sx Cl "C" Lite containing 12 pps salt and 1/4 pps celloflake followed by 250 sx Class "C" with 2%  $\text{CaCl}_2$ . Run guide shoe on bottom and float collar two joints from bottom. Centralize every other joint for bottom 400' of casing and place two centralizers in surface casing. Thread lock bottom 2 joints.
7. Wait on cement for twelve hours prior to cutting off.
8. Nipple up and install a 3000 psi. Double Ram and Annular BOP system with choke manifold. WOC 24 hours prior to drilling out.
9. Test BOP system to 3000 psi. Test casing to 1500 psi.
10. Drill 7-7/8" hole to 8600'. Run logs.
11. Either run and cement 2400' of 5-1/2" 17.0 ppg K-55 LT&C on bottom with the remainder of 5-1/2" 15.50 ppf K-55 LT&C casing or plug and abandon as per BLM requirements.

# PROPOSED 3-M BOPE AND CHOKE ARRANGEMENT

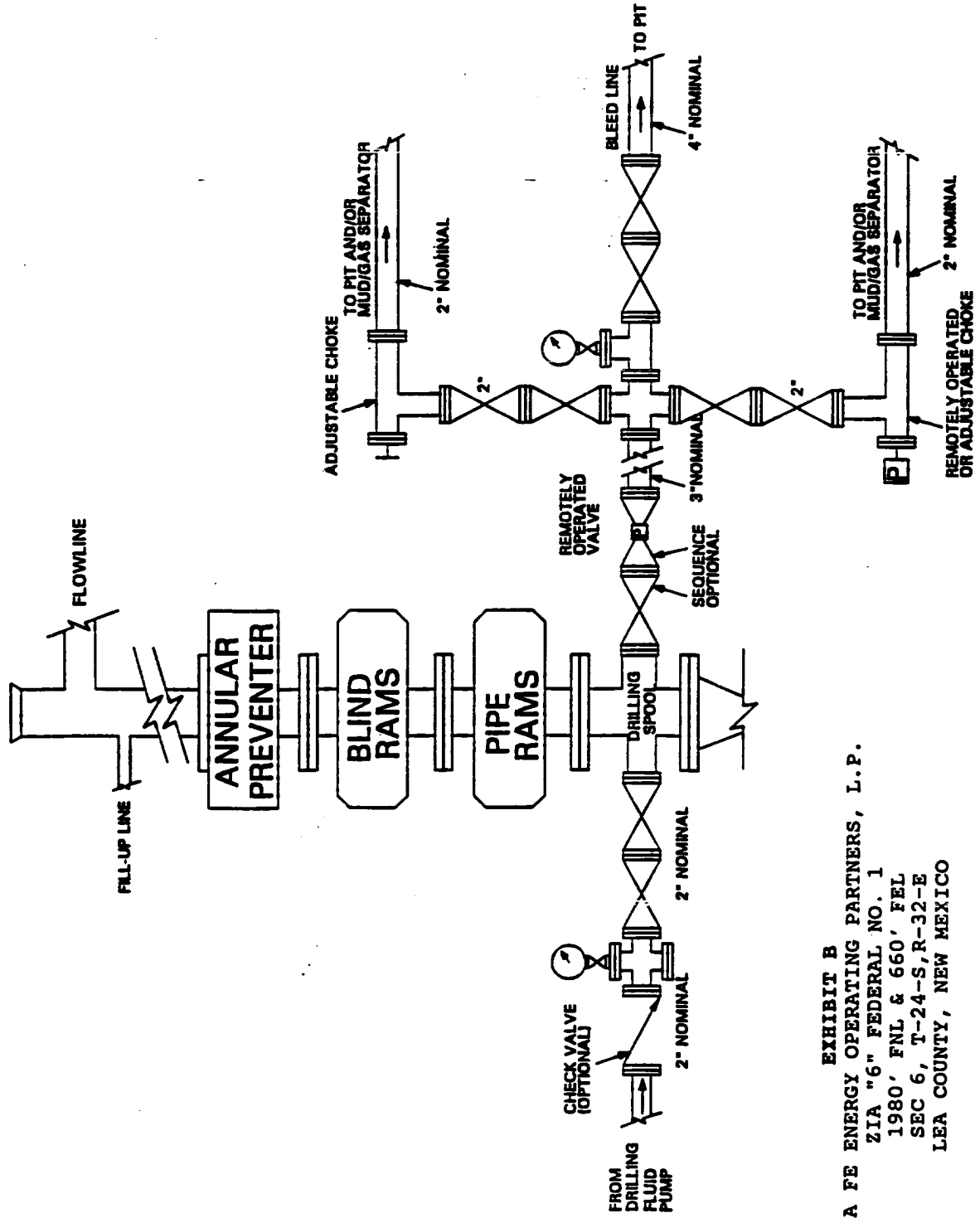


EXHIBIT B  
 SANTA FE ENERGY OPERATING PARTNERS, L.P.  
 ZIA "6" FEDERAL NO. 1  
 1980' FNL & 660' FEL  
 SEC 6, T-24-S, R-32-E  
 LEA COUNTY, NEW MEXICO

RECEIVED

SEP 2 1941

Woods  
OFFICE

W-200-2

77