

N.M. OIL CONS. COMMISSION

P.O. BOX 198

HOBBS, NEW MEXICO 88401

DEPARTMENT OF THE INTERIOR

BUREAU OF LAND MANAGEMENT

SUBMIT IN TR DATE*
(Other instructions on
reverse side)

Form approved.
Budget Bureau No. 1004-0136
Expires August 31, 1985

APPLICATION FOR PERMIT TO DRILL, DEEPEN, OR PLUG BACK

1a. TYPE OF WORK

DRILL ☒

DEEPEN ☐

PLUG BACK ☐

b. TYPE OF WELL

OIL
WELL ☒

GAS
WELL ☐

OTHER

SINGLE
ZONE ☒

MULTIPLE
ZONE ☐

2. NAME OF OPERATOR

POGO PRODUCING COMPANY

3. ADDRESS OF OPERATOR

P. O. BOX 10340, MIDLAND, TEXAS

4. LOCATION OF WELL (Report location clearly and in accordance with any State requirements.)*

At surface

1980' FNL AND 1650' FWL OF SECTION 5

At proposed prod. zone

14. DISTANCE IN MILES AND DIRECTION FROM NEAREST TOWN OR POST OFFICE*

15 MILES NORTHWEST OF JAL, NEW MEXICO

15. DISTANCE FROM PROPOSED*
LOCATION TO NEAREST
PROPERTY OR LEASE LINE, FT.

(Also to nearest drlg. unit line, if any)

1980'

16. NO. OF ACRES IN LEASE

1961.36

17. NO. OF ACRES ASSIGNED
TO THIS WELL

40

18. DISTANCE FROM PROPOSED LOCATION*
TO NEAREST WELL, DRILLING, COMPLETED,
OR APPLIED FOR, ON THIS LEASE, FT.

--

19. PROPOSED DEPTH

9000'

20. ROTARY OR CABLE TOOLS

ROTARY

21. ELEVATIONS (Show whether DF, RT, GR, etc.)

3452' GR

22. APPROX. DATE WORK WILL START*

UPON APPROVAL

23.

PROPOSED CASING AND CEMENTING PROGRAM

SIZE OF HOLE	SIZE OF CASING	WEIGHT PER FOOT	SETTING DEPTH	QUANTITY OF CEMENT
17-1/2"	13-3/8"	54.5#	550'	SUFFICIENT TO CIRCULATE
11"	8-5/8"	32#	5275'	SUFFICIENT TO CIRCULATE
7-7/8"	5-1/2"	17#	9000'	TO TIE BACK 200' INTO 8-5/8

AFTER SETTING PRODUCTION CASING, PAY ZONE WILL BE PERFORATED
AND STIMULATED AS NECESSARY.

SEE ATTACHED FOR: SUPPLEMENTAL DRILLING DATA

BOP SKETCH

SURFACE USE AND OPERATIONS PLAN

HYDROGEN SULFIDE DRILLING OPERATIONS PLAN

OPER. OGRID NO. 17891

PROPERTY NO. 15890

POOL CODE 916037

EFF. DATE 11/12/94

API NO. 30-05-30724

IN ABOVE SPACE DESCRIBE PROPOSED PROGRAM: If proposal is to deepen or plug back, give data on present productive zone and proposed new productive zone. If proposal is to drill or deepen directionally, give pertinent data on subsurface locations and measured and true vertical depths. Give blowout preventer program, if any.

24.

SIGNED

Richard L. Wright
Richard L. Wright

TITLE

Division Operations Mgr.

DATE

October 7, 1994

(This space for Federal or State office use)

PERMIT NO.

APPROVAL DATE

APPROVED BY

(ORIG. SGD.) RICHARD L. MANUS

TITLE

AREA MANAGER

CONDITIONS OF APPROVAL, IF ANY:

DATE

APPROVAL OF THIS APPLICATION DOES NOT WARRANT
OR CERTIFY THAT THE APPLICANT HOLDS LEGAL OR
EQUITABLE TITLE TO THOSE RIGHTS IN THE BLM ON REVERSE SIDE
LEASE WHICH WOULD ENTITLE THE APPLICANT TO
CONDUCT OPERATIONS THEREON

STATEMENT ACCEPTING RESPONSIBILITY FOR OPERATIONS

ANTELOPE 5 FEDERAL WELL NO. 1
1980'FNL & 1650'FWL SEC.5, T.24 S., R.35 E.
LEA COUNTY, NEW MEXICO

Pogo Producing Company
P. O. Box 10340
Midland, Texas 79702

The undersigned accepts all applicable terms, conditions, stipulations, and restrictions concerning operations conducted on the leased land, or portions thereof, as described below:

Lease Number: NM-14164.

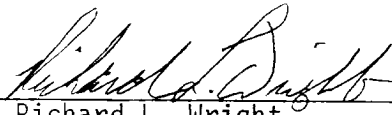
Legal Description of Land: SE $\frac{1}{4}$ NW $\frac{1}{4}$ of Section 5, T.24 S., R.35 E.,
Lea County, New Mexico, and access road.

Formation(s): Delaware and other zones which may be tested and/or produced.

Bond Coverage: Pogo Producing Company's Nationwide Bond.

BLM Bond File Number: WY-0405.

Date: October 7, 1994



Richard L. Wright
Division Operations Manager

DISTRICT I
P.O. Box 1980, Hobbs, NM 88240

DISTRICT II
P.O. Drawer DD, Artesia, NM 88210

DISTRICT III
1000 Rio Brazos Rd. Aztec, NM 87410

State of New Mexico
Energy, Minerals and Natural Resources Department

Form C-102
Revised February 10, 1994
Instruction on back
Submit to Appropriate District Office
State Lease - 4 Copies
Fee Lease - 3 Copies

OIL CONSERVATION DIVISION

P.O. Box 2088
Santa Fe, New Mexico 87504-2088

☐ AMENDED REPORT

WELL LOCATION AND ACREAGE DEDICATION PLAT

API Number	Pool Code	Pool Name WILDCAT
Property Code	Property Name ANTELOPE 5 FEDERAL	Well Number 1
OGRID No. 17891	Operator Name POGO PRODUCING COMPANY	Elevation 3452

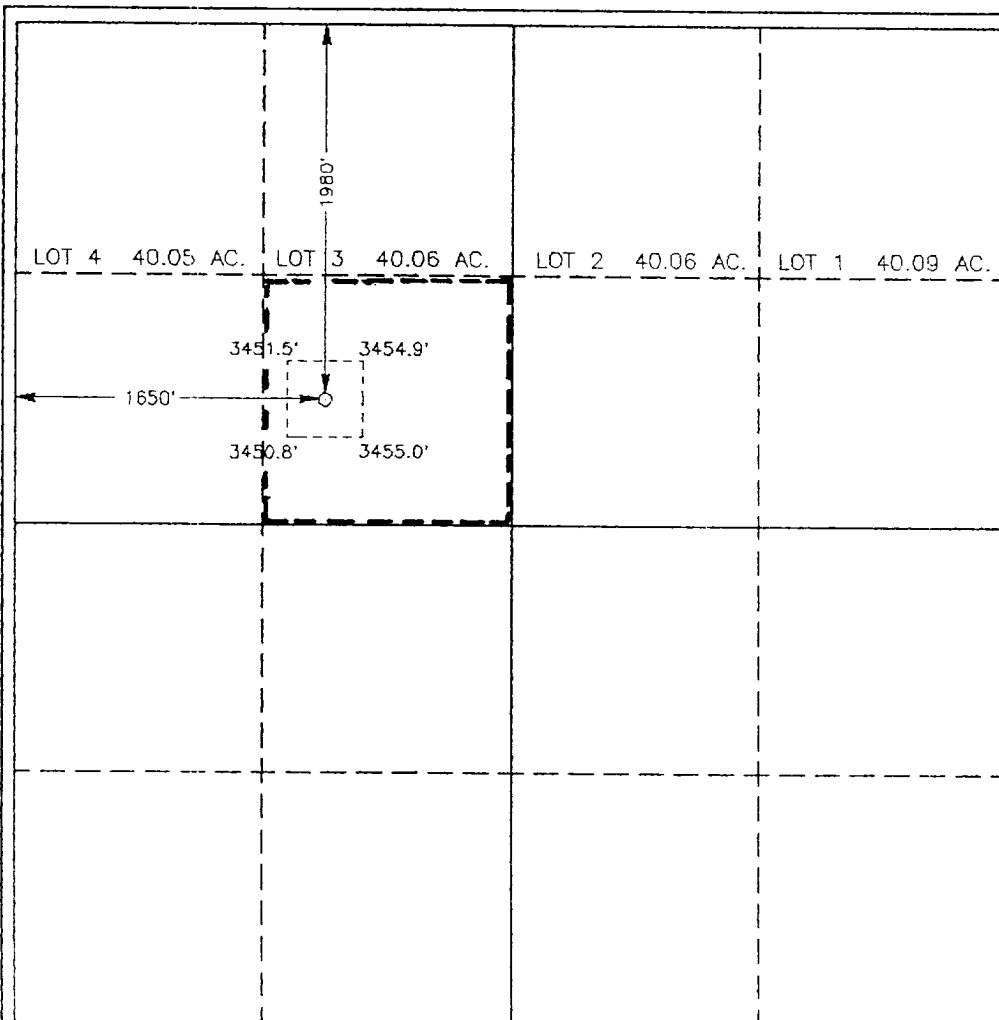
Surface Location

UL or lot No. F	Section 5	Township 24 S	Range 35 E	Lot Idn	Feet from the 1980	North/South line NORTH	Feet from the 1650	East/West line WEST	County LEA
--------------------	--------------	------------------	---------------	---------	-----------------------	---------------------------	-----------------------	------------------------	---------------

Bottom Hole Location If Different From Surface

UL or lot No.	Section	Township	Range	Lot Idn	Feet from the	North/South line	Feet from the	East/West line	County
Dedicated Acres 40	Joint or Infill N	Consolidation Code	Order No.						

NO ALLOWABLE WILL BE ASSIGNED TO THIS COMPLETION UNTIL ALL INTERESTS HAVE BEEN CONSOLIDATED
OR A NON-STANDARD UNIT HAS BEEN APPROVED BY THE DIVISION



OPERATOR CERTIFICATION

I hereby certify the this information
contained herein is true and complete to the
best of my knowledge and belief.

Richard L. Wright
Signature

Richard L. Wright

Printed Name

Division Operations Mgr.

Title

October 7, 1994

Date

SURVEYOR CERTIFICATION

I hereby certify that the well location shown
on this plat was plotted from field notes of
actual surveys made by me or under my
supervision and that the information is true and
correct.

REGISTERED LAND SURVEYOR
OCTOBER 3, 1994
Date Surveyed
3239
Signature Seal of
Professional Surveyor
RONALD J. EIDSON
W.O. Num. 94-11-1682

Certificate No. JOHN W. WEST, 676
RONALD J. EIDSON, 3239
GARY L. JONES, 7977

SUPPLEMENTAL DRILLING DATA
POGO PRODUCING COMPANY
ANTELOPE 5 FEDERAL WELL NO. 1

1. SURFACE FORMATION: Quaternary.

2. ESTIMATED TOPS OF GEOLOGIC MARKERS:

Anhydrite	834'
Delaware Lime	5260'

3. ANTICIPATED POSSIBLE HYDROCARBON BEARING ZONES:

Delaware	Oil
----------	-----

4. PROPOSED CASING AND CEMENTING PROGRAM:

CASING SIZE	SETTING DEPTH		WEIGHT	GRADE	JOINT
	FROM	TO			
13-3/8"	0	550'	54.5#	J-55	ST&C
8-5/8"	0	4400'	32#	J-55	ST&C
8-5/8"	4400'	5275'	32#	S-80	ST&C
5-1/2"	0	1000'	17#	N-80	LT&C
5-1/2"	1000'	8000'	17#	J-55	LT#C
5-1/2"	8000'	9000'	17#	N-80	LT&C

MINIMUM

DESIGN FACTORS: COLLAPSE 1.1 BURST 1.1 TENSION 1.2

13-3/8" casing to be cemented with 470 sacks of light cement tailed in with 200 sacks of premium cement with 2% CaCl. Cement to circulate.

8-5/8" casing to be cemented with 1300 sacks of light cement with 10% salt tailed in with 200 sacks of premium cement with 1% CaCl. Cement to circulate.

5-1/2" production casing is to be cemented with approximately 500 sacks

of light cement followed by 400 sacks of premium cement. Cement to tie back 200 feet into the 8-5/8" casing.

If, during drilling operations, need for stage cementing of casing is indicated, staging tool(s) will be run and positioned to best suit hole conditions at time casing is run.

Cement volumes may be adjusted and cement may have lost circulation and/or other additives depending on hole conditions at the time casing is run.

5. PRESSURE CONTROL EQUIPMENT:

Blowout prevention equipment, while drilling the 11" hole, will be either a 3000 psi working pressure double ram type preventer or a 3000 psi working pressure annular type preventer.

Blow out prevention equipment, while drilling below the 8-5/8" casing seat, will be a 3000 psi working pressure BOP stack. A BOP sketch is attached.

6. CIRCULATING MEDIUM:

Surface to 550 feet: Fresh water base fluid with gel and paper sweeps for hole cleaning.
Mud wgt 8.4 ppg - 8.6 ppg
Viscosity 28 - 32 seconds per quart.

550 feet to 5275 feet: Brine water base fluid with salt gel and paper sweeps for hole cleaning.
Mud wgt 10.0 ppg - 10.2 ppg
Viscosity 28 - 32 seconds per quart.

5275 feet to T.D.: Fresh water base fluid with gel and paper sweeps for hole cleaning.
Mud wgt 8.4 ppg - 8.6 ppg
Viscosity 28 - 32 seconds per quart.

7. AUXILIARY EQUIPMENT:

A mud logging trailer will be in use while drilling below the interdediate casing.

8. TESTING, LOGGING, AND CORING PROGRAM:

Drill stem tests will be made when well data indicate a test is warranted.

It is planned that electric logs will include GR-CNL-Density logs and GR-DLL logs.

No coring is planned.

9. ABNORMAL PRESSURES, TEMPERATURES, OR HYDROGEN SULFIDE GAS:

Bottom hole pressures should be normal. Expected bottom hole pressure is approximately 3700 psi.

Bottom hole temperature should be normal. Expected bottom hole temperature is approximately 125 degrees Fahr.

It is not expected that any hydrogen sulfide bearing zone will be penetrated while conducting the proposed drilling operations. However, as a precautionary measure, drilling operations will be in accordance with the attached "HYDROGEN SULFIDE DRILLING OPERATIONS PLAN".

10. ANTICIPATED STARTING DATE:

It is planned that operations will commence upon approval of this application, with drilling and completion operations lasting about 30 days.

POGO PRODUCING COMPANY
ANTELOPE 5 FEDERAL NO. 1

