

UNITED STATES MEXICO
DEPARTMENT OF THE INTERIOR
BUREAU OF LAND MANAGEMENT

SUBMIT IN TRI ATE*
(Other instructions on
reverse side)

Form approved.
Budget Bureau No. 1004-0136
Expires August 31, 1985

APPLICATION FOR PERMIT TO DRILL, DEEPEN, OR PLUG BACK

1a. TYPE OF WORK

DRILL ☒

DEEPEN ☐

PLUG BACK ☐

b. TYPE OF WELL

OIL
WELL ☒

GAS
WELL ☐

OTHER

SINGLE
ZONE ☐

MULTIPLE
ZONE ☐

2. NAME OF OPERATOR

Samedan Oil Corporation

3. ADDRESS OF OPERATOR

12600 Northborough, #250, Houston, Texas 77067

4. LOCATION OF WELL (Report location clearly and in accordance with any State requirements.)

At surface

1650 FSL & 660 FWL
At proposed prod. zone

14. DISTANCE IN MILES AND DIRECTION FROM NEAREST TOWN OR POST OFFICE*

10 Miles SW of Eunice, NM

15. DISTANCE FROM PROPOSED*

LOCATION TO NEAREST
PROPERTY OR LEASE LINE, FT.
(Also to nearest drig. unit line, if any) 330

16. NO. OF ACRES IN LEASE

1396

17. NO. OF ACRES ASSIGNED
TO THIS WELL

40

18. DISTANCE FROM PROPOSED LOCATION*

TO NEAREST WELL, DRILLING, COMPLETED,
OR APPLIED FOR, ON THIS LEASE, FT.

None

19. PROPOSED DEPTH

7250

20. ROTARY OR CABLE TOOLS

Rotary

21. ELEVATIONS (Show whether DF, RT, GR, etc.)

3325 GR

22. APPROX. DATE WORK WILL START*

Upon Approval of APD

23. PROPOSED CASING AND CEMENTING PROGRAM

SIZE OF HOLE	SIZE OF CASING	WEIGHT PER FOOT	SETTING DEPTH	QUANTITY OF CEMENT
12 1/4	9 5/8	36#	1150	650 sx "C" CIRCULATE
8 3/4	7	26#	7250	1350 sx "C" Light (TIE BACK)

SEE ATTACHMENTS FOR: Supplemental Drilling Data
BOP Sketch
Surface Use and Operations Plan

After setting production casing, pay zone will be perforated and stimulated as necessary.

OPER. OGRID NO. 20153
PROPERTY NO. 16069
POOL CODE 96313
EFF. DATE 11-23-94
API NO. 30-025-32743

RECEIVED
SEP 1 11 01 AM '94

IN ABOVE SPACE DESCRIBE PROPOSED PROGRAM: If proposal is to deepen or plug back, give data on present productive zone and proposed new productive zone. If proposal is to drill or deepen directionally, give pertinent data on subsurface locations and measured and true vertical depths. Give blowout preventer program, if any.

24. SIGNED Judy Kronenberg TITLE Division Production Clerk DATE 08/30/94
(This space for Federal or State office use)

PERMIT NO.

APPROVAL DATE

APPROVED BY /s/ B. L. Lacombe
CONDITIONS OF APPROVAL, IF ANY:

TITLE

AREA MANAGER

DATE

11-18-94

APPROVAL OF THIS APPLICATION DOES NOT WARRANT
OR CERTIFY THAT THE APPLICANT HOLDS LEGAL OR
EQUITABLE TITLE TO THOSE RIGHTS IN THE APPLICANT'S
LEASE WHICH WOULD ENTITLE THE APPLICANT TO

APPROVAL SUBJECT TO
GENERAL REQUIREMENTS AND
SPECIAL STIPULATIONS
ATTACHED

Title 18 U.S.C. Section 1001, makes it a crime for any person knowingly and willfully to make to any department or agency of the United States any false, fictitious or fraudulent statements or representations as to any matter within its jurisdiction.

DISTRICT I
P.O. Box 1980, Hobbs, NM 88240

State of New Mexico
Energy, Minerals and Natural Resources Department

Form C-102
Revised February 10, 1994
Instruction on back
Submit to Appropriate District Office
State Lease - 4 Copies
Fee Lease - 3 Copies

DISTRICT II
P.O. Drawer DD, Artesia, NM 88210

OIL CONSERVATION DIVISION

P.O. Box 2088
Santa Fe, New Mexico 87504-2088

DISTRICT III
1000 Rio Brazos Rd., Aztec, NM 87410

☐ AMENDED REPORT

WELL LOCATION AND ACREAGE DEDICATION PLAT

API Number 3D-025-32743	Pool Code 96313	Pool Name North Teague Abo Drinkard
Property Code 16069	Property Name LANGUE MATTIX 4 Federal	Well Number 1
OGRID No. 020153	Operator Name SAMEDAN OIL CORPORATION	Elevation 3325'

Surface Location

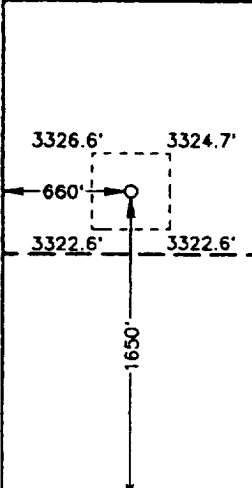
UL or lot No.	Section	Township	Range	Lot Idn	Feet from the	North/South line	Feet from the	East/West line	County
L	4	23 S	37 E		1650	SOUTH	660	WEST	LEA

Bottom Hole Location If Different From Surface

UL or lot No.	Section	Township	Range	Lot Idn	Feet from the	North/South line	Feet from the	East/West line	County

Dedicated Acres	Joint or Infill	Consolidation Code	Order No.
40			

NO ALLOWABLE WILL BE ASSIGNED TO THIS COMPLETION UNTIL ALL INTERESTS HAVE BEEN CONSOLIDATED
OR A NON-STANDARD UNIT HAS BEEN APPROVED BY THE DIVISION

<p>LOT 4 - 44.06AC LOT 3 - 44.20AC LOT 2 - 44.32AC LOT 1 - 44.46AC</p>				<p>OPERATOR CERTIFICATION</p> <p>I hereby certify the the information contained herein is true and complete to the best of my knowledge and belief.</p> <p><i>Judy Throneberry</i> Signature Judy Throneberry Printed Name Div Prod Clerk Title 08/30/94 Date</p>	
				<p>SURVEYOR CERTIFICATION</p> <p>I hereby certify that the well location shown on this plat was plotted from field notes of actual surveys made by me or under my supervision, and that the same is true and correct to the best of my belief.</p> <p>AUGUST 23, 1994 Date Surveyed <i>Ronald J. Eidson</i> Signature & Seal of Professional Surveyor W.O. Num 94-11-1500 Certificate No. JOHN W. WEST, 676 RONALD J. EIDSON, 3239</p>	

SUPPLEMENTAL DRILLING DATA

SAMEDAN OIL CORPORATION
LANGLIE MATTIX 4 #1
SECTION 4, T-23-S, R-37-E
LEA COUNTY, NEW MEXICO

1. SURFACE FORMATION: Quaternary

2. ESTIMATED TOPS OF GEOLOGICAL MARKERS:

Penrose	3500'
Grayburg	3610'
San Andres	3900'
Glorieta	5050'
Paddock	5240'
Blinebry	5500'
Tubb	6100'
Drinkard	6230'
Abo	6610'

3. ANTICIPATED HYDROCARBON BEARING ZONES:

Glorieta	Tubb
Paddock	Drinkard
Blinebry	Abo

4. PROPOSED CASING AND CEMENTING PROGRAM:

<u>CASING SIZE</u>	<u>FROM</u>	<u>TO</u>	<u>WEIGHT</u>	<u>GRADE</u>	<u>JOINT</u>
9 5/8"	0	1150	36	J-55	ST&C
7"	0	7250	26	J-55	LT&C

Equivalent or adequate grades and weights of casing may be substituted at time casing is run, depending on availability.

9 5/8" casing will be cemented with a lead slurry of 450 sacks Class C cement with 4% gel, 1/4# Celloflake/sk and 2% CaCl₂. Tail with 200 sacks Class C cement with 2% CaCl₂. Cement to circulate to surface.

7" casing will be cemented with a lead slurry of 750 sacks Class C Light cement (65:35:6) containing 5% salt/sk and 1/4# Celloflake per sack. Tail with 600 sacks Class H 50/50 Poz with 2% gel containing 0.6% FLA, 0.3% cement dispersant and 0.2% SMS free water control. Cement is designed to circulate to surface. At a minimum, cement should be above the top of the Penrose injection at 3550'.

Cement volumes and additives may be modified based on well data.

5. PRESSURE CONTROL EQUIPMENT

Blowout equipment while drilling below the 9 5/8" casing seat will be a 3000 psi working pressure BOP stack with annular preventer. A BOP sketch is attached.

6. CIRCULATING MEDIUM:

Surface to 1150': Fresh water spud mud. Viscosity of 36 - 38 as required for hole cleaning.

1150' to 5000': Drill out from under surface with brine water circulating the reserve pit with a viscosity of 28 - 30 and a mud weight of 9.8 to 10.1.

5000' to 6900': Drill with brine water circulating the reserve pit. If sufficient samples cannot be obtained, return to the steel pits and add salt water gel for a viscosity of 30 - 32 and add starch for a water loss of 20 - 25.

6900' to 7250': At 6900', add salt water gel to the system to increase viscosity prior to logging. Reduce water loss to 20 - 25. This should assure sufficient mud to allow the well to be logged.

7. AUXILIARY EQUIPMENT:

A mud logging trailer will be in used when drilling below 5000'.

8. TESTING, LOGGING AND CORING PROGRAMS:

No drill stem tests are planned, however a drill stem test may be performed if well data indicates a test is warranted.

Electric logs will include CNL-FDC-GR and DLL-MSFL-GR.

No coring is planned.

9. ABNORMAL PRESSURES, TEMPERATURES OR HYDROGEN SULFIDE GAS:

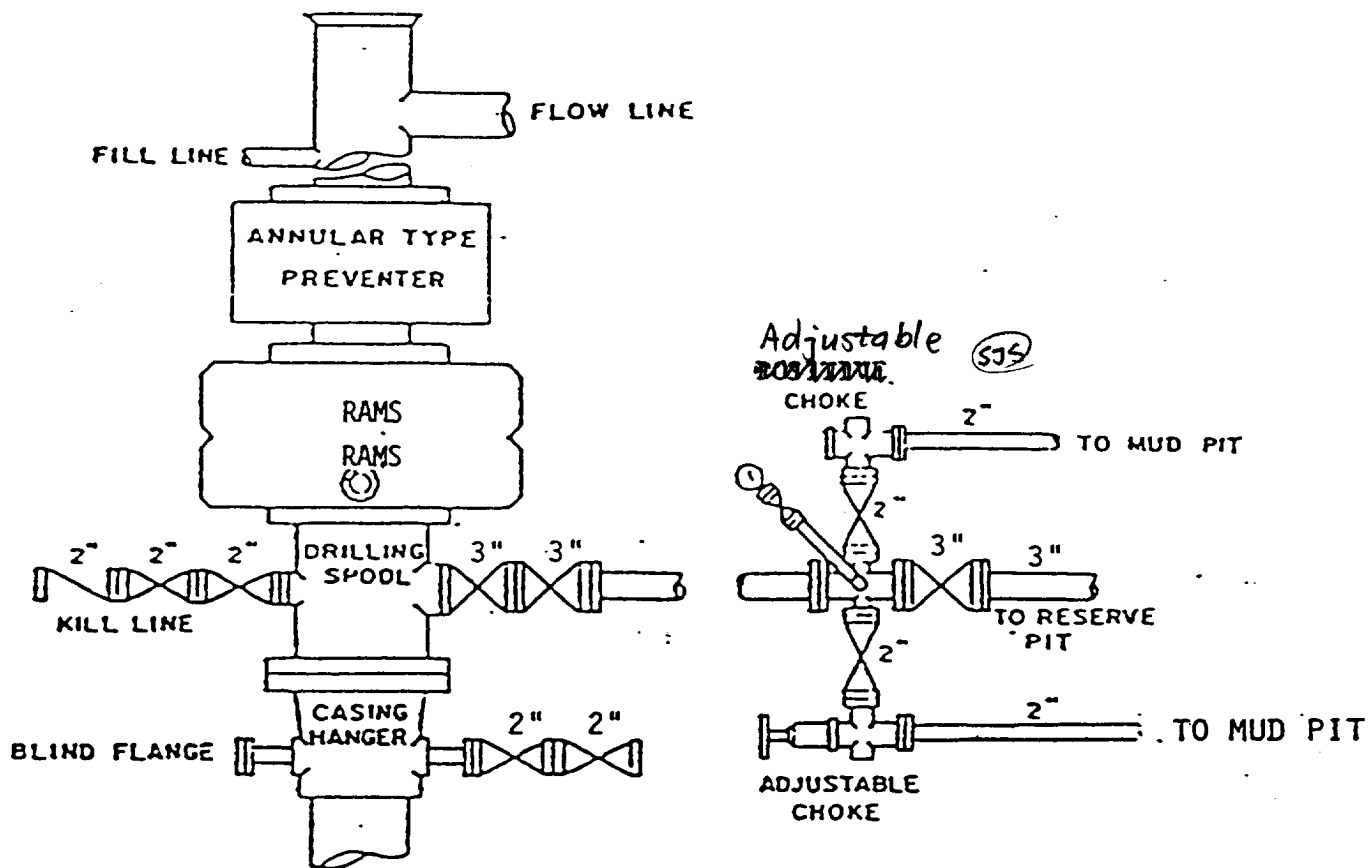
Water flows are possible in the salt section from 1200' to 2500' and have been encountered in wells drilled by Texaco to the south. These flows typically deplete within 24 hours. Offsetting injection in the Penrose from 3550' to 3644' could cause abnormal pressure when drilling this section of the hole.

No known drilling problems have been encountered below this depth.

Langlie Mattix 4 #1
Page 3:

10. ANTICIPATED STARTING DATE:

Drilling operations should begin within 30 days after approval of this application. Drilling and completion operations should be completed within 90 days after spudding.



BOP STACK

3000 PSI WORKING PRESSURE

BOP ARRANGEMENT

8/21/95

177