

DISTRICT I
P. O. Box 1980, Hobbs, NM 88240

DISTRICT II
P. O. Drawer DD, Artesia, NM 88210

DISTRICT III
1000 Rio Brazos Rd., Artesia, NM 87410

DISTRICT IV
P. O. Box 2088, Santa Fe, NM 87504-2088

State of New Mexico
Energy, Minerals and Natural Resources Department

OIL CONSERVATION DIVISION

P.O. Box 2088
Santa Fe, NM 87504-2088

Form C-102
Revised February 10, 1994

Instructions on back

Submit to Appropriate District Office

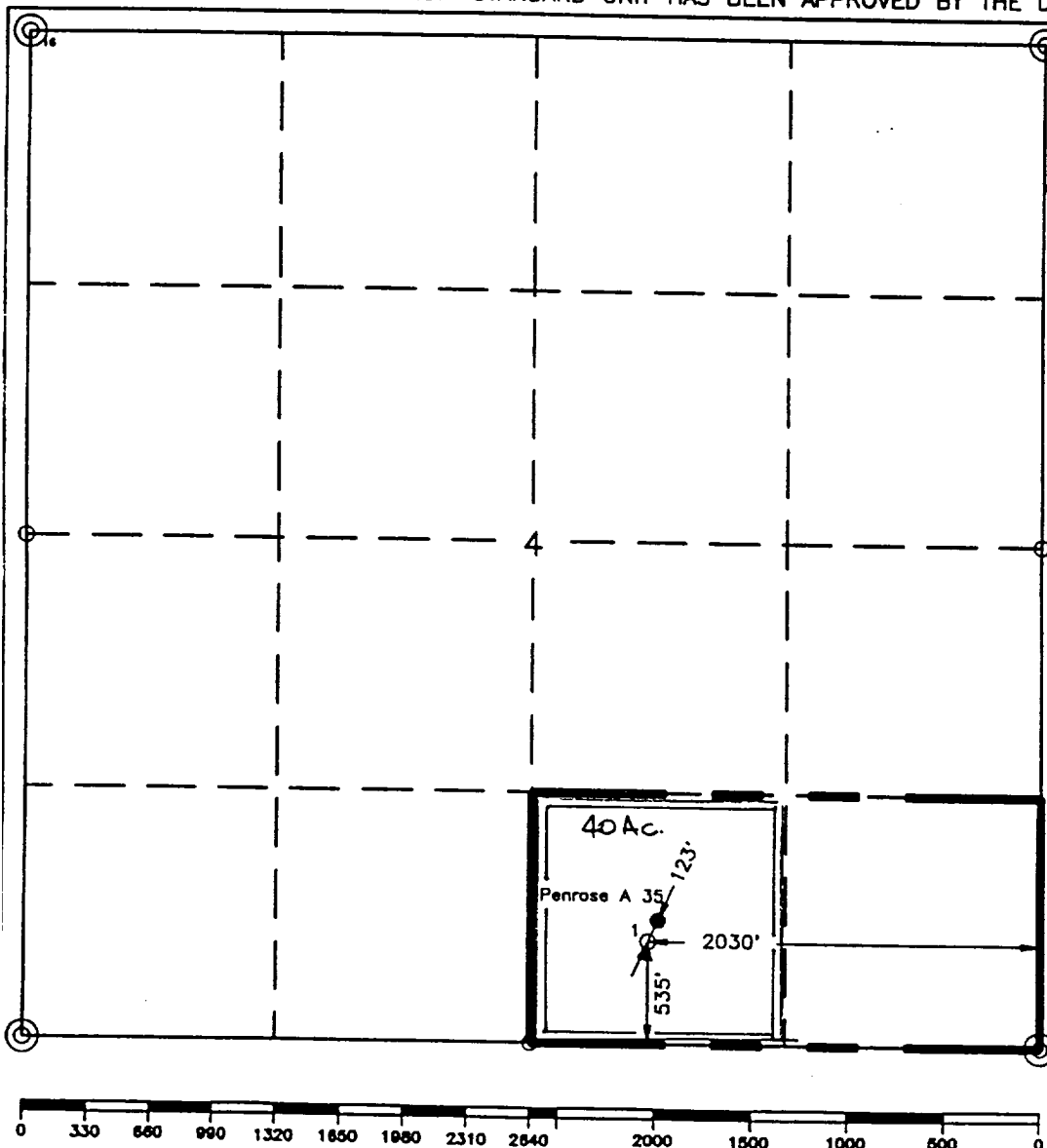
State Lease-4 copies
Fee Lease-3 copies

WELL LOCATION AND ACREAGE DEDICATION PLAT

☐ AMENDED REPORT

1 API Number 30-025-32902		2 Pool Code 96315		3 Pool Name North Teague Tubb Assoc.			
4 Property Code 11867		5 Property Name R. R. Sims "B"			6 Well Number 1		
7 OGRID No. 22351		8 Operator Name TEXACO EXPLORATION & PRODUCTION, INC.			9 Elevation 3314'		
10 Surface Location							
UL or lot no. 0	Section 4	Township 23-S	Range 37-E	Lot Idn 535'	Feet from the North/South line South 2030'	East/West line East	County Lea
11 Bottom Hole Location If Different From Surface							
UL or lot no.	Section	Township	Range	Lot Idn	Feet from the North/South line	Feet from the East/West line	County
12 Dedicated Acres 40		13 Joint or Infill		14 Consolidation Code		15 Order No.	

NO ALLOWABLE WILL BE ASSIGNED TO THIS COMPLETION UNTIL ALL INTERESTS HAVE BEEN CONSOLIDATED
OR A NON-STANDARD UNIT HAS BEEN APPROVED BY THE DIVISION.



16 OPERATOR CERTIFICATION	
I hereby certify that the information contained herein is true and complete to the best of my knowledge and belief.	
Signature <i>Paula S. Ives</i>	
Printed Name Paula S. Ives	
Position Engineer's Assistant	
Company Texaco Expl. & Prod. Inc.	
Date 7-11-97	
17 SURVEYOR CERTIFICATION	
I hereby certify that the well location shown on this plat was plotted from field notes of actual surveys made by me or under my supervision, and that the same is true and correct to the best of my knowledge and belief.	
Date Surveyed February 17, 1995	
Signature & Seal of Professional Surveyor <i>John S. Piper</i>	
Certificate No. 7254 John S. Piper	
Sheet	

○ = Staked Location ● = Producing Well ■ = Injection Well ▲ = Water Control Well