

DISTRICT I
P.O. Box 1980, Hobbs, NM 88241-1980

State of New Mexico
Energy, Minerals and Natural Resources Department

Form C-107
Revised 4-1-91

DISTRICT II
P.O. Drawer DD, Artesia, NM 88211-0719

OIL CONSERVATION DIVISION

DISTRICT III
1000 Rio Brazos Rd, Aztec, NM 87410

P.O. Box 2088
Santa Fe, New Mexico 87504-2088

Filing Instructions
Bottom of Page

APPLICATION FOR MULTIPLE COMPLETION

Operator	Address
TEXACO EXPLORATION + PRODUCTION	BOX 730; HOBBS, NM 88240
Lease	Well No. Unit Ltr. - Sec - Twp - Rge County
R.R. SIMS "B"	1 0-4-23S-37E LEA COUNTY

All applicants for multiple completion must complete Items 1 and 2 below.

1. The following facts are submitted:	Upper Zone	Lower Zone
a. Name of Pool and Formation	NORTH TEAGUE LOWER PADDOCK-BLINEBRY ASS.	NORTH TEAGUE TUBB-ASSOCIATED
b. Top and Bottom of Pay Section (Perforations)	5679'-5872' 5720'-5952'	6116'-6250'
c. Type of production (Oil or Gas)	OIL	GAS
d. Method of Production (Flowing or Artificial Lift)	FLOW	FLOW
e. Daily Production <input type="checkbox"/> Actual <input checked="" type="checkbox"/> Estimated Oil Bbls. Gas MCF Water Bbls.	10 OIL 400 GAS 3 WATER	25 OIL 1200 GAS 4 WATER

2. The following must be attached:

- Diagrammatic Sketch of the Multiple Completion, showing all casing strings, including diameters and setting depths, centralizers and/or turbolizers and location thereof, quantities used and top of cement, perforated intervals, tubing strings, including diameters and setting depth, location and type of packers and side door chokes, and such other information as may be pertinent.
- Plat showing the location of all wells on applicant's lease, all offset wells on offset leases, and the names and addresses of operators of all leases offsetting applicant's lease.
- Electrical log of the well or other acceptable log with tops and bottoms of producing zones and intervals of perforation indicated thereon. (If such log is not available at the time application is filed it shall be submitted as provided by Rule 112-A.)

OPERATOR:

I hereby certify above information is true and complete to best of my knowledge, and belief.

Signature

Printed Name & Title DARRELL CARRIGER

Date 7/25/95 Telephone (505) 397-0426

OIL CONSERVATION DIVISION

Approved by: ORIGINAL SIGNATURE DIVISION DIRECTOR

Title:

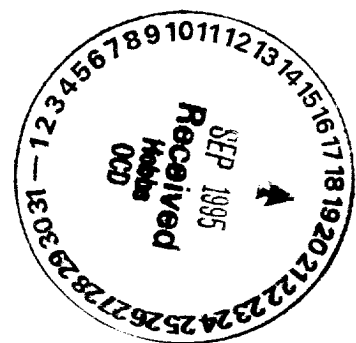
Date:

OCT 02 1995

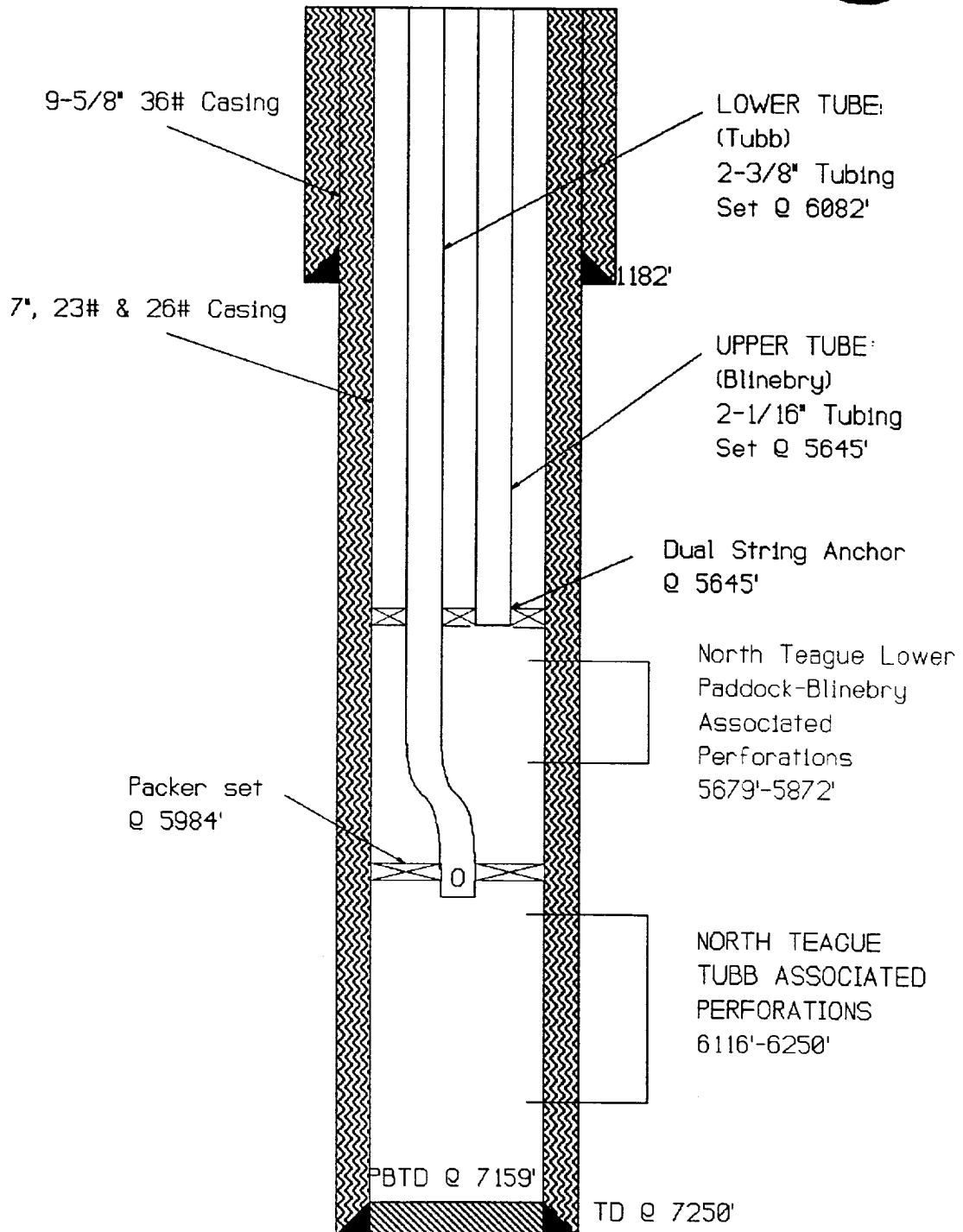
NOTE: If the proposed multiple completion will result in an unorthodox well location and/or a non-standard proration unit in one or more of the producing zones, then separate application for approval of the same should be filed simultaneously with this application.

FILING INSTRUCTIONS:

- District Approval -- See rule 112-A-B -- Submit 4 copies of Form C-107 with attachments to appropriate district office.
- Division Director Administrative Approval -- See Rule 112-C -- Submit 2 copies of Form C-107 with attachments to Division office in Santa Fe and 2 copies of Form C-107 with attachments to appropriate district office.
- Multiple completions not qualifying for District or Division Director approval may be set for hearing as outlined in Rule 112-A-E.



R. R. Sims "B" #1 Dual Completion
 Location: UL 0, Sect. 4, Tws. 23S, Rng. 37E
 Elevation: 3314'



DJC

NOT TO SCALE

DISTRICT I
P.O. Box 1980, Hobbs, NM 88241-1980
DISTRICT II
P.O. Box Drawer DD, Artesia, NM 88211-0719
DISTRICT III
1000 Rio Brazos Rd., Aztec, NM 87410
DISTRICT IV
P.O. Box 2088, Santa Fe, NM 87504-2088

State of New Mexico
Energy, Minerals and Natural Resources Department

OIL CONSERVATION DIVISION

P.O. Box 2088
Santa Fe, New Mexico 87504-2088

Form C-102
Revised February 10, 1994
Instructions on back
Submit to Appropriate District Office
State Lease - 4 Copies
Fee Lease - 3 Copies
☐ AMENDED REPORT

WELL LOCATION AND ACREAGE DEDICATION PLAT

¹ API Number 30-025-32902	² Pool Code 96315	³ Pool Name North Teague-Tubb Associated
⁴ Property Code 16867	⁵ Property Name R. R. SIMS 'B'	⁶ Well No. 1
⁷ OGRID Number 022351	⁸ Operator Name TEXACO EXPLORATION & PRODUCTION INC.	⁹ Elevation 3314'

¹⁰ Surface Location

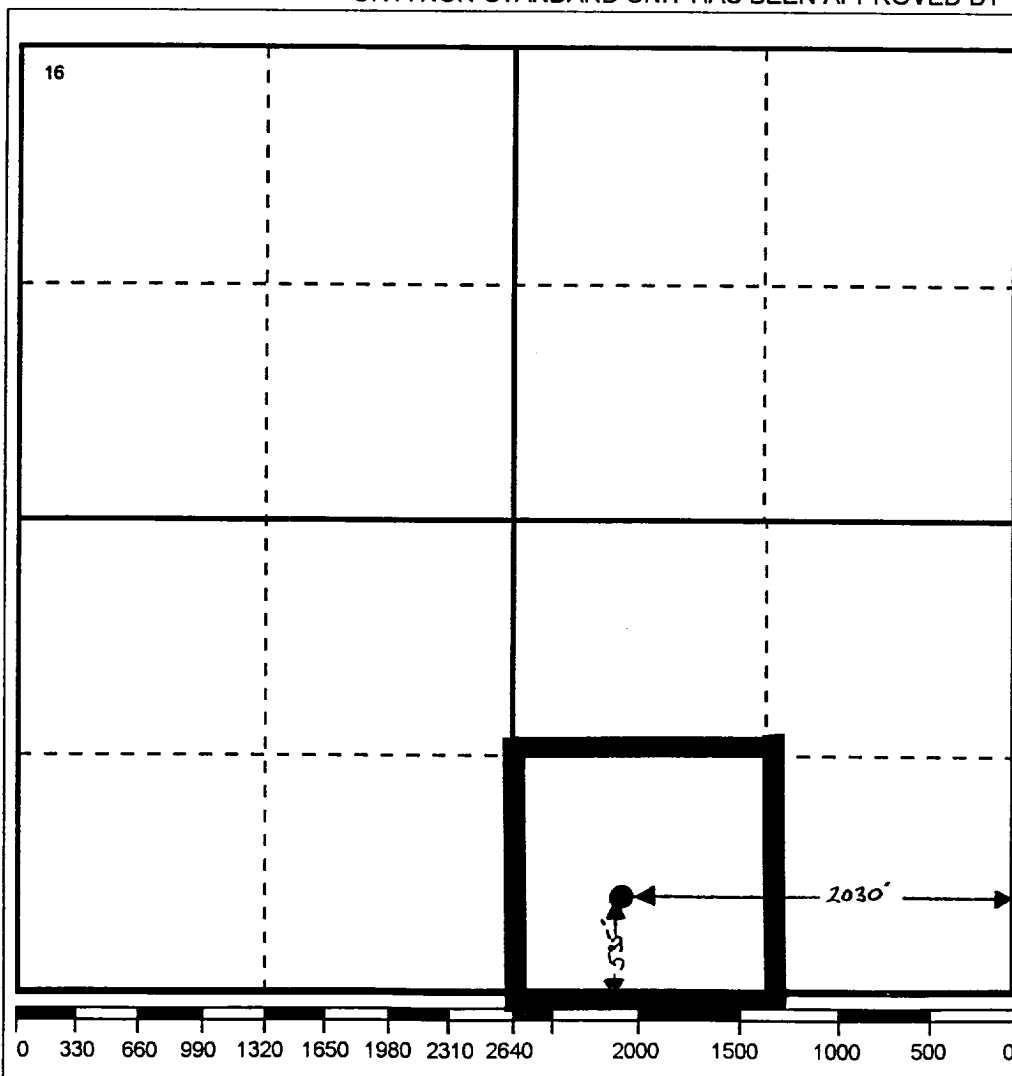
Ul or lot no. O	Section 4	Township 23-S	Range 37-E	Lot.Idn	Feet From The 535	North/South Line SOUTH	Feet From The 2030	East/West Line EAST	County LEA
--------------------	--------------	------------------	---------------	---------	----------------------	---------------------------	-----------------------	------------------------	---------------

¹¹ Bottom Hole Location If Different From Surface

Ul or lot no.	Section	Township	Range	Lot.Idn	Feet From The	North/South Line	Feet From The	East/West Line	County
---------------	---------	----------	-------	---------	---------------	------------------	---------------	----------------	--------

¹² Dedicated Acres 40	¹³ Joint or Infill No	¹⁴ Consolidation Code	¹⁵ Order No.
-------------------------------------	-------------------------------------	----------------------------------	-------------------------

NO ALLOWABLE WILL BE ASSIGNED TO THIS COMPLETION UNTIL ALL INTERESTS HAVE BEEN CONSOLIDATED
OR A NON-STANDARD UNIT HAS BEEN APPROVED BY THE DIVISION



17 OPERATOR CERTIFICATION

I hereby certify that the information
contained herein is true and complete to the
best of my knowledge and belief

Signature

Printed Name

Darrell J. Carriger

Position

Engineering Assistant

Date

9/14/95

18 SURVEYOR CERTIFICATION

I hereby certify that the well location shown
on this plat was plotted from field notes of
actual surveys made by me or under my
supervision, and that the same is true and
correct to the best of my knowledge and
belief.

Date Surveyed

Signature & Seal of
Professional Surveyor

Certificate No.

DISTRICT I

P.O. Box 1980, Hobbs, NM 88241-1980

DISTRICT II

P.O. Box Drawer DD, Artesia, NM 88211-0719

DISTRICT III

1000 Rio Brazos Rd., Aztec, NM 87410

DISTRICT IV

P.O. Box 2088, Santa Fe, NM 87504-2088

State of New Mexico

Energy, Minerals and Natural Resources Department

Form C-102

Revised February 10, 1994

Instructions on back

Submit to Appropriate District Office

State Lease - 4 Copies

Fee Lease - 3 Copies

☐ AMENDED REPORT

OIL CONSERVATION DIVISION

P.O. Box 2088

Santa Fe, New Mexico 87504-2088

WELL LOCATION AND ACREAGE DEDICATION PLAT

¹ API Number 30-025-32902	² Pool Code 96314	³ Pool Name N. TEAGUE LOWER PADDOCK- BLINEBRY ASSO.
⁴ Property Code 16867	⁵ Property Name R. R. SIMS 'B'	⁶ Well No. 1
⁷ OGRID Number 022351	⁸ Operator Name TEXACO EXPLORATION & PRODUCTION INC.	⁹ Elevation 3314'

¹⁰ Surface Location

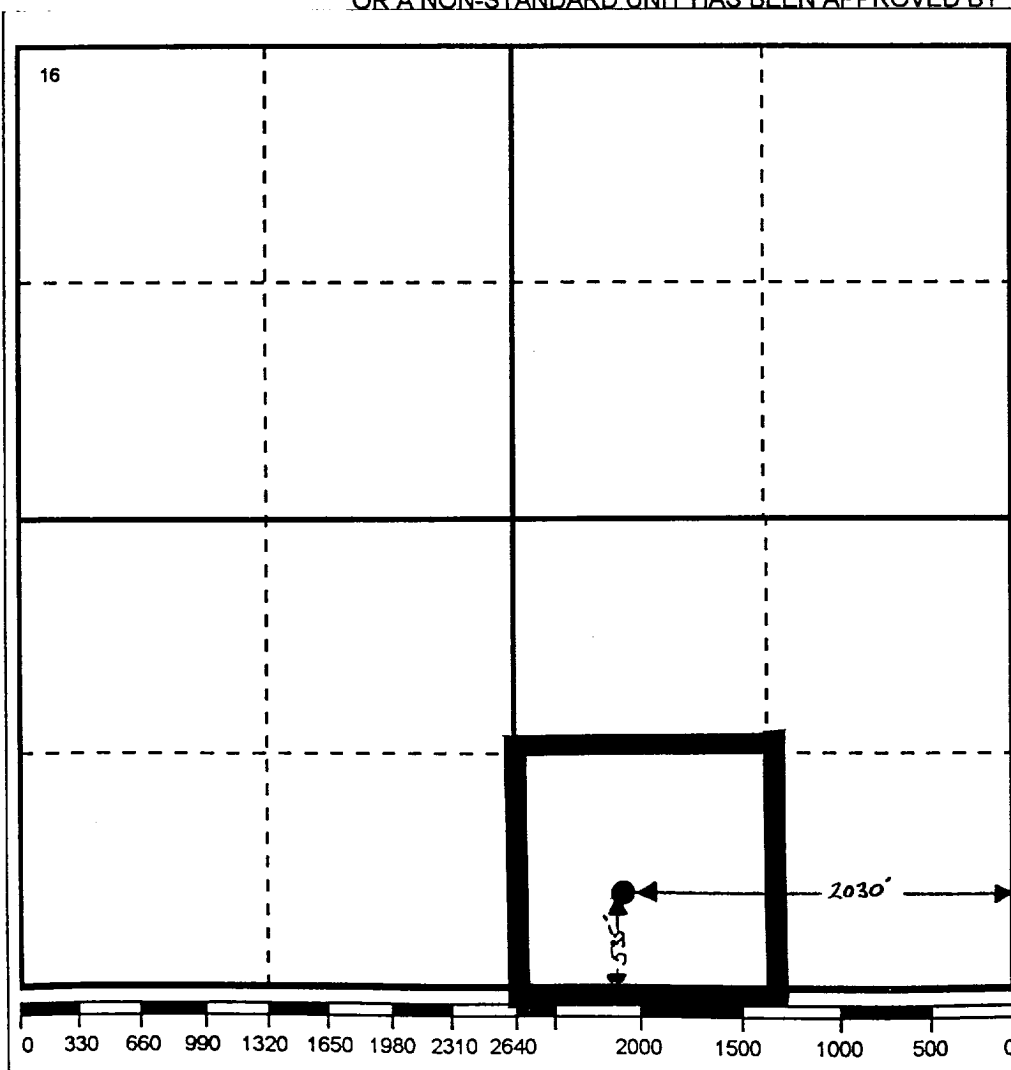
UI or lot no.	Section	Township	Range	Lot.Idn	Feet From The	North/South Line	Feet From The	East/West Line	County
O	4	23-S	37-E		535	SOUTH	2030	EAST	LEA

¹¹ Bottom Hole Location If Different From Surface

UI or lot no.	Section	Township	Range	Lot.Idn	Feet From The	North/South Line	Feet From The	East/West Line	County

¹² Dedicated Acres 40	¹³ Joint or Infill No	¹⁴ Consolidation Code	¹⁵ Order No.
-------------------------------------	-------------------------------------	----------------------------------	-------------------------

NO ALLOWABLE WILL BE ASSIGNED TO THIS COMPLETION UNTIL ALL INTERESTS HAVE BEEN CONSOLIDATED
OR A NON-STANDARD UNIT HAS BEEN APPROVED BY THE DIVISION

¹⁷ OPERATOR CERTIFICATION

I hereby certify that the information contained herein is true and complete to the best of my knowledge and belief

Signature

Printed Name

Darrell J. Carriger

Position

Engineering Assistant

Date

9/14/95

¹⁸ SURVEYOR CERTIFICATION

I hereby certify that the well location shown on this plat was plotted from field notes of actual surveys made by me or under my supervision, and that the same is true and correct to the best of my knowledge and belief.

Date Surveyed

Signature & Seal of
Professional Surveyor

Certificate No.