

DISTRICT I
P.O. Box 1980, Hobbs, NM 88241-1980

DISTRICT II
P.O. Box Drawer DD, Artesia, NM 88211-0719

DISTRICT III
1000 Rio Brazos Rd., Aztec, NM 87410

DISTRICT IV
P.O. Box 2088, Santa Fe, NM 87504-2088

State of New Mexico
Energy, Minerals and Natural Resources Department

Form C-107

Revised February 10, 1999

Instructions on back

Submit to Appropriate District Office

State Lease - 6 Copies

Fee Lease - 5 Copies

AMENDED REPORT

OIL CONSERVATION DIVISION

P.O. Box 2088
Santa Fe, New Mexico 87504-2088

APPLICATION FOR PERMIT TO DRILL, RE-ENTER, DEEPEN, PLUGBACK, OR ADD A ZONE

¹ Operator Name and Address TEXACO EXPLORATION & PRODUCTION INC. 205 E. Bender, HOBBS, NM 88240		² OGRID Number 022351
⁴ Property Code 11060		³ API Number 30 025 32944
⁵ Property Name SIMS, R. R. 'A'		⁶ Well No. 6

⁷ Surface Location									
UI or lot no	Section	Township	Range	Lot.Idn	Feet From The	North/South Line	Feet From The	East/West Line	County
M	4	23-S	37-E		500	SOUTH	375	WEST	LEA

⁸ Proposed Bottom Hole Location If Different From Surface									
UI or lot no	Section	Township	Range	Lot.Idn	Feet From The	North/South Line	Feet From The	East/West Line	County
⁹ Proposed Pool 1 TEAGUE SAN ANDRES, NORTH					¹⁰ Proposed Pool 2				

¹¹ Work Type Code P	¹² Well Type Code O	¹³ Rotary or C.T. ROTARY	¹⁴ Lease Type Code P	¹⁵ Ground Level Elevation 3324' GL, 3339' KB
¹⁶ Multiple No	¹⁷ Proposed Depth 5475'	¹⁸ Formation SAN ANDRES	¹⁹ Contractor	²⁰ Spud Date 3/1/01

²¹ Proposed Casing and Cement Program					
SIZE OF HOLE	SIZE OF CASING	WEIGHT PER FOOT	SETTING DEPTH	SACKS OF CEMENT	EST. TOP
11	8 5/8	24#	1192'	550 SACKS	SURFACE
7 7/8	5 1/2	15.5 & 17#	5429'	1500 SACKS	SURFACE

²² Describe the proposed program. If this application is to DEEPEN or PLUG BACK give the data on the present productive zone and proposed new productive zone. Describe the blowout prevention program, if any. Use additional sheets if necessary.

THE SUBJECT WELL HAS BEEN TA'D IN THE GLORIETA FORMATION. THE REMAINING PAY ZONE IS IN THE SAN ANDRES. TEXACO INTENDS TO PERF & ACID STIMULATE FROM 3994-4006. THE INTENDED PROCEDURE IS AS FOLLOWS:

- 1) MIRU PU. INSTL BOP. TIH W/PERF GUN & PERF 3994-4006'.
- 2) TIH W/WVS & PKR. SET PKR @ 3945'.
- 3) ACIDIZE SAN ANDRES W/3000 GALS 15% HCL.
- 4) TIH W/PROD TBG & SET SN @ 4050'.
- 5) TIH W/RDS & PMP. PLACE ON PRODUCTION.

Permit Expires 1 Year From Approval
Date Unless Drilling Underway
Plugback

²³ I hereby certify that the rules and regulations of the Oil Conservation Division have been complied with and that the information given above is true and complete to the best of my knowledge and belief.

Signature

J. Denise Leake

Printed Name J. Denise Leake

Title Engineering Assistant

Date 2/16/01

Telephone 397-0405

OIL CONSERVATION DIVISION

Approved By:

ORIGINAL SIGNED BY
GARY WINK
FIELD REP. II

Title:

Approval Date: FEB 16 2001 Expiration Date:

Conditions of Approval:
Attached

DISTRICT I

P.O. Box 1980, Hobbs, NM 88241-1980

DISTRICT II

P.O. Box Drawer DD, Artesia, NM 88211-0719

DISTRICT III

1000 Rio Brazos Rd., Aztec, NM 87410

DISTRICT IV

P.O. Box 2088, Santa Fe, NM 87504-2088

State of New Mexico

Energy, Minerals and Natural Resources Department

Form C-10 2

Revised February 10, 1999

Instructions on back

Submit to Appropriate District Office

State Lease - 4 Copies

Fee Lease - 3 Copies

AMENDED REPORT

OIL CONSERVATION DIVISION

P.O. Box 2088

Santa Fe, New Mexico 87504-2088

WELL LOCATION AND ACREAGE DEDICATION PLAT

1 API Number 30 025 32944	2 Pool Code 96197	3 Pool Name TEAGUE SAN ANDRES, NORTH
4 Property Code 11060	5 Property Name SIMS, R. R. 'A'	6 Well No. 6
7 OGRID Number 022351	8 Operator Name TEXACO EXPLORATION & PRODUCTION INC.	9 Elevation 3324' GL, 3339' KB

10 Surface Location

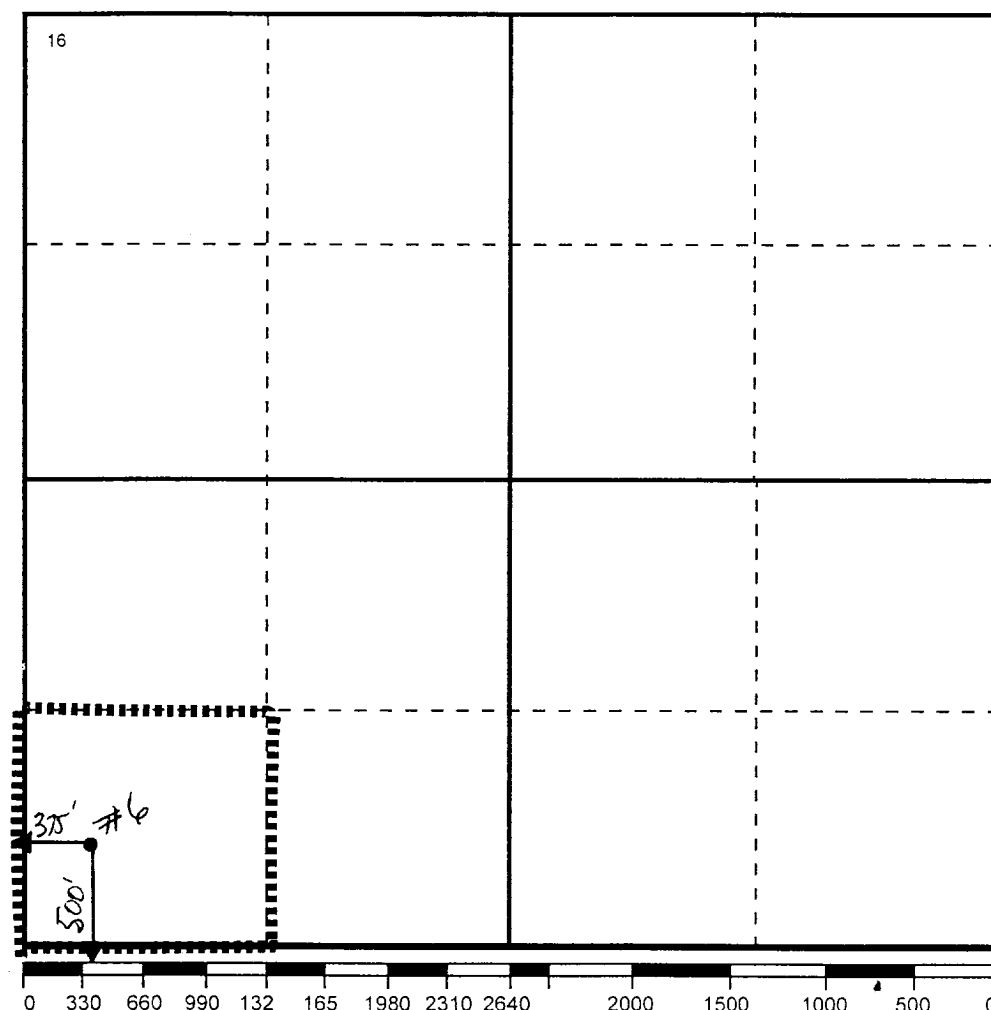
UI or lot no	Section	Township	Range	Lot.Idn	Feet From The	North/South Line	Feet From The	East/West Line	County
M	4	23-S	37-E		500	SOUTH	375	WEST	LEA

11 Bottom Hole Location If Different From Surface

UI or lot no	Section	Township	Range	Lot.Idn	Feet From The	North/South Line	Feet From The	East/West Line	County
--------------	---------	----------	-------	---------	---------------	------------------	---------------	----------------	--------

12 Dedicated Acre 40	13 Joint or Infill No	14 Consolidation Code	15 Order No.
-------------------------	--------------------------	-----------------------	--------------

NO ALLOWABLE WILL BE ASSIGNED TO THIS COMPLETION UNTIL ALL INTERESTS HAVE BEEN CONSOLIDATED
OR A NON-STANDARD UNIT HAS BEEN APPROVED BY THE DIVISION



17 OPERATOR CERTIFICATION

I hereby certify that the information contained herein is true and complete to the best of my knowledge and belief

Signature

Printed Name

J. Denise Leake

Position

Engineering Assistant

Date

2/16/01

18 SURVEYOR CERTIFICATION

I hereby certify that the well location shown on this plat was plotted from field notes of actual surveys made by me or under my supervision, and that the same is true and correct to the best of my knowledge and belief.

Date Surveyed

Signature & Seal of

Professional Surveyor

Certificate No.