

DISTRICT I  
P. O. Box 1980  
Hobbs, NM 88241-1980

DISTRICT II  
P. O. Drawer DD  
Artesia, NM 88211-0719

DISTRICT III  
1000 Rio Brazos Rd.  
Aztec, NM 87410

DISTRICT IV  
P. O. Box 2088  
Santa Fe, NM 87507-2088

State of New Mexico  
Energy, Minerals, and Natural Resources Department

Form C-102  
Revised 02-10-94

Instructions on back

Submit to the Appropriate  
District Office  
State Lease - 4 copies  
Fee Lease - 3 copies

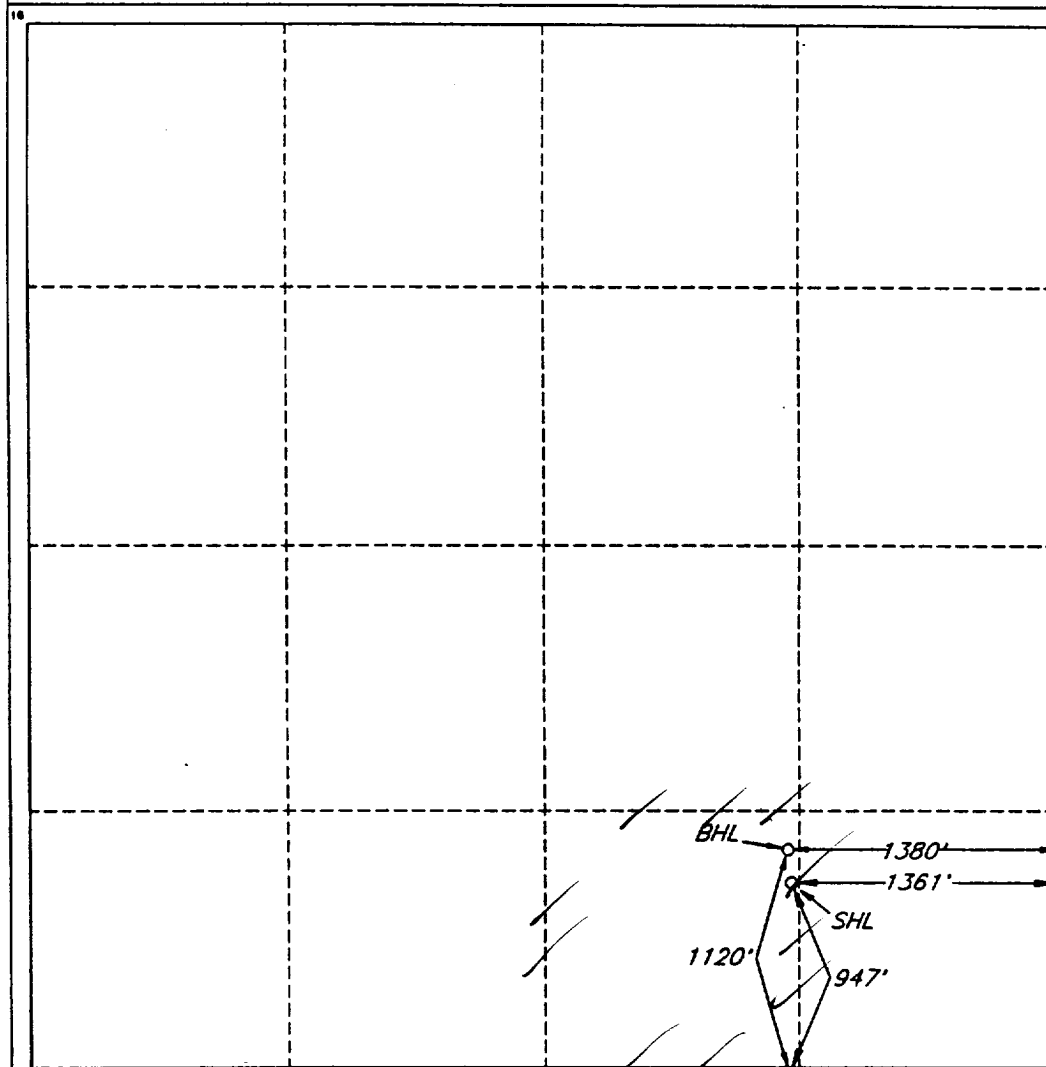
**OIL CONSERVATION DIVISION**  
P. O. Box 2088  
Santa Fe, New Mexico 87504-2088

☐ AMENDED REPORT

**WELL LOCATION AND ACREAGE DEDICATION PLAT**

1 API Number <b>30-025-32962</b>		2 Pool Code <b>58900</b>		3 Pool Name <b>Teague, Simpson</b>					
4 Property Code <b>9280</b>		5 Property Name <b>E. C. HILL 'B' FEDERAL</b>						6 Well Number <b>13</b>	
7 OGRID No. <b>017805</b>		8 Operator Name <b>PLAINS PETROLEUM OPERATING COMPANY</b>						9 Elevation <b>3257'</b>	
10 SURFACE LOCATION									
UL or lot no. <b>0</b>	Section <b>34</b>	Township <b>23 SOUTH</b>	Range <b>37 EAST, N.M.P.M.</b>	Lot Ida	Feet from the <b>947'</b>	North/South line <b>SOUTH</b>	Feet from the <b>1361'</b>	East/West line <b>EAST</b>	County <b>LEA</b>
11 BOTTOM HOLE LOCATION IF DIFFERENT FROM SURFACE									
UL or lot no. <b>0</b>	Section <b>34</b>	Township <b>23 SOUTH</b>	Range <b>37 EAST, N.M.P.M.</b>	Lot Ida	Feet from the <b>1120'</b>	North/South line <b>SOUTH</b>	Feet from the <b>1380'</b>	East/West line <b>EAST</b>	County <b>LEA</b>
12 Dedicated Acres		13 Joint or Infill		14 Consolidation Code		15 Order No.			

NO ALLOWABLE WELL BE ASSIGNED TO THIS COMPLETION UNTIL ALL INTERESTS HAVE BEEN CONSOLIDATED OR A NON-STANDARD UNIT HAS BEEN APPROVED BY THE DIVISION



**OPERATOR CERTIFICATION**

I hereby certify that the information contained herein is true and complete to the best of my knowledge and belief.

Signature  
*Dominic J. Bazile*  
Printed Name  
**Dominic J. Bazile**  
Title  
**Area Engineer**  
Date  
**March 29, 1995**

**SURVEYOR CERTIFICATION**

I hereby certify that the well location shown on this plat was plotted from field notes of actual surveys made by me or under my supervision, and that the same is true and correct to the best of my belief.

Date of Survey  
**MARCH 20, 1995**

Signature and Seal of Professional Surveyor  
*V. Lynn Bezner*  
V. LYNN BEZNER  
NO. 7920  
Certified by  
V. L. BEZNER  
S. #7920  
JCR #38577-7 45 SW / JCI

SD/LC/L  
7/27/05

RECEIVED

1995

OFFICE