

District I  
PO Box 1980, Hobbs, NM 88241-1980  
District II  
PO Drawer DD, Artesia, NM 88211-0719  
District III  
1000 Rio Brazos Rd., Aztec, NM 87410  
District IV  
PO Box 2088, Santa Fe, NM 87504-2088

State of New Mexico  
Energy, Minerals & Natural Resources Department

OIL CONSERVATION DIVISION  
PO Box 2088  
Santa Fe, NM 87504-2088

Form C-102

Revised February 21, 1994

Instructions on back

Submit to Appropriate District Office

State Lease - 4 Copies

Fee Lease - 3 Copies

☐ AMENDED REPORT

WELL LOCATION AND ACREAGE DEDICATION PLAT

|  |  |                                      |  |                                |                     |
|--|--|--------------------------------------|--|--------------------------------|---------------------|
| 1 API Number<br>30-025-32967<br>Unassigned |  | 2 Pool Code<br>83810                 |  | 3 Pool Name<br>Rhodes Gas Pool |                     |
| 4 Property Code<br>7420/14221              |  | 5 Property Name<br>RHODES 'A'        |  |                                | 6 Well Number<br>4  |
| 7 OGRID No.<br>26485                       |  | 8 Operator Name<br>MERIDIAN OIL INC. |  |                                | 9 Elevation<br>2986 |

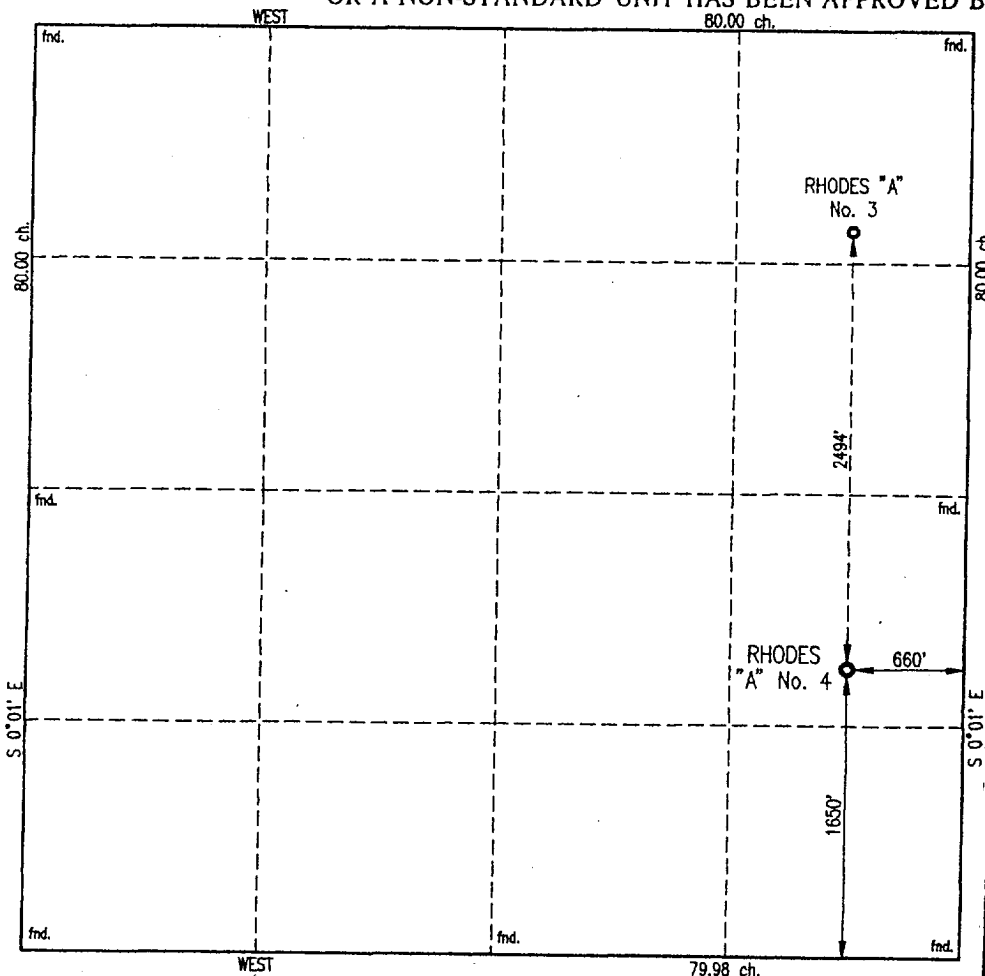
10 Surface Location

| UL or lot no. | Section | Township | Range | Lot Idn | Feet from the | North/South line   | Feet from the | East/West line | County |
|---------------|---------|----------|-------|---------|---------------|--------------------|---------------|----------------|--------|
| I             | 22      | 26 S     | 37 E  |         | 1650          | South<br>NORTH 679 | 660           | EAST           | LEA    |

11 Bottom Hole Location If Different From Surface


| UL or lot no.             | Section | Township           | Range | Lot Idn               | Feet from the | North/South line | Feet from the | East/West line | County |
|---------------------------|---------|--------------------|-------|-----------------------|---------------|------------------|---------------|----------------|--------|
| Same as surface           |         |                    |       |                       |               |                  |               |                |        |
| 12 Dedicated Acres<br>160 |         | 13 Joint or Infill |       | 14 Consolidation Code |               | 15 Order No.     |               |                |        |

NO ALLOWABLE WILL BE ASSIGNED TO THIS COMPLETION UNTIL ALL INTERESTS HAVE BEEN CONSOLIDATED  
OR A NON-STANDARD UNIT HAS BEEN APPROVED BY THE DIVISION



17 OPERATOR CERTIFICATION

I hereby certify that the information contained herein is true and complete to the best of my knowledge and belief

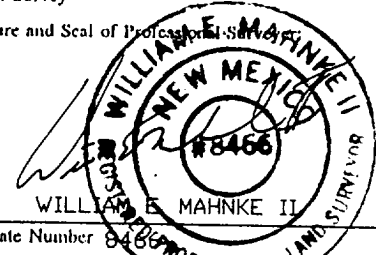
  
Signature  
Donna Willimas  
Printed Name  
Regulatory Assistant  
Title  
4/11/95  
Date

18 SURVEYOR CERTIFICATION

I hereby certify that the well location shown on this plat was plotted from field notes of actual surveys made by me or under my supervision, and that the same is true and correct to the best of my belief.

MARCH 23, 1995

Date of Survey  
Signature and Seal of Professional Surveyor

  
WILLIAM E. MAHNKE II  
Certificate Number 8466