

District I
PO Box 1980, Hobbs, NM 88240-1980
District II
PO Drawer DD, Artesia, NM 88211-0719
District III
1000 Rio Brazos Rd., Aztec, NM 87410
District IV
PO Box 2088, Santa Fe, NM 87504-2088

State of New Mexico
Energy, Minerals & Natural Resources Department

OIL CONSERVATION DIVISION
PO Box 2088
Santa Fe, NM 87504-2088

Form C-102
Revised February 10, 1994
Instructions on back
Submit to Appropriate District Office
State Lease - 4 Copies
Fee Lease - 3 Copies

☐ AMENDED REPORT

WELL LOCATION AND ACREAGE DEDICATION PLAT

1 API Number 30-025-33041		2 Pool Code 33820		3 Pool Name JALMAT TANSILL YATES SEVEN RIVERS	
4 Property Code 17295		5 Property Name meyers MYERS B FEDERAL		6 Well Number 1	
7 OGRID No. 020451		8 Operator Name SDX RESOURCES, INC.		9 Elevation 3340.	

10 Surface Location

UL or lot no.	Section	Township	Range	Lot Idn	Feet from the	North/South line	Feet from the	East/West line	County
I	22	24S	36E		2310	SOUTH	1250	EAST	LEA

11 Bottom Hole Location If Different From Surface

UL or lot no.	Section	Township	Range	Lot Idn	Feet from the	North/South line	Feet from the	East/West line	County

12 Dedicated Acres	13 Joint or Infill	14 Consolidation Code	15 Order No.

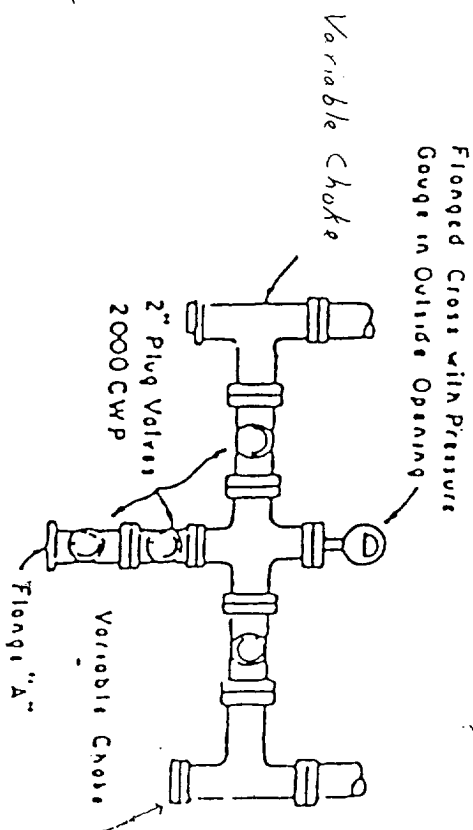
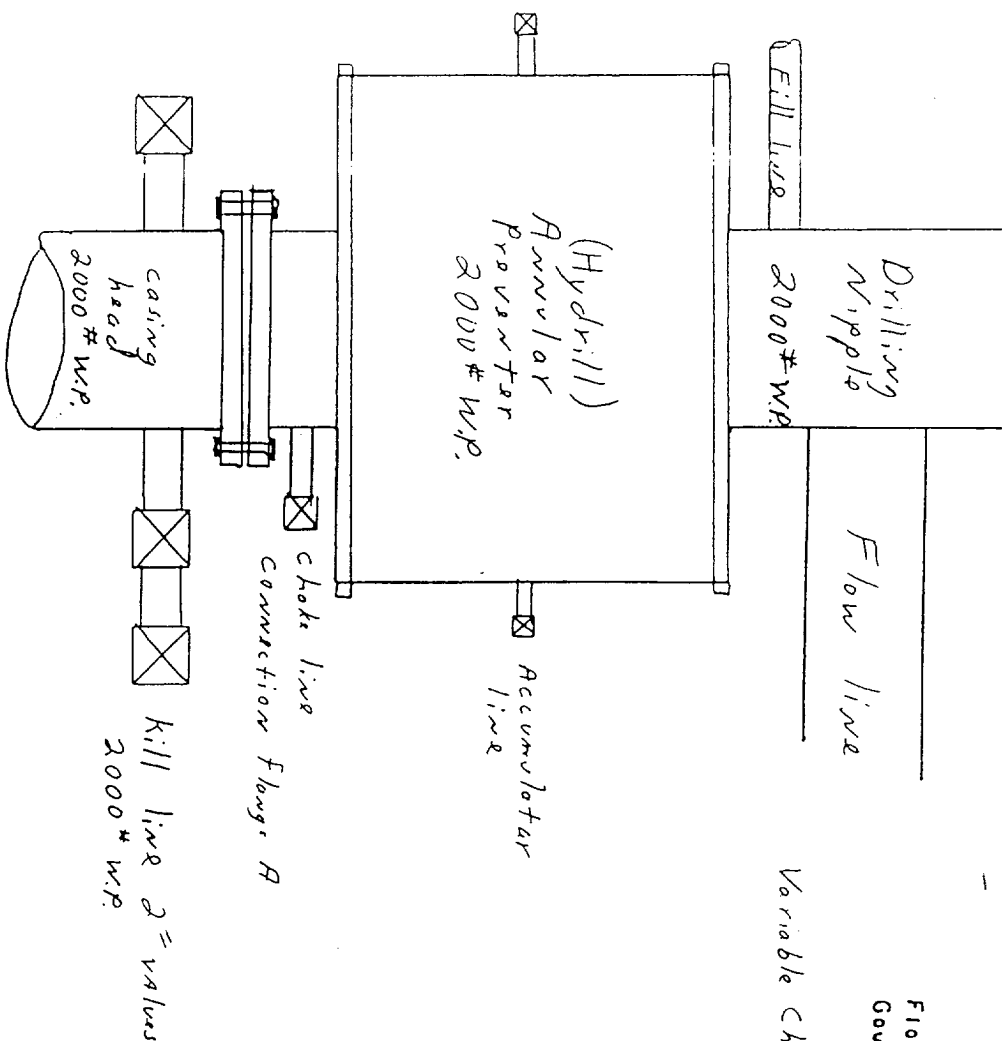
NO ALLOWABLE WILL BE ASSIGNED TO THIS COMPLETION UNTIL ALL INTERESTS HAVE BEEN CONSOLIDATED OR A NON-STANDARD UNIT HAS BEEN APPROVED BY THE DIVISION

16					<p>17 OPERATOR CERTIFICATION</p> <p>I hereby certify that the information contained herein is true and complete to the best of my knowledge and belief.</p> <p><i>[Signature]</i> Signature John Pool Printed Name Vice President Title May 26, 1995 Date</p>
				<p>18 SURVEYOR CERTIFICATION</p> <p>I hereby certify that the well location shown on this plat was plotted from field notes of actual surveys made by me or under my supervision, and that the same is true and correct to the best of my belief.</p> <p>MAY 19, 1995 Date of Survey R. REDDY Signature and Seal of Professional Surveyor. NEW MEXICO REGISTERED LAND SURVEYOR 5412 CERTIFICATE NO. 5412</p>	

SDX RESOURCES, INC.
Meyers B Federal #1
Exhibit #2

RECEIVED

100 05 1995
U.S. CUSTOMS
OFFICE



PLAN VIEW-CHOKE MANIFOLD

SDX RESOURCES, INC.
Meyers B Federal #1
Exhibit #1

RECEIVED
1985
JULY 10
10:00 AM

10/10/85
10:00 AM