

UNITED STATES
DEPARTMENT OF THE INTERIOR
BUREAU OF LAND MANAGEMENT

1592
APPLICATION FOR PERMIT TO DRILL OR DEEPEN

1a. TYPE OF WORK

DRILL

☒

DEEPEN

☐

b. TYPE OF WELL

OIL
WELL

☒

GAS
WELL

☐

OTHER

SINGLE
ZONE

☒

MULTIPLE
ZONE

☐

2. NAME OF OPERATOR

ARCH PETROLEUM, INC.

3. ADDRESS AND TELEPHONE NO.

10 Desta Drive, Suite 420E, Midland, TX 79705 (915) 685-1961

4. LOCATION OF WELL (Report location clearly and in accordance with any State requirements.)

At surface Unit E, 2620' FNL and 330' FWL

At proposed prod. zone

14. DISTANCE IN MILES AND DIRECTION FROM NEAREST TOWN OR POST OFFICE*

10 MILES SOUTH OF EUNICE, NM

15. DISTANCE FROM PROPOSED*

LOCATION TO NEAREST
PROPERTY OR LEASE LINE, FT.

331'

(Also to nearest drlg. unit line, if any)

18. DISTANCE FROM PROPOSED LOCATION*

TO NEAREST WELL, DRILLING, COMPLETED,
OR APPLIED FOR, ON THIS LEASE, FT.

497'

16. NO. OF ACRES IN LEASE

1520

17. NO. OF ACRES ASSIGNED

TO THIS WELL

40

21. ELEVATIONS (Show whether DF, RT, GR, ect.)

3295' GR

22. APPROX. DATE WORK WILL START*

ASAP

PROPOSED CASING AND CEMENTING PROGRAM

SIZE OF HOLE	GRADE, SIZE OF CASING	WEIGHT PER FOOT	SETTING DEPTH	QUANTITY OF CEMENT
12-1/4"	K-55, 8-5/8"	24#	1075'	600 sx. Cl. 'C' circ.
7-7/8"	J-55, 5-1/2"	15.5#	6000'	1650 sx. Cl. 'C' circ. (TIE BACK)

Mud Program:

0' -- 1075' FW/Spud Mud 8.8--9.0 #/gal., 32 visc., 10 pH

1075' -- 5000' BW 10 #/gal., 28 visc., 10 pH

5000' -- 6000' BW/Starch 10 #/gal., 30 visc., 10 pH

See attached BOP drawing for 3000 psi system

OPER. CORR'D NO. **962**

PROPERTY NO. **14898**

POOL CODE **58300**

EFF. DATE **1/19/96**

API NO. **30-125-33253**

R-10453 **NSL**
IN ABOVE SPACE DESCRIBE PROPOSED PROGRAM: If proposal is to deepen, give data on present productive zone and proposed new production zone. If proposal is to drill or deepen directionally, give pertinent data on subsurface locations and measured and true vertical depths. Give blowout preventer program, if any.

24

SIGNED **Baheri Brooks**

TITLE

PRODUCTION ANALYST

DATE

11/30/95

(This space for Federal or State office use)

PERMIT NO. _____

APPROVAL DATE _____

Application approval does not warrant or certify that the applicant holds legal or equitable title to those rights in the subject lease which would entitle the applicant to conduct operations thereon.
CONDITIONS OF APPROVAL, IF ANY:

APPROVED BY _____

TITLE _____

DATE _____

*See Instructions On Reverse Side

Title 18 U.S.C. Section 1001, makes it a crime for any person knowingly and willfully to make to any department or agency of the United States any false, fictitious or fraudulent statements or representations as to any matter within its jurisdiction.

APPROVAL SUBJECT TO
GENERAL REQUIREMENTS AND
SPECIAL STIPULATIONS
ATTACHED

DISTRICT I
P.O. Box 1088, Hobbs, NM 88241-1088

State of New Mexico
Energy, Minerals and Natural Resources Department

Form C-102
Revised February 10, 1994
Submit to Appropriate District Office
State Lease - 4 Copies
Fee Lease - 3 Copies

DISTRICT II
P.O. Drawer 88, Artesia, NM 86211-0718

OIL CONSERVATION DIVISION

DISTRICT III
1000 Elie Brazos Rd., Artesia, NM 87410

P.O. Box 2088
Santa Fe, New Mexico 87504-2088

☐ AMENDED REPORT

DISTRICT IV
P.O. Box 2088, Santa Fe, NM 87504-2088

WELL LOCATION AND ACREAGE DEDICATION PLAT

API Number 30-025-33253	Pool Code 58300	Pool Name Teague Blinebry
Property Code 14398	Property Name C. E. LAMUNYON	Well Number 55
OGED No. 962	Operator Name ARCH PETROLEUM INC.	Elevation 3295

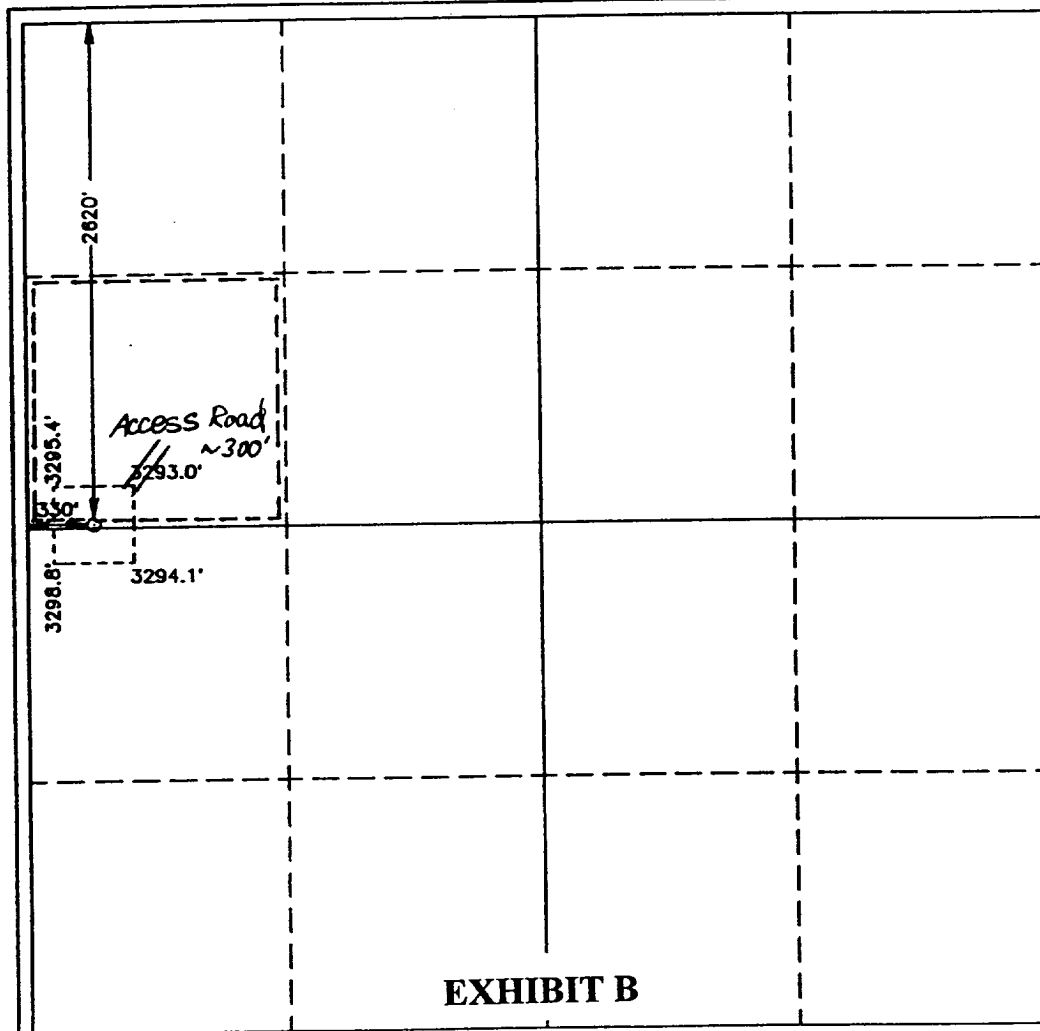
Surface Location

UL or lot No. E	Section 22	Township 23 S	Range 37 E	Lot Idn	Feet from the 2620	North/South line NORTH	Feet from the 330	East/West line WEST	County LEA
---------------------------	----------------------	-------------------------	----------------------	---------	------------------------------	----------------------------------	-----------------------------	-------------------------------	----------------------

Bottom Hole Location If Different From Surface

UL or lot No.	Section	Township	Range	Lot Idn	Feet from the	North/South line	Feet from the	East/West line	County
Dedicated Acres 40	Joint or Infill	Consolidation Code	Order No.						

NO ALLOWABLE WILL BE ASSIGNED TO THIS COMPLETION UNTIL ALL INTERESTS HAVE BEEN CONSOLIDATED
OR A NON-STANDARD UNIT HAS BEEN APPROVED BY THE DIVISION



OPERATOR CERTIFICATION

I hereby certify the the information
contained herein is true and complete to the
best of my knowledge and belief.

Bobbie Brooks
Signature

Bobbie Brooks
Printed Name
Production Analyst
Title

8/15/95
Date

SURVEYOR CERTIFICATION

I hereby certify that the well location shown
on this plat was plotted from field notes of
actual surveys made by me or under my
supervision, and that the same is true and
correct to the best of my belief.

AUGUST 5, 1995

Date Surveyed
Signature
Professional Surveyor
NEW MEXICO
8-8-95
W.O. Num. **95-1207**
Certificate No. **676**
J. EIDSON
12641