

District I
PO Box 1980, Hobbs, NM 88241-1980
District II
PO Drawer DD, Artesia, NM 88211-0719
District III
1000 Rio Brazos Rd., Aztec, NM 87410
District IV
PO Box 2088, Santa Fe, NM 87504-2088

State of New Mexico
Energy, Minerals & Natural Resources Department

OIL CONSERVATION DIVISION
PO Box 2088
Santa Fe, NM 87504-2088

Form C-101
Revised February 10, 1994
Instructions on back
Submit to Appropriate District Office
State Lease - 6 Copies
Fee Lease - 5 Copies

☐ AMENDED REPORT

APPLICATION FOR PERMIT TO DRILL, RE-ENTER, DEEPEN, PLUGBACK, OR ADD A ZONE

¹ Operator Name and Address. Parker & Parsley Development L.P. P. O. Box 3178 Midland, TX 79702		¹ OGRID Number 36324
¹ Property Code 19648	¹ Property Name Tres Equis State	¹ API Number 30-025-3633
		¹ Well No. 1

⁷ Surface Location

UL or lot no.	Section	Township	Range	Lot Ida	Feet from the	North/South line	Feet from the	East/West line	County
J	6	24 S	33 E		1980	South	1980	East	Lea

⁸ Proposed Bottom Hole Location If Different From Surface

UL or lot no.	Section	Township	Range	Lot Ida	Feet from the	North/South line	Feet from the	East/West line	County
⁹ Proposed Pool 1 Wildcat (Bone Spring)					¹⁰ Proposed Pool 2 Triple X (Delaware)				

¹¹ Work Type Code N	¹² Well Type Code O	¹³ Cable/Rotary R	¹⁴ Lease Type Code S	¹⁵ Ground Level Elevation 3633'
¹⁶ Multiple No	¹⁷ Proposed Depth 12,500'	¹⁸ Formation Bone Spring	¹⁹ Contractor Hondo	²⁰ Spud Date 10/21/96

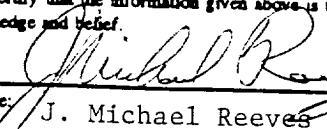
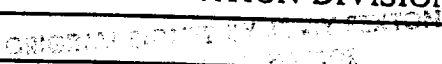
²¹ Proposed Casing and Cement Program

Hole Size	Casing Size	Casing weight/foot	Setting Depth	Sacks of Cement	Estimated TOC
14 3/4"	11 3/4	42#	500'	325 sx	surface
11"	8 5/8	32#	4900'	400 sx	2595'
7 7/8"	5 1/2	20#	12,500'	1450 sx	surface

²² Describe the proposed program. If this application is to DEEPEN or PLUG BACK give the data on the present productive zone and proposed new productive zone. Describe the blowout prevention program, if any. Use additional sheets if necessary.

BOP's: 500' to 12,500', 10"- 3000 psi double ram hydraulic preventors and
a 3000 psi annular BOP.

Permit Expires 1 Year From Approval
Date Unless Drilling Underway

²³ I hereby certify that the information given above is true and complete to the best of my knowledge and belief. Signature: 		OIL CONSERVATION DIVISION	
Printed name: J. Michael Reeves		Approved by: 	
Title: Sr. Operations Engineer		Title:	
Date: 10/14/96	Phone: 915/571/1240	Approval Date: OCT 14 1996	Expiration Date:
		Conditions of Approval: Attached <input type="checkbox"/>	

DISTRICT II
P.O. Drawer DD, Artesia, NM 88211-0719

DISTRICT III
1000 Rio Brazos Rd., Aztec, NM 87410

DISTRICT IV
P.O. BOX 2088, SANTA FE, N.M. 87504-2088

OIL CONSERVATION DIVISION

P.O. Box 2088
Santa Fe, New Mexico 87504-2088

☐ AMENDED REPORT

WELL LOCATION AND ACREAGE DEDICATION PLAT

API Number 30.015-33653	Pool Code ✓	Pool Name W. Heat Bone Spring
Property Code 19648	Property Name TRES EQUIS STATE	Well Number 1
OGRID No. 36524	Operator Name PARKER & PARSELEY	Elevation 3633

Surface Location

UL or lot No.	Section	Township	Range	Lot Idn	Feet from the	North/South line	Feet from the	East/West line	County
J	6	24 S	33 E		1980	SOUTH	1980	EAST	LEA

Bottom Hole Location If Different From Surface

UL or lot No.	Section	Township	Range	Lot Idn	Feet from the	North/South line	Feet from the	East/West line	County
Dedicated Acres	Joint or Infill	Consolidation Code		Order No.					

NO ALLOWABLE WILL BE ASSIGNED TO THIS COMPLETION UNTIL ALL INTERESTS HAVE BEEN CONSOLIDATED
OR A NON-STANDARD UNIT HAS BEEN APPROVED BY THE DIVISION

LOT 4 38.21 ACRES	LOT 3 39.94 ACRES	LOT 2 39.90 ACRES	LOT 1 39.86 ACRES
LOT 5 39.25 ACRES			
LOT 6 38.27 ACRES			
LOT 7 39.29 ACRES			

OPERATOR CERTIFICATION

I hereby certify the the information contained herein is true and complete to the best of my knowledge and belief.

Jeanie Dodd
Signature

Jeanie Dodd
Printed Name

Proration Analyst
Title

10/14/96
Date

SURVEYOR CERTIFICATION

I hereby certify that the well location shown on this plat was plotted from field notes of actual surveys made by me or under my supervision, and that the same is true and correct to the best of my belief.

JULY 2, 1996
Date Surveyed

CDG
Signature & Seal of Professional Surveyor

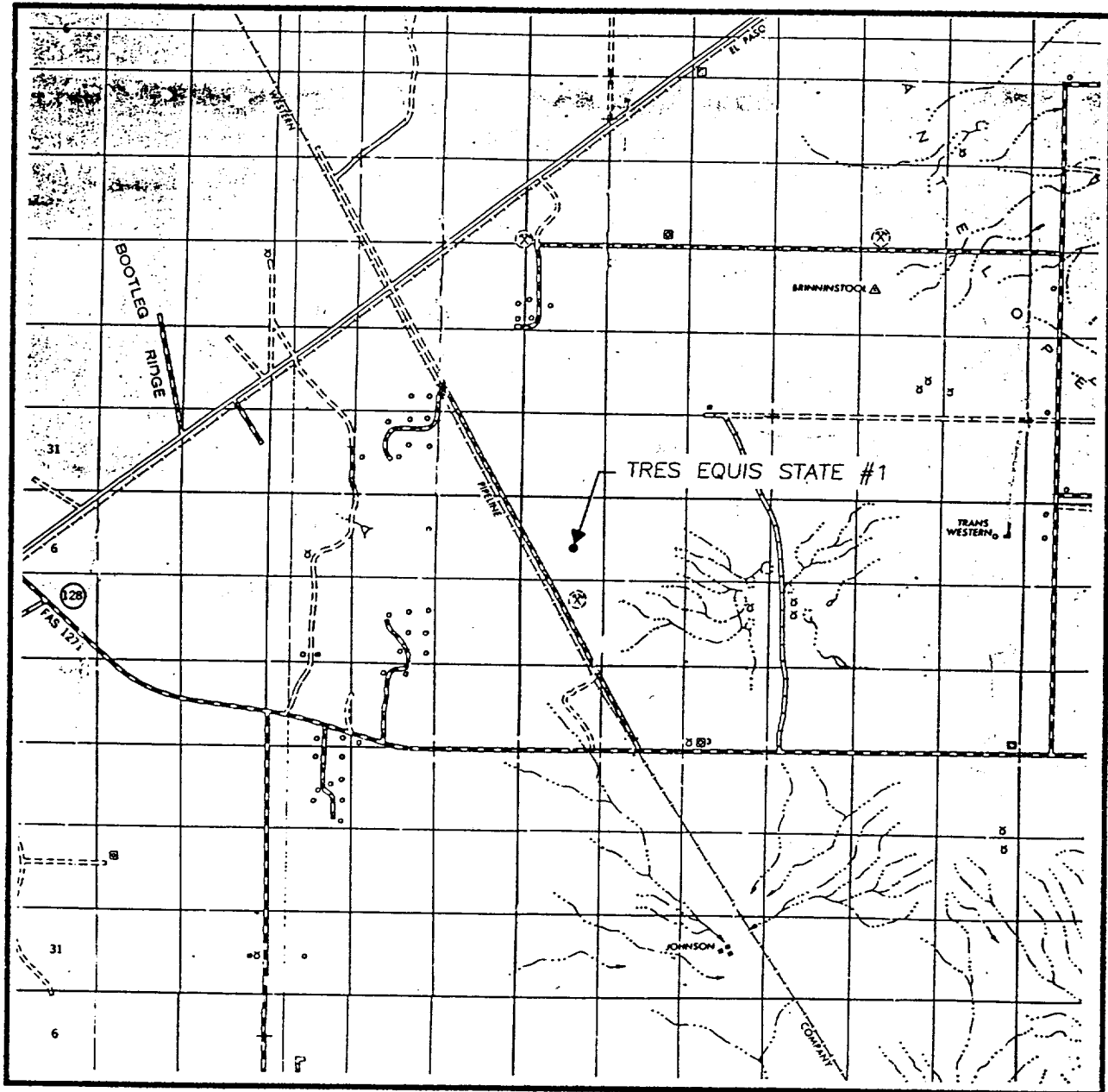
7-11-96
Date

86-11-0768
Certificate No.

JOHN W. WEST
RONALD J. EIDSON
GARY EIDSON

676
3239
12641

VICINITY MAP



SCALE: 1" = 2 MILES

SEC. 6 TWP. 24-S RGE. 33-E

SURVEY N.M.P.M.

COUNTY LEA

DESCRIPTION 1980' FSL & 1980' FEL

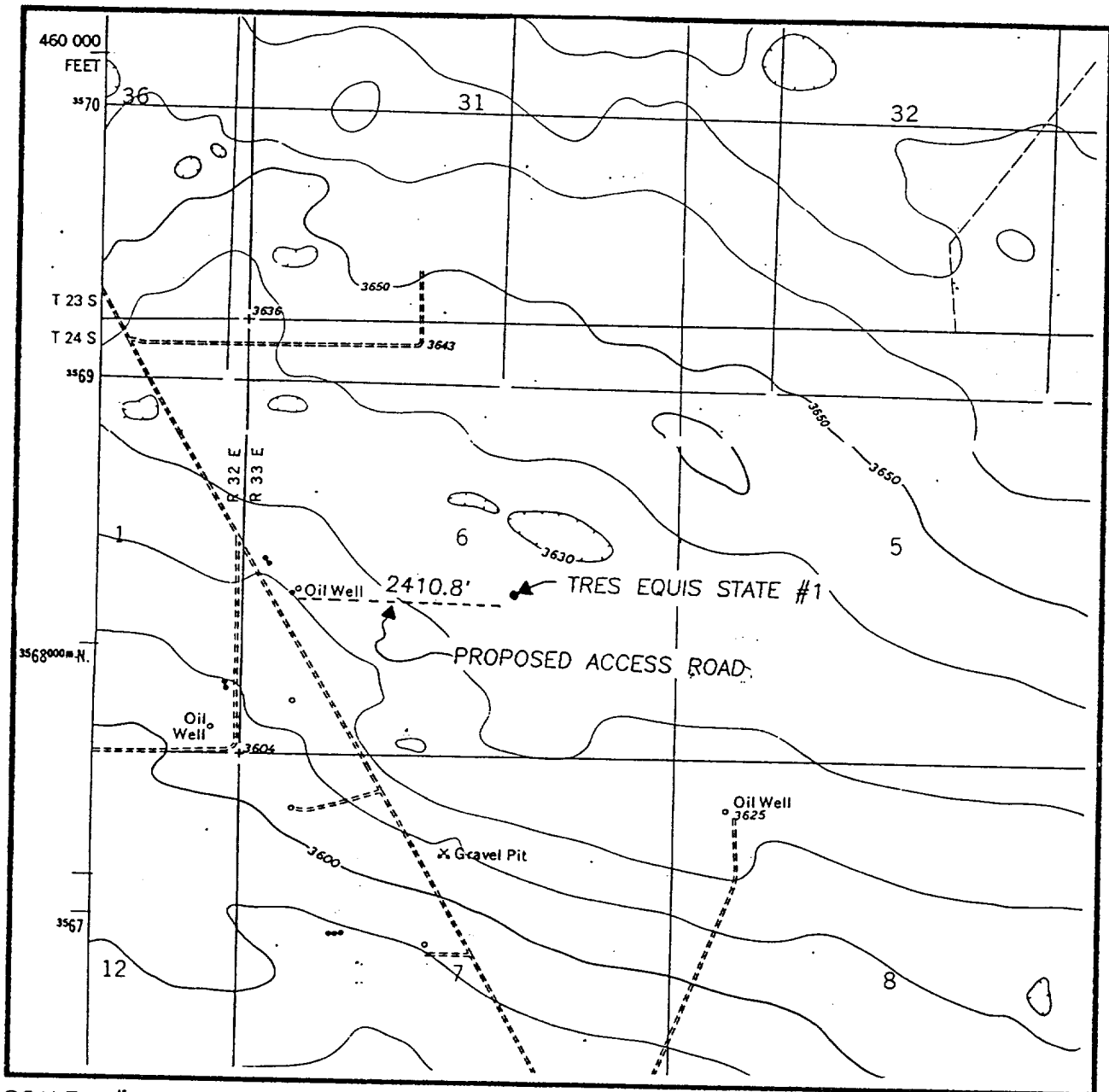
ELEVATION 3633

OPERATOR PARKER & PARSLEY

LEASE TRES EQUIS STATE

JOHN WEST ENGINEERING
HOBBS, NEW MEXICO
(505) 393-3117

LOCATION VERIFICATION MAP



SCALE: 1" = 2000'

CONTOUR INTERVAL:
BELL LAKE - 10'
TIP TOP WELLS - 10'

SEC. 6 TWP. 24-S RGE. 33-E

SURVEY N.M.P.M.

COUNTY LEA

DESCRIPTION 1980' FSL & 1980' FEL

ELEVATION 3633

OPERATOR PARKER & PARSLEY

LEASE TRES EQUIS STATE

U.S.G.S. TOPOGRAPHIC MAP

BELL LAKE, TIP TOP WELLS, N.M.

JOHN WEST ENGINEERING
HOBBS, NEW MEXICO
(505) 393-3117

[Faint handwritten notes at the bottom of the page]

Received
Hobbs
JCD