

DISTRICT I  
P. O. Box 1980  
Hobbs, NM 88241-1980

State of New Mexico  
Energy, Minerals, and Natural Resources Department

Form C-102  
Revised 02-10-94

Instructions on back

DISTRICT II  
P. O. Drawer DD  
Artesia, NM 88211-0719

OIL CONSERVATION DIVISION  
P. O. Box 2088  
Santa Fe, New Mexico 87504-2088

Submit to the Appropriate  
District Office  
State Lease - 4 copies  
Fee Lease - 3 copies

DISTRICT III  
1000 Rio Brazos Rd.  
Aztec, NM 87410

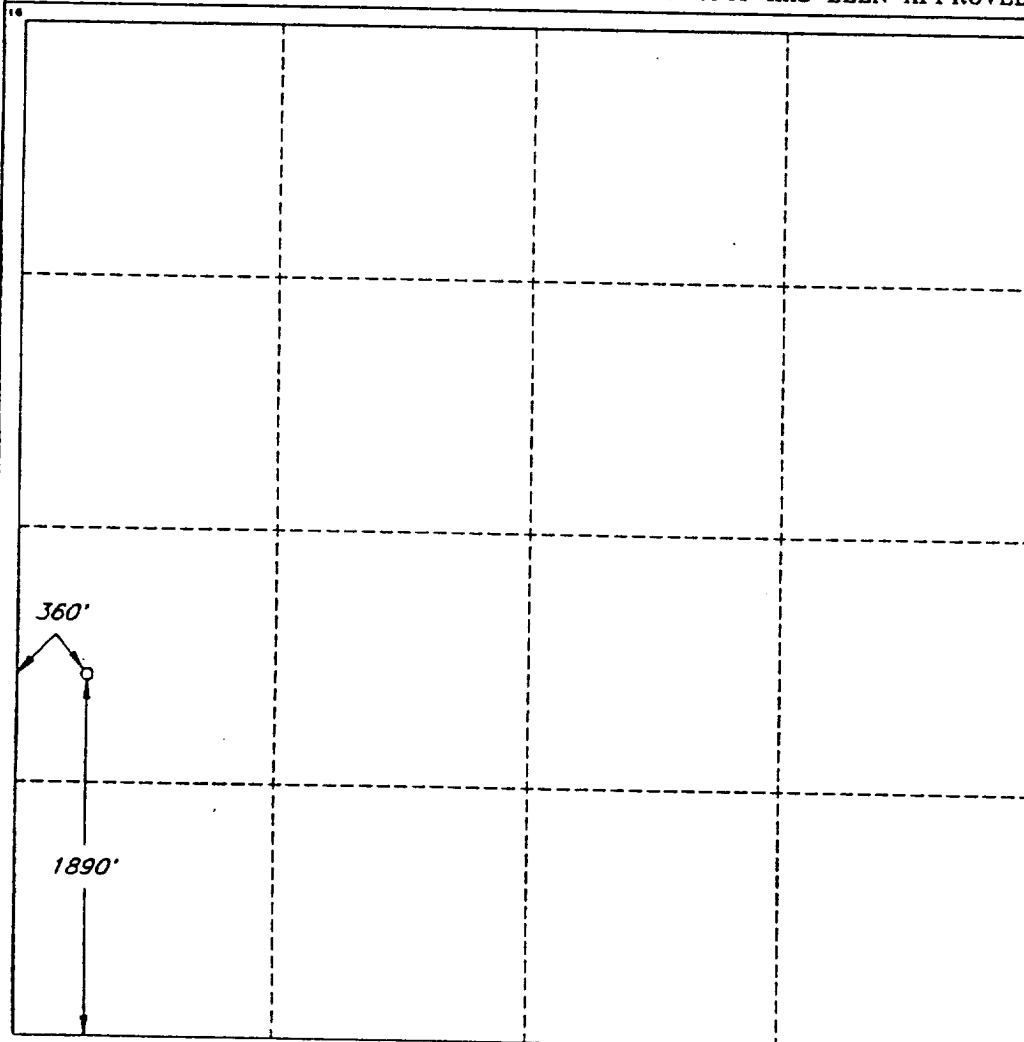
DISTRICT IV  
P. O. Box 2088  
Santa Fe, NM 87507-2088

☐ AMENDED REPORT

WELL LOCATION AND ACREAGE DEDICATION PLAT

1 API Number		2 Pool Code 58900		3 Pool Name TEAGUE SIMPSON					
4 Property Code 009278		5 Property Name BAYLUS CADE FEDERAL						6 Well Number 7	
7 OGRID No. 017805		8 Operator Name PLAINS PETROLEUM OPERATING COMPANY						9 Elevation 3253'	
10 SURFACE LOCATION									
UL or lot no. L	Section 35	Township 23 SOUTH	Range 37 EAST, N.M.P.M.	Lot Ida	Feet from the 1890'	North/South line SOUTH	Feet from the 380'	East/West line WEST	County LEA
11 BOTTOM HOLE LOCATION IF DIFFERENT FROM SURFACE									
UL or lot no. L	Section 35	Township 23S	Range 37E	Lot Ida	Feet from the 2300	North/South line South	Feet from the 400	East/West line West	County LEA
12 Dedicated Acres		13 Joint or Infill		14 Consolidation Code		15 Order No.			

NO ALLOWABLE WELL BE ASSIGNED TO THIS COMPLETION UNTIL ALL INTERESTS HAVE BEEN  
CONSOLIDATED OR A NON-STANDARD UNIT HAS BEEN APPROVED BY THE DIVISION



OPERATOR CERTIFICATION

I hereby certify that the information  
contained herein is true and complete  
to the best of my knowledge and belief.

Signature

*James R. Sutherland*

Printed Name

James R. Sutherland

Title

District Manager

Date

Sept. 24, 1996

SURVEYOR CERTIFICATION

I hereby certify that the well  
location shown on this plat was  
plotted from field notes of actual  
surveys made by me or under  
my supervision, and that the  
same is true and correct to the  
best of my belief.

Date of Survey

SEPTEMBER 19, 1996

Signature of Professional  
Surveyor

*V. Lynn Bezner*  
V. LYNN  
BEZNER  
NO. 7920  
V. L. BEZNER LAND SURV. #7920  
JOB #47588 SW / V.H.B.