

District I
PO Box 1980, Hobbs, NM 88241-1980
District II
PO Drawer DD, Artesia, NM 88211-0719
District III
1000 Rio Brazos Rd., Azusa, NM 87410
District IV
PO Box 2088, Santa Fe, NM 87504-2088

State of New Mexico
Energy, Minerals & Natural Resources Department

OIL CONSERVATION DIVISION
PO Box 2088
Santa Fe, NM 87504-2088

Form C-101
Revised February 10, 1994
Instructions on back
Submit to Appropriate District Office
State Lease - 6 Copies
Fee Lease - 5 Copies

☐ AMENDED REPORT

APPLICATION FOR PERMIT TO DRILL, RE-ENTER, DEEPEN, PLUGBACK, OR ADD A ZONE

Operator Name and Address. Cobra Oil & Gas Corporation P.O. Box 8206 Wichita Falls, Texas 76307-8206		OGRID Number 147404
		API Number 30-025-33717
Property Code 20035	Property Name State 19	Well No. 1

7 Surface Location

UL or lot no.	Section	Township	Range	Lot Ida	Feet from the	North/South line	Feet from the	East/West line	County
G	19	24S	33E		1865	North	2165	East	Lea

8 Proposed Bottom Hole Location If Different From Surface

UL or lot no.	Section	Township	Range	Lot Ida	Feet from the	North/South line	Feet from the	East/West line	County
Proposed Pool 1 S Sands Dunes Lower Perm. <i>Wildcat</i> <i>Morrow</i>					Proposed Pool 2				

Work Type Code N	Well Type Code G	Cable/Rotary R	Lease Type Code S	Ground Level Elevation 3541
Multiple N	Proposed Depth 16,000	Formation Morrow	Contractor	Spud Date 12/31/96

21 Proposed Casing and Cement Program

Hole Size	Casing Size	Casing weight/foot	Setting Depth	Sacks of Cement	Estimated TOC
26"	20"		60'	6 yards grout	Surface
17½"	13 3/8"	48#, 54, 5#	±650'	± 750 sx	Surface
12¼"	9 5/8"	36#, 40#	±5000'	± 2000 sx	Surface
8 3/4"	7"	23#, 26#	±12,300'	± 750 sx	5,000
6¼"	4½"	13.5#	±16,000'	± 700 sx	±12,000

12 Describe the proposed program. If this application is to DEEPEN or PLUG BACK give the data on the present productive zone and proposed new productive zone. Describe the blowout prevention program, if any. Use additional sheets if necessary.

Set 20" conductor to ±60. Cement with 6 yards grout.
Drill 17½" hole to ±650. Run 13 3/8" 48# & 54.5# H-40, casing. Cement with 1750 sack Premium Plus.
Drill 12¼" hole to ±5000'. Run 9 5/8" 36# & 40# J-55 casing. Cement with ±2000 sacks premium Plus.
Drill 8 3/4" hole to ±12,300'. Run 7" 23# & 26# S-95 & N-80 casing. Cement with ±750 sacks Premium.
Drill 6¼" hole to ±16,000'. Run 4½" 13.5# S-95 liner. Cement with ±700 sacks Premium.

I hereby certify that the information given above is true and complete to the best of my knowledge and belief. Signature: <i>Rory Edwards</i>		OIL CONSERVATION DIVISION	
Printed name: Rory Edwards		Approved by: <i>[Signature]</i>	
Title: Production Supervisor		Title: <i>[Signature]</i>	
Date: 12/4/96	Phone: (817) 716-5100	Approval Date: DEC 11 1996	Expiration Date:
		Conditions of Approval: Attached <input type="checkbox"/>	

DISTRICT I
P.O. Box 1980, Hobbs, NM 88241-1980

State of New Mexico
Energy, Minerals and Natural Resources Department

Form C-102
Revised February 10, 1994
Submit to Appropriate District Office
State Lease - 4 Copies
Fee Lease - 3 Copies

DISTRICT II
P.O. Drawer DD, Artesia, NM 88211-0719

DISTRICT III
1000 Rio Brazos Rd., Aztec, NM 87410

DISTRICT IV
P.O. BOX 2088, SANTA FE, N.M. 87504-2088

OIL CONSERVATION DIVISION

P.O. Box 2088
Santa Fe, New Mexico 87504-2088

☐ AMENDED REPORT

WELL LOCATION AND ACREAGE DEDICATION PLAT

API Number 30-025-33717	Pool Code ✓	Pool Name Wildcat Morrow
Property Code 20035	Property Name STATE 19	Well Number 1
OGRID No. 147404	Operator Name COBRA OIL AND GAS CORPORATION	Elevation 3541

Surface Location

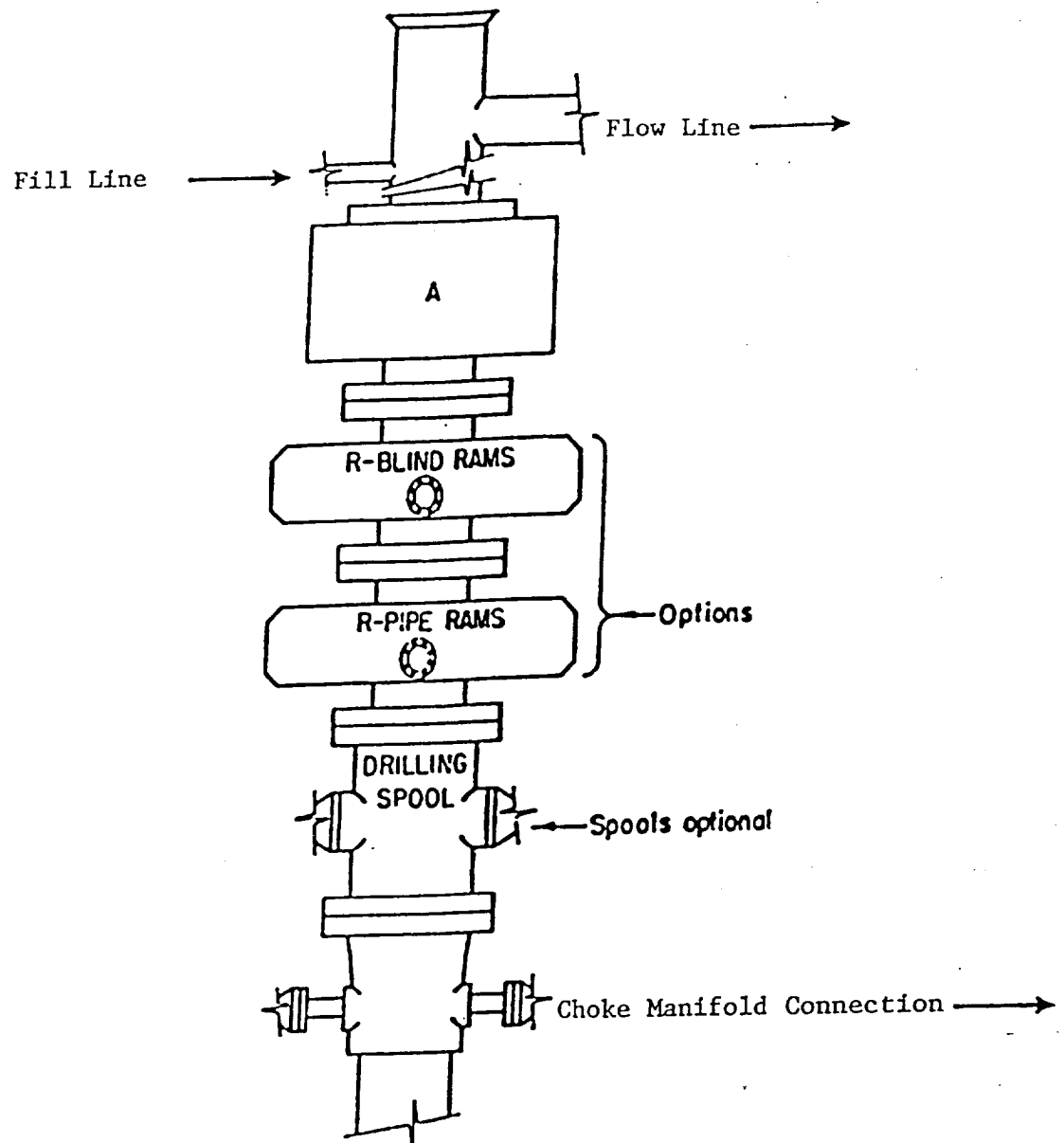
UL or lot No.	Section	Township	Range	Lot Idn	Feet from the	North/South line	Feet from the	East/West line	County
G	19	24 S	33 E		1865	NORTH	2165	EAST	LEA

Bottom Hole Location If Different From Surface

UL or lot No.	Section	Township	Range	Lot Idn	Feet from the	North/South line	Feet from the	East/West line	County
Dedicated Acres 320	Joint or Infill	Consolidation Code	Order No.						

NO ALLOWABLE WILL BE ASSIGNED TO THIS COMPLETION UNTIL ALL INTERESTS HAVE BEEN CONSOLIDATED
OR A NON-STANDARD UNIT HAS BEEN APPROVED BY THE DIVISION

LOT 1 38.72 ACRES LOT 2 38.82 ACRES	LOT 3 38.90 ACRES LOT 4 39.00 ACRES		OPERATOR CERTIFICATION <i>I hereby certify the the information contained herein is true and complete to the best of my knowledge and belief.</i> Signature Printed Name Rory Edwards Title Production Supervisor Date 12/4/96
			SURVEYOR CERTIFICATION <i>I hereby certify that the well location shown on this plat was plotted from field notes of actual surveys made by me or under my supervision, and that the same is true and correct to the best of my belief.</i> NOV. 26, 1996 Date Surveyed Signature & Seal of Professional Surveyor Certificate No. JOHN W. WEST 676 RONALD E. EIDSON 3239 PROFESSIONAL SURVEYOR 12641



ARRANGEMENT SRRA

10,000 PSI WP