

DISTRICT I
P.O. Box 1990, Hobbs, NM 88241-1990

State of New Mexico
Energy, Minerals and Natural Resources Department

Form C-102
Revised February 10, 1994
Submit to Appropriate District Office
State Lease - 4 Copies
Fee Lease - 3 Copies

DISTRICT II
P.O. Drawer DD, Artesia, NM 88211-0719

DISTRICT III
1000 Rio Brazos Rd., Aztec, NM 87410

DISTRICT IV
P.O. BOX 2088, SANTA FE, N.M. 87504-2088

OIL CONSERVATION DIVISION
P.O. Box 2088
Santa Fe, New Mexico 87504-2088

☐ AMENDED REPORT

WELL LOCATION AND ACREAGE DEDICATION PLAT

API Number 30-025-	Pool Code 58300	Pool Name TEAGUE PADDOCK-BLINEBRY
Property Code 014898	Property Name C.E. LAMUNYON	Well Number 63
OCRD No. 000962	Operator Name ARCH PETROLEUM INC.	Elevation 3290

Surface Location

UL or lot No. F	Section 27	Township 23 S	Range 37 E	Lot Idn	Feet from the 1400	North/South line NORTH	Feet from the 1340	East/West line WEST	County LEA
---------------------------	----------------------	-------------------------	----------------------	---------	------------------------------	----------------------------------	------------------------------	-------------------------------	----------------------

Bottom Hole Location If Different From Surface

UL or lot No.	Section	Township	Range	Lot Idn	Feet from the	North/South line	Feet from the	East/West line	County	
Dedicated Acres 20	Joint or Infill Infill	Consolidation Code		Order No.						

NO ALLOWABLE WILL BE ASSIGNED TO THIS COMPLETION UNTIL ALL INTERESTS HAVE BEEN CONSOLIDATED
OR A NON-STANDARD UNIT HAS BEEN APPROVED BY THE DIVISION

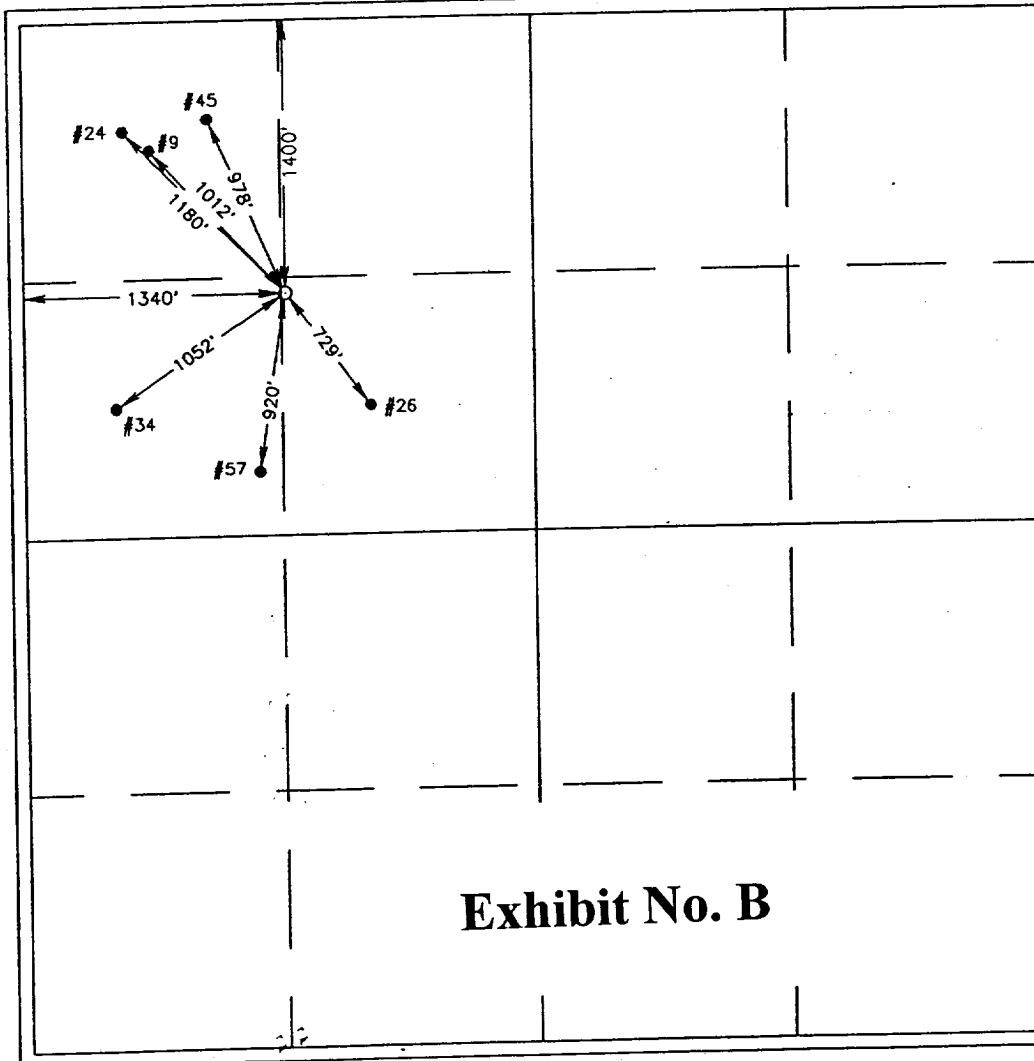


Exhibit No. B

OPERATOR CERTIFICATION

I hereby certify the the information
contained herein is true and complete to the
best of my knowledge and belief.

Bobbie Brooks
Signature

BOBBIE BROOKS
Printed Name

PRODUCTION ANALYST
Title

3-21-97
Date

SURVEYOR CERTIFICATION

I hereby certify that the well location shown
on this plat was plotted from field notes of
actual surveys made by me or under my
supervision, and that the same is true and
correct to the best of my belief.

MARCH 13, 1997

Date Surveyed
Signature of Surveyor
Professional Surveyor

Ronald J. Eidson
Signature of Surveyor
Professional Surveyor
3239
97-11-04
20-97

Certificate No. **JOHN W. WEST** 676
RONALD J. EIDSON 3239
GARY EIDSON 12641

