

OPER. OGRID NO. 36324PROPERTY NO. 20864

PLICATES

1989 on

FORM APPROVED  
OMB NO. 1004-0136  
Expires: February 28, 1995UNIT  
DEPARTMENT  
BUREAU OF  
APPLICATION FOR FPOOL CODE 7280EFF. DATE 5/21/97API NO. 30-025-33973

## 1a. TYPE OF WORK

DRILL ☒DEEPEN ☐

## b. TYPE OF WELL

OIL  
WELL ☒GAS  
WELL ☐

OTHER

SINGLE  
ZONE ☒MULTIPLE  
ZONE ☐

## 2. NAME OF OPERATOR

PARKER & PARSLEY Devel. LP (MICHAEL LYON)

## 3. ADDRESS AND TELEPHONE NO.

P.O. BOX 3178 MIDLAND, TEXAS 79702-3178 Ph. 915-683-4268

## 4. LOCATION OF WELL (Report location clearly and in accordance with any State requirements)

1980' FSL & 1980' FWL SEC. 19 T26S-R34E LEA CO. NM  
At proposed prod. zone Same

## 14. DISTANCE IN MILES AND DIRECTION FROM NEAREST TOWN OR POST OFFICE\*

Approximately 21 miles West Southwest of Jal New Mexico

15. DISTANCE FROM PROPOSED\*  
LOCATION TO NEAREST  
PROPERTY OR LEASE LINE, FT.  
(Also to nearest drlg. unit line, if any)

1980'

## 16. NO. OF ACRES IN LEASE

640

17. NO. OF ACRES ASSIGNED  
TO THIS WELL

40

18. DISTANCE FROM PROPOSED LOCATION\*  
TO NEAREST WELL, DRILLING, COMPLETED,  
OR APPLIED FOR, ON THIS LEASE, FT.

NA

## 19. PROPOSED DEPTH

12,500'

## 20. ROTARY OR CABLE TOOLS

ROTARY

## 21. ELEVATIONS (Show whether DF, RT, GR, etc.)

3389' GR.

## 22. APPROX. DATE WORK WILL START\*

As soon as approved

## 23.

## PROPOSED CASING AND CEMENTING PROGRAM

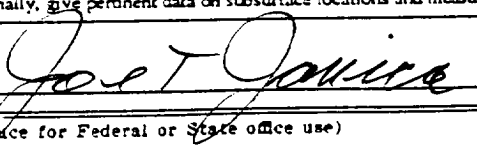
SIZE OF HOLE	GRADE SIZE OF CASING	WEIGHT PER FOOT	SETTING DEPTH	QUANTITY OF CEMENT
25"	Conductor 20"	NA	40'	Cement to surface with Radi-mix.
14 3/4"	H-40 11 3/4"	42	860'	450 Sx. Class "C" cement to surface.
11"	HBK 8 5/8"	32	5270' <u>10.5</u>	400 Sx. circulate to surface.
7 7/8"	N-80, S-95 5 1/2"	<u>227</u> 17	12,500' <u>11.7</u>	1550 Sx.

1. Drill 25" hole to 40'. Set 40' of 20" conductor pipe & cement to surface with Radi-mix.
2. Drill 14 3/4" hole to 860'. Run and set 860' of 11 3/4" H-40 42# ST&C casing. Cement with 450 Sx. Class "C" cement + additives, circulate cement to surface.
3. Drill 11" hole to 5270'. Run and set 5270' of 8 5/8" HBK 32# ST&C casing. Cement with 200 Sx. 35/65 POZ Class "C", tail in with 200 Sx. Class "C" cement + additives, circulate cement to surface.
4. Drill 7 7/8" hole to 12,500'. Run and set 12,500' of 5 1/2" N-80 & S-95 17# LT&C casing. Cement with 1250 Sx. SUPER MOD. "H" tail in with 300 Sx. Class "H" + additives.

IN ABOVE SPACE DESCRIBE PROPOSED PROGRAM: If proposal is to deepen, give data on present productive zone and proposed new productive zone. If proposal is to drill or deepen directionally, give pertinent data on subsurface locations and measured and true vertical depths. Give blowout preventer program, if any.

## 24.

SIGNED



TITLE

AGENT

DATE

04/20/97

(This space for Federal or State office use)

PERMIT NO.

APPROVAL DATE

Application approval does not warrant or certify that the applicant holds legal or equitable title to those rights in the subject lease which would entitle the applicant to conduct operations thereon.  
CONDITIONS OF APPROVAL, IF ANY:

(ORIG. SGD.) TONY L. FERGUSON

ADM. MINERALS

APPROVED BY

TITLE

DATE

5/15/97

\*See Instructions On Reverse Side

I hereby agree to make and willfully to make to any department or agency of the

DISTRICT I  
P.O. Box 1980, Hobbs, NM 88241-1980

State of New Mexico

Energy, Minerals and Natural Resources Department

Form C-102  
Revised February 10, 1994  
Submit to Appropriate District Office  
State Lease - 4 Copies  
Fee Lease - 3 Copies

DISTRICT II  
P.O. Drawer DD, Artesia, NM 88211-0719

DISTRICT III  
1000 Rio Brazos Rd., Aztec, NM 87410

DISTRICT IV  
P.O. BOX 2088, SANTA FE, N.M. 87504-2088

OIL CONSERVATION DIVISION

P.O. Box 2088  
Santa Fe, New Mexico 87504-2088

☐ AMENDED REPORT

WELL LOCATION AND ACREAGE DEDICATION PLAT

API Number <b>30-025-33973</b>	Pool Code 7280	Pool Name BRADLEY-BONE SPRING
Property Code <b>20864</b>	Property Name PATTON FEDERAL <b>19</b>	Well Number 1
OGRID No. 36324	Operator Name PARKER & PARSLEY <b>Devel LP</b>	Elevation 3389'

Surface Location

UL or lot No. K	Section 19	Township 26 S	Range 34 E	Lot Idn	Feet from the 1980	North/South line SOUTH	Feet from the 1980	East/West line WEST	County LEA
--------------------	---------------	------------------	---------------	---------	-----------------------	---------------------------	-----------------------	------------------------	---------------

Bottom Hole Location If Different From Surface

UL or lot No.	Section	Township	Range	Lot Idn	Feet from the	North/South line	Feet from the	East/West line	County
Dedicated Acres <b>40</b>	Joint or Infill	Consolidation Code	Order No.						

NO ALLOWABLE WILL BE ASSIGNED TO THIS COMPLETION UNTIL ALL INTERESTS HAVE BEEN CONSOLIDATED  
OR A NON-STANDARD UNIT HAS BEEN APPROVED BY THE DIVISION

	<b>OPERATOR CERTIFICATION</b>  I hereby certify the the information contained hereth is true and complete to the best of my knowledge and belief.   Signature Joe T. Janica Printed Name Agent Title 04/20/97 Date
	<b>SURVEYOR CERTIFICATION</b>  I hereby certify that the well location shown on this plat was plotted from field notes of actual surveys made by me or under my supervision and that the same is true and correct to the best of my belief.  FEBRUARY 21, 1997 Date Surveyed CDG Signature & Seal of Professional Surveyor  Certificate No. JOHN W. WEST 676 RONALD J. EIDSON 3239 GARY EIDSON 12641

# APPLICATION TO DRILL

PARKER & PARSLEY DEVELOPMENT L.P.  
 PATTON "19" FEDERAL #1  
 UNIT "K" SECTION 19  
 T26S R34E LEA CO. N.M.

In response to questions asked under Section II B of Bulletin NTL-6 the following information is provided for your consideration:

1. Location: 1980' FSL & 1980' FWL SEC. 19 T26S-R34E LEA CO. NM
2. Elevation above sea level: 3389' GR.
3. Geologic name of surface formation: Quaternary Aeolian Deposits.
4. Drilling tools and associated equipment: Conventional rotary drilling rig using fluid as a circulating medium for solids removal.
5. Proposed drilling depth: 12,500'

6. Estimated tops of geological markers:

Rustler Anhydrite	770'	Basal Brushy Canyon	9400'
Top of Salt	1120'	Bone Spring	9900'
Cherry Canyon	6300'	2nd Bone Spring	10400'
Brushy Canyon	7800'	3rd Bone Spring	12200'

7. Possible mineral bearing formation:

Cherry Canyon	Oil
Brushy Canyon	Oil
Bone Spring	Oil

8. Casing program:

Hole size	Interval	OD casing	Weight	Thread	Collar	Grade	Condition
25"	0-40	20"	Conductor	AN	NA	NA	New
14 3/4"	0-860'	11 3/4"	42#	8-R	ST&C	H-40	New
11"	0-5270'	8 5/8"	32#	8-R	ST&C	HBK	New
7 7/8"	0-12,500'	5 1/2"	17#	8-R &Buttress LT&C		N-80 S-95	New

# APPLICATION TO DRILL

PARKER & PARSLEY PET. INC.  
 PATTON "19" FEDERAL #1  
 UNIT "K" SECTION 19  
 T26S-R34E LEA CO. NM

## 9. Cementing and Setting Depth:

20"	Conductor	Set 40' of 20" conductor pipe and cement to surface with Redi-mix.
11 3/4"	Surface	Set 860' of 11 3/4" H-40 42# ST&C casing. Cement with 450 Sx. Class "C" + additives, circulate cement to surface.
8 5/8"	Intermediate	Set 5270' of 8 5/8" HBK 32# ST&C casing. Cement with 200 Sx. 35/65 POZ Class "C", tail in with 200 Sx. Class "C" + additives, circulate cement to surface.
5 1/2"	Production	Set 12,500' of 5 1/2" S-95 & N-80 17# LT&C & Buttress casing. Cement with 1250 Sx. Super Modified Class "H", tail in with 300 Sx. Class "H" + additives.

10. Pressure Control Equipment: Exhibit "E". A 1560 Series 5000 PSI working pressure B.O.P. consisting of a double ram type preventor with a bag type annular preventor. BOP unit will be hydraulically operated. Exhibit "E-1". Choke manifold and closing unit. BOP will be nipped up on 11 3/4" casing and will be operated at least once each 24 Hr. period while drilling and blind rams will be operated when out of hole during trips. Flow sensor, PVT, full opening stabbing valve and upper kelly cock will be utilized. No abnormal pressure or temperature is expected while drilling.

## 11. Proposed Mud Circulating System:

Depth	Mud Wt.	Visc.	Fluid Loss	Type Mud
40-860'	8.4-8.8	28-34	NC	Fresh water Spud mud add paper for seepage control & hole sweeps.
860-5270'	10-10.5	29-36	NC	Brine water use Lime for pH control and paper for seepage.
5270-12,200'	10-10.5	29-38	NC	"
12200-12500'	10-10.7	34-38	10 CC or less	Brine water with Drispac use soda ash to control hardness and starch to control water loss.

Sufficient mud materials will be kept on location at all times in order to combat lost circulation, unexpected kicks. In order to run DST'S, open hole logs, and casing the viscosity and water loss may have to be adjusted to meet these needs.

APPLICATION TO DRILL

PARKER & PARSLEY DEVELOPMENT L. P.  
PATTON "19" FEDERAL #1  
UNIT "K" SECTION 19  
T26S R34E LEA CO. N.M.

12. Testing, Logging and Coring Program:

- A. Open hole logs: Dual Laterolog, MSFL, cnl, ldt, RSW/LSS from TD to intermediate casing shoe. Gamma Ray & Caliper from TD to surface.
- B. DST's and cores as deemed necessary

13. Potential Hazards:

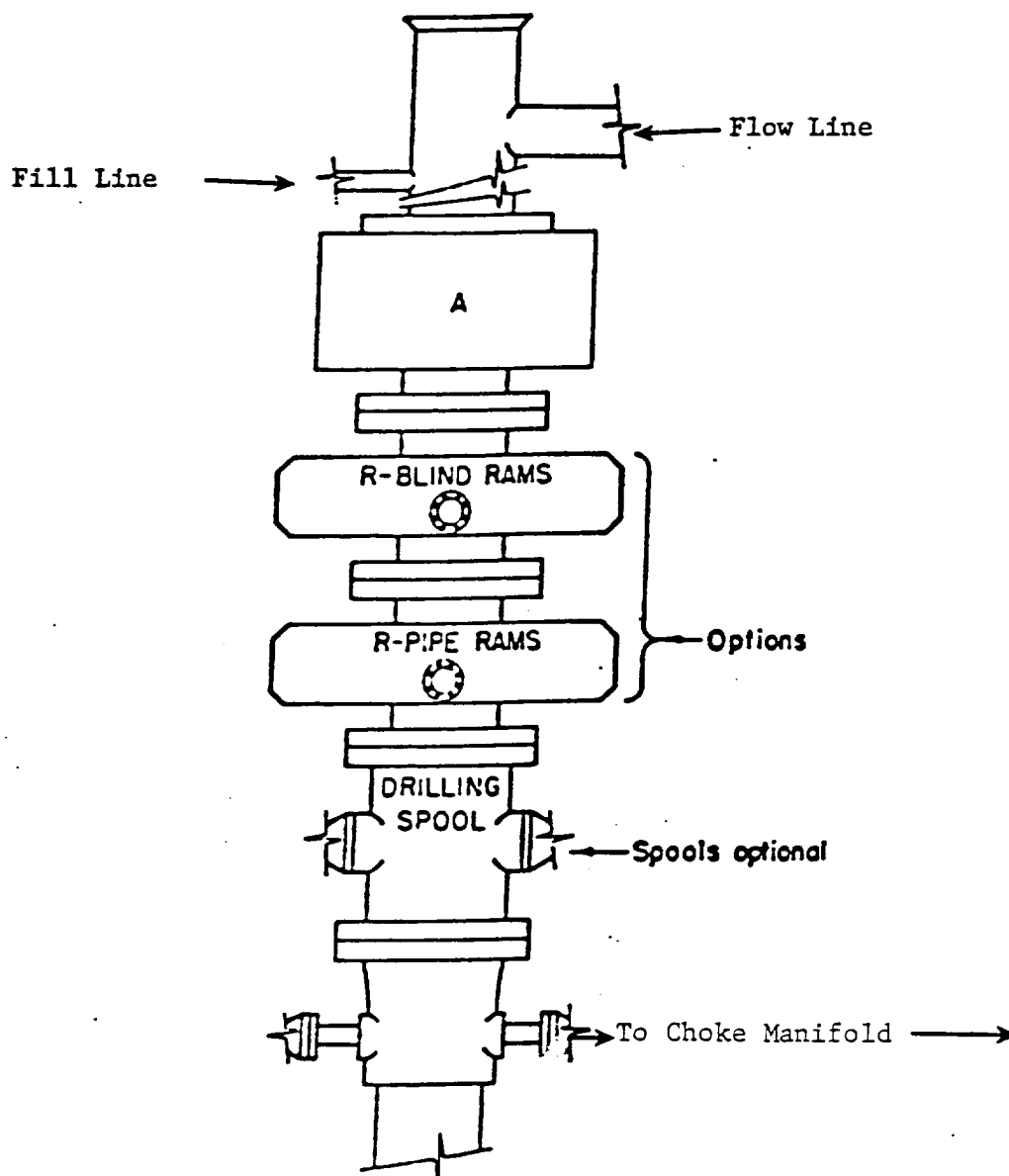
No abnormal pressures or temperatures are expected. Hydrogen Sulfide gas may be encountered, H<sub>2</sub>S detectors will be in place to detect any presence. No lost circulation is expected to occur. All personnel will be familiar with all aspects of safe operation of equipment being used. Estimated BHP 6500 PSI, estimated BHT 180° .

14. Anticipated Starting Date and Duration of Operation:

Road and location construction will begin after BLM approval of APD. Anticipated spud date as soon as approved. Drilling expected to take 60-75 days. If production casing is run an additional 30 days will be required to complete and construct surface facilities.

15. Other Facets of Operations:

After running casing, cased hole gamma ray neutron collar logs will be run from total depth over possible pay intervals. The Bone Spring pay will be perforated and stimulated. The well will be swab tested and potentialized as an oil well.



### ARRANGEMENT SRRA

1500 Series  
5000# Working Pressure

EXHIBIT "E"  
B.O.P. SKETCH TO BE USED ON  
PARKER & PARSLEY PET. INC.  
PATTON "19" FEDERAL #1  
UNIT "K" SECTION 19  
T26S-R34E LEA CO. NM

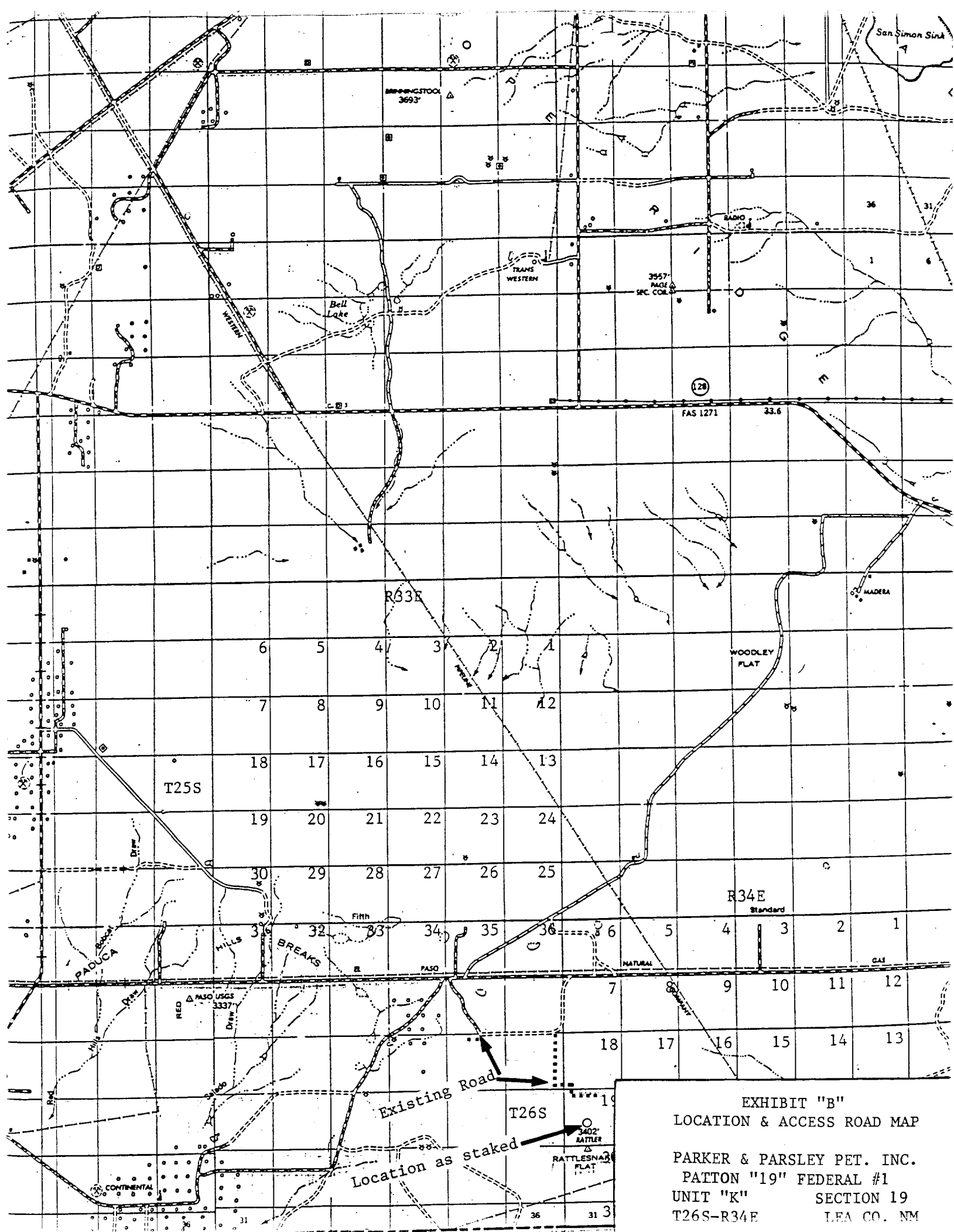


EXHIBIT "B"  
 LOCATION & ACCESS ROAD MAP  
 PARKER & PARSLEY PET. INC.  
 PATTON "19" FEDERAL #1  
 UNIT "K" SECTION 19  
 T26S-R34E LEA CO. NM