

District I  
PO Box 1980, Hobbs, NM 88241-1980  
District II  
PO Drawer DD, Artesia, NM 88211-0719  
District III  
1000 Rio Brazos Rd., Aztec, NM 87410  
District IV  
PO Box 2088, Santa Fe, NM 87504-2088

State of New Mexico  
Energy, Minerals & Natural Resources Department

OIL CONSERVATION DIVISION  
PO Box 2088  
Santa Fe, NM 87504-2088

Form C-101  
Revised February 10, 1994  
Instructions on back  
Submit to Appropriate District Office  
State Lease - 6 Copies  
Fee Lease - 5 Copies

☐ AMENDED REPORT

APPLICATION FOR PERMIT TO DRILL, RE-ENTER, DEEPEN, PLUGBACK, OR ADD A ZONE

APACHE CORPORATION 2000 POST OAK BLVD. SUITE 100 HOUSTON, TEXAS 77056-4400		<sup>1</sup> Operator Name and Address.	<sup>1</sup> OGRID Number 00873
			<sup>1</sup> API Number 30 - 0 265348
<sup>4</sup> Property Code 16843	<sup>5</sup> Property Name SKELLY PENROSE "A" UNIT		<sup>6</sup> Well No. 95

<sup>7</sup> Surface Location

UL or lot no.	Section	Township	Range	Lot Ida	Feet from the	North/South line	Feet from the	East/West line	County
F	10	23S	37E		1560'	North	1358'	West	LEA

<sup>8</sup> Proposed Bottom Hole Location If Different From Surface

UL or lot no.	Section	Township	Range	Lot Ida	Feet from the	North/South line	Feet from the	East/West line	County

<sup>9</sup> Proposed Pool 1 LANGLIE MATTIX: 7 Rvrs, Queen, Grayburg	<sup>10</sup> Proposed Pool 2
---	-------------------------------

<sup>11</sup> Work Type Code N	<sup>12</sup> Well Type Code O	<sup>13</sup> Cable/Rotary ROTARY	<sup>14</sup> Lease Type Code P	<sup>15</sup> Ground Level Elevation 3294'
<sup>16</sup> Multiple NO	<sup>17</sup> Proposed Depth 3750'	<sup>18</sup> Formation PENROSE	<sup>19</sup> Contractor UNKNOWN	<sup>20</sup> Spud Date AS SOON AS APPROVED

<sup>21</sup> Proposed Casing and Cement Program

Hole Size	Casing Size	Casing weight/foot	Setting Depth	Sacks of Cement	Estimated TOC
12 1/2"	9 5/8"	32.3	1160'	455Sx.	Surface
8 3/4"	5 1/2"	17	3750'	1950 Sx.	Surface

<sup>22</sup> Describe the proposed program. If this application is to DEEPEN or PLUG BACK give the data on the present productive zone and proposed new productive zone. Describe the blowout prevention program, if any. Use additional sheets if necessary.

1. Drill 12 1/2" hole to 1160'. Run and set 1160' of 9 5/8" 32.3# H-40 ST&C casing. Cement with 455 Sx. Class "C" + 1/2# flocele/Sx. +2% CaCl, circulate cement to surface.
2. Drill 8 3/4" hole to 3750'. Run and set 3750' of 5 1/2" 17# J-55 ST&C casing. Cement in two stages if water flowis encountered. 1st stage cement with 250 Sx. Class "C" + 2% CaCl. 2nd stage cement with 1500 Sx. Class "C" + additives tail in with 200 Sx. Class "C" + 2% CaCl, hold 300 PSI back pressure . circulate cement to surface.

Approved for drilling only, to be produced only after a non-standard location approved.

Permit Expires 1 Year From Approval  
Date Unless Drilling Underway

<sup>23</sup> I hereby certify that the information given above is true and complete to the best of my knowledge and belief.

Signature: *Joe T. Janica*  
Printed name: Joe T. Janica  
Title: Agent

Date: 05/23/97

Phone:

OIL CONSERVATION DIVISION

Approved by: *John H. Hester*

Title: *Oil Engineer*

Approval Date: MAY 23 1997

Expiration Date:

Conditions of Approval:

## DISTRICT I

P.O. Box 1950, Hobbs, NM 88241-1950

## DISTRICT II

P.O. Drawer DD, Artesia, NM 88211-0719

## DISTRICT III

1000 Rio Brazos Rd., Aztec, NM 87410

## DISTRICT IV

P.O. Box 2088, Santa Fe, NM 87504-2088

## State of New Mexico

Energy, Minerals and Natural Resources Department

Form C-102

Revised February 10, 1994  
Submit to Appropriate District Office

State Lease - 4 Copies

Fee Lease - 3 Copies

## OIL CONSERVATION DIVISION

P.O. Box 2088

Santa Fe, New Mexico 87504-2088

☐ AMENDED REPORT

## WELL LOCATION AND ACREAGE DEDICATION PLAT

API Number	Pool Code	Pool Name
	37240	LANGLIE MATTIX: 7 RVRS, QUEEN, GRAYBURG
Property Code	Property Name	Well Number
16843	SPAU	95
OGRID No.	Operator Name	Elevation
00873	APACHE CORPORATION	3294

## Surface Location

UL or lot No.	Section	Township	Range	Lot Idn	Feet from the	North/South line	Feet from the	East/West line	County
F	10	23 S	37 E		1560	NORTH	1358	WEST	LEA

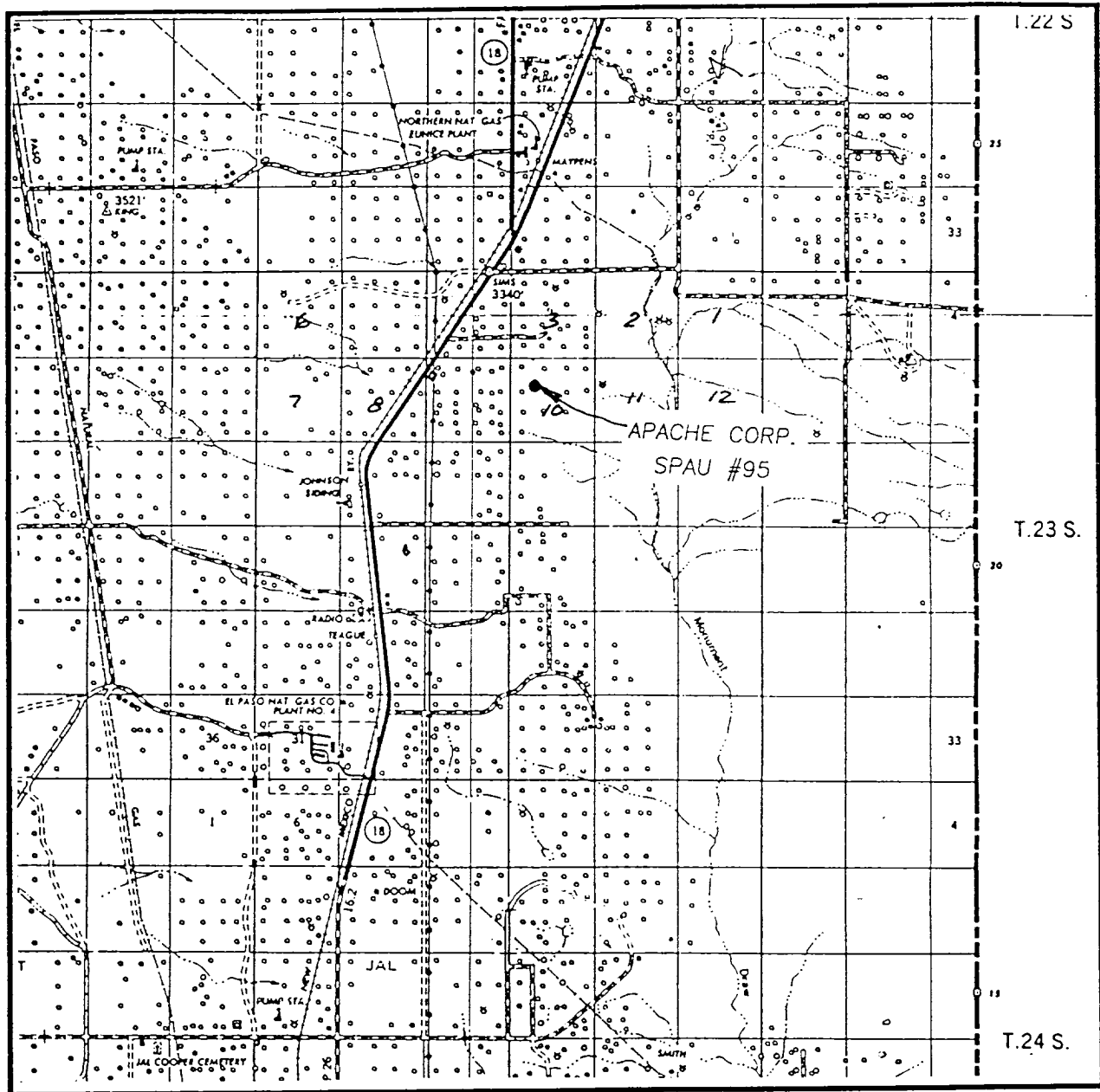
## Bottom Hole Location If Different From Surface

UL or lot No.	Section	Township	Range	Lot Idn	Feet from the	North/South line	Feet from the	East/West line	County
Dedicated Acres	Joint or Infill	Consolidation Code	Order No.						
40									

NO ALLOWABLE WILL BE ASSIGNED TO THIS COMPLETION UNTIL ALL INTERESTS HAVE BEEN CONSOLIDATED  
OR A NON-STANDARD UNIT HAS BEEN APPROVED BY THE DIVISION

	<b>OPERATOR CERTIFICATION</b>  I hereby certify the the information contained herein is true and complete to the best of my knowledge and belief.  <i>Joe T. Janica</i> Signature Joe T. Janica Printed Name Agent Title 05/23/97 Date
	<b>SURVEYOR CERTIFICATION</b>  I hereby certify that the well location shown on this plat was plotted from field notes of actual surveys made by me or under my supervision and that the same is true and correct to the best of my belief.  MAY 13, 1997 Date Surveyed Signature & Seal Professional Surveyor JLP 5-15-97 P.O. Num. 87-116697
	Certificate No. 676 WEST, 676 EIDSON, 3239 G. EIDSON, 12641

# VICINITY MAP



SCALE: 1" = 2 MILES

SEC. 10 TWP. 23-S RGE. 37-E

SURVEY N.M.P.M.

COUNTY LEA

DESCRIPTION 1560' FNL & 1358' FWL

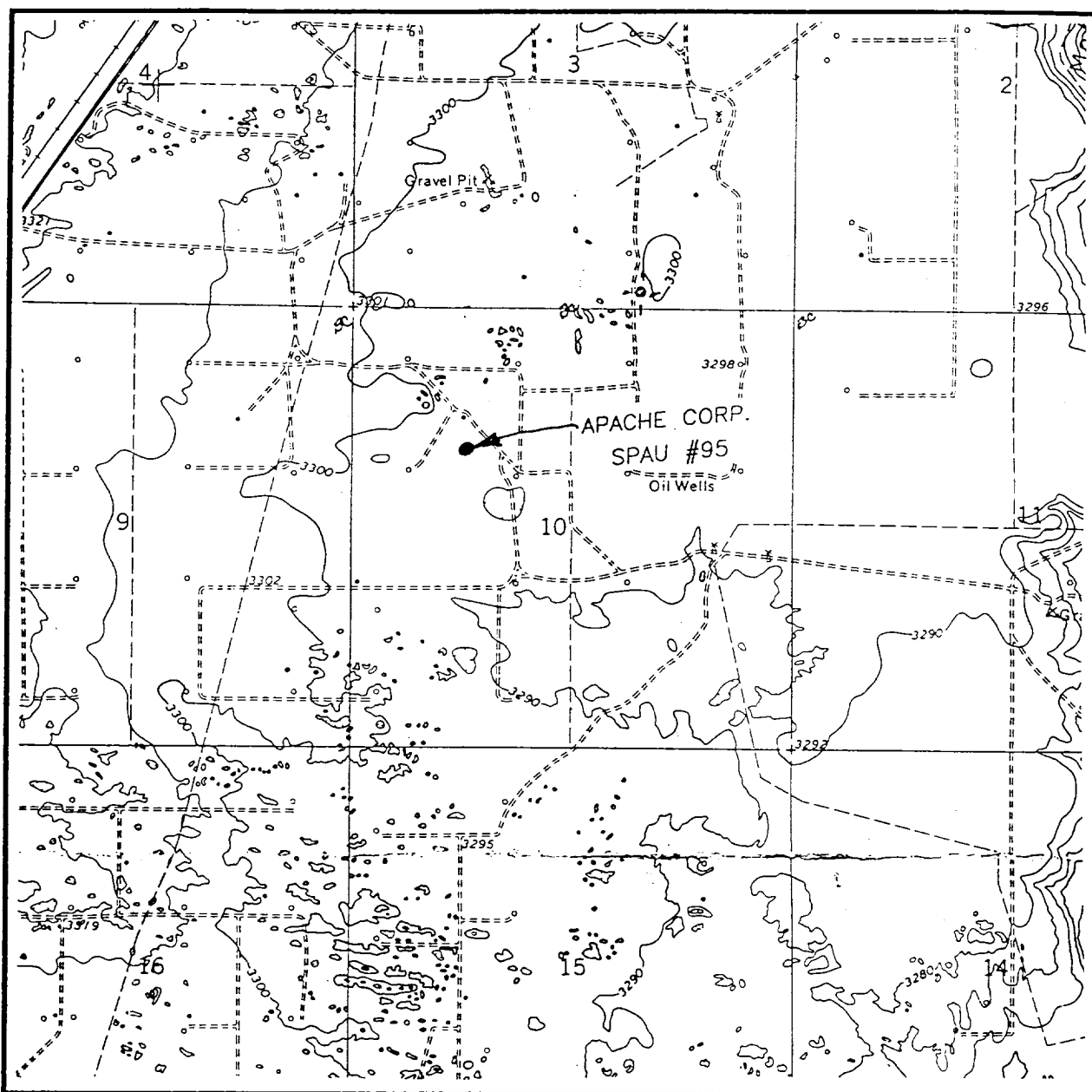
ELEVATION 3294'

OPERATOR APACHE CORP.

LEASE SPAU

**JOHN WEST ENGINEERING**  
**HOBBS, NEW MEXICO**  
**(505) 393-3117**

# LOCATION VERIFICATION MAP



SCALE: 1" = 2000'

CONTOUR INTERVAL - 10'

SEC. 10 TWP. 23-S RGE. 37-E

SURVEY N.M.P.M.

COUNTY LEA

DESCRIPTION 1560' FNL & 1358' FWL

ELEVATION 3294'

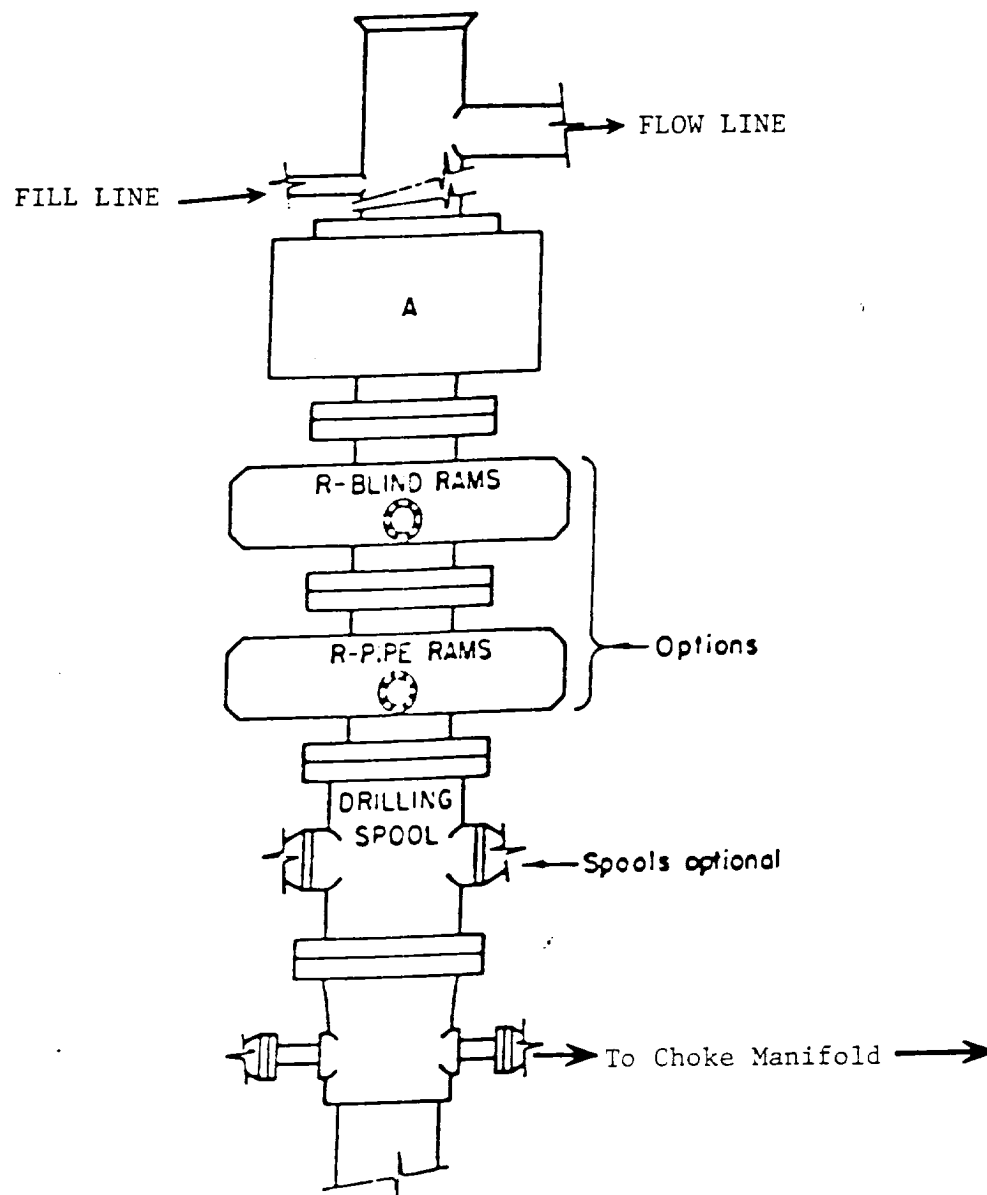
OPERATOR APACHE CORP.

LEASE SPAU

U.S.G.S. TOPOGRAPHIC MAP  
RATTLESNAKE CANYON, N.M.

**JOHN WEST ENGINEERING  
HOBBS, NEW MEXICO**

**(505) 393-3117**



# **ARRANGEMENT SRRA**

900 Series  
3000 PSI WP