

## DISTRICT I

P.O. Box 1980, Hobbs, NM 88241-1980

## DISTRICT II

P.O. Box Drawer DD, Artesia, NM 88211-0719

## DISTRICT III

1000 Rio Brazos Rd., Aztec, NM 87410

## DISTRICT IV

P.O. Box 2088, Santa Fe, NM 87504-2088

State of New Mexico  
Energy, Minerals and Natural Resources Department

## OIL CONSERVATION DIVISION

P.O. Box 2088  
Santa Fe, New Mexico 87504-2088

Form C-101

Revised February 10, 1994

Instructions on back

Submit to Appropriate District Office

State Lease - 6 Copies

Fee Lease - 5 Copies

☐ AMENDED REPORT

## APPLICATION FOR PERMIT TO DRILL, RE-ENTER, DEEPEN, PLUGBACK, OR ADD A ZONE

<sup>1</sup> Operator Name and Address TEXACO EXPLORATION & PRODUCTION INC. P.O. Box 3109, Midland Texas 79702		<sup>2</sup> OGRID Number 022351
		<sup>3</sup> API Number 30-025-34105
<sup>4</sup> Property Code 13195	<sup>5</sup> Property Name F. B. DAVIS	<sup>6</sup> Well No. 6

<sup>7</sup> Surface Location

UI or lot no.	Section	Township	Range	Lot.Idn	Feet From The	North/South Line	Feet From The	East/West Line	County
B	8	23-S	37-E		510'	NORTH	1350'	EAST	LEA

<sup>8</sup> Proposed Bottom Hole Location If Different From Surface

UI or lot no.	Section	Township	Range	Lot.Idn	Feet From The	North/South Line	Feet From The	East/West Line	County
<sup>9</sup> Proposed Pool 1 TEAGUE SOUTHWEST, PADDOCK					<sup>10</sup> Proposed Pool 2				

<sup>11</sup> Work Type Code N	<sup>12</sup> Well Type Code O	<sup>13</sup> Rotary or C.T. ROTARY	<sup>14</sup> Lease Type Code P	<sup>15</sup> Ground Level Elevation 3325'
<sup>16</sup> Multiple No	<sup>17</sup> Proposed Depth 5400'	<sup>18</sup> Formation PADDOCK	<sup>19</sup> Contractor NABORS	<sup>20</sup> Spud Date 8/22/97

<sup>21</sup> Proposed Casing and Cement Program

SIZE OF HOLE	SIZE OF CASING	WEIGHT PER FOOT	SETTING DEPTH	SACKS OF CEMENT	EST. TOP
11"	8 5/8"	24#	1150'	550 SACKS	SURFACE
7 7/8"	5 1/2"	15.5#	5400'	1700 SACKS	SURFACE

Permit Expires 1 Year from Approval  
Date Unless Drilling Underway

<sup>22</sup> Describe the proposed program. If this application is to DEEPEN or PLUG BACK give the data on the present productive zone and proposed new productive zone. Describe the blowout prevention program, if any. Use additional sheets if necessary.

## CEMENTING PROGRAM:

SURFACE CASING - 350 SACKS CLASS C W/ 4% GEL, 2% CACL2 (13.5 PPG, 1.74 CF/S, 9.11 GW/S). F/B 200 SACKS CLASS C W/ 2% CACL2 (14.8 PPG, 1.34 CF/S, 6.3 GW/S).

PRODUCTION CASING - 1st STG: 400 SACKS 50/50 POZ CLASS H W/ 2% GEL, 5% SALT, 1/4# FLOCELE (14.2 PPG, 1.35 CF/S, 6.3 GW/S)  
DV TOOL @ 4000': 2nd STG: 1200 SACKS 35/65 POZ CLASS H W/ 6% GEL, 5% SALT, 1/4# FLOCELE (12.4 PPG, 2.14 CF/S, 11.9 GW/S). F/B 100 SACKS CLASS H (15.6 PPG, 1.18 CF/S, 5.2 GW/S).

UNORTHODOX LOCATION: EXCEPTION HAS BEEN APPLIED FOR. (COPY ATTACHED).  
TEXACO REQUESTS PERMISSION TO SPUD WELL PRIOR TO UNORTHODOX APPROVAL.

Approval for drilling only -- CANNOT produce until Non-Standard Location is approved.

<sup>23</sup> I hereby certify that the rules and regulations of the Oil Conservation Division have been complied with and that the information given above is true and complete to the best of my knowledge and belief.		OIL CONSERVATION DIVISION	
Signature <i>C. Wade Howard</i>			
Printed Name C. Wade Howard		Approved By: ORIGINAL SIGNED BY CHRIS WILLIAMS, DISTRICT I SUPERVISOR	
Title Eng. Assistant		Title:	
Date 8/13/97		Approval Date: AUG 18 1997	
Telephone 688-4606		Expiration Date:	
		Conditions of Approval: Attached <input type="checkbox"/>	

DISTRICT I  
P. O. Box 1980, Hobbs, NM 88240

DISTRICT II  
P. O. Drawer DD, Artesia, NM 88210

DISTRICT III  
1000 Rio Brazos Rd., Aztec, NM 87410

DISTRICT IV  
P. O. Box 2088, Santa Fe, NM 87504-2088

State of New Mexico  
Energy, Minerals and Natural Resources Department

OIL CONSERVATION DIVISION  
PO Box 2088  
Santa Fe, NM 87504-2088

Form C-102  
Revised February 10, 1994

Instructions on back

Submit to Appropriate District Office

State Lease-4 copies  
Fee Lease-3 copies

WELL LOCATION AND ACREAGE DEDICATION PLAT

☐ AMENDED REPORT

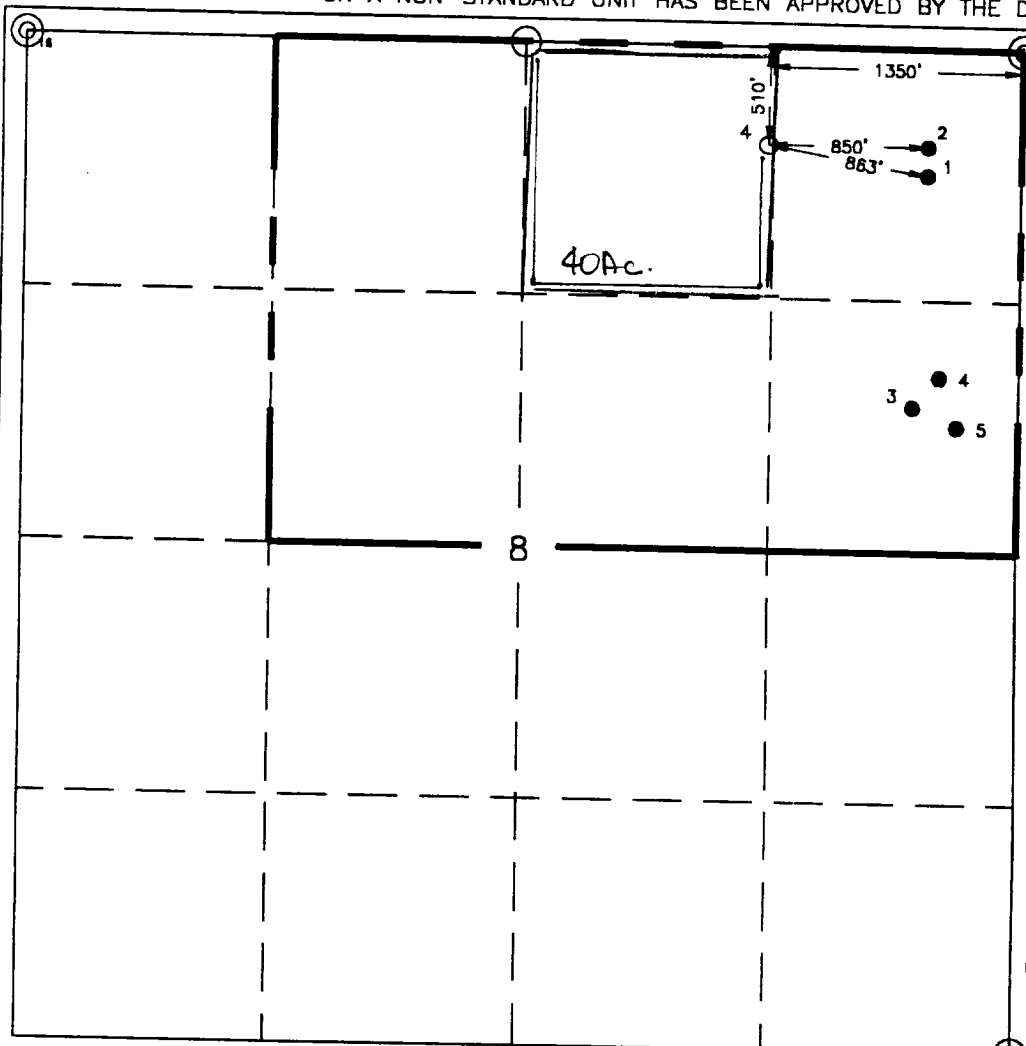
<sup>1</sup> API Number 3D-025-34105		<sup>2</sup> Pool Code 58595		<sup>3</sup> Well Name Teague Southwest, Paddock 6 Glorieta Upper	
<sup>4</sup> Property Code 13195		<sup>5</sup> Property Name F. B. Davis			
<sup>6</sup> GRID No. 22351		<sup>7</sup> Operator Name TEXACO EXPLORATION & PRODUCTION, INC.			
				<sup>8</sup> Well Number 6	
				<sup>9</sup> Elevation 3325'	

<sup>10</sup> Surface Location									
UL or lot no. B	Section 8	Township 23-S	Range 37-E	Lot Idn	Feet from the 510'	North/South line North	Feet from the 1350'	East/West line East	County Lea

<sup>11</sup> Bottom Hole Location If Different From Surface									
UL or lot no.	Section	Township	Range	Lot Idn	Feet from the	North/South line	Feet from the	East/West line	County

<sup>12</sup> Dedicated Acres 40	<sup>13</sup> Joint or Infill	<sup>14</sup> Consolidation Code	<sup>15</sup> Order No.
-------------------------------------	-------------------------------	----------------------------------	-------------------------

NO ALLOWABLE WILL BE ASSIGNED TO THIS COMPLETION UNTIL ALL INTERESTS HAVE BEEN CONSOLIDATED  
OR A NON-STANDARD UNIT HAS BEEN APPROVED BY THE DIVISION.



<sup>16</sup> OPERATOR CERTIFICATION	
I hereby certify that the information contained herein is true and complete to the best of my knowledge and belief.	
Signature	<i>C. Wade Howard</i>
Printed Name	C. Wade Howard
Position	Engineer's Assistant
Company	Texaco Expl. & Prod. Inc.
Date	August 13, 1997
<sup>17</sup> SURVEYOR CERTIFICATION	
I hereby certify that the well location shown on this plat was plotted from field notes of actual surveys made by me or under my supervision, and that the same is true and correct to the best of my knowledge and belief.	
Date Surveyed	August 12, 1997
Signature & Seal of Professional Surveyor	<i>John S. Piper</i>
Certificate No.	7254 John S. Piper
Sheet	



Texaco Exploration  
and Production Inc

500 North Lamar  
Midland TX 79701

P.O. Box 111  
Midland TX 79701

August 13, 1997

**GOV - STATE AND LOCAL GOVERNMENTS**

Unorthodox Location

F. B. Davis Well No. 6

Teague Southwest, Paddock Field

Lea County, New Mexico

State of New Mexico

Energy and Minerals Department

Oil Conservation Division

2040 South Pacheco

Santa Fe, New Mexico 87505

Attention: Mr. Michael E. Stogner

Gentlemen:

An Exception to Rule 104 F. (2) by administrative approval, is requested for the captioned well. This well is located 510' FNL & 1335' FEL, Unit Letter "B", of Section 8, T-23-S, R-37-E.

This well must be drilled in this location due to geological considerations. As seen on the attached map, this well will exploit the structure at the best geologic position and capture additional reserves. The proposed location will encounter laterally discontinuous reservoirs that can not be depleted from existing wellbores. If secondary recovery operations are needed in the future, the proposed location will allow the implementation of standard operations.

There are no "affected offset operators" to this location. Attached is Form C-102 for this well.

Yours very truly,

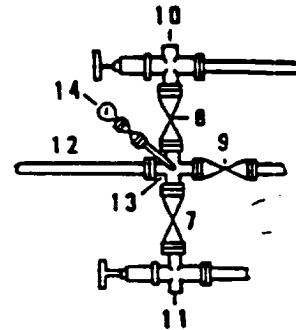
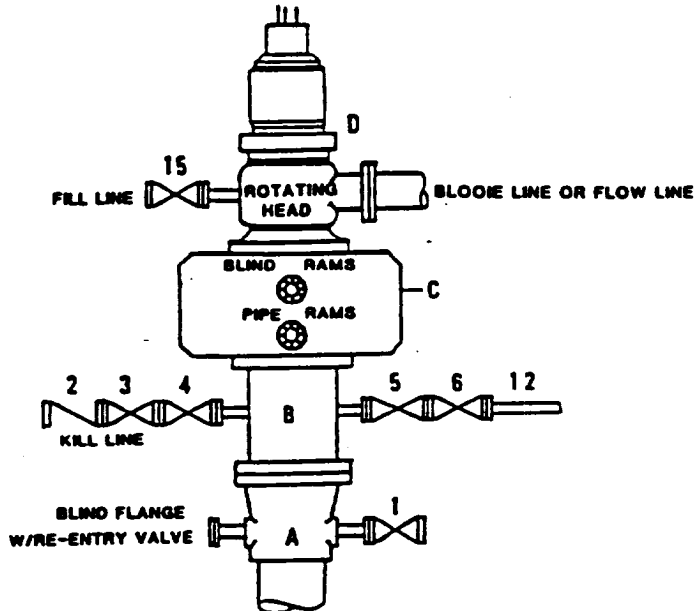
C. W. Howard  
Engineer Assistant

CWH: Attachments cc: OCD Hobbs



**DRILLING CONTROL  
CONDITION II-B 3000 WP  
FOR AIR DRILLING OR  
WHERE NITROGEN OR AIR BLOWS ARE EXPECTED**

H<sub>2</sub>S TRIM REQUIRED  
YES \_\_\_\_\_ NO X



DRILLING CONTROL

MATERIAL LIST - CONDITION II - B

- |                |   |
|----------------|---|
| A              | Texaco Wellhead   |
| B              | 3000# W.P. drilling spool with a 2" minimum flanged outlet for kill line and 3" minimum flanged outlet for choke line.  |
| C              | 3000# W.P. Dual ram type preventer, hydraulic operated with 1" steel, 3000# W.P. control lines (where sub-structure height is adequate, 2 - 3000# W.P. single ram type preventers may be utilized). |
| D              | Rotating Head with fill up outlet and extended Bloode Line.   |
| 1,3,4,<br>7,8, | 2" minimum 3000# W.P. flanged full opening steel gate valve, or Halliburton Lo Torc Plug valve.   |
| 2              | 2" minimum 3000# W.P. back pressure valve.  |
| 5,6,9          | 3" minimum 3000# W.P. flanged full opening steel gate valve, or Halliburton Lo Torc Plug valve.   |
| 12             | 1" minimum schedule 80, Grade "B", seamless line pipe.  |
| 13             | 2" minimum x 3" minimum 3000# W.P. flanged cross.   |
| 10,11          | 2" minimum 3000# W.P. adjustable choke bodies.  |
| 14             | Cameron Mud Gauge or equivalent ( location optional in choke line).   |
| 15             | 2" minimum 3000# W.P. flanged or threaded full opening steel gate valve, or Halliburton Lo Torc Plug valve.   |



TEXACO, INC.  
MIDLAND DIVISION  
MIDLAND, TEXAS



SCALE	DATE	EST NO	DRG. NO.
DRAWN BY			
CHECKED BY			
APPROVED BY			

EXHIBIT C

86/81/2

