

District I
PO Box 1980, Hobbs, NM 88241-1980
District II
811 South First, Artesia, NM 88210
District III
1000 Rio Brazos Rd., Aztec, NM 87410
District IV
2040 South Pacheco, Santa Fe, NM 87505

State of New Mexico
Energy, Minerals & Natural Resources Department

OIL CONSERVATION DIVISION
2040 South Pacheco
Santa Fe, NM 87505

Form C-101
Revised October 18, 1994
Instructions on back
Submit to Appropriate District Office
State Lease - 6 Copies
Fee Lease - 5 Copies

☐ AMENDED REPORT

APPLICATION FOR PERMIT TO DRILL, RE-ENTER, DEEPEN, PLUGBACK, OR ADD A ZONE

Operator Name and Address. Cobra Oil & Gas Corporation P.O. Box 8206 Wichita Falls, Texas 76307-8206		OGRID Number 147404
		API Number 30-025-34148
Property Code 21606	Property Name State 30	Well No. 1

Surface Location

UL or lot no.	Section	Township	Range	Lot Idn	Feet from the	North/South line	Feet from the	East/West line	County
B	30	24S	38E		660	North	1980	East	Lea

Proposed Bottom Hole Location If Different From Surface

UL or lot no.	Section	Township	Range	Lot Idn	Feet from the	North/South line	Feet from the	East/West line	County

Proposed Pool 1 Wildcat - Morrow	Proposed Pool 2
-------------------------------------	-----------------

Work Type Code N	Well Type Code G	Cable/Rotary R	Lease Type Code S	Ground Level Elevation 3546
Multiple N	Proposed Depth 16000	Formation Morrow	Contractor Patterson Drlg	Spud Date 10/7/97

Proposed Casing and Cement Program

Hole Size	Casing Size	Casing weight/foot	Setting Depth	Sacks of Cement	Estimated TOC
30"	24"		40'	6 yds grout	Surface
20"	16"	65#	650'	680 sacks	Surface
14 3/4"	10 3/4"	60.7#	5000'	3285 sacks	Surface
9 1/2"	7 5/8"	39#	12800'	875 sacks	5000'
6 1/2"	5"	18#	15500'	465 sacks	12300'

Describe the proposed program. If this application is to DEEPEN or PLUG BACK give the data on the present productive zone and proposed new productive zone. Describe the blowout prevention program, if any. Use additional sheets if necessary.

Set 40' of 24" conductor and cement with 6 yards of grout.
Drill 20" surface hole to $\pm 650'$ and set 16" 65# H-40 BTC casing and cement w/ ± 680 sacks. Circulate to surface.
Drill 14 3/4" intermediate hole to $\pm 5000'$ and set 10 3/4" 60.7# VAM casing and cement w/ ± 3285 sacks. Circulate cement to surface.
Drill 9 1/2" hole to $\pm 12,800'$ and set 7 5/8" 33.7# & 39# S-95 & P-110 casing and cement w/ ± 875 sacks.
Drill 6 1/2" hole to $\pm 15,500'$ & set 5" 18# P-110 liner from 15,500' - 12,500' & cement w/ ± 465 sacks.

I hereby certify that the information given above is true and complete to the best of my knowledge and belief.

Signature:

Printed name: Rory Edwards

Title: Production Supervisor

OIL CONSERVATION DIVISION

Approved by: ORIGINAL SIGNED BY CHRIS WILLIAMS
DISTRICT I SUPERVISOR

Title:

Approval Date:

Expiration Date:

DISTRICT I
P.O. Box 1980, Hobbs, NM 88241-1980

State of New Mexico
Energy, Minerals and Natural Resources Department

Form C-102
Revised February 10, 1994
Submit to Appropriate District Office
State Lease - 4 Copies
Fee Lease - 3 Copies

DISTRICT II
P.O. Drawer DD, Artesia, NM 88211-0719

DISTRICT III
1000 Rio Brazos Rd., Aztec, NM 87410

DISTRICT IV
P.O. BOX 2088, SANTA FE, N.M. 87504-2088

OIL CONSERVATION DIVISION

P.O. Box 2088
Santa Fe, New Mexico 87504-2088

☐ AMENDED REPORT

WELL LOCATION AND ACREAGE DEDICATION PLAT

API Number <u>30-025-34148</u>	Pool Code	Pool Name <u>Wildcat - Morrow</u>
Property Code <u>21606</u>	Property Name <u>STATE 30</u>	Well Number <u>1</u>
UGRID No. <u>147404</u>	Operator Name <u>COBRA OIL & GAS CORPORATION</u>	Elevation <u>3546</u>

Surface Location

UL or lot No. <u>B</u>	Section <u>30</u>	Township <u>24 S</u>	Range <u>33 E</u>	Lot Idn	Feet from the <u>660</u>	North/South line <u>NORTH</u>	Feet from the <u>1980</u>	East/West line <u>EAST</u>	County <u>LEA</u>
---------------------------	----------------------	-------------------------	----------------------	---------	-----------------------------	----------------------------------	------------------------------	-------------------------------	----------------------

Bottom Hole Location If Different From Surface

UL or lot No.	Section	Township	Range	Lot Idn	Feet from the	North/South line	Feet from the	East/West line	County
Dedicated Acres <u>40 3/20</u>	Joint or Infill <u>N/A</u>	Consolidation Code	Order No.						

NO ALLOWABLE WILL BE ASSIGNED TO THIS COMPLETION UNTIL ALL INTERESTS HAVE BEEN CONSOLIDATED
OR A NON-STANDARD UNIT HAS BEEN APPROVED BY THE DIVISION

OPERATOR CERTIFICATION

I hereby certify the the information
contained herein is true and complete to the
best of my knowledge and belief.

Rory Edwards
Signature

Rory Edwards
Printed Name

Production Supervisor
Title

9/22/97
Date

SURVEYOR CERTIFICATION

I hereby certify that the well location shown
on this plat was plotted from field notes of
actual surveys made by me or under my
supervision, and that the same is true and
correct to the best of my belief.

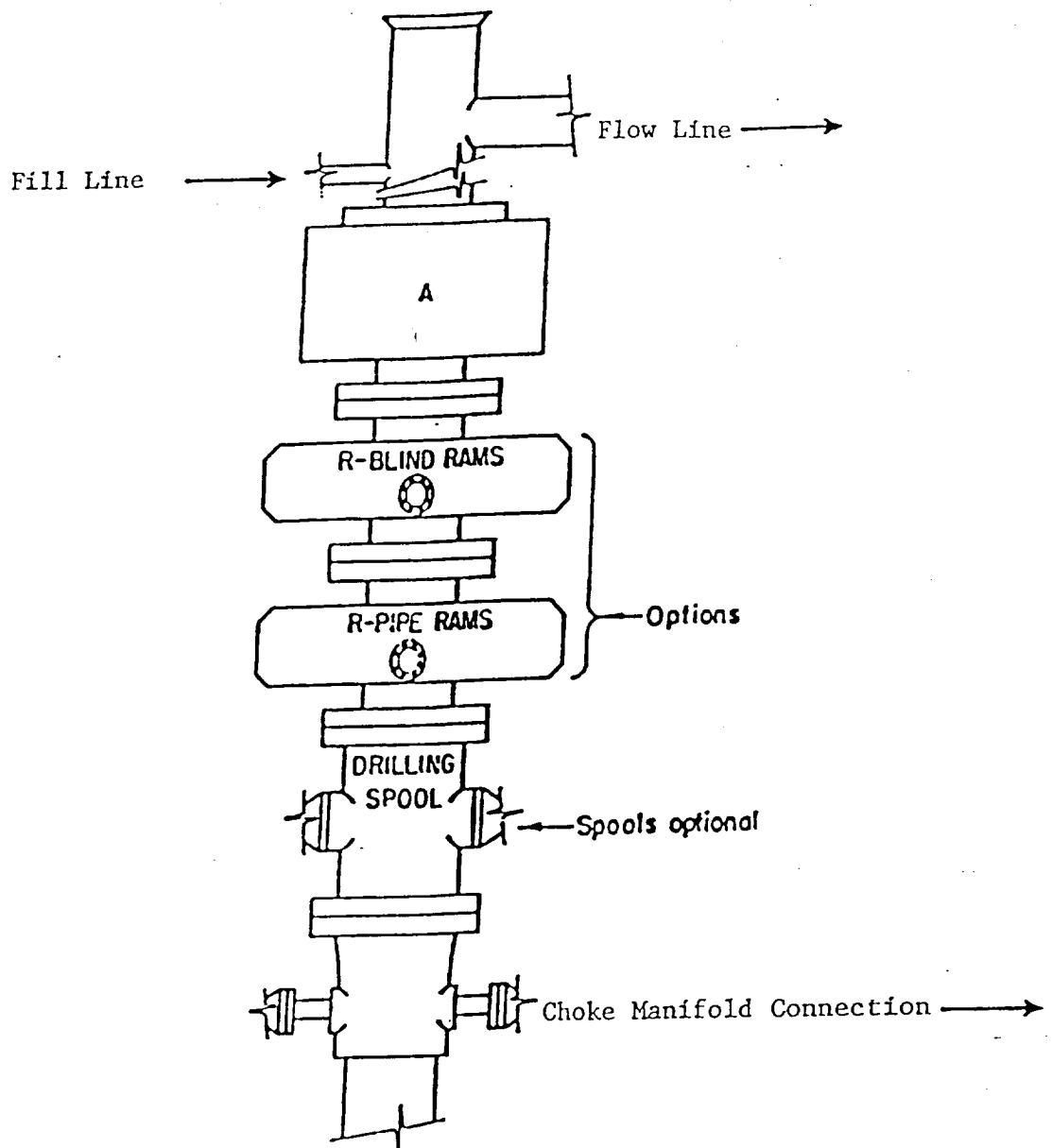
SEPTEMBER 15, 1997

Date Surveyed SEP 15 1997 DMCC

Signature Ronald J. Eidson
Professional Surveyor

Ronald J. Eidson
NEW MEXICO
3239
9-17-97
11-15-97

Certificate No. JOHN W. WEST 676
RONALD J. EIDSON 3239
RONALD J. EIDSON 12641



ARRANGEMENT SRRA

10,000 PSI WP