

District I
PO Box 1980, Hobbs, NM 88241-1980
District II
PO Drawer DD, Artesia, NM 88211-0719
District III
1000 Rio Brazos Rd., Aztec, NM 87410
District IV
PO Box 2088, Santa Fe, NM 87504-2088

State of New Mexico
Energy, Minerals & Natural Resources Department

OIL CONSERVATION DIVISION
PO Box 2088
Santa Fe, NM 87504-2088

Form C-101
Revised February 10, 1994
Instructions on back
Submit to Appropriate District Office
State Lease - 6 Copies
Fee Lease - 5 Copies

☐ AMENDED REPORT

APPLICATION FOR PERMIT TO DRILL, RE-ENTER, DEEPEN, PLUGBACK, OR ADD A ZONE

Operator Name and Address: Kaiser-Francis Oil Company P. O. Box 21468 Tulsa, OK 74121-1468		OGRID Number 012361
Property Code 22510	Property Name Bell Lake	API Number 30-025-34307
		Well No. 20

7 Surface Location

UL or lot no.	Section	Township	Range	Lot Idn	Feet from the	North/South line	Feet from the	East/West line	County
G	6	24S	34E	-	1650	North	1980	East	Lea

8 Proposed Bottom Hole Location If Different From Surface

UL or lot no.	Section	Township	Range	Lot Idn	Feet from the	North/South line	Feet from the	East/West line	County
Proposed Pool 1 Bell Lake Morrow South					Proposed Pool 2				

Work Type Code N	Well Type Code G	Cable/Rotary R	Lease Type Code AS	Ground Level Elevation 3606
Multiple No	Proposed Depth 13400	Formation Morrow	Contractor Undecided	Spud Date 3/15/98

21 Proposed Casing and Cement Program

Hole Size	Casing Size	Casing weight/foot	Setting Depth	Sacks of Cement	Estimated TOC
17 1/2	13 3/8	48	650	575	Surf
12 1/4	9 5/8	40	5200	1400	Surf
8 3/4	7	26	12100	1050	5000
6	4 1/2	15.1	13400	200	11900

Describe the proposed program. If this application is to DEEPEN or PLUG BACK give the data on the present productive zone and proposed new productive zone. Describe the blowout prevention program, if any. Use additional sheets if necessary.

See attached

Permit Expires 1 Year From Approval
Date Unless Drilling Underway

I hereby certify that the information given above is true and complete to the best of my knowledge and belief.

Signature: *Charlotte Van Valkenburg*
Printed name: Charlotte Van Valkenburg
Title: Technical Coordinator
Date: 2/11/98
Phone: 918-491-4314

OIL CONSERVATION DIVISION

Approved by: *CHRIS WILLIAMS*
Title: DISTRICT SUPERVISOR
Approval Date: _____ Expiration Date: _____
Conditions of Approval:
Attached ☐

District I
PC Box 1980, Hobbs, NM 88241-1980

District II
PO Drawer DD, Artesia, NM 88211-0719

District III
1000 Rio Brazos Rd., Aztec, NM 87410

District IV
PO Box 2088, Santa Fe, NM 87504-2088

State of New Mexico
Energy, Minerals & Natural Resources Department

OIL CONSERVATION DIVISION
PO Box 2088
Santa Fe, NM 87504-2088

Form C-102
Revised February 21, 1994
Instructions on back
Submit to Appropriate District Office
State Lease - 4 Copies
Fee Lease - 3 Copies

WELL LOCATION AND ACREAGE DEDICATION PLAT

API Number 30-025-34307	Pool Code 71960	Pool Name Bell Lake Morrow South
Property Code 22510	Property Name BELL LAKE	Well Number 20-6
OGRID No. 012361	Operator Name KAISER-FRANCIS OIL COMPANY	Elevation 3606

Surface Location

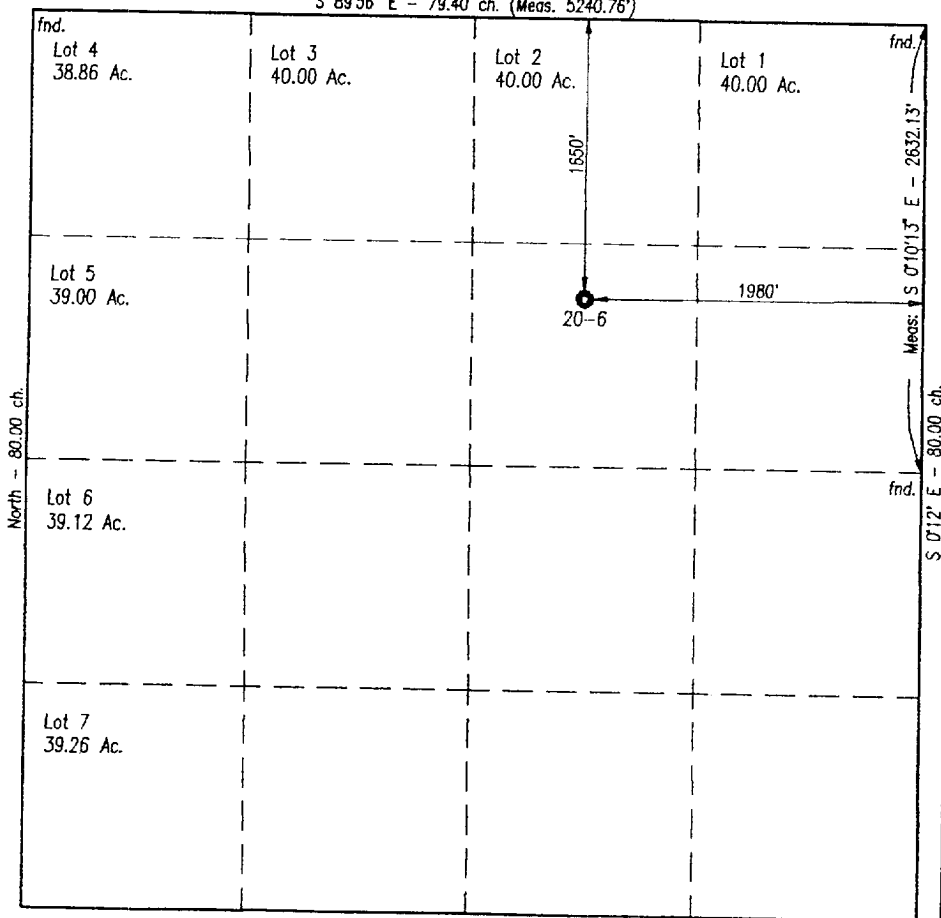
UL or lot no.	Section	Township	Range	Lot Idn	Feet from the	North/South line	Feet from the	East/West line	County
G	6	24 S	34 E		1650	NORTH	1980	EAST	LEA

Bottom Hole Location If Different From Surface

UL or lot no.	Section	Township	Range	Lot Idn	Feet from the	North/South line	Feet from the	East/West line	County
Dedicated Acres 640	Joint or Infill N	Consolidation Code -	Order No.						

NO ALLOWABLE WILL BE ASSIGNED TO THIS COMPLETION UNTIL ALL INTERESTS HAVE BEEN CONSOLIDATED
OR A NON-STANDARD UNIT HAS BEEN APPROVED BY THE DIVISION

(BASIS OF BEARINGS)
S 89°56' E - 79.40 ch. (Meas. 5240.76')



OPERATOR CERTIFICATION

I hereby certify that the information contained herein is true and correct to the best of my knowledge and belief

Ted Jacobson
Signature

Ted Jacobson
Printed Name

Mgr., Drilling & Prod.
Title

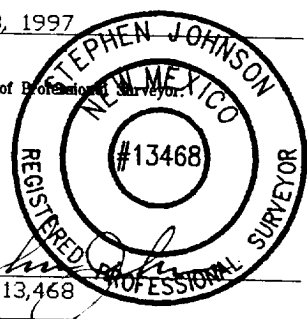
2/6/98
Date

SURVEYOR CERTIFICATION

I hereby certify that the well location shown on this plat was plotted from field notes of actual surveys made by me or under my supervision, and that the same is true and correct to the best of my belief.

December 13, 1997
Date of Survey

Stephen Johnson
Signature and Seal of Professional Surveyor



Certificate Number 13,468

ELF
4/24/62
ABOVE DATE DOES NOT
INDICATE WHEN
CONFIDENTIAL LOGS
WILL BE RELEASED

010
SD 100
Received
100